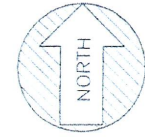


JUN 08 2011

Rapid City Growth Management Department



Propose to extend culvert + fill

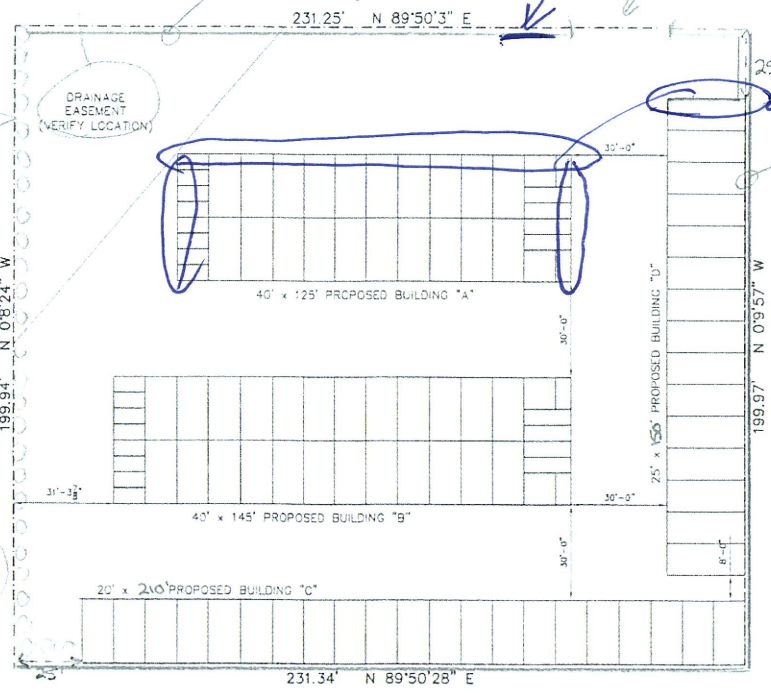
6' depressive force

sign

gate

accent stone 4' high

4' concrete retaining wall

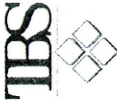


UNIT MIX

UNIT SIZE	# UNITS	%	SQ. FEET
5 x 10	20	17.2	1000
5 x 15	8	6.9	600
10 x 10	4	3.4	400
10 x 20	63	57.8	12600
10 x 25	15	14.7	3750
TOTAL	116	100	18750

sewer from Doyle Estes

TRACHTE BUILDING SYSTEMS, Inc.
This drawing and all parts hereof are the property of Trachte Building Systems, Inc. 214 Madison Road, Sun Prairie, Wisconsin 53591 and may not be reproduced in whole or part without written permission.



PROPOSED MINI-STORAGE SYSTEM FOR:
MICKS ELECTRIC INC.
MICK NAGEL
RAPID CITY, SD

SITE PLAN

NOTICE:

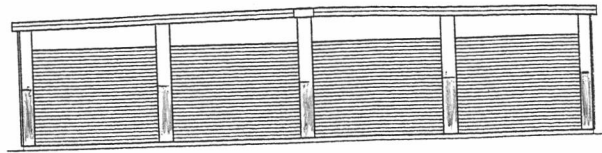
THE SPECIFIC PROJECT INFORMATION PROVIDED TO TRACHTE BUILDING SYSTEMS, INC. WAS USED IN THE DEVELOPMENT OF THE ENGINEERING DRAWINGS, DETAILS, MATERIALS LIST AND PRICING. ANY DISCREPANCIES BETWEEN THIS INFORMATION AND THE ACTUAL JOB CONDITIONS WILL AFFECT THE ACCURACY OF THIS WORK. TRACHTE IS NOT RESPONSIBLE FOR ANY ADDITIONAL MATERIALS OR ANY LAYOUT PROBLEMS CAUSED BY INACCURATE SITE INFORMATION. PLEASE RECHECK THIS INFORMATION CAREFULLY!

DATE: 2/9/11
SCALE: ALG
SCALE: 1" = 20'-0"
JOB NO: 41403

SITE

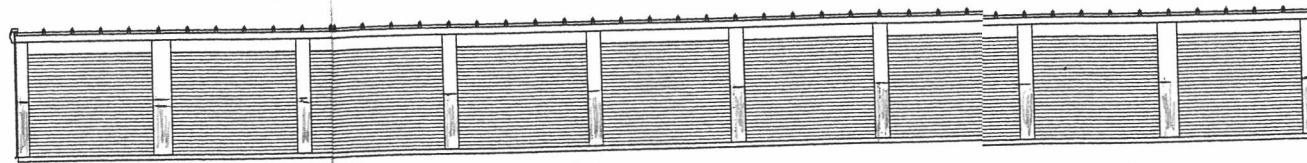
DOOR SCHEDULE							COLOR	PART #
QTY	CODE	TYPE	SIZE	ROUGH OPENING (REF.)	MANUF.	DESCRIPTION		
2	DB	ROLL-UP	3'-8" x 7'-0"	3'-8" x 7'-0"	TRAC-RITE/eq.	ROLL-UP DOOR	COLORED	94__
6	DC	ROLL-UP	4'-0" x 7'-0"	4'-0" x 7'-0"	TRAC-RITE/eq.	ROLL-UP DOOR	COLORED	94__
4	DEDD	ROLL-UP	8'-8" x 7'-0"	8'-8" x 7'-0"	TRAC-RITE/eq.	NON-OPERATIONAL DOOR	COLORED	94__
14	DF	ROLL-UP	9'-0" x 7'-0"	9'-0" x 7'-0"	TRAC-RITE/eq.	ROLL-UP DOOR	COLORED	94__
2	DG	ROLL-UP	8'-8" x 6'-6"	8'-8" x 6'-6"	TRAC-RITE/eq.	ROLL-UP DOOR	COLORED	94__
2	DH	ROLL-UP	9'-0" x 6'-6"	9'-0" x 6'-6"	TRAC-RITE/eq.	ROLL-UP DOOR	COLORED	94__

ROLL-UP DOORS MEET ASTM E330



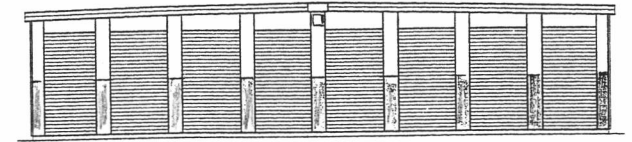
END WALL ELEVATION

East elevation bldg A



SIDE WALL ELEVATION

North elevation bldg A



END WALL ELEVATION

West elevation bldg A

RECEIVED

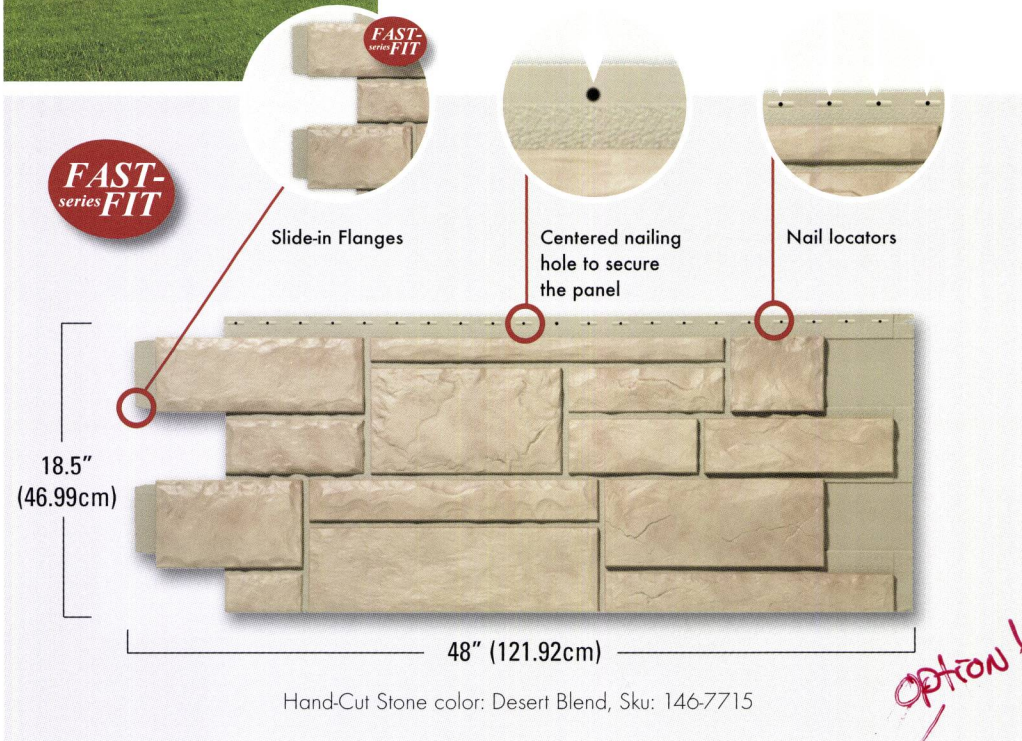
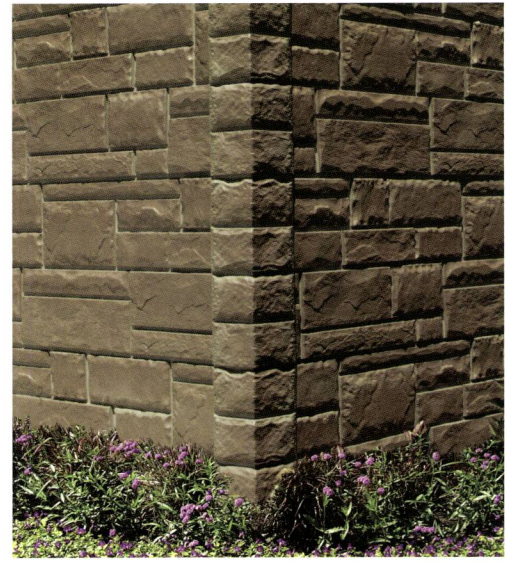
JUN 08 2011

Rapid City Growth
Management Department

Hand-Cut Stone Panels *Adding distinction and refinement to your home at a fraction of the cost*



- Injection molded for superior quality
- High quality copolymer resists warping, impact and discoloration
- Available in a wide range of blended colors
- Seamless visual appearance
- Quick and easy installation
- Limited lifetime warranty
- Low maintenance
- Mortar line color matches the khaki J-Channel



Coordinating Accessories

Corners in matching colors



Snap-in corner
 Packaged: 10 pcs. per carton.
 Sold separately.
 Sku: 1467702 - 1467726

Universal Starter Strip

Premium extruded rigid anodized aluminum will never rust.



Length: 4ft.
 Packaged: 100 lin.ft. (25 pcs.) per carton.
 Sold separately.
 Sku: 146-1049

J-Channel:

Use 3/4" Timbercrest J-Channel.
 Sold separately.

Packaging & specifications:

9 panels per carton,
 Approximately 5.55 square feet per panel

Colors Available

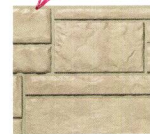
Special order:
 Approximately 1 week



Mountain Blend
 Sku: 146-7703



Canyon Blend
 Sku: 146-7709



Desert Blend
 Sku: 146-7715

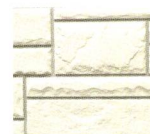
Colors Available

Special order:
 Approximately 2 weeks

OPTION 2



Bark Blend
 Sku: 146-7701



White Blend
 Sku: 146-7721



Weathered Blend
 Sku: 146-7707



Red Blend
 Sku: 146-7713



Gray Blend
 Sku: 146-7719



Cedar Blend
 Sku: 146-7725

RECEIVED

JUN 08 2011

Rapid City Growth Management Department



NOVIK
 INNOVATIVE POLYMERS

Toll-Free: 888.847.8057
 e-mail: info@novik.com

See our Web site for installation instructions
www.novik.com



TRIM AND DOOR COLORS



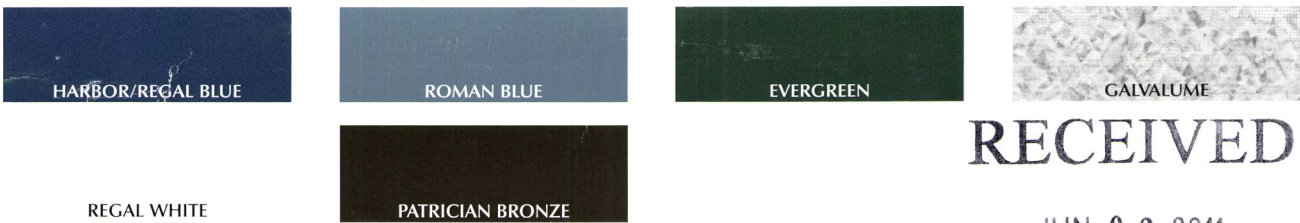
— Doors + trim

R-PANEL ROOF COLORS*



Included on Trachte buildings 1":12" pitch or more. Optional on all other building types.

STANDING SEAM ROOF COLORS*



RECEIVED

JUN 08 2011

Rapid City Growth Management Department

30 other colors are available. Contact Trachte for further information.

WALL COLORS



wall

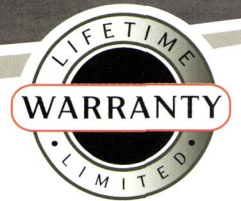
Note: Colors shown are printed samples on paper. Colors vary from actual panel material. For an accurate color sample, please contact Trachte Building Systems at 800-356-5824.

*Not available on the Trachte Portable Self-Storage Container.

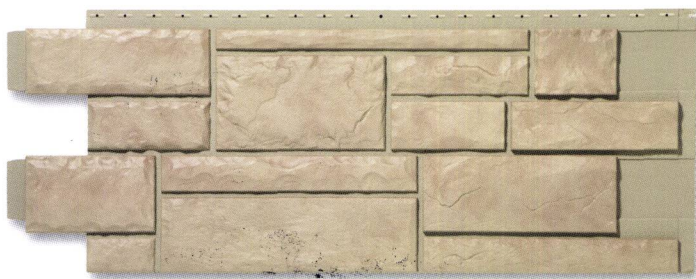
Hand-Cut Stone Panels

Adding distinction and refinement to your home at a fraction of the cost

AUTHENTICO
by novik



Innovative Polymer Siding FAST-series FIT



- Injection molded for superior quality
- High quality copolymer resists warping, impact and discoloration
- Available in a wide range of blended colors
- Seamless visual appearance
- Quick and easy installation
- Limited lifetime warranty
- Low maintenance

Distributed by:

MENARDS®

Trachte Building Systems Standard Trac-Rite Door Colors

- ❖ Trac-Rite doors are available in 11 durable, prefinished colors to complement any building.
- ❖ All door panels have a galvanized substrate and are coil-coated with a silicone polyester paint system for long life.
- ❖ All colors have a 30- or 25-year film integrity warranty and a 25- or 20-year color change and chalk warranty. Further warranty information is available upon request.



314 Wilburn Road • Sun Prairie, WI 53590
Phone 800-356-5824 • Fax 800-981-9014
www.trachte.com • tbs@trachte.com