

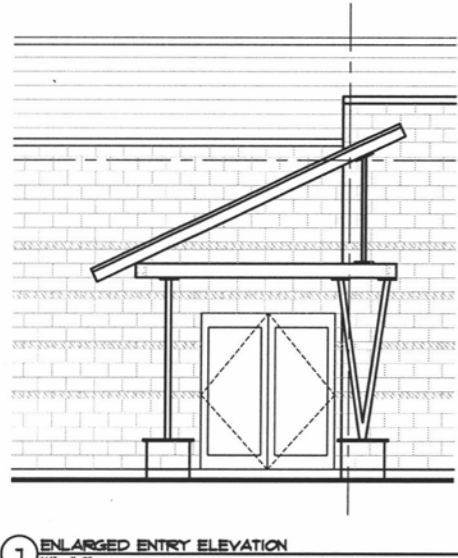
11UR012



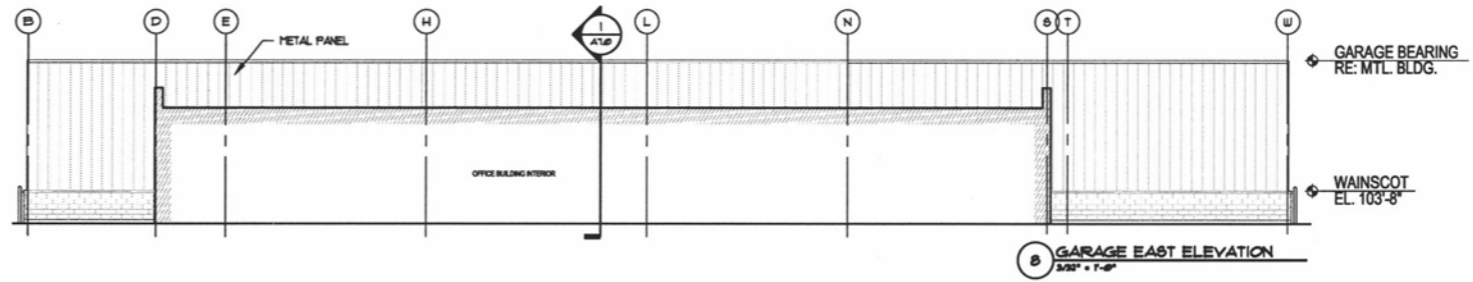
InVISION Studios



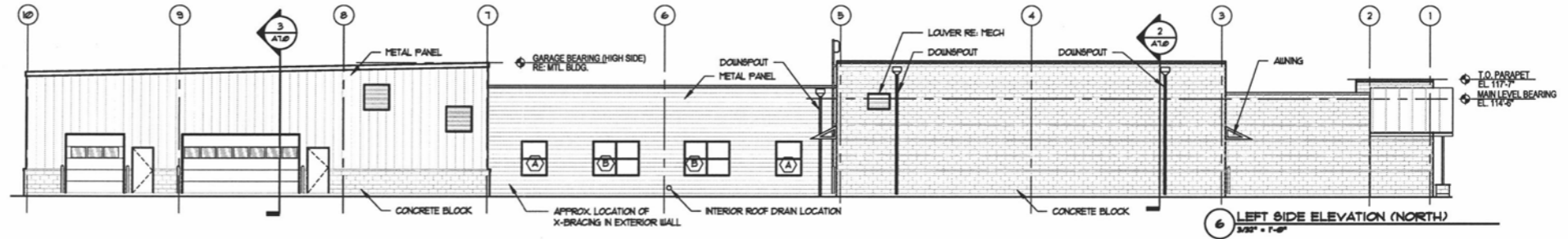
Department of Homeland Security
Rapid City, South Dakota
Developed by SBC ARCHWAY



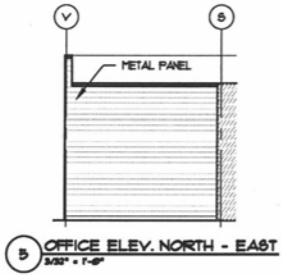
1 ENLARGED ENTRY ELEVATION
1/4" = 1'-0"



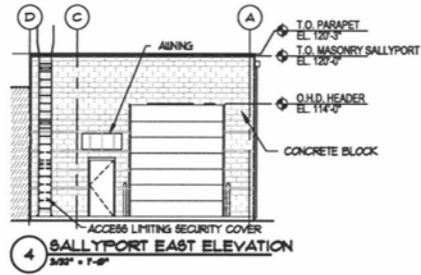
8 GARAGE EAST ELEVATION
3/32" = 1'-0"



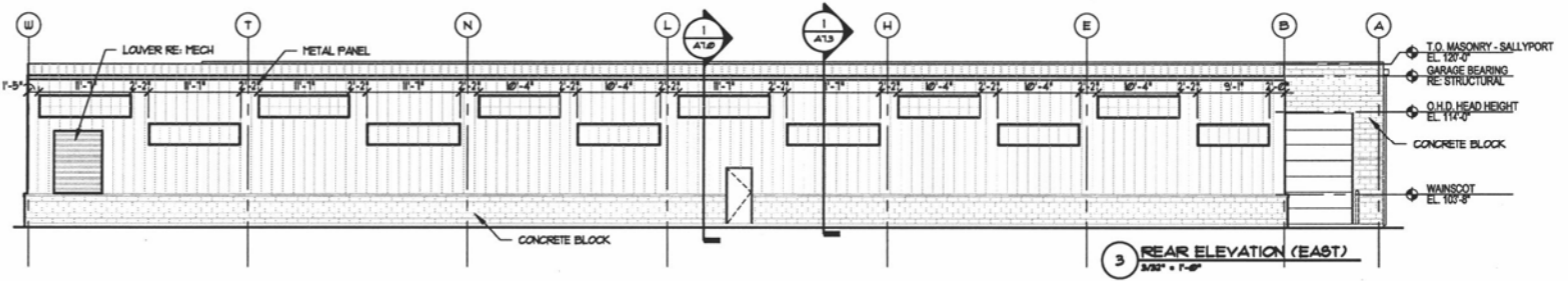
6 LEFT SIDE ELEVATION (NORTH)
3/32" = 1'-0"



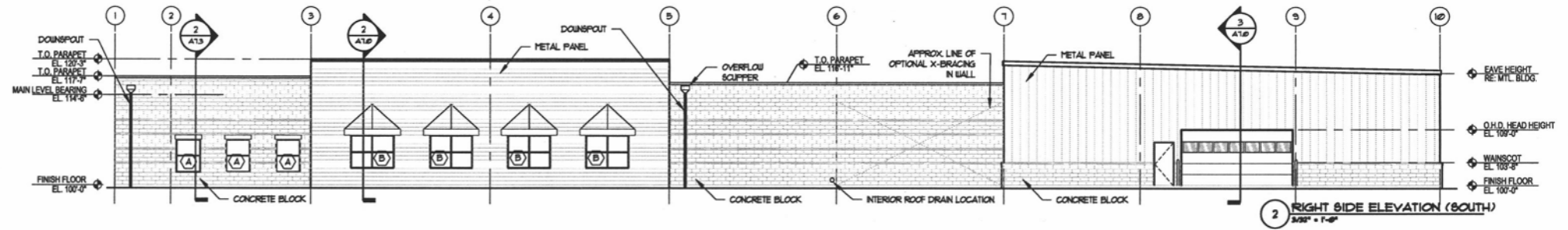
5 OFFICE ELEV. NORTH - EAST
3/32" = 1'-0"



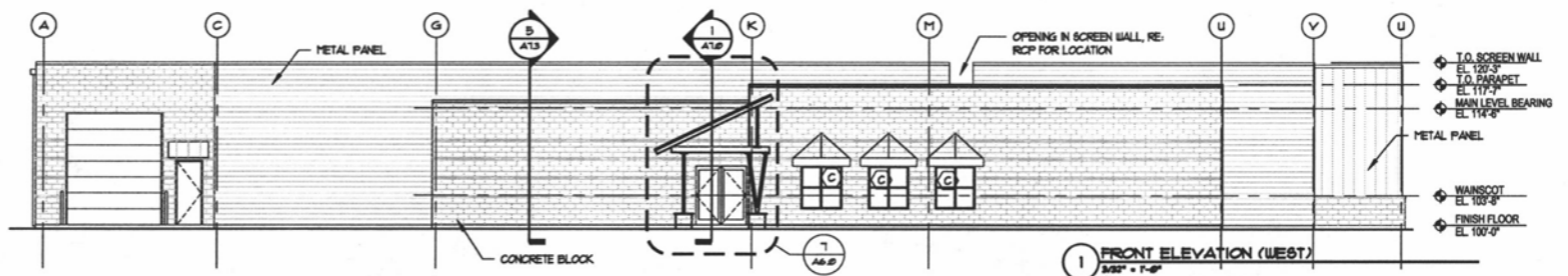
4 BALLYPORT EAST ELEVATION
3/32" = 1'-0"



3 REAR ELEVATION (EAST)
3/32" = 1'-0"



2 RIGHT SIDE ELEVATION (SOUTH)
3/32" = 1'-0"



1 FRONT ELEVATION (WEST)
3/32" = 1'-0"

RECEIVED

APR 29 2011

Rapid City Growth
Management Department

Rapid City ICE
2350 Sophia Court
Rapid City, South Dakota 57702

TAAG
ARCHITECTS

950 17th Street
Suite 2050
Denver, CO 80202
303-824-2745
303-824-2737 FAX
www.taagdenver.com

Issue Record

| Issue | Date |
|------------|------------|
| PERMIT SET | 04.01.2011 |
| | |
| | |
| | |
| | |

Project No: 11002.00
Date: 04.01.2011
Drawn: BAM
Checked: JA
Drawing Title:
EXTERIOR
ELEVATIONS

Sheet No.
A6.0