





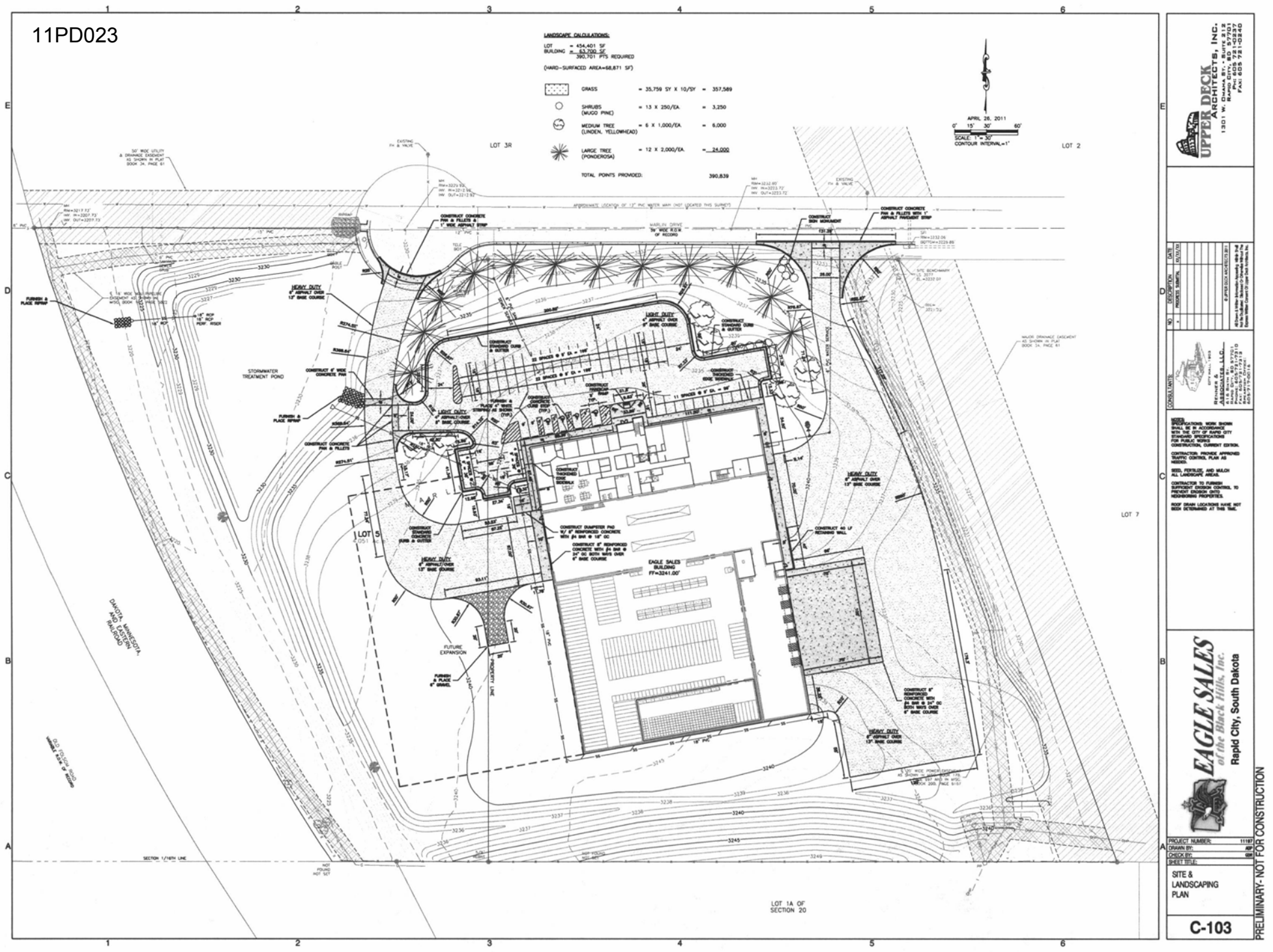
LANDSCAPE CALCULATIONS:

LOT = 454,401 SF  
 BUILDING = 63,708 SF  
 390,711 PFS REQUIRED  
 (HARD-SURFACED AREA=68,871 SF)

-  GRASS = 35,759 SY X 10/2Y' = 357,589
-  SHRUBS (DRUG PINK) = 13 X 250/EA. = 3,250
-  MEDIUM TREE (LUNDIN, YELLOWHEAD) = 6 X 1,000/EA. = 6,000
-  LARGE TREE (PONDEROSA) = 12 X 2,000/EA. = 24,000

TOTAL POINTS PROVIDED: 390,839

APRIL 26, 2011  
 OF 15' 30' 60'  
 SCALE: 1" = 30'  
 CONTOUR INTERVAL=1'



**UPPER DECK ARCHITECTS, INC.**  
 1301 W. GRAND AVENUE, SUITE 100  
 RAPID CITY, SD 57701  
 PHONE: 605.721.0240  
 FAX: 605.721.0240

NO.	DATE	BY	REVISION
1	04/26/11	MM	ISSUE FOR PERMIT

CONSULTANTS:  
 EARTHWORKS ARCHITECTS, INC.  
 415 S. MAIN ST., SUITE 100  
 RAPID CITY, SD 57701  
 PHONE: 605.721.0240  
 FAX: 605.721.0240

CONTRACTOR'S OBLIGATION: THE CONTRACTOR SHALL BE RESPONSIBLE FOR OBTAINING ALL NECESSARY PERMITS AND APPROVALS FROM THE CITY OF RAPID CITY. THE CONTRACTOR SHALL BE RESPONSIBLE FOR OBTAINING ALL NECESSARY PERMITS AND APPROVALS FROM THE CITY OF RAPID CITY. THE CONTRACTOR SHALL BE RESPONSIBLE FOR OBTAINING ALL NECESSARY PERMITS AND APPROVALS FROM THE CITY OF RAPID CITY.

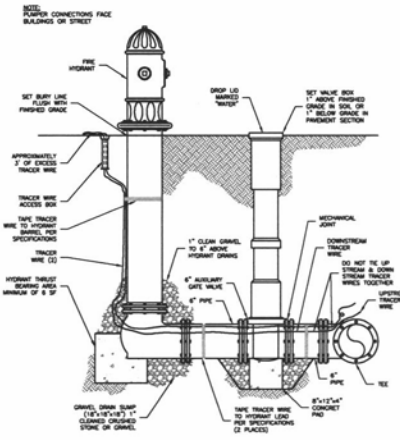
CONTRACTOR TO FURNISH ALL MATERIALS AND LABOR NECESSARY FOR THE COMPLETION OF THE PROJECT. THE CONTRACTOR SHALL BE RESPONSIBLE FOR OBTAINING ALL NECESSARY PERMITS AND APPROVALS FROM THE CITY OF RAPID CITY. THE CONTRACTOR SHALL BE RESPONSIBLE FOR OBTAINING ALL NECESSARY PERMITS AND APPROVALS FROM THE CITY OF RAPID CITY.

**EAGLE SALES**  
*at the Black Hills, Inc.*  
 Rapid City, South Dakota

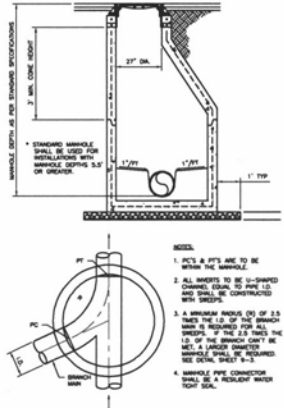
PROJECT NUMBER: 11119  
 DRAWN BY: [Signature]  
 CHECKED BY: [Signature]  
 SHEET TITLE: SITE & LANDSCAPING PLAN

**C-103**

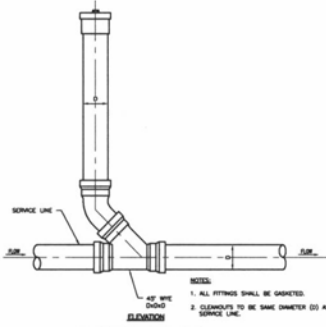
PRELIMINARY - NOT FOR CONSTRUCTION



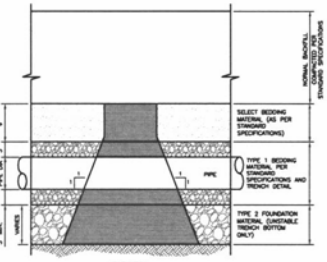
**HYDRANT SETTING DETAIL**  
NTS



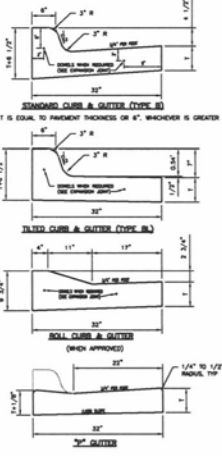
**STANDARD 48\"/> & 60\"/> MANHOLE  
DETAIL WITH MONOLITHIC BASE**  
CITY OF RAPID CITY DETAIL 9-1  
NTS



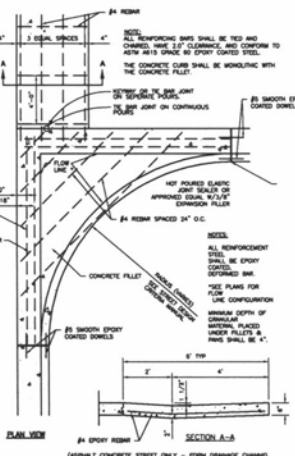
**CLEANOUT DETAIL**  
CITY OF RAPID CITY DETAIL 9-10  
NTS



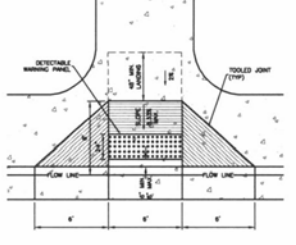
**TYPICAL TRENCH CHECK DAM DETAIL  
FOR WATER & SEWER MAIN**  
CITY OF RAPID CITY DETAIL 11-2  
NTS



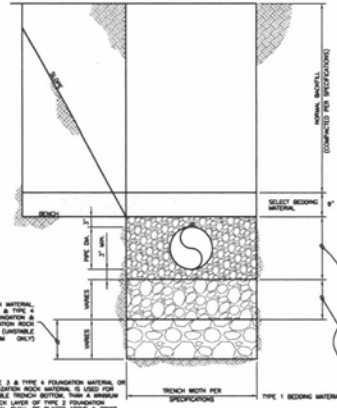
**CURB & GUTTER**  
CITY OF RAPID CITY DETAIL 60-2  
NTS



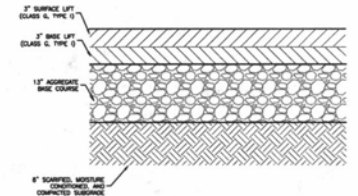
**REINFORCED PORTLAND CEMENT  
CONCRETE FILLET & PAN**  
CITY OF RAPID CITY DETAIL 60-1  
NTS



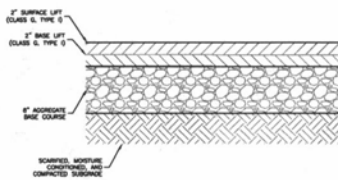
**SIDEWALK-ADJACENT RAMPS**  
NTS



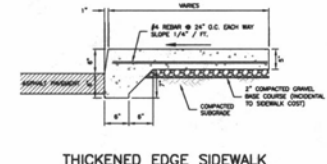
**TRENCH DETAIL FOR  
WATER & SEWER MAIN**  
CITY OF RAPID CITY DETAIL 11-3  
NTS



**HEAVY-DUTY ASPHALT PAVEMENT DETAIL**  
NTS



**LIGHT-DUTY ASPHALT PAVEMENT DETAIL**  
NTS



**THICKENED EDGE SIDEWALK**  
NTS

**UPPER DECK ARCHITECTS, INC.**  
1301 W. CHAMBERLAIN BLVD., SUITE 212  
RAPID CITY, SD 57701  
PHONE: 605.342.4222  
FAX: 605.342.4224

NO.	DESCRIPTION	DATE	BY
1	PROJECT SHEET		

**CONSULTANTS:**  
CITY OF RAPID CITY  
ENGINEER: [Signature]  
CITY ENGINEER: [Signature]

**NOTES:**  
1. ALL DIMENSIONS UNLESS OTHERWISE NOTED SHALL BE IN FEET AND INCHES.  
2. ALL DIMENSIONS SHALL BE TO FACE UNLESS OTHERWISE NOTED.  
3. ALL DIMENSIONS SHALL BE TO CENTERLINE UNLESS OTHERWISE NOTED.  
4. ALL DIMENSIONS SHALL BE TO SURFACE UNLESS OTHERWISE NOTED.  
5. ALL DIMENSIONS SHALL BE TO CENTERLINE UNLESS OTHERWISE NOTED.  
6. ALL DIMENSIONS SHALL BE TO SURFACE UNLESS OTHERWISE NOTED.  
7. ALL DIMENSIONS SHALL BE TO CENTERLINE UNLESS OTHERWISE NOTED.  
8. ALL DIMENSIONS SHALL BE TO SURFACE UNLESS OTHERWISE NOTED.  
9. ALL DIMENSIONS SHALL BE TO CENTERLINE UNLESS OTHERWISE NOTED.  
10. ALL DIMENSIONS SHALL BE TO SURFACE UNLESS OTHERWISE NOTED.

**EAGLE SALES**  
of the Black Hills, Inc.  
Rapid City, South Dakota

PROJECT NUMBER: 11187  
DRAWN BY: [Signature]  
CHECK BY: [Signature]  
SHEET TITLE: DETAILS

**C-104**

PRELIMINARY - NOT FOR CONSTRUCTION