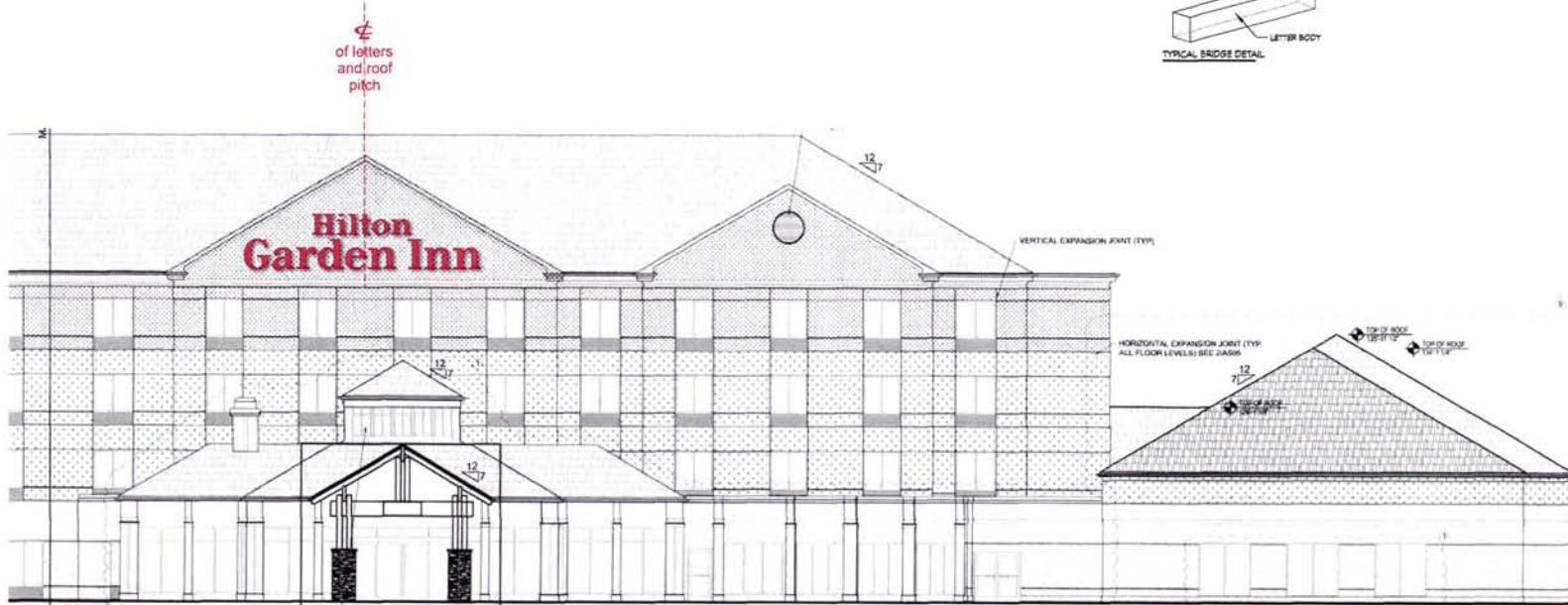
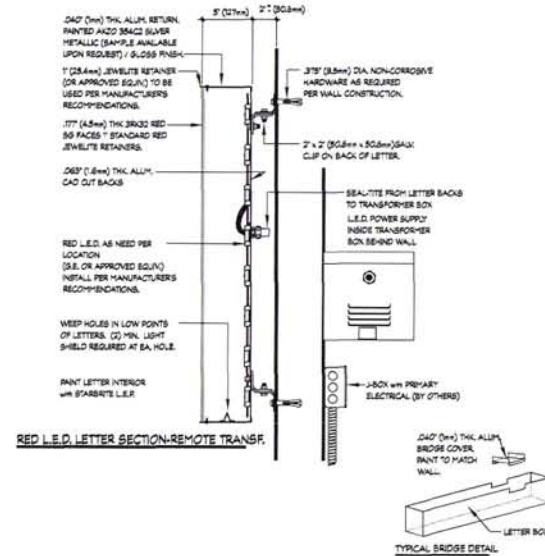




SIGN A

1/8" = 1'-0"

Manufacture and install one (1) set of illuminated acrylic face channel letters.



Front Elevation

1/16" = 1'-0"



Design # 11-0356

Sheet 1 of 3

Client Hilton Garden Inn

Address Rapid City, SD

Account Rep. Bill Teel

Designer PC

Date 04Mar11

Approval / Date

Client	
Sales	
Estimating	
Art	
Engineering	
Landlord	

Revision / Date



www.chandleresigns.com

2104 Manor Way Dallas, TX 75235
214-902-2000 Fax 214-902-2044

1206 Vallant San Antonio, TX 78216
210-349-3804 Fax 210-349-8724

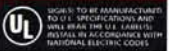
2420 Vista Way Ste. 200
Oceanside, CA 92054
760-967-7003 Fax 760-967-7033

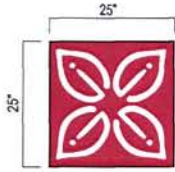
750 E. Hwy. 24 - Bldg. 2 Ste. 200
Woodland Park, CO 80083
719-687-2507 Fax 719-687-2506

P.O. Box 43123 Louisville, KY 40213
502-489-3660 Fax 502-254-3843

This drawing is the property of Chandler Signs, L.P. and all rights to its use for reproduction are reserved by Chandler Signs, L.P.

FINAL ELECTRICAL CONNECTION BY CUSTOMER





SIGN B 1/2"=1'-0"
Manufacture and install one (1) single face internally illuminated logo.

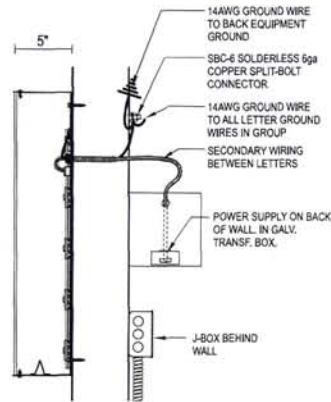
FABRICATED 5" (127mm) DEEP PRE-FORMED ALUMINUM CHANNEL LOGO.

1" (25.4mm) RED JEWELITE (OR APPROVED EQUIV.) RETAINERS. .177" (4.5mm) THK WRT30 WHITE CYRO SG FACE W/ 1st SURFACE 3M (OR APPROVED EQUIV.) 3650-73 RED VINYL BACKGROUND / "FLORET" DESIGN CUT OUT OF RED VINYL OVERLAY - WHITE SHOWS THRU.

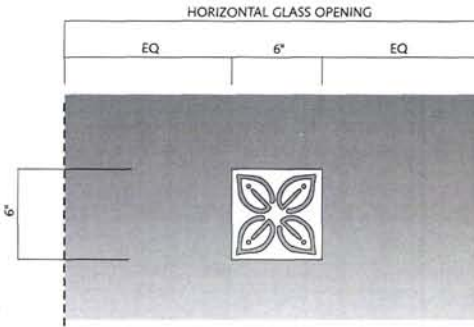
OUTSIDE RETURNS PAINTED AKZO 354C2 SILVER METALLIC (SAMPLE AVAILABLE UPON REQUEST) / GLOSS FINISH - INSIDE SIGN PAINTED LIGHT ENHANCING WHITE.

SIGN INTERNALLY ILLUMINATED W/ WHITE L.E.D. (G.E. OR APPROVED EQUIV.) TO BE INSTALLED PER MANUFACTURER'S RECOMMENDATIONS.

SIGN MOUNTED FLUSH TO BUILDING FASCIA - ATTACH TO WALL WITH NON-CORROSIVE FASTENERS AS REQUIRED PER WALL CONSTRUCTION.

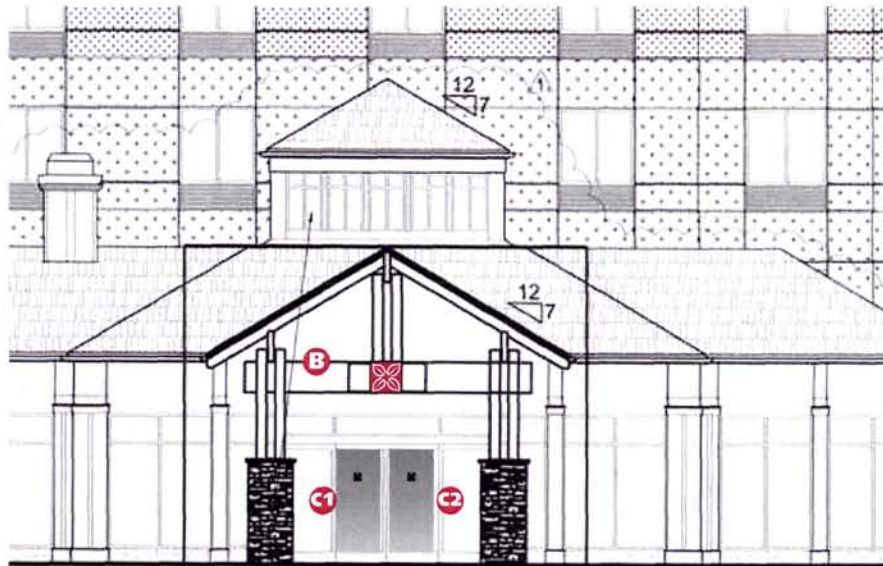


Logo Sec.
NTS



SIGNS C1 C2 1 1/2"=1'-0"
Furnish and install two (2) vinyl floret logos.

OPAQUE WHITE VINYL "FLORET":
 3M 3650-10 WHITE "FLORET" LOGO APPLIED TO 1st SURFACE OF DOOR GLASS - CENTERED VERTICALLY & POSITION 4'-6" ABOVE FINISHED FLOOR UNLESS CIRCUMSTANCES DETERMINE OTHERWISE (VERIFY)



Front Elevation (partial) 1/8"=1'-0"



Design #
11-0356

Sheet 2 of 3

Client
Hilton Garden Inn

Address
Rapid City, SD

Account Rep. Bill Teel
 Designer PC
 Date 04Mar11

Approval / Date

Client	
Sales	
Estimating	
Art	
Engineering	
Landlord	

Revision / Date

Chandler Signs
www.chandlersigns.com

3201 Manor Way Dallas, TX 75235
214-902-2000 Fax 214-902-2044

12104 Valliant San Antonio, TX 78216
210-349-3804 Fax 210-349-8724

2420 Vista Way Ste. 200
Oceanside, CA 92054
760-967-7003 Fax 760-967-7033

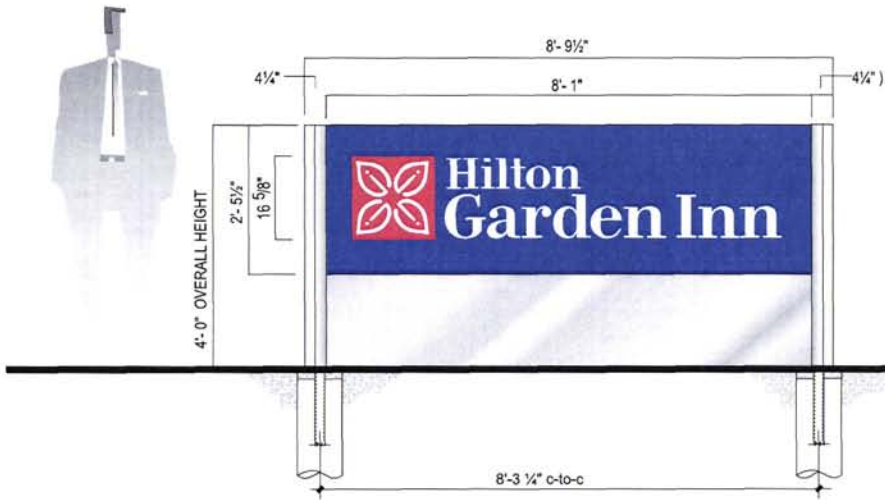
750 E. Hwy 24 - Bldg. 2 Ste. 200
Woodland Park, CO 80863
719-687-2507 Fax 719-687-2506

P.O. Box 43223 Louisville, KY 40253
502-489-3660 Fax 502-254-3843

This drawing is the property of Chandler Signs, LP and all rights to it, and for reproduction are reserved by Chandler Signs, LP.

FINAL ELECTRICAL CONNECTION BY CUSTOMER





SIGN D 1/2"=1'-0"
Manufacture and install one (1) double face illuminated monument sign.

FABRICATED ALUMINUM SIGN CABINET WITH ROUTED OUT OPENINGS FOR LETTERS AND SQUARE OPENING FOR LOGO - FACES AND FILLERS PRIMED & PAINTED TO MATCH PMS 2756c BLUE SATIN FINISH - PAINT INTERIOR LIGHT ENHANCING WHITE

"HILTON GARDEN INN" LETTERS .125" (3.2mm) THK. WRT30 WHITE CYRO SG SHOW THRU ACRYLIC (OPTIONAL MODIFIER COPY SAME SPECS AS "HILTON")

"LOGO" .125" (3.2mm) THK. WRT30 WHITE CYRO SG ACRYLIC WITH 3M (OR APPROVED EQUIV.) 3630-73 RED VINYL APPLIED TO FIRST SURFACE - REVERSE WEEDED FOR WHITE "FLORET" LOGO GRAPHIC TO SHOW THRU.

.080" (2mm) THK. ALUM. BASE PANELS (RECESSED) AND CONVEX SHAPED COVERS WITH CAPS ON END FILLERS OF SIGN - PAINTED AKZO 354C2 SILVER METALLIC (SAMPLE AVAILABLE UPON REQUEST) / GLOSS FINISH

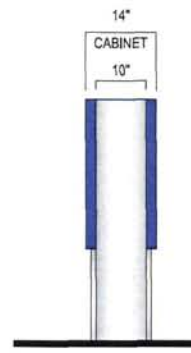
OPTIONAL "DIRECTIONAL COPY" ROUTED OUT OF BASE PANEL & BACKED WITH SHOW THRU - .125" (3.2mm) THK. WRT30 WHITE CYRO SG ACRYLIC WITH FIRST SURFACE 3M (OR APPROVED EQUIV.) 3630-73 RED VINYL OVERLAY.

SIGNS INTERNALLY ILLUMINATED WITH 800mA HI-OUTPUT DAYLIGHT FLUORESCENT LAMPS UNDERGROUND ELECTRICAL SERVICE PROVIDED TO SIGN BY CUSTOMER'S ELECTRICAL CONTRACTOR - COORDINATE WITH SIGN MANUFACTURER AS TO PRIMARY VOLTAGE REQUIREMENTS. SIGN CONTRACTOR TO MAKE FINAL CONNECTION AS DETERMINED BY LOCAL SIGN ORDINANCES.

TS 2" x 2" x .187" (50.8mm x 50.8mm x 4.8mm) STEEL TUBE SUPPORTS with 9" (228.6mm) DIA. x 2'-6" (762mm) DEEP CONCRETE PIER FOUNDATION. FOUNDATION SET 2" (50.8mm) BELOW GRADE.

STEEL SIGN SUPPORTS MOUNTED IN CONCRETE PIER TYPE FOUNDATIONS - SIZE & DEPTH SHOWN TO BE CONFIRMED BY LOCAL CODES & CONDITIONS.

SUPPORTS DESIGNED FOR 30PSF WINDLOAD.



END VIEW



Design # 11-0356
Sheet 3 of 3

Client
Hilton Garden Inn
Address
Rapid City, SD

Account Rep. Bill Teel
Designer PC
Date 04Mar11

Approval / Date	
Client	
Sales	
Estimating	
Art	
Engineering	
Landlord	

Revision / Date

Revision / Date



www.chandler-signs.com

2201 Manor Way Dallas, TX 75235
214-902-2000 Fax 214-902-2044

1206 Valliant San Antonio, TX 78216
210-349-3804 Fax 210-349-8774

2420 Vista Way Ste. 200
Dunsmuir, CA 92054
760-967-7003 Fax 760-967-7033

750 E. Hwy. 24 - Bldg. 2 Ste. 200
Woodland Park, CO 80863
719-687-2507 Fax 719-687-2506

P.O. Box 43223 Louisville, KY 40232
502-489-3660 Fax 502-254-3843

This drawing is the property of Chandler Signs, L.P. and all rights in it and its reproduction are reserved by Chandler Signs, L.P.

FINAL ELECTRICAL CONNECTION BY CUSTOMER

