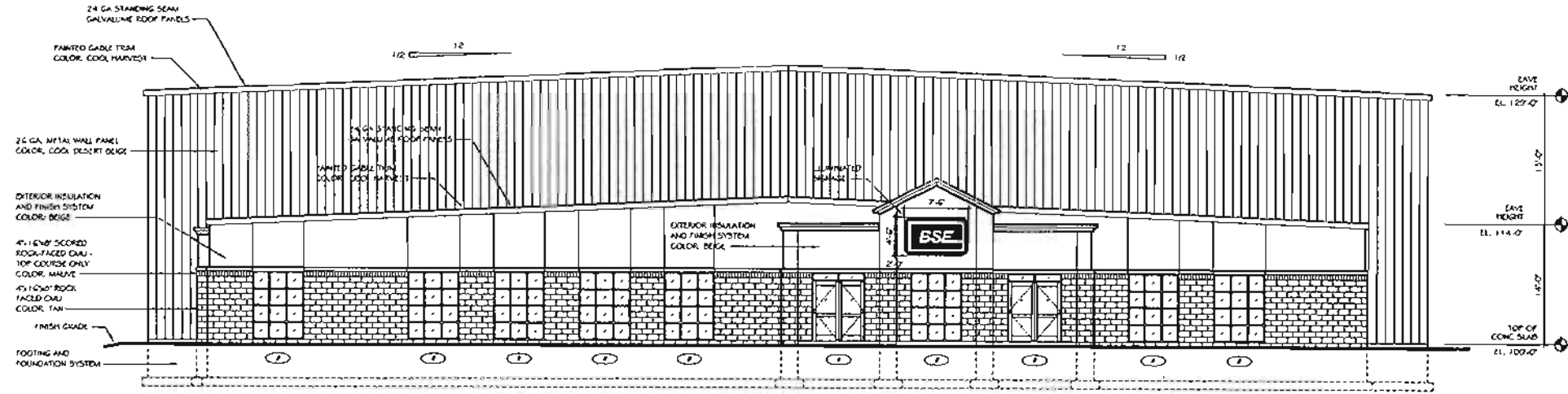
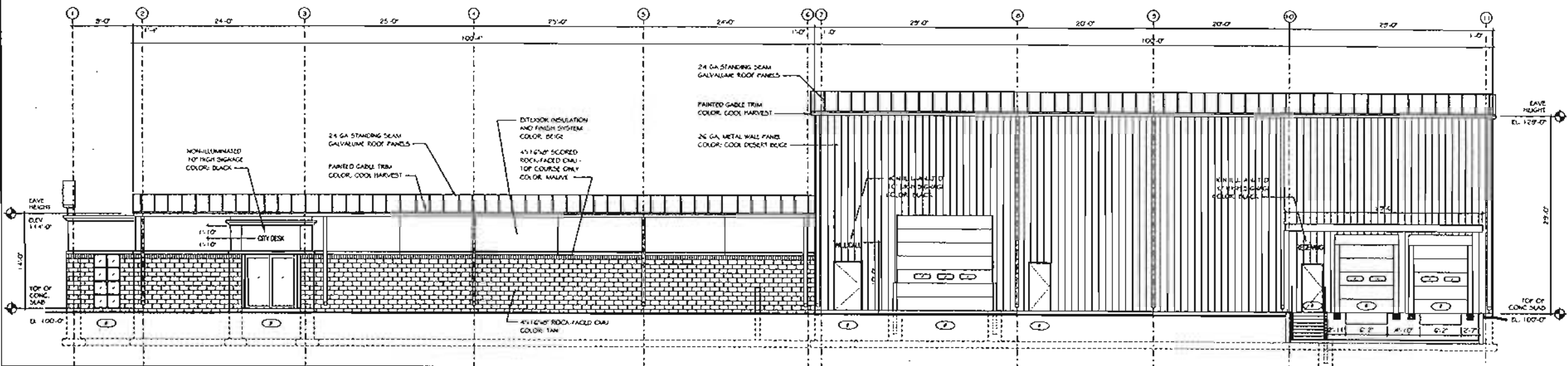


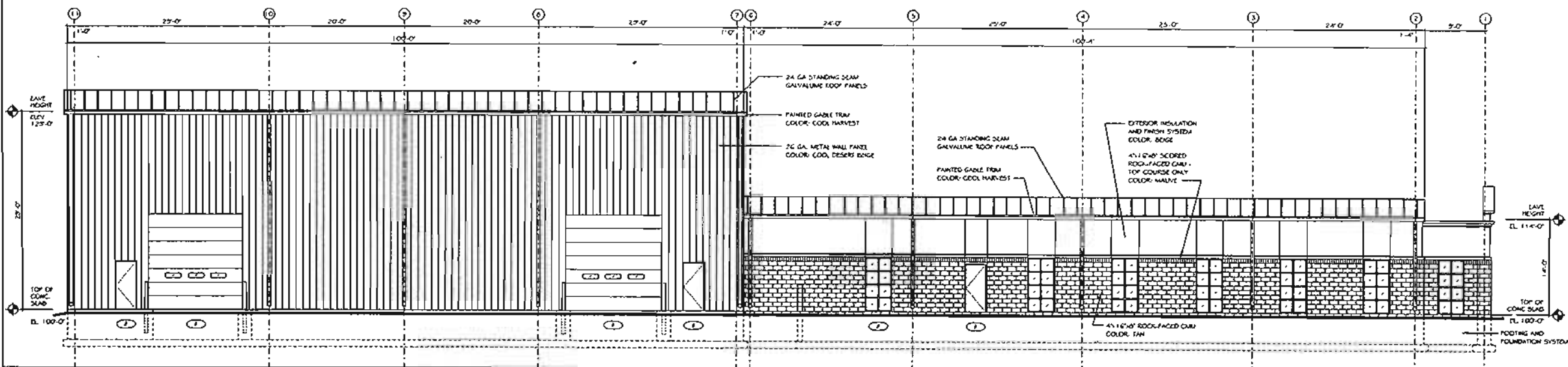
- NOTE:
- ALUMINUM WINDOW FRAMES
 DOORS AND DOOR FRAMES
 COLOR: DARK BRNZN
 - HOLLOW METAL FRAMES
 AND DOORS -
 COLOR: PAINTED TO MATCH
 ADJACENT WALL COLOR
 - OVERHEAD DOORS -
 COLOR: WHITE



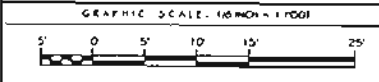
1 SOUTH ELEVATION SCALE: 1/8" = 1'-0"



2 EAST ELEVATION SCALE: 1/8" = 1'-0"



3 WEST ELEVATION SCALE: 1/8" = 1'-0"



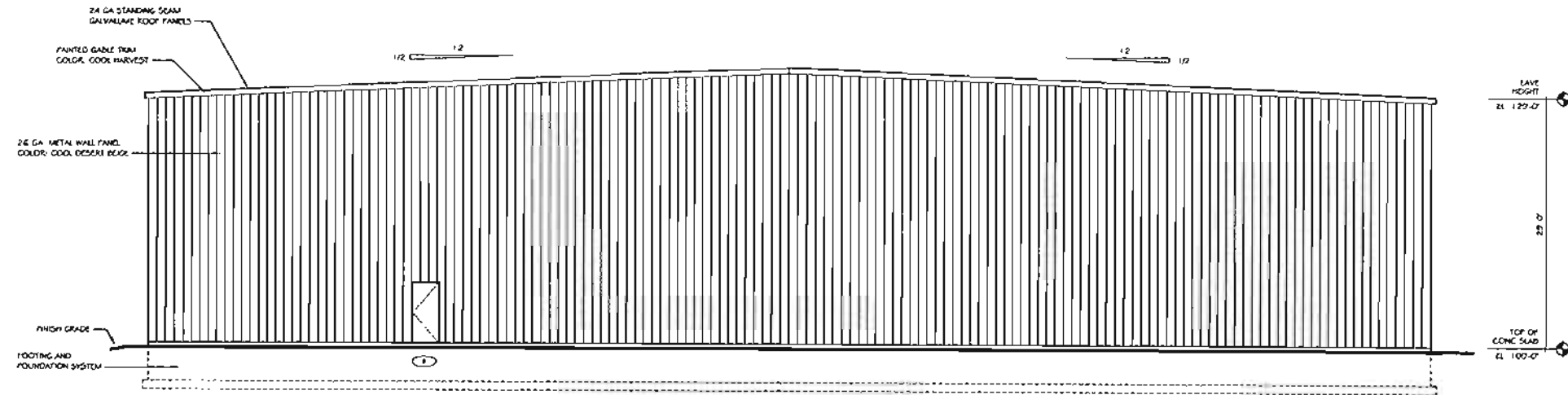
PROJECT TITLE
NEW BUILDING
BORDER STATES ELECTRIC
 28,500 SQUARE FOOT FACILITY
 RAPID CITY, SOUTH DAKOTA

PROJECT NUMBER	ISSUE DATE	ISSUE DATE
		02 / 18 / 11
SUBMITTALS		REVISIONS
NO.	DATE	COMMENTS

SHEET TITLE
 NORTH ELEVATION
 WEST ELEVATION
 EAST ELEVATION

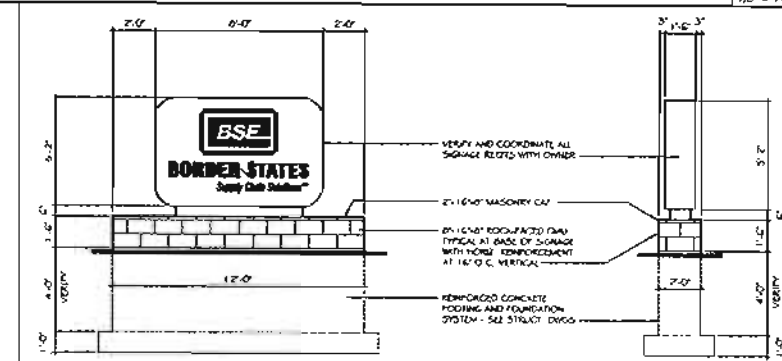
SHEET NUMBER
A2
 SHEET 2 OF 3

NOTED THIS SHEET



1 NORTH ELEVATION

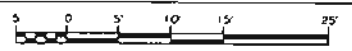
SCALE:
1/8" = 1'-0"



2 MONUMENT SIGN - FRONT AND LATERAL ELEVATIONS

SCALE:
1/8" = 1'-0"

GRAPHIC SCALE: 1/8" INCH = 1 FOOT



PROJECT TITLE
NEW BUILDING
BORDER STATES ELECTRIC
28,500 SQUARE FOOT FACILITY
RAPID CITY, SOUTH DAKOTA

PROJECT NUMBER: NO DATE: ISSUE DATE:
02 / 18 / 11

SUBMITTALS		REVISIONS	
NO	DATE	NO	DATE

SHEET TITLE: SOUTH ELEVATION MONUMENT SIGN
SHEET NUMBER: **A3**
SHEET 3 OF 3