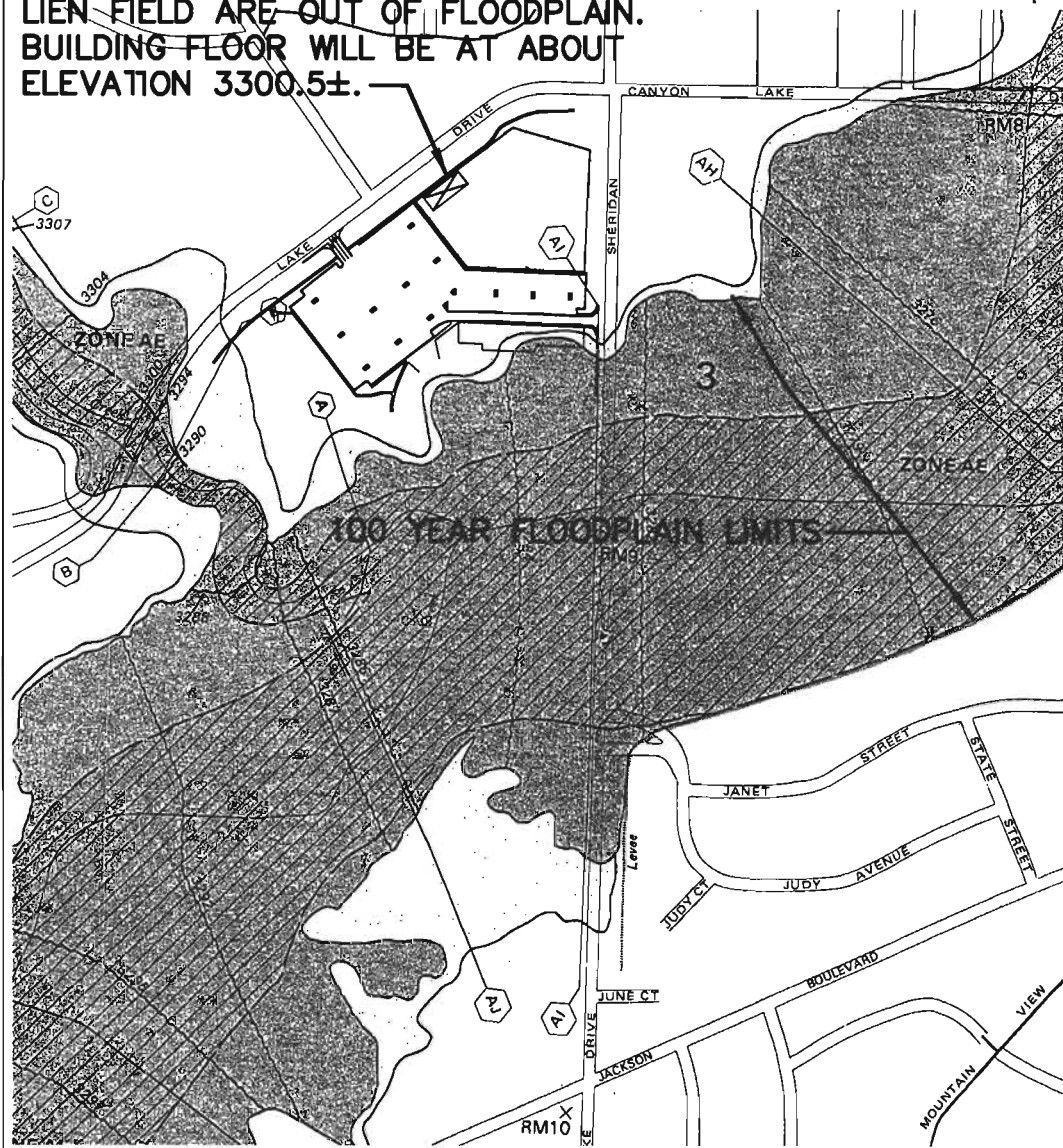
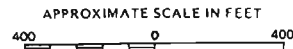


APPROXIMATE LOCATION OF PROPOSED STORAGE BUILDING. BUILDING AND PETE LIEN FIELD ARE OUT OF FLOODPLAIN. BUILDING FLOOR WILL BE AT ABOUT ELEVATION 3300.5±.



NATIONAL FLOOD INSURANCE PROGRAM

FIRM
FLOOD INSURANCE RATE MAP

CITY OF
RAPID CITY,
SOUTH DAKOTA
PENNINGTON COUNTY

(SEE MAP INDEX FOR PANELS NOT PRINTED)

COMMUNITY-PANEL NUMBER
465420 0004 F

MAP REVISED:
FEBRUARY 16, 1996



Federal Emergency Management Agency

F M G, Inc.
3700 Starline Road
Rapid City, SD 57702-0017
(605) 342-4106 FAX (605) 343-4822



File Number: **4753**
Location: **SE 1/4, NW 1/4, SEC. 3, T15, R27, S18**
Surveyed By: **DMC**
Date: **DEC 2011**
Designed By: **DMC**
Drawn By: **DMC**
Checked By: **DMC**

**TRAINING CENTER
IMPROVEMENTS
PETE LIEN FIELD
320 STARS BASEBALL
RAPID CITY, SOUTH DAKOTA**

Revision / Date

Sheet Name:
**FLOODPLAIN
MAP**

Sheet Number:

5

Total Sheets:

5