

LOT 1 OF TRACT 3
DISCOVERY SUBDIVISION



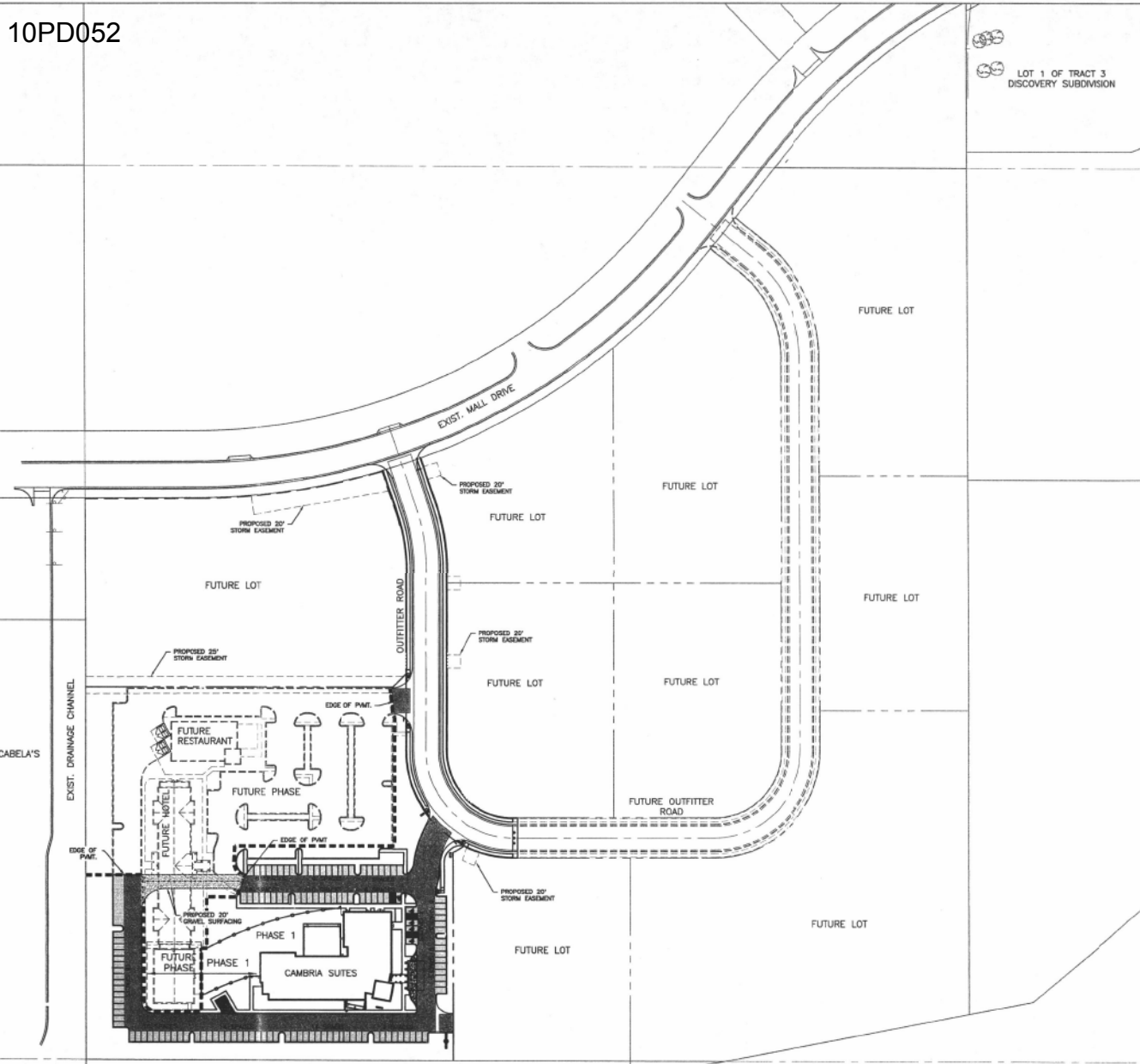
CITY OF RAPID CITY
GROWTH MANAGEMENT DEPT.
DEVELOPMENT SERVICES

Plans are released for general conformances with applicable governmental regulations, stipulations, design criteria and engineering standards. The City of Rapid City does not certify the suitability, adequacy or completeness of the plans or design, which are the responsibility of the engineer of record. All necessary permits shall be obtained prior to construction of the proposed public improvements.

Engineers/ Reviewer: DISB
Comments:

Submitted: _____
Revisions: _____

Internal Job No: 10-0558
Designed By: CSB/DE
Drawn By: PLANBY
Surveyed By: RENNER
Survey Date: 8/11/2010



LEGEND

- HEAVY DUTY PAVEMENTS - 6" ASPHALT WITH 8" AGGREGATE BASE COURSE
- LIGHT DUTY PAVEMENTS - 5" ASPHALT WITH 6" AGGREGATE BASE COURSE
- CONCRETE PAVEMENT AREAS - 6" CONCRETE WITH 6" AGGREGATE BASE COURSE
- PROPOSED TEMPORARY GRAVEL ROAD
- PHASE LINE

NOTES:

- ALL SIDEWALKS ON THIS PROJECT SHALL BE 4" THICK WITH 2" GRAVEL CUSHION.
- ALL DIMENSIONS ARE TO FACE OF CURB OR TO EDGE OF STRIPING.
- FOR CURB RADII INFORMATION, SEE THE SITE LAYOUT & STRIPING PLAN.
- PARKING SUMMARY:**
TOTAL PARKING REQUIRED = 273 STALLS
TOTAL PARKING PROVIDED = 301 STALLS
TOTAL HANDICAPED PROVIDED = 15 STALLS
- PHASE 1 PARKING:**
TOTAL = 125 STALLS
PHASE 1 HANDICAPED = 5 STALLS
PHASE 1 TOTAL = 130 STALLS
PHASE 1 REQUIRED = 110 STALLS



DREAM DESIGN INTERNATIONAL, INC.
ENGINEERING, LANDSCAPE ARCHITECTURE,
LAND PLANNING, CONSTRUCTION ADMINISTRATION
528 KANSAS CITY STREET, SUITE 4, RAPID CITY, SD 57701
PHONE: (605) 348-0538 FAX: (605) 348-0545 WWW.DREAMDESIGNING.CO.COM

**GATEWAY BUSINESS PARK SUBDIVISION
CAMBRIA HOTEL**

Project Name

Sheet Name: