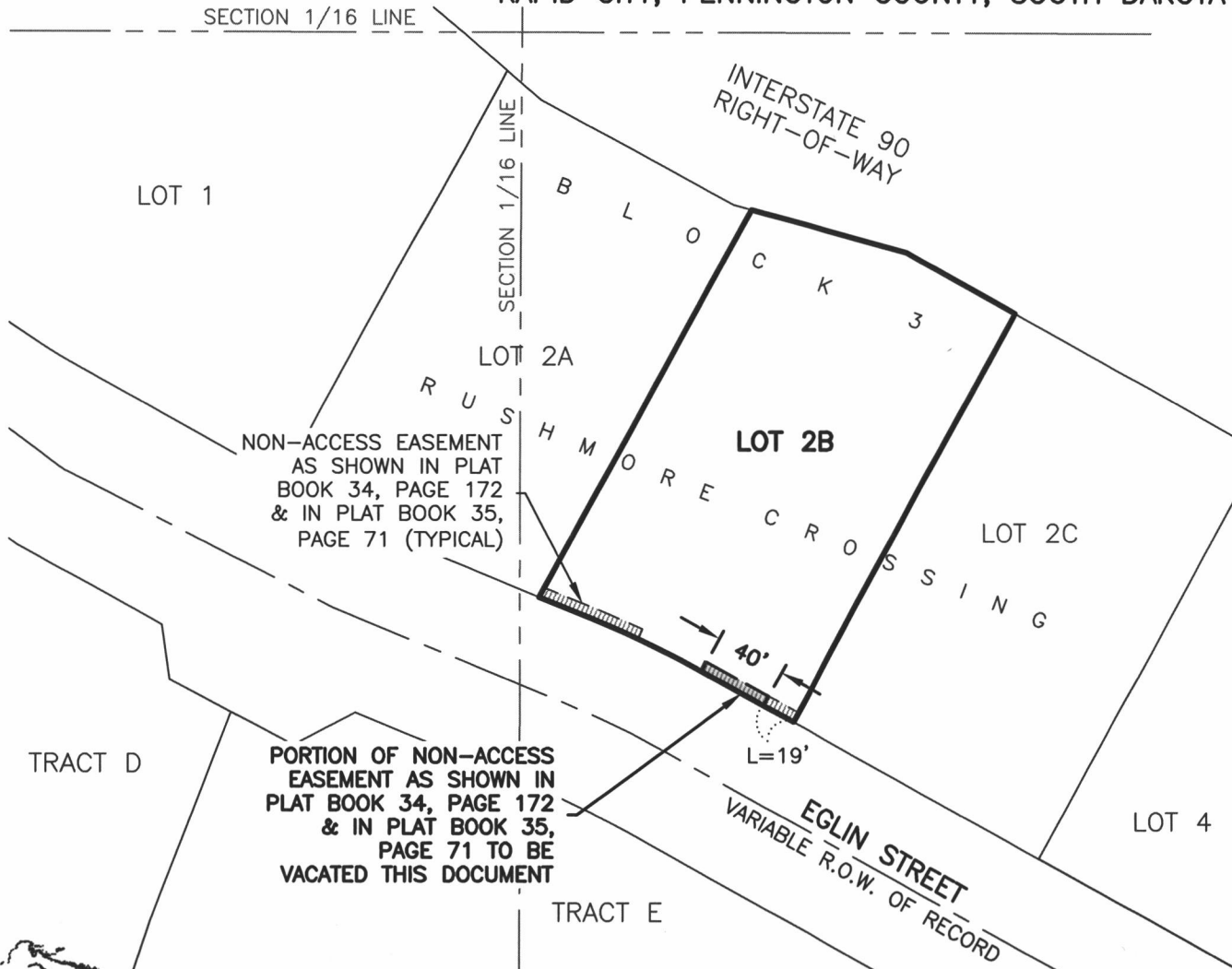


EXHIBIT 'A' VACATION OF NON-ACCESS EASEMENT LOT 2B, BLOCK 3 RUSHMORE CROSSING

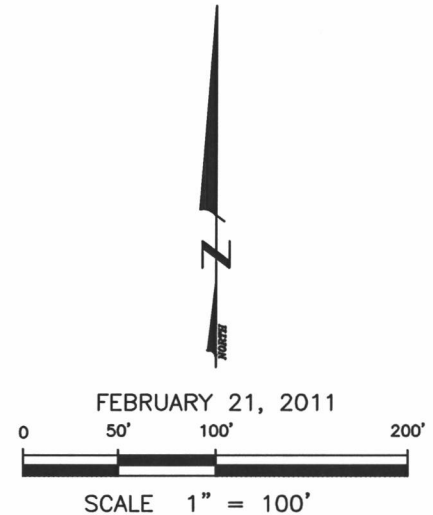
LOCATED IN THE SE1/4 OF THE SW1/4,
SECTION 29, T2N, R8E, BHM

RAPID CITY, PENNINGTON COUNTY, SOUTH DAKOTA



NON-ACCESS EASEMENT
AS SHOWN IN PLAT
BOOK 34, PAGE 172
& IN PLAT BOOK 35,
PAGE 71 (TYPICAL)

PORTION OF NON-ACCESS
EASEMENT AS SHOWN IN
PLAT BOOK 34, PAGE 172
& IN PLAT BOOK 35,
PAGE 71 TO BE
VACATED THIS DOCUMENT



RENNER & ASSOCIATES, LLC.

616 SIXTH ST. * RAPID CITY, SD 57701
PHONE: 605/721-7310 * FAX: 605/721-7313
EMAIL: GARY@RENNERASSOC.COM

CITY HALL 1903