

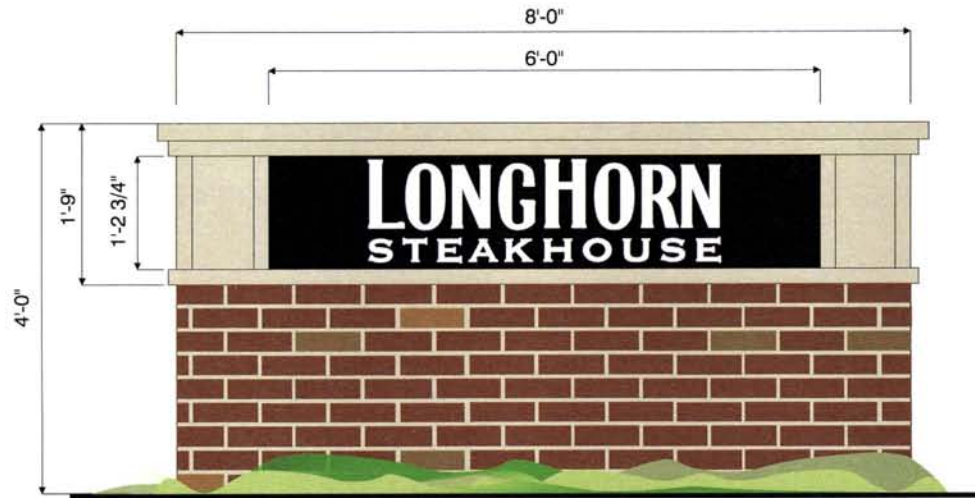
OEA allows custom design 7.4 SF Monument at 4' OAH. 95% chance of approval for this sign.

### Custom Monument

Store #TBD

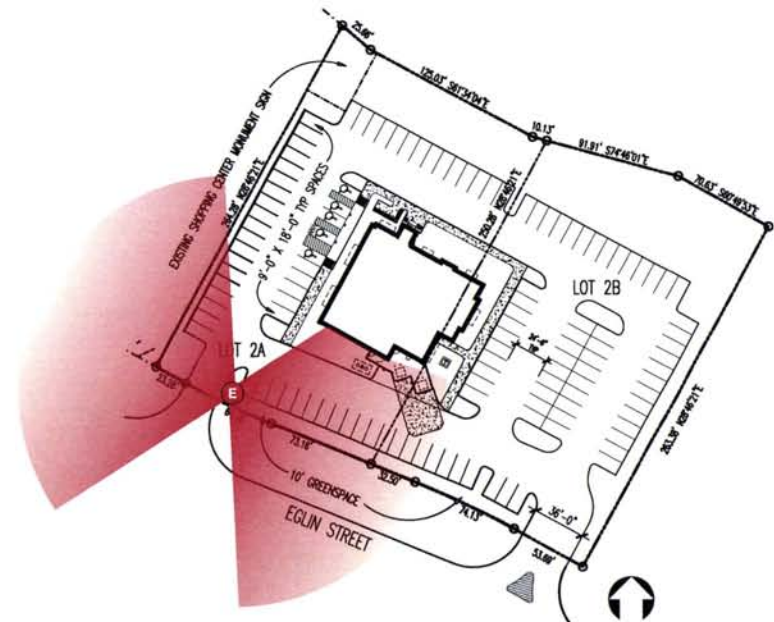
SVI Rating: 3.5

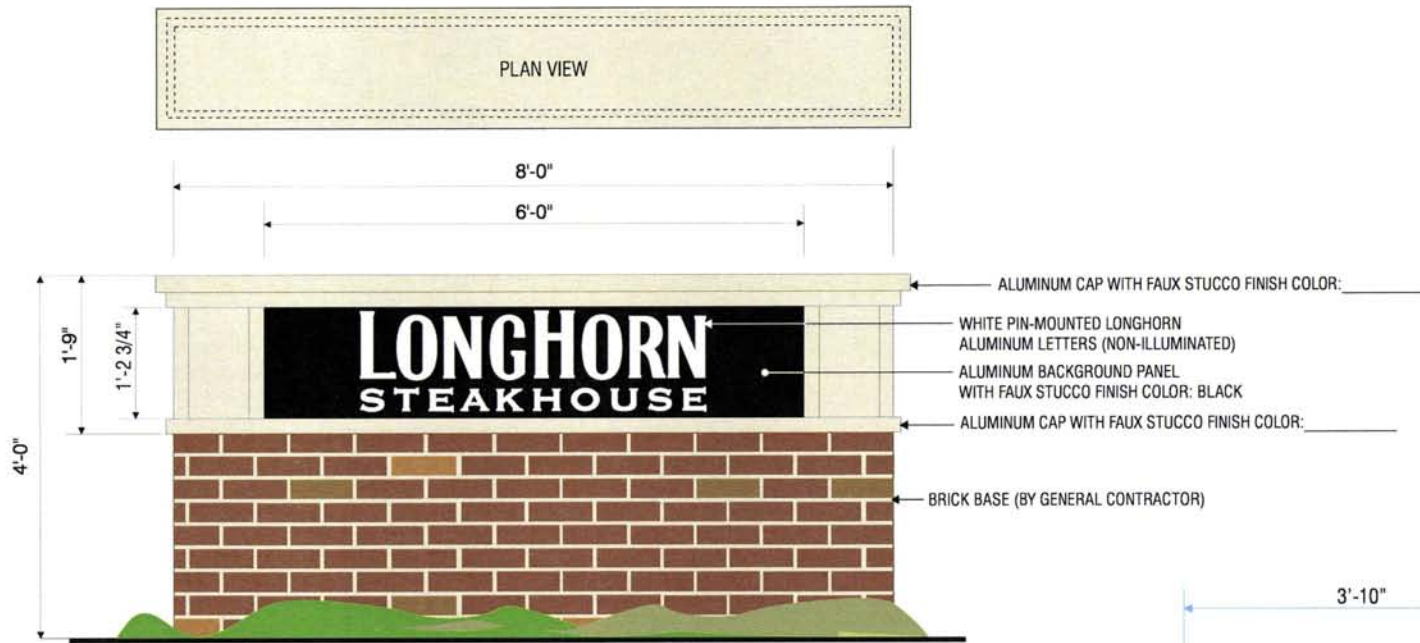
Developer Approval Required



Custom Monument  
Utilized Square Footage: 7.4 | Allowed Square Footage: 7.4  
Scale: 1/2"=1'

*Design shown is example only and is subject to change.  
Manufacturing details required from sign company.*





Custom Monument | DOUBLE-FACED NON-ILLUMINATED | ONE(1) REQ'D  
 Utilized Square Footage: 7.4 | Allowed Square Footage: 7.4  
 scale 3/4" = 1'-0"



EXTERIOR LIGHTING REQUIRED ON SIGN  
 SPECIFICATIONS AND RESPONSIBILITIES TO BE DETERMINED

**CUSTOMER TO PROVIDE:**

- ALL BRANCH (PRIMARY ELECTRICAL SERVICE) CIRCUITS & FINAL CONNECTION TO EACH SIGN (WITHIN 5 FT.) TO BE BY CERTIFIED ELECTRICIAN:
- A. All branch circuits for signs must be totally dedicated to signs (including dedicated ground and dedicated neutral per circuit).
  - B. Sign circuits must not be shared with other loads such as lighting, air conditioning, and other equipment.
  - C. Properly sized ground wire that can be traced back to the breaker panel must be provided.
  - D. Number and size of circuits for each sign to meet Federal Health Sign's requirement.
- Any deviation from the above recommendations may result in:
1. Damage to or improper operation of the sign(s).
  2. Delays and additional costs.

Notes: ⚠ Certain electrical components of signs will fail prematurely if signs are not shut-off for a period of time, once, each day. For best performance, we recommend signs to be connected to an automatic controlling device such as an Energy Management System, Time Clock or Photo Cell that will automatically shut-off the sign for a period of time, each day. Failure to do so will cause damage to the electrical components of the sign and will void the warranty.

⚠ Some dimming devices will also adversely affect sign electrical components, causing failure. Any dimming of the sign without consultation with Federal Health Sign Co. will void the warranty.

**INSTALLER IS RESPONSIBLE FOR:**

- ELECTRICAL NOTES:
1. INSTALLATION OF THESE (ELECTRICAL) SIGNS SHALL CONFORM TO THE REQUIREMENTS OF ARTICLE 600 OF THE N.E.C., U.L. 48 AND / OR OTHER APPLICABLE LOCAL CODES. THIS INCLUDES PROPER GROUNDING AND BONDING OF THE SIGN.
- PROVIDING ALL NEEDED INSTALLATION HARDWARE AS DETERMINED BY LOCAL CODE AND SITE CONDITIONS.

ELECTRICAL REQUIREMENTS	
Total:	T.B.D. Amps
# of 120V 20A Circuits Req'd T.B.D.	
ALL BRANCH CIRCUITS SHALL BE DEDICATED TO SIGNS INCLUDING GROUND AND NEUTRAL AND SHALL NOT BE SHARED WITH OTHER LOADS.	