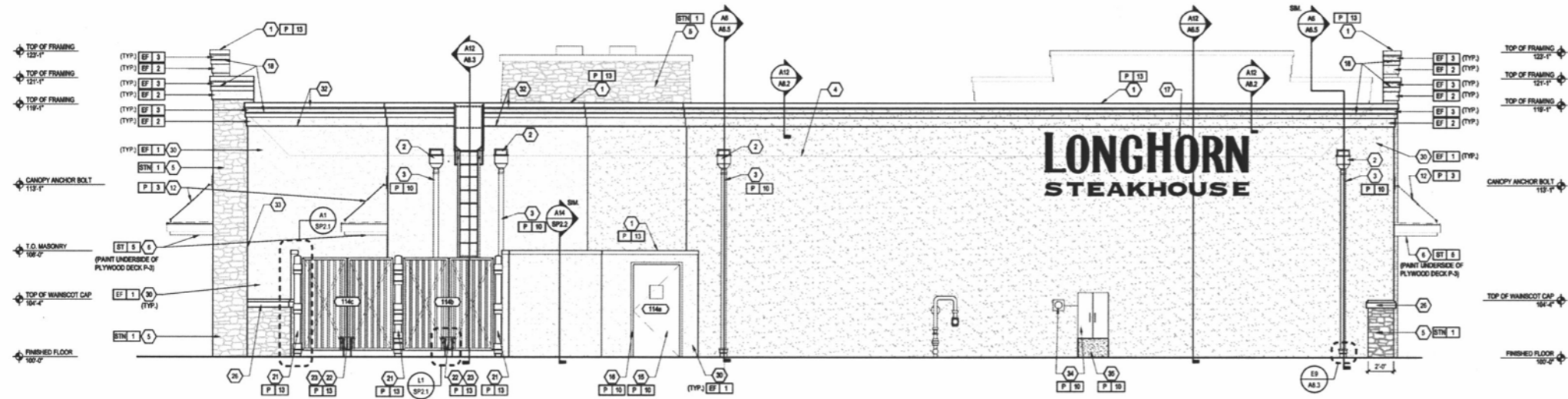
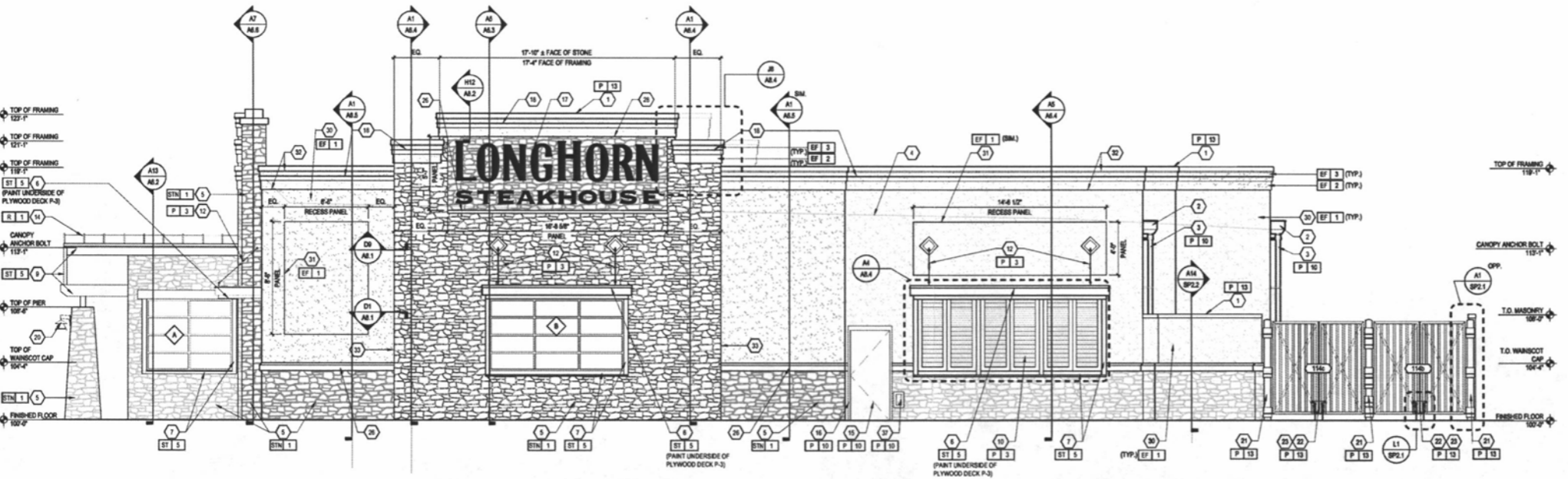


11PD010



H1 REAR ELEVATION
SCALE: 1/8" = 1'-0"



A1 RIGHT ELEVATION
SCALE: 1/8" = 1'-0"

KEY NOTES

1. METAL COPING, PART P-13, REFER TO DETAIL K15M4
2. ROOF SCUPPER w/ OVERFLOW, REFER TO DETAIL A8A3 PART 2 TO MATCH ADJACENT WALL FINISHES
3. METAL DOWNSPOUT, PART P-10
4. LINE OF ROOF, BEYOND
5. SIMULATED STONE VENEER
6. ROUGH-SAWN WOOD AWNING, STAIN ST-5
7. ROUGH-SAWN WOOD TRIM, STAIN ST-6, G.C. TO PROVIDE CAULK AND BACKER ROD AT JOINT BETWEEN GLULAM BEAM AND STONE
8. METAL BRACKET, PART P-3
9. GLULAM BEAM, REFER TO STRUCTURAL DRAWINGS FOR MORE INFORMATION, FINISH ST-4, G.C. TO PROVIDE CAULK AND BACKER ROD AT JOINT BETWEEN GLULAM BEAM AND STONE
10. PAINTED PVC LOUVERED SHUTTER, REFER TO E8A4
11. DECORATIVE STEER HORNS, FURNISHED BY OWNER, INSTALLED BY G.C.
12. TURNBUCKLE CANOPY SUPPORTS AND ESCUTCHEON PLATES, REFER TO STRUCTURAL FOR SIZE AND ANCHORING DETAILS, PART P-3
13. GALVANIZED METAL FLASHING
14. STANDING SEAM METAL ROOFING, GALVALUME FINISH, SEE SPEC SECTION 0710 FOR MORE INFORMATION.
15. METAL DOOR, REFER TO DOOR SCHEDULE SHEET A4.2
16. DOOR FRAME, REFER TO DOOR SCHEDULE SHEET A4.2
17. COORDINATE SIGN LOCATION AND SIZE WITH SIGN COMPANY, SIGN TO BE CENTERED WITH STONE PANEL, U.N.D.
18. SPECIALTY LIGHTING, BY SIGN VENDOR
19. STONE ADDRESS NUMBERS - CENTER ABOVE DOORS
20. LIGHT FIXTURE, SEE SHEET E4.1 FOR MORE INFORMATION
21. STEEL BRASS GATE POST, REFER TO A8P2.1
22. TRASH ENCLOSURE, REFER TO A8P2.2
23. TRASH ENCLOSURE GATE, REFER TO A8P2.1
24. NOT USED
25. NOT USED
26. CHISELED STONE SILL BY STONE VENDOR
27. NOT USED
28. RECESSED STONE SIGN PANEL
29. NOT USED
30. EIFS FINISH, STO COLOR NA5-0022 TO MATCH P-10 REFER TO E8A2 FOR MORE INFORMATION.
31. EIFS PANEL, STO COLOR NA5-0022 TO MATCH P-10 REFER TO E8A2 AND H8A2
32. EIFS CORNICE, REFER TO DETAILS A12 & D12 SHEET A12
33. EIFS EXPANSION JOINT - PACK JOINT WITH FOAM ROD, CAULK WITH SEALANT AS SPECIFIED BY STO.
34. ELECTRICAL METER AND C1 PANEL, REFER TO E8.1, PAINT TO MATCH ADJACENT WALL
35. CONCRETE CURB TO BOTTOM OF ELECTRICAL PANEL
36. ANCHOR ROD, COORDINATE LOCATION WITH AUTHORITY HAVING JURISDICTION.
37. HOSE PORT, SEE DETAIL E8A3 FOR MORE INFORMATION.

EXTERIOR FINISH LEGEND

PAINT	
P 3	TAR
P 10	CAPPUCINO MUFFIN
P 12	SOFT PUMPKIN
P 13	COUNTRY REDWOOD
P 15	HASBROOK BROWN
P 16	MARSH BROWN
STAIN	
ST 5	WALNUT STAIN
STONE	
STN 1	CORNADO STONE - OLD COUNTRY LEDGE
EIFS	
EF 1	NA5-0022 TO MATCH P-10
EF 2	NA5-0022 TO MATCH P-12
EF 3	NA5-0022 TO MATCH P-13
ROOF	
R 1	STANDING SEAM METAL ROOF, GALVALUME FINISH

F R C H
Design Worldwide
311 Elm Street Suite 600
Cincinnati, OH 45202
513.241.3000
www.frch.com

ARCHITECTS PROJECT #:
23804.000



Issue Date: 02.07.11

REVISION INFORMATION

NO.	DESCRIPTION
1	
2	
3	
4	
5	
6	
7	
8	

Restaurant #: 5406

LONGHORN
LH-7.5L
Prototype current thru - 01-04-2011
1510 & 1516 Eglin St.
Rapid City, SD 57703

AUTHORIZED FOR:
PERMIT / BID

RAPID CITY

Drawing
EXTERIOR
ELEVATIONS

A5.2



RECEIVED

FEB 21 2011

Rapid City Growth
Management Department



1510 Eglin Street
Rapid City, SD

Store #TBD

January 6, 2011 - Initial

**Developer Approval &
Possible Variance Required**



Ph: 1 . 800 . 599 . 7696
Fax: 1 . 574 . 237 . 6166
www.siteenhancementservices.com

REVISIONS:

- Rev 1: 02/08/11 - Page 16, Added Monument Spec Page from Sign Company _____
- Rev 2: _____
- Rev 3: _____
- Rev 4: _____

OEA restricts signage to one (1) per elevation, total of two (2) per site, not to exceed 2 SF per foot of lot frontage facing a public street. Raceways are not allowed. 95% chance of approval for this sign.

Developer Approval Required

Front Elevation

Store #TBD

SVI Rating: 3.75

Photo Reference: #1

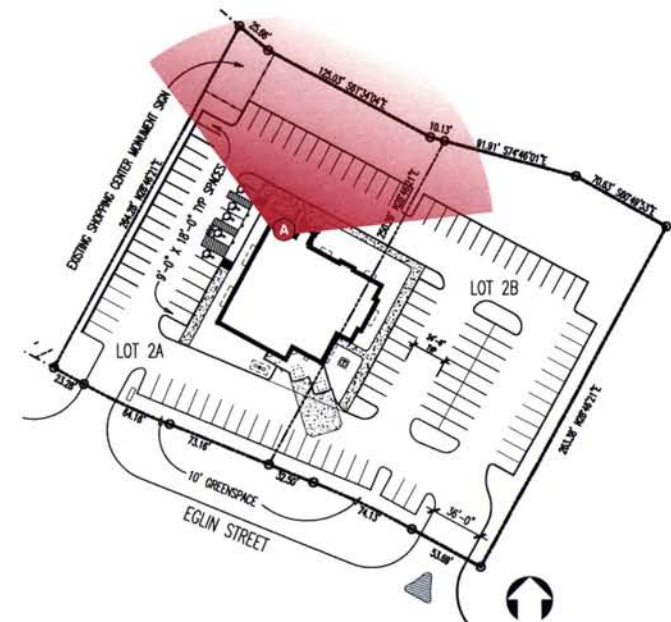


Measurements based on architectural plans provided.
Measurements to be field verified.
Red LED illuminated band to be mounted to cornice.

Scale: 1/16"=1'



36" Channel Letters (Internally Illuminated w/LED)
Utilized Square Footage: 68.9 | Allowed Square Footage: 641 total
Scale: 1/4"=1'



OEA restricts signage to one (1) per elevation, total of two (2) per site, not to exceed 2 SF per foot of lot frontage facing a public street. Raceways are not allowed. 55% chance of approval for this sign.

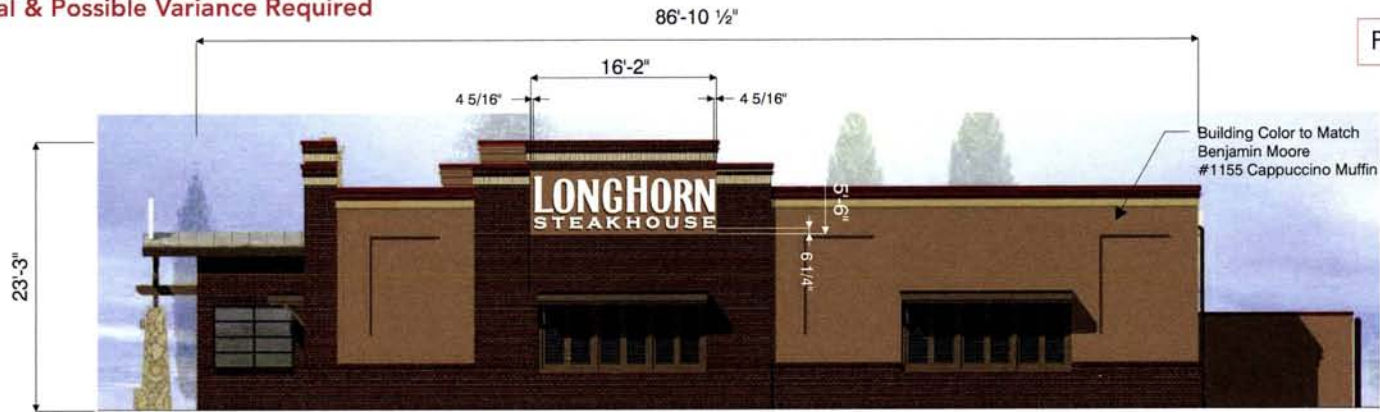
Right Elevation

Store #TBD

SVI Rating: 4.0

Photo Reference: #2

Developer Approval & Possible Variance Required

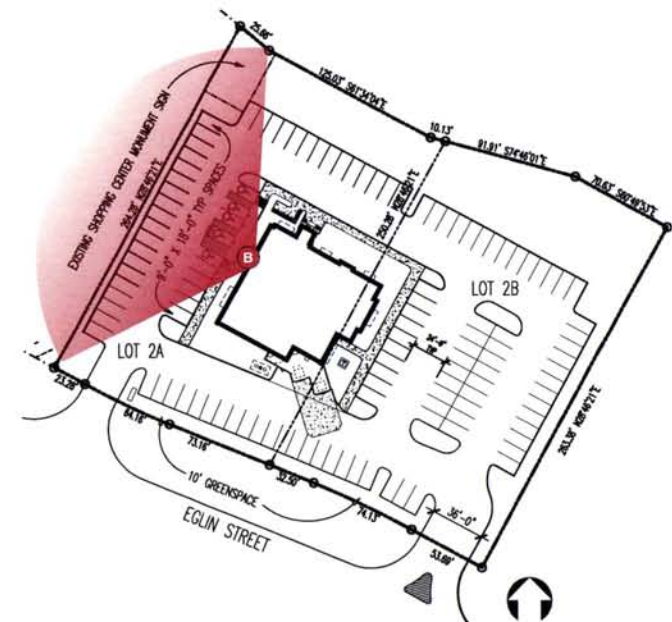


Measurements based on architectural plans provided. Measurements to be field verified. Red LED illuminated band to be mounted to cornice.

Scale: 1/16"=1'



36" Channel Letters (Internally Illuminated w/LED)
 Utilized Square Footage: 68.9 | Allowed Square Footage: 0
 Scale: 1/4"=1'



OEA restricts signage to one (1) per elevation, total of two (2) per site, not to exceed 2 SF per foot of lot frontage facing a public street. Raceways are not allowed. 45% chance of approval for this sign.

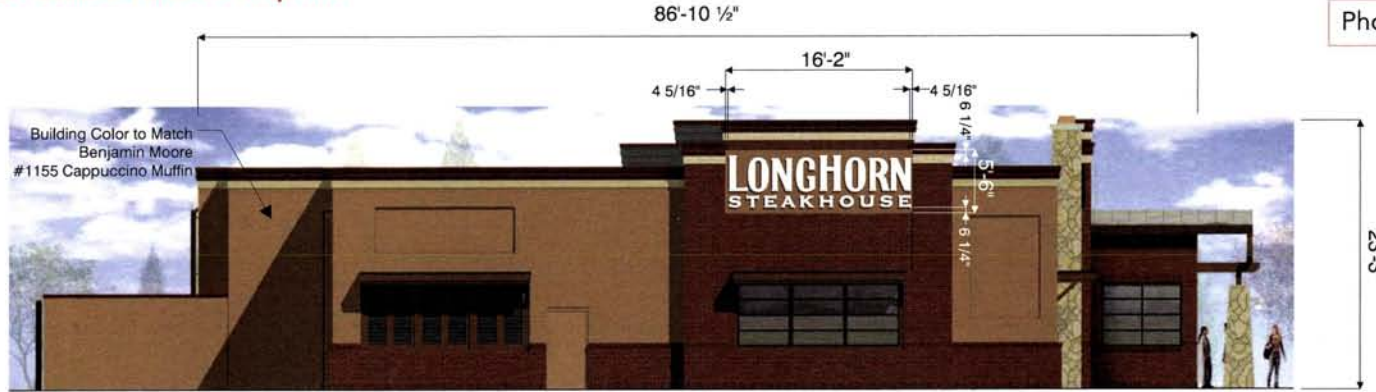
Left Elevation

Store #TBD

SVI Rating: 3.75

Photo Reference: #3

Developer Approval & Possible Variance Required

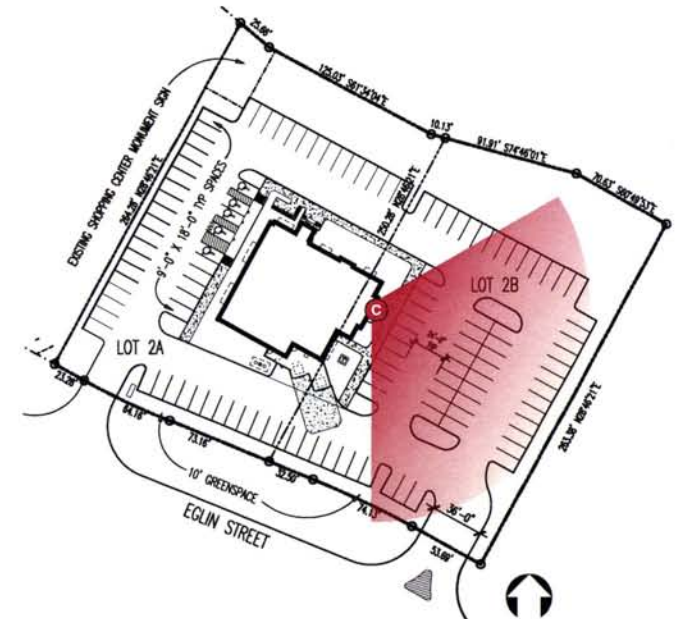


Measurements based on architectural plans provided. Measurements to be field verified.
Red LED illuminated band to be mounted to cornice.

Scale: 1/16"=1'



36" Channel Letters (Internally Illuminated w/LED)
Utilized Square Footage: 68.9 | Allowed Square Footage: 0
Scale: 1/4"=1'



OEA restricts signage to one (1) per elevation, total of two (2) per site, not to exceed 2 SF per foot of lot frontage facing a public street. Raceways are not allowed. 95% chance of approval for this sign.

Developer Approval Required

Rear Elevation

Store #TBD

SVI Rating: 4.25

Photo Reference: #4



Measurements based on architectural plans provided. Measurements to be field verified. Red LED illuminated band to be mounted to cornice.

Scale: 1/16"=1'



36" Channel Letters (Internally Illuminated w/LED)
 Utilized Square Footage: 68.9 | Allowed Square Footage: 641 total
 Scale: 1/4"=1'

