



**Wyss  
Associates,**

728 Sixth St. ▪ Rapid City, SD 57701 ▪ Ph: 605.348.2268 ▪ Fx: 605.348.6506 ▪ Email:  
[info@wyssassociates.com](mailto:info@wyssassociates.com) ▪ [www.wyssassociates.com](http://www.wyssassociates.com)

February 23, 2011

Mrs. Karen Bulman, Planner  
Rapid City Growth Management  
300 Sixth Street  
Rapid City, SD 57701-2724

**RE: Terra Sancta Spiritual Life Center and Elementary School CUP Minor Amendment – Landscaping**

This letter serves to supplement the application documentation provided on December 2<sup>nd</sup> and December 17<sup>th</sup> of 2010 on behalf of the ownership of Terra Sancta for the minor amendment to the conditional use permit.

Attached are the following items:

1. 11x17 copy of the original CUP Landscaping (L4.1) submittal drawing, dated June 9, 2010 – Title Block Reads: Terra Sancta Spiritual Life Center CUP Submittal
2. 11x17 Copy of the original Building Permit Landscaping (L4.1) submittal drawing, dated December 1, 2010 – Title Block Reads: Terra Sancta Overall Planting Plan.
3. 11x17 Copy of the Landscaping (L4.1) submittal drawing, dated February 24, 2011 – Title Block Reads: Terra Sancta Overall Planting Plan.

The following items were changed for the Building Permit from the original CUP submission:

- Large Deciduous Trees were decreased by 17 for a new total of 34
- Medium Deciduous Trees increased by 45 for a new total of 61
- Coniferous Trees have been decreased by 1 for a new total of 5

This submittal further changes the landscape:

- Large Deciduous Trees increased for a new total of 55
- Medium Deciduous Trees decreased for a new total 11
- Coniferous Trees decreased for a new total of 3
- Other numerous plan changes have been made, however, the minimum landscape points required are well exceeded even without utilizing existing campus landscape.

These changes are part of overall revisions to the scope of the exterior spaces due to budget constraints and ongoing design development. The plan submitted herein provides well over 60,000 points than required.

Please let me know if additional information/clarification is required. We look forward to working with you through the amendment process.

Respectfully,

Matt Fridell, Landscape Architect

Landscape Architecture

**RECEIVED**

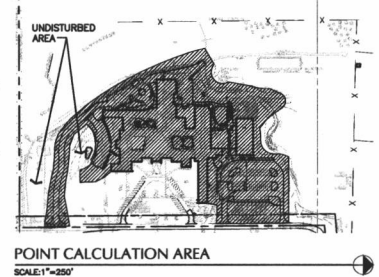
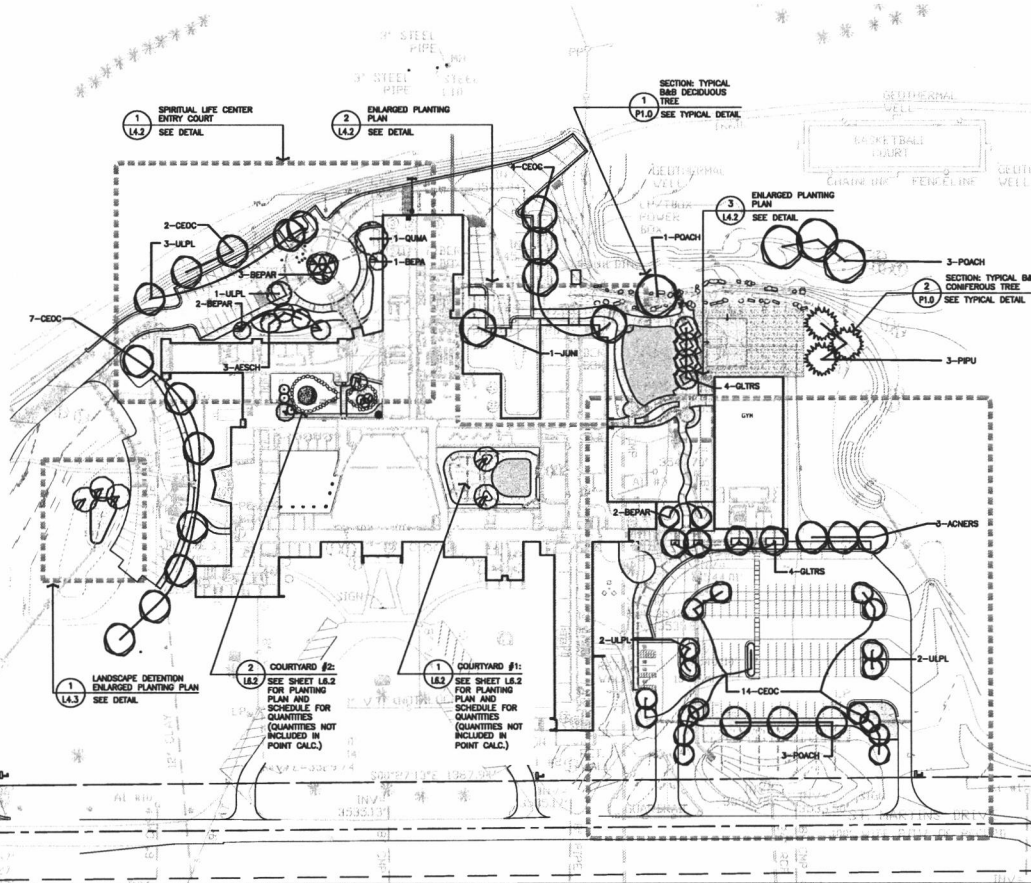
FEB 25 2011

**Rapid City Growth**

**Management Department**

GENERAL PLANTING NOTES

- CONTRACTOR SHALL LOCATE AND PROTECT ALL EXISTING UTILITIES. CONTRACTOR SHALL REPAIR OR REPLACE ANY DAMAGED UTILITIES AT NO COST TO OWNER.
- ALL PLANT MATERIAL SHALL CONFORM TO THE GUIDELINES ESTABLISHED BY THE CURRENT AMERICAN STANDARD FOR NURSERY STOCK, PUBLISHED BY THE AMERICAN ASSOCIATION OF NURSERYMEN OR EQUIVALENT.
- ALL TREE AND SHRUB LOCATIONS SHALL BE STAKED OR LAID OUT BY CONTRACTOR AND APPROVED BY PROJECT LANDSCAPE ARCHITECT.
- ALL PLANTS SHALL BEAR THE SAME RELATIONSHIP TO FINISHED GRADE AS THE PLANT'S ORIGINAL GRADE BEFORE DIGGING.
- ALL PLANTS AND STAKES SHALL BE SET PLUMB UNLESS OTHERWISE SPECIFIED.
- ALL PLANTS SHALL BE INSTALLED IN ACCORDANCE WITH ALL DRAWINGS AND SPECIFICATIONS.
- ALL SHRUB BEDS ARE TO RECEIVE MULCH AS SPECIFIED IN 'PLANTS' SECTION 329300 AND AS SHOWN ON SHEET LS.1 OVERALL TURFING PLAN.
- CONTRACTOR SHALL PROVIDE SOILS PER 'PLANTS' SECTION 329300 OF SPECIFICATIONS.
- PLANTING SEASONS SHALL BE FROM APRIL 15 TO JUNE 15 AND FROM SEPTEMBER 1 TO NOVEMBER 1, UNLESS OTHERWISE COORDINATED. EXCEPTIONS SHALL BE COORDINATED THROUGH THE LANDSCAPE ARCHITECT AND OWNER.
- CONTRACTOR IS RESPONSIBLE FOR MAINTAINING HEALTH OF ALL PLANT MATERIAL INCLUDING TREES, SHRUBS, PERENNIALS, TURF GRASSES, AND NATIVE GRASSES UNTIL FINAL ACCEPTANCE OF PROJECT AND MAINTENANCE PERIOD IS COMPLETE.
- CONIFEROUS PLANTS SHALL BE SPRAYED BY CONTRACTOR WITH AN ANTI-DESICCANT WITHIN 24 HOURS OF PLANTING AND AT THE BEGINNING OF THEIR FIRST WINTER.
- THE CONTRACTOR SHALL REFER TO THE CONTRACT SPECIFICATIONS AND PLANTING DETAILS FOR ADDITIONAL REQUIREMENTS.
- THE CONTRACTOR SHALL PROVIDE A ONE (1) YEAR WARRANTY FOR ALL PLANT MATERIAL UNLESS OTHERWISE INDICATED IN SPECIFICATIONS. REPLACEMENT PLANT MATERIAL IS SUBJECT TO THE SAME (1) YEAR WARRANTY.



- CITY OF RAPID CITY POINTS NOTES
- LANDSCAPE AREAS WITHIN THE POINT CALCULATION AREA SHALL BE FULLY IRRIGATED BY MAINTENANCE STAFF AND A FUTURE AUTOMATIC IRRIGATION SYSTEM COMPRISED OF DRIP, SUBSURFACE DRIP, AND MATCHED PRECIPITATION SPRAY COMPONENTS.
  - FIELDS AND UNIRRIGATED LAWN AREAS OUTSIDE THE PLANT CALCULATION AREA SHALL HAVE FUTURE QUICK COUPLER CONNECTIONS FOR INTERMITTENT WATERING, BUT ARE NOT INTENDED TO BE FULLY IRRIGATED.

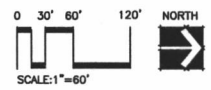
EXISTING UTILITIES LOCATIONS:  
 THE LOCATIONS OF EXISTING UNDERGROUND UTILITIES ARE SHOWN IN AN APPROXIMATE WAY ONLY AND HAVE NOT BEEN INDEPENDENTLY VERIFIED BY THE OWNERS OR ITS REPRESENTATIVE. THE CONTRACTOR SHALL DETERMINE THE EXACT LOCATION OF ALL EXISTING UTILITIES BEFORE COMMENCING WORK, AND AGREES TO BE FULLY RESPONSIBLE FOR ANY AND ALL DAMAGES WHICH MIGHT BE OCCASIONED BY THE CONTRACTOR'S FAILURE TO EXACTLY LOCATE AND PRESERVE ANY AND ALL UNDERGROUND UTILITIES. CONTACT THE SOUTH DAKOTA ONE CALL NOTIFICATION CENTER 2025 CENTRE POINTE BOULEVARD #310 MENDOTA HEIGHTS, MN 55120 1-800-781-7474

CITY OF RAPID CITY POINTS COMPLIANCE

DESCRIPTION	UNITS/POINTS GIVEN	TOTAL POINTS
DEVELOPED AREA	458,346 SQ. FT.	123,882 SQ. FT.
STRUCTURE SQUARE FOOTAGE		
LANDSCAPE POINTS REQUIRED		332,654 POINTS
TURF AREA	20,560 S.Y. @ 10 PTS / S.Y.	205,600 PTS.
LARGE DECIDUOUS TREES-SEE LEGEND (L)	55 @ 2000 PTS EA.	110,000 PTS.
MEDIUM DECIDUOUS TREES-SEE LEGEND (M)	11 @ 1000 PTS EA.	11,000 PTS.
SMALL DECIDUOUS TREES-SEE LEGEND (S)	0 @ 500 PTS EA.	0 PTS.
CONIFEROUS TREES	3 @ 2000 PTS EA.	6,000 PTS.
DECIDUOUS SHRUBS	91 @ 250 PTS EA.	22,750 PTS.
GROUNDCOVER	399 S.Y. @ 100 PTS/S.Y.	39,900 PTS.
POINTS PROVIDED		385,250 PTS.

TREE PLANTING SCHEDULE

QTY	SYMBOL	COMMON NAME	BOTANICAL NAME	SIZE	HEIGHT	COMMENTS	SIZE
<b>DECIDUOUS TREES</b>							
3	ACERS	RED SENSATION MAPLE	ACER NEGUNDO 'RED SENSATION'	1 1/2"-2" CAL.	10-12' HGT.	B&B, SPACE PER PLANS	L
3	AESCH	HOMESTEAD BUCKEYE	AESCULUS X 'HOMESTEAD'	1 1/2" CAL.	10-12' HGT.	B&B, SPACE PER PLANS	M
1	BEPA	HERITAGE RIVER BIRCH	BETULA NIGRA VAR. 'HERITAGE'	1 1/2" CAL.	10-12' HGT.	B&B, SPACE PER PLANS	M
7	BEPAR	RENAISSANCE REFLECTION PAPER BIRCH	BETULA PAPPYRIFERA 'RENCI'	1 1/2" CAL.	10-12' HGT.	B&B, SPACE PER PLANS	M
27	CEOC	COMMON HICKBERRY	CELTIS OCCIDENTALIS	1 1/2"-2" CAL.	10-12' HGT.	B&B, SPACE PER PLANS	L
8	QLTRS	SHADEMASTER @ HONEYLOCUST	GLEDITSIA TRICHANTHOS 'SHADEMASTER'	1 1/2"-2" CAL.	10-12' HGT.	B&B, SPACE PER PLANS	L
1	JUNI	BLACK WALNUT	JUGLANDS NIGRA	1 1/2"-2" CAL.	10-12' HGT.	B&B, SPACE PER PLANS	L
7	POACH	HIGHLAND COTTONWOOD	POPULUS ALCUMINATA X SARGENTII 'HIGHLAND'	1 1/2" CAL.	10-12' HGT.	B&B, SPACE PER PLANS	L
1	QUMA	BUR OAK	QUERCUS MACROCARPA	1 1/2" CAL.	10-12' HGT.	B&B, SPACE PER PLANS	L
8	ULPL	'VANGUARD' ELM	ULMUS 'PLAINSMAN'	1 1/2"-2" CAL.	10-12' HGT.	B&B, SPACE PER PLANS	L
<b>CONIFEROUS TREES</b>							
3	PPU	BLACK HILLS SPRUCE	PICEA PLUMBENS 'BLACK HILLS'	3-4" SPREAD	5' HGT.	B&B	L



ARCHITECT:  
**ARC HITECTURE INTERNATIONAL**  
 1800 WARD ROAD • RAPID CITY, SD 57702  
 PHONE: (605) 348-7405 • FAX: (605) 348-6405  
 www.arcarchitecture.com

STRUCTURAL ENGINEER:  
 3202 West Main  
 Suite C  
 Rapid City, South Dakota 57702  
 (605) 341-5605  
**Albertson Engineering Inc.**

MECHANICAL/ELECTRICAL ENGINEER:  
**WPE**  
 1100 WARD ROAD • RAPID CITY, SD 57702  
 PHONE: (605) 348-7405 • FAX: (605) 348-6405  
 www.wpeinc.com

LANDSCAPE ARCHITECT:  
**Wysse Associates, Inc.**  
 1800 WARD ROAD • RAPID CITY, SD 57702  
 PHONE: (605) 348-7405 • FAX: (605) 348-6405  
 www.wysseinc.com

CIVIL ENGINEER:  
**F M G, Inc.**  
 Consulting Civil Engineers  
 8700 Broadway Blvd.  
 Rapid City, SD 57702-0317  
 (605) 348-1108 FAX: (605) 348-0222  
 www.fmgengineering.com

FOOD SERVICE CONSULTANT:  
**ROGER KRUSE ASSOC.**  
 food facilities planning  
 Omaha, NE

DATE: FEBRUARY 16, 2011

PROJECT MANAGER: MATTHEW D. FRIDELL

PROJECT NUMBER: 2007-026

**TERRA SANCTA SPIRITUAL LIFE CENTER**  
 RAPID CITY, SOUTH DAKOTA

OVERALL PLANTING PLAN

**L4.1**