

CIVIL SITE LEGEND

	SIDEWALK SURFACING SEE LANDSCAPE PLANS
	STORM INLET OR MANHOLE
	PROPOSED CONTOUR

ARCHITECT
ARC HITECTURE INTERNATIONAL
 3202 West Main
 Suite C
 Rapid City, South Dakota 57702
 605.343.9606
 www.arc-hi.com
 BENDING ARCHITECTURE TO YOUR WORLD

STRUCTURAL ENGINEER:
 3202 West Main
 Suite C
 Rapid City, South Dakota 57702
 605.343.9606
Albertson Engineering Inc.
 CONTACT:

MECHANICAL/ELECTRICAL ENGINEER:
WPE
 WEST PACE ENGINEERING
 1190 RAND ROAD • RAPID CITY, SD 57701
 PHONE: (605) 342-7444 • FAX: (605) 342-9445
 www.westpace.com
 WPE/OTL/BE • BOSS/FACILE/BE • SHAFER/BE • SHAFER/OTL/BE

LANDSCAPE ARCHITECT:
Wys Associates, Inc.
 728 South Street
 Rapid City, South Dakota 57701
 PHONE: (605) 342-2222 FAX: (605) 342-6205
 www.wysassociates.com
 Landscape Architecture • Land Planning
 Golf Course Architecture

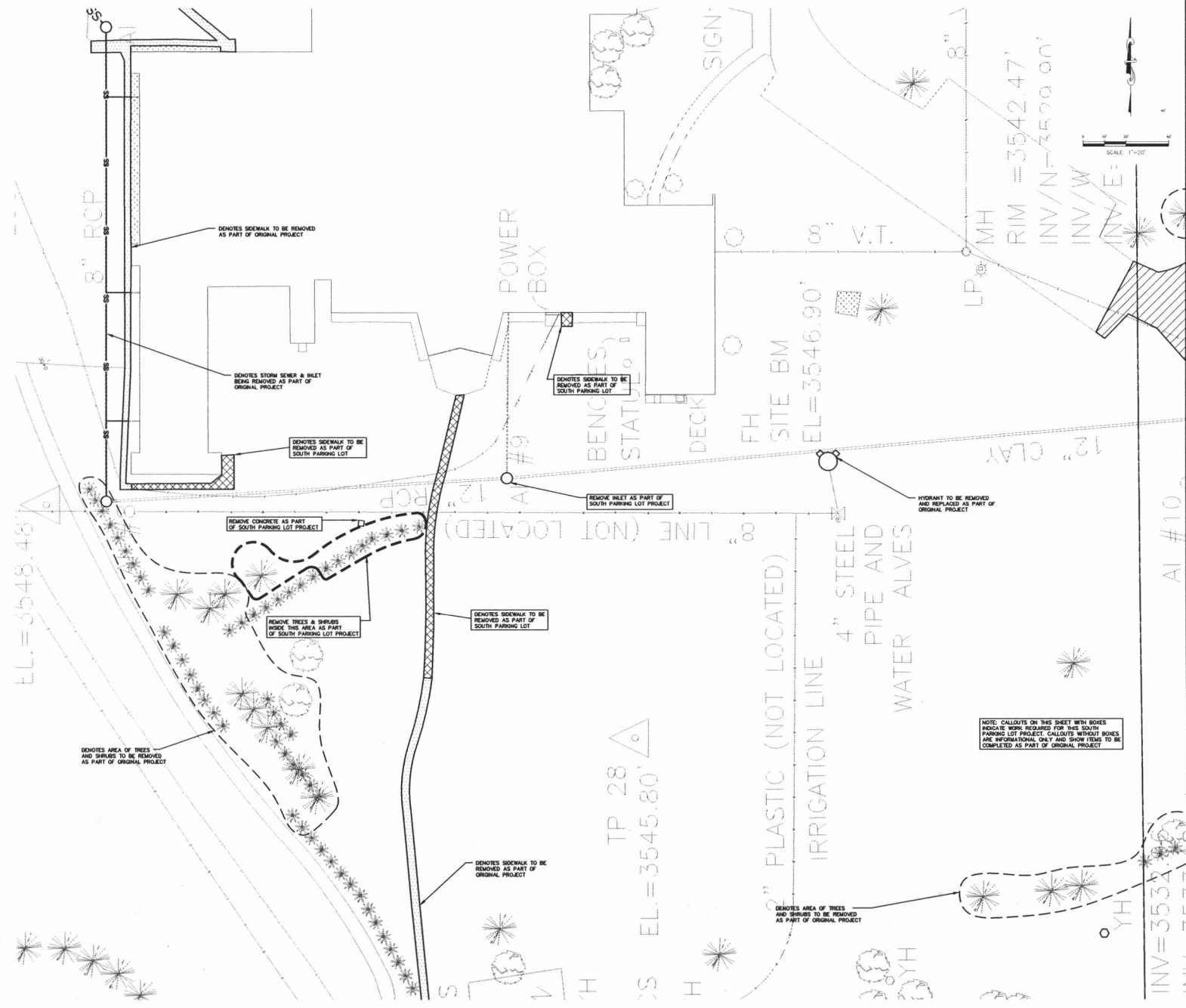
CIVIL ENGINEER:
F M G, Inc.
 Consulting Civil Engineers
 3700 8th Avenue Road
 Rapid City, SD 57708-0317
 (605) 342-4108 FAX (605) 342-4222
 www.fmgengineering.com

DATE: FEBRUARY 24, 2011
 PROJECT MANAGER: KELLI TREBL
 PROJECT NUMBER: 2007-026



TERRA SANCTA MAJOR AMENDMENT TO CONDITIONAL USE PERMIT
 RAPID CITY, SOUTH DAKOTA
SOUTH PARKING LOT LAYOUT PLAN

C-SP3
 (4 SHEETS TOTAL)



ARCHITECT
ARCHITECTURE
 INTERNATIONAL
808 BIRCHDALE RD. RAPID CITY, SOUTH DAKOTA 57702
 605.343.9600
 BRINGING ARCHITECTURE TO YOUR WORLD

STRUCTURAL ENGINEER:
 3202 West Main
 Suite C
 Rapid City, South Dakota 57702
 605.343.9606
Albertson Engineering Inc.
 CONTACT:

MECHANICAL/ELECTRICAL ENGINEER:
WPE PART
1780 RAND ROAD • RAPID CITY, SD 57702
 PHONE: (605) 348-7425 • FAX: (605) 348-9445
 WWW.WPEENGINEERING.COM
 CONTACT: CONTACT

LANDSCAPE ARCHITECT:
Wyss Associates, Inc.
728 South Street
 Rapid City, South Dakota 57701
 PHONE: 605.348.2288 • FAX: 605.348.6506
 LANDSCAPE ARCHITECTS • LEED PRACTICE
 LEED GREEN BUILDING

CIVIL ENGINEER:
F M G, Inc.
Consulting Civil Engineers
 3700 Shurgis Road
 Rapid City, SD 57705-5017
 (605) 342-4108 FAX (605) 342-4222
 www.fmgengineering.com

DATE: FEBRUARY 24, 2011

PROJECT MANAGER: KELLI TREBIL

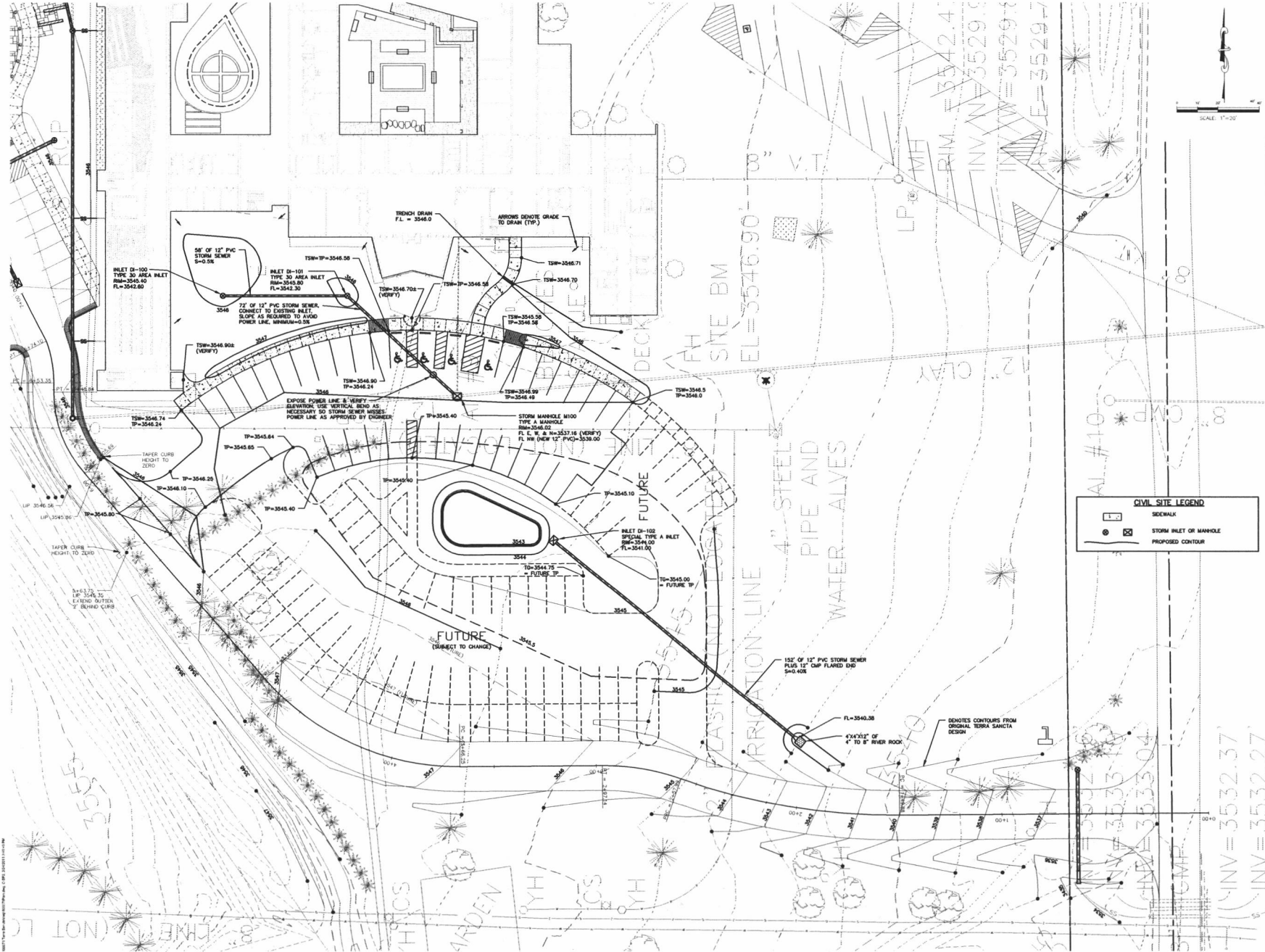
PROJECT NUMBER: 2007-026

**TERRA SANCTA
 MAJOR AMENDMENT
 TO CONDITIONAL
 USE PERMIT**
 RAPID CITY, SOUTH DAKOTA

**SOUTH PARKING LOT
 DEMOLITION PLAN**

C-SP1
 (4 SHEETS TOTAL)

10UR039.Terr Sancta Major Amendment to Conditional Use Permit - C-SP1 - 2/24/11 11:34 AM



CIVIL SITE LEGEND	
	SIWALK
	STORM INLET OR MANHOLE
	PROPOSED CONTOUR

ARCHITECT

ARCHITECTURE INTERNATIONAL
3100 WEST 10TH STREET SUITE 200 RAPID CITY SD 57702 TEL: 605.343.3300 FAX: 605.343.3605
BRANDING ARCHITECTURE TO YOUR WORLD

STRUCTURAL ENGINEER:
Albertson Engineering Inc.
3202 West Main Suite C Rapid City, South Dakota 57702 605.343.9600
 CONTACT:

MECHANICAL/ELECTRICAL ENGINEER:
WPE
1750 BRAND ROAD • RAPID CITY, SD 57702 PHONE: (605) 348-7600 • FAX: (605) 348-6445 www.wpe-engineers.com
 CONTACT: CONTACT

LANDSCAPE ARCHITECT:
Wyss Associates, Inc.
728 5th Street Rapid City, South Dakota 57701 PHONE: 605.348.2268 • FAX: 605.348.5506
www.wyssa.com
 CONTACT: CONTACT

CIVIL ENGINEER:
F M G, Inc.
3700 Banglia Road Rapid City, SD 57705-0317 (605) 342-4105 FAX (605) 342-4222 www.fmgengineering.com
 CONTACT: CONTACT

DATE: FEBRUARY 24, 2011

PROJECT MANAGER: KELLI TREBEL

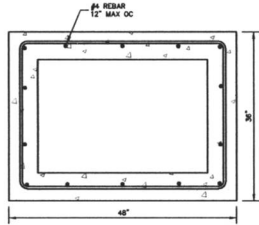
PROJECT NUMBER: 2007-026

REGISTERED PROFESSIONAL ENGINEER
 STATE OF SOUTH DAKOTA
 JERRY D. FOSTER
 2/24/11

TERRA SANCTA MAJOR AMENDMENT TO CONDITIONAL USE PERMIT
 RAPID CITY, SOUTH DAKOTA

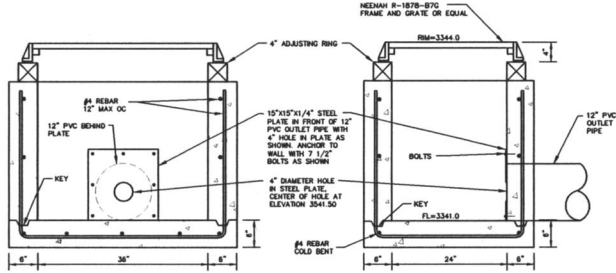
SOUTH PARKING LOT GRADING PLAN

C-SP2
 (4 SHEETS TOTAL)



TOP VIEW

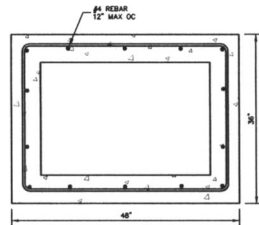
CONSTRUCT INLET IN ACCORDANCE WITH CITY OF RAPID CITY SPECIFICATIONS FOR PUBLIC WORKS CONSTRUCTION



FRONT VIEW

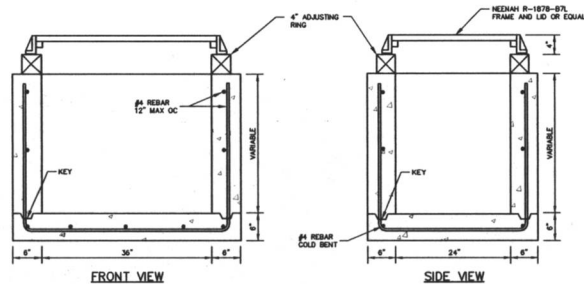
SIDE VIEW

SPECIAL TYPE "A" INLET
NOT TO SCALE



TOP VIEW

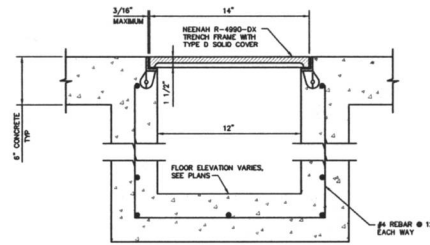
CONSTRUCT INLET IN ACCORDANCE WITH CITY OF RAPID CITY SPECIFICATIONS FOR PUBLIC WORKS CONSTRUCTION



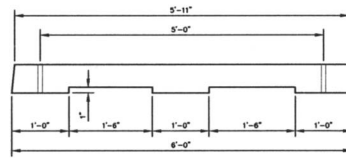
FRONT VIEW

SIDE VIEW

TYPE "A" MANHOLE
NOT TO SCALE

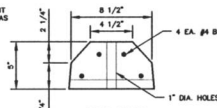


TRENCH DRAIN
NOT TO SCALE



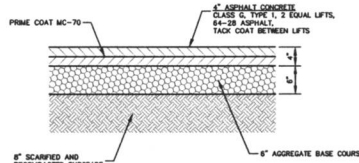
SIDE VIEW

NOTE: ANCHOR TO PAVEMENT WITH DRIVEN REBAR AS APPROVED

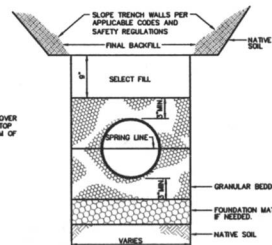


END VIEW

PRECAST PARKING CURB
NOT TO SCALE

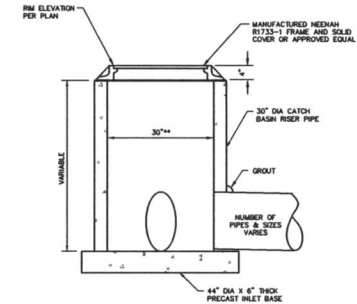


ASPHALT PAVEMENT SECTION
NOT TO SCALE



NOTE: 2" MINIMUM COVER REQUIRED BETWEEN TOP OF PIPE AND BOTTOM OF ASPHALT PAVEMENT

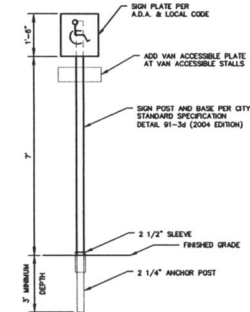
PVC STORM SEWER TRENCH DETAIL
NOT TO SCALE



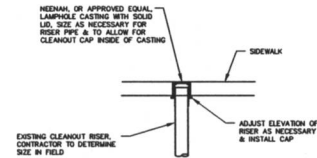
** SUPPLIER TO VERIFY MANHOLE DIAMETER IS ADEQUATE FOR PROPOSED INSTALLATION & INCREASE SIZE IF NECESSARY AT NO EXTRA COST.

INLET TO BE PER ORETEX CONCRETE PRODUCTS. BEST SMALL INLET DETAIL OR APPROVED EQUAL.

TYPE 30 STORM MANHOLE
NOT TO SCALE



HANDICAP SIGN - LAWN AREA
NOT TO SCALE



STORM SEWER CLEANOUT CASTING DETAIL
NOT TO SCALE

ARCHITECT

ARC HITECTURE
INTERNATIONAL

2500 FEDERAL HWY. #111 • 445-4125 • 1000
RAPID CITY, SOUTH DAKOTA 57702 • TEL: 605.343.3263 • FAX: 605.343.3243

BUILDING ARCHITECTURE TO YOUR WORLD

STRUCTURAL ENGINEER:

3202 West Main
Suite C
Rapid City, South Dakota 57702
605.343.9600

Albertson Engineering Inc.

CONTACT:

MECHANICAL/ELECTRICAL ENGINEER:

WPE ENERGY
PLUMBING
MECHANICAL/ELECTRICAL

1780 HAWK ROAD • RAPID CITY, SD 57702
PHONE: (605) 348-7435 • FAX: (605) 348-9445
WWW.WPEENERGYMECHANICAL.COM

CONTACT: CONTACT

LANDSCAPE ARCHITECT:

WYSS ASSOCIATES, INC.
726 Sixth Street
Rapid City, South Dakota 57701
PHONE: 605.348.2248 • FAX: 605.348.5500
LANDSCAPE ARCHITECTURE • LAND PLANNING • GOLF COURSE ARCHITECTURE

CIVIL ENGINEER:

F M G, Inc.
Consulting Civil Engineers

3700 Shurgle Road
Rapid City, SD 57708-0817
(605) 342-4108 FAX: (605) 342-4222
www.fmgengineering.com

DATE: FEBRUARY 24, 2011

PROJECT MANAGER: KELLI TREBL

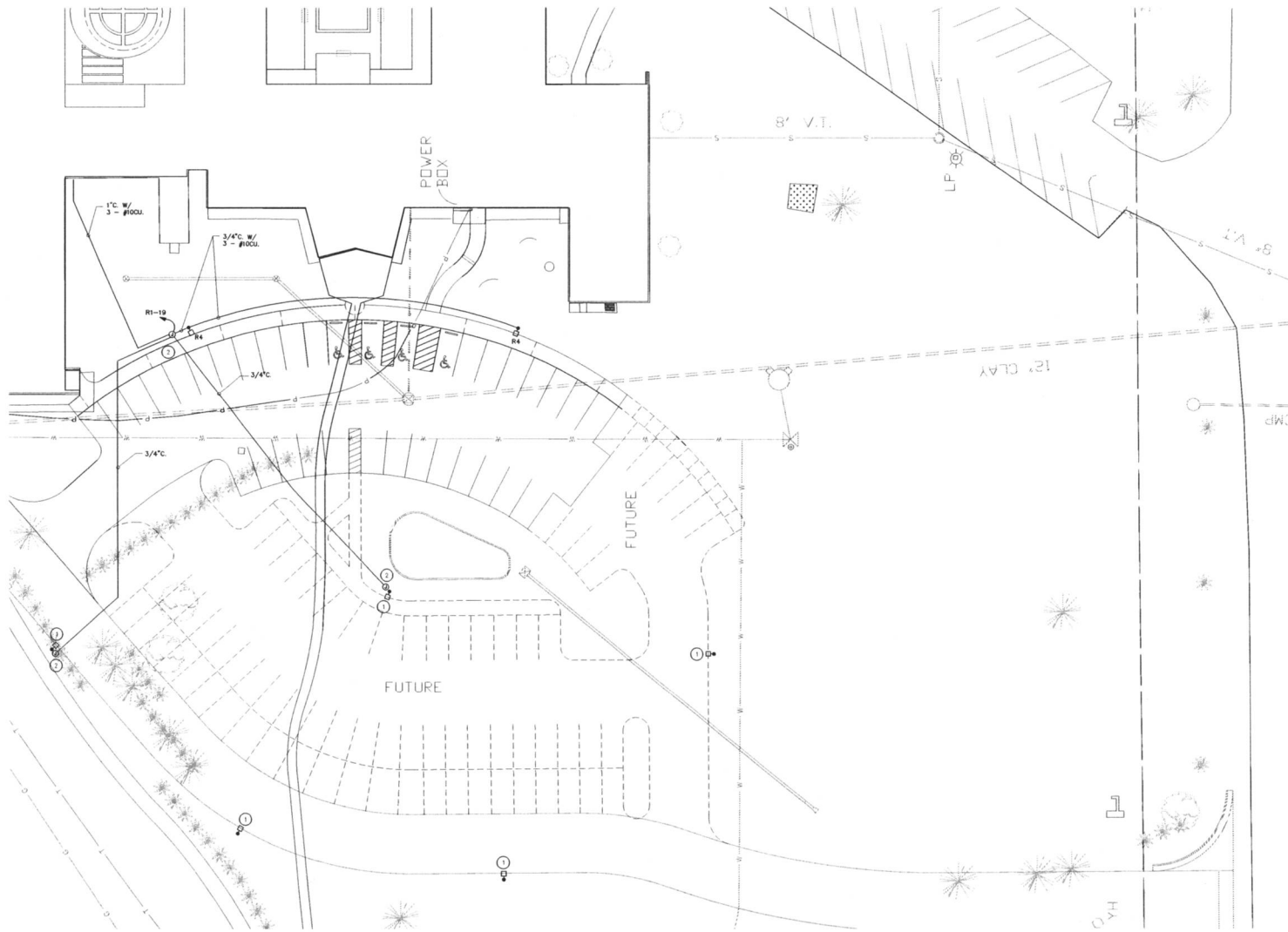
PROJECT NUMBER: 2007-026

REGISTERED PROFESSIONAL ENGINEER
STATE OF SOUTH DAKOTA
JERRY D. FORBES
2/24/11

TERRA SANCTA
MAJOR AMENDMENT
TO CONDITIONAL
USE PERMIT
RAPID CITY, SOUTH DAKOTA

SOUTH PARKING LOT
DETAILS

C-SP4
(4 SHEETS TOTAL)



1 SOUTH PARKING LOT LIGHTING PLAN
E0.02 1'-20"=1'

FITZ	TYPE	MANUFACTURER'S DESIGNATION	FITTING DATA		LAMP DATA				SHARDS	ADDITIONAL MANUFACTURER'S MODEL
			CATALOG NUMBER	HOUSING TYPE	NO	WATTS	CATALOG NUMBER	REMARKS		
PA	LED	INDUSTRIAL	FIXTURE: CLEAR 77-250-PRND-F-102-100-100	POLE	1	250	100	SAKROB	SAKROB POLE FIXTURE	LETRONIA/COLUMBIA

- SPECIFIC ELECTRICAL NOTES
1. FUTURE LIGHT POLE LOCATION.
 2. PROVIDE GRADE #G1118B412 IN-GRADE BOX WITH #G1118C40029F COVER.

ARC HITECTURE INTERNATIONAL
INTERNATIONAL
BRINGING ARCHITECTURE TO YOUR WORLD

STRUCTURAL ENGINEER:
 3202 West Main
 Suite C
 Rapid City, South Dakota 57702
 605.343.9606
 Albertson Engineering Inc.

MECHANICAL/ELECTRICAL ENGINEER:
WPE
 1785 RAND ROAD • RAPID CITY, SD 57702
 PHONE: (605) 348-2288 • FAX: (605) 348-0445
 WWW.WPEENGINEERING.COM

LANDSCAPE ARCHITECT:
Wysys Associates, Inc.
 728 Sixth Street
 Rapid City, South Dakota 57701
 PHONE: (605) 348-2288 • FAX: (605) 348-2206
 LANDSCAPE ARCHITECTURE • CIVIL PLANNING • GOLF COURSE ARCHITECTURE

CIVIL ENGINEER:
FMG, Inc.
 Consulting Civil Engineers
 2700 Shuglin Road
 Rapid City, SD 57702-0217
 (605) 342-4108 FAX (605) 342-4222
 www.fmgengineering.com

DATE: FEBRUARY 24, 2011

PROJECT MANAGER: WPE - DOUG FETTEL

PROJECT NUMBER: WPE #R09034

**TERRA SANCTA
 MAJOR AMENDMENT
 TO CONDITIONAL
 USE PERMIT**
 RAPID CITY, SOUTH DAKOTA

**SOUTH PARKING LOT
 LIGHTING PLAN**

E0.02

