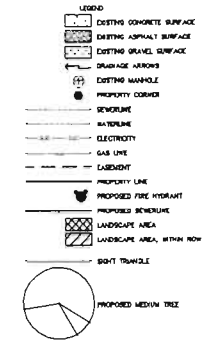


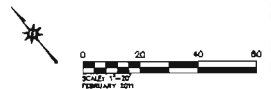
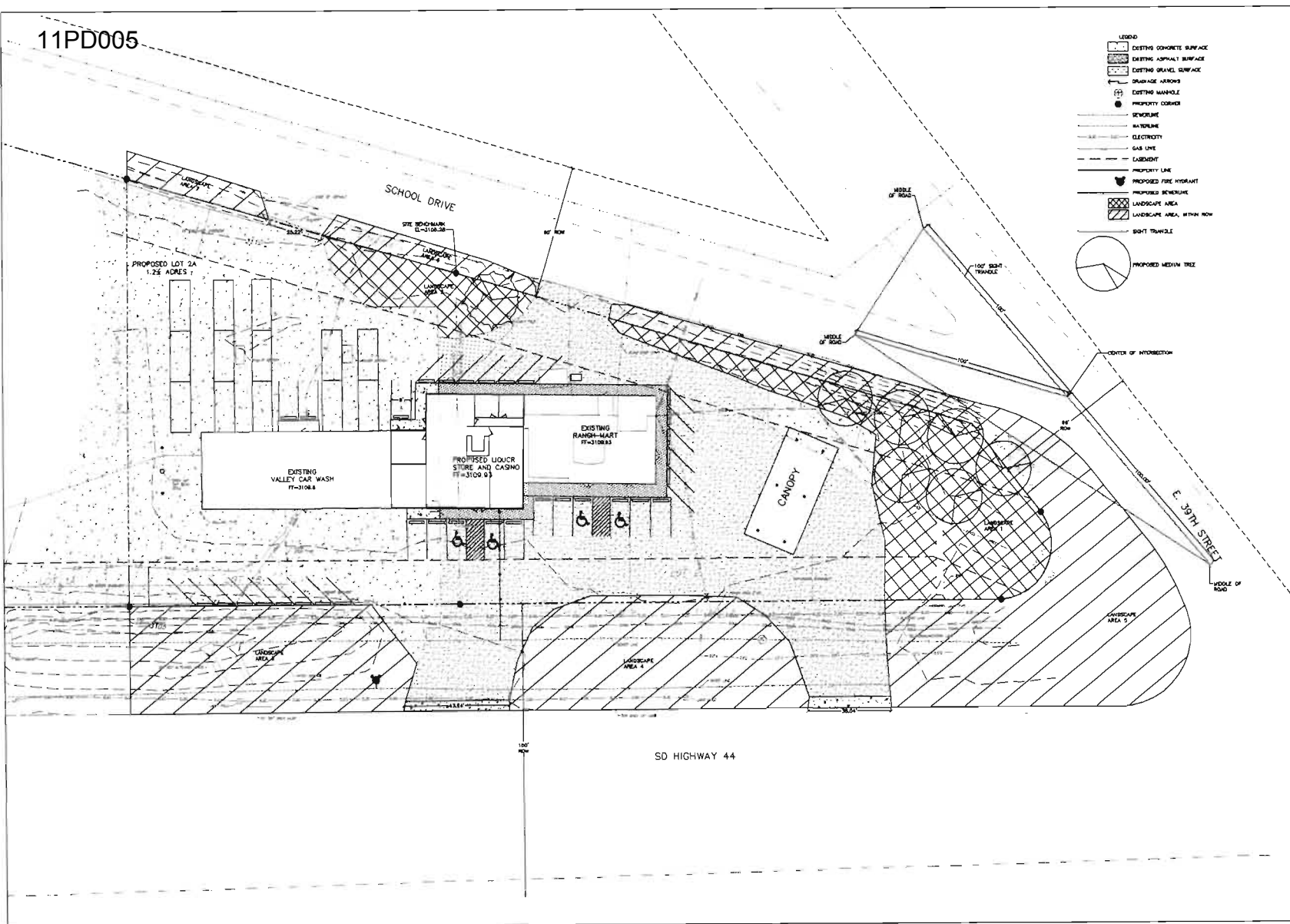
11PD005

LANDSCAPE NOTES

TOTAL LOT AREA	= 54,323 SF
TOTAL BUILDING AREA	= 8,267.34 SF
TOTAL LANDSCAPE POINTS REQUIRED	= 48,055.66
TOTAL LANDSCAPE POINTS	
AREA 1 = 8848.0 SF	POINTS PROVIDED
AREA 2 = 10848.0 SF	POINTS PROVIDED
AREA 3 = 5874.0 SF	POINTS PROVIDED
AREA 4 = 8028.8 SF	POINTS PROVIDED
AREA 5 = 11,388.4 SF	POINTS PROVIDED
AREA 6 = 828.7 SF	POINTS PROVIDED
AREA 7 = 708.4 SF	POINTS PROVIDED



RECEIVED
 FEB 28 2011
 Rapid City Growth
 Management Department



SURVEY:	DESIGN:	AMS
DATE:	CHECK:	AMS
DRAW:	DATE:	

511 NATIONAL STREET, SUITE 101
 BELLE FOURCHE, SD 57717
 PHONE (605) 892-2051
 FAX (605) 723-2051
 www.schreier-engineering.com

REV #	DESCRIPTION	CHKD	DATE

SHEET TITLE:	LANDSCAPE PLAN
PROJECT:	RANCHMART LIQUOR STORE ADDITION RAPID CITY, SOUTH DAKOTA

SHEET	2 OF 2
PROJECT NO.	574