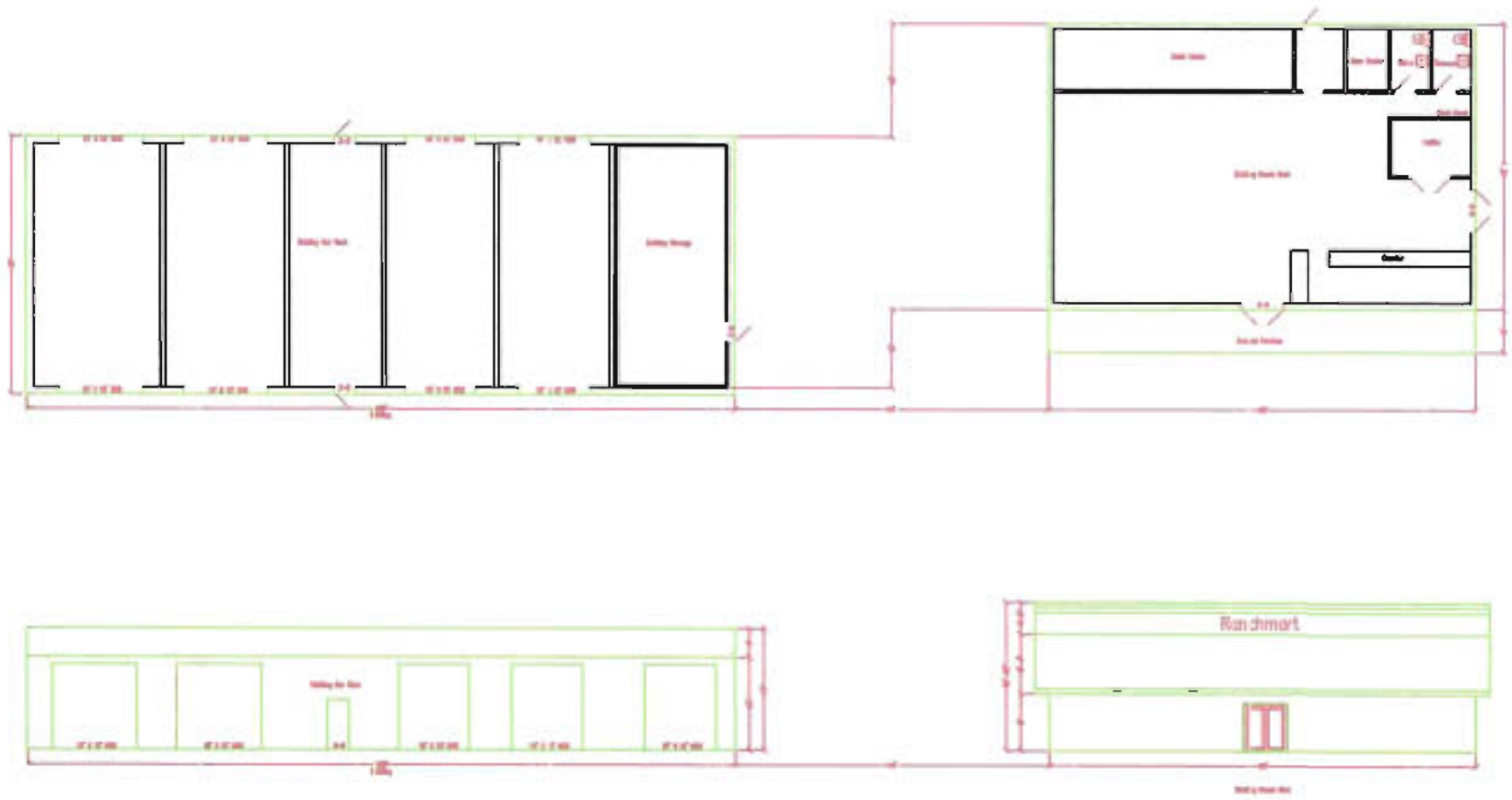


RECEIVED

JAN 27 2011

Rapid City Growth Management Department



Existing Structure
1/1" = 1'

Contractor / Developer: Inland North Surveying and Design Rapid Valley Ranchmart Convenience Store 2020 E. Hwy. 44 Rapid City SD Lot 20 of Rapid Valley 2, 7th Located in the E 113 St. Section 4, 1st ME, 5th, Pennington County SD
Ted Conner Construction—General Contractor 1221 South St. Rapid City SD 57701 605-342-2000

