



CAMBRIA SUITES

BY CHOICE HOTELS

CAMBRIA SUITES Signage Manual Generation 1.4

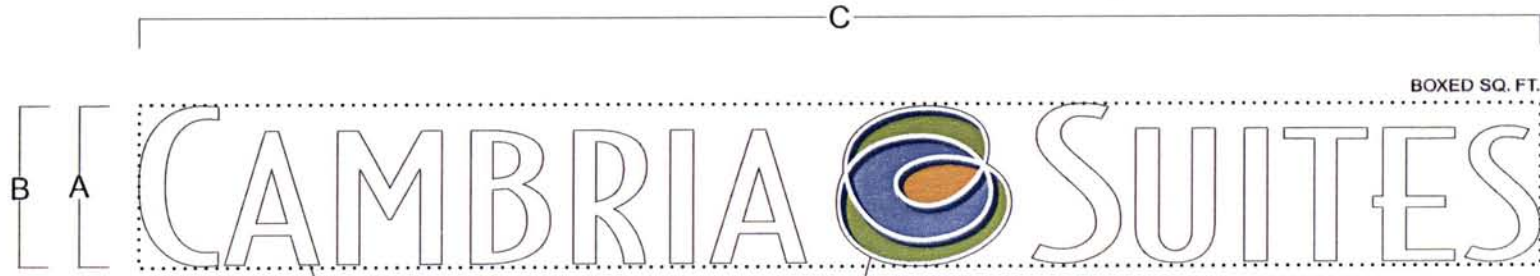


RECEIVED

AUG 18 2010

Rapid City Growth
Management Department

10PD052



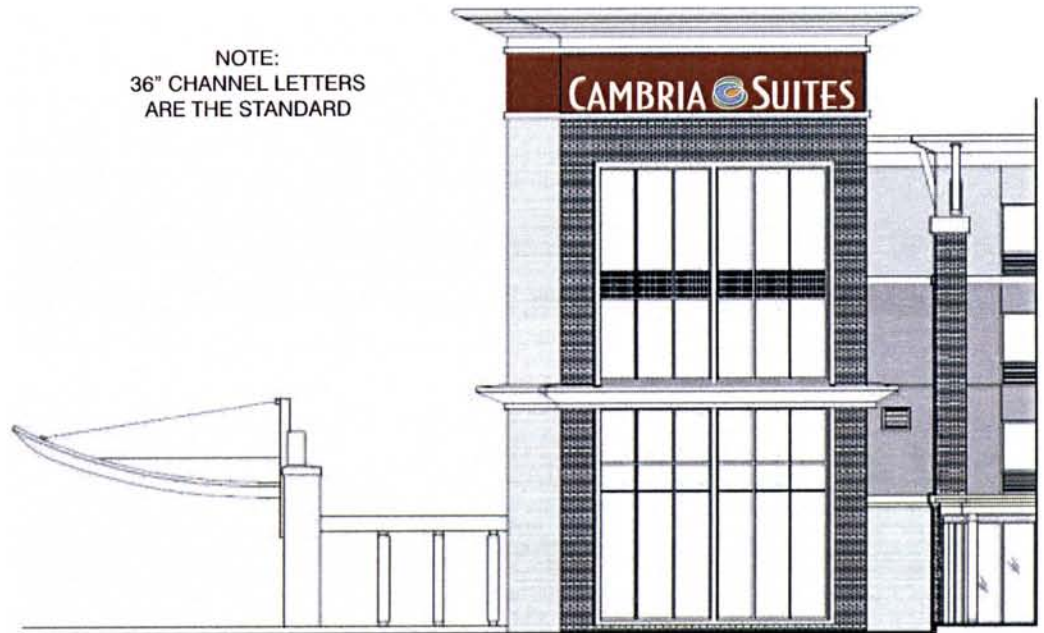
3/16" #7328 WHITE ACRYLIC FACES

- 3/16" #7328 WHITE ACRYLIC W/ 1ST SURFACE VINYL DECORATION:
- ARLON #3009 (2-LAYERS) BLUE - LOGO DROP SHADOWS
 - ARLON #3008 LIME GREEN - TOP & BOTTOM LOGO CENTERS
 - ARLON #3039 LIGHT BLUE - MIDDLE LOGO CENTER
 - ARLON #3040 ORANGE - LOGO CENTER
 - WHITE - LOGO OUTLINE

CAMBRIA SUITES IN-LINE LED INTERNAL CHANNEL LETTERS WITH LOGO					
LETTER HEIGHT "C"	LOGO HEIGHT	OVERALL LENGTH	AMP LOAD	BOXED SQUARE FOOTAGE	ACTUAL SQUARE FOOTAGE
A	B	C			
36"	36"	25'-9 11/16"	5.86	78.49	30.36

NOTE:
36" CHANNEL LETTERS
ARE THE STANDARD

CAMBRIA SUITES IN-LINE LED REMOTE CHANNEL LETTERS WITH LOGO					
LETTER HEIGHT "C"	LOGO HEIGHT	OVERALL LENGTH	AMP LOAD	BOXED SQUARE FOOTAGE	ACTUAL SQUARE FOOTAGE
A	B	C			
36"	36"	25'-9 11/16"	4.25	78.49	30.36



Customer: CAMBRIA SUITES	Date: 9-9-09	Prepared By: MR/CM	Note: Color output may not be exact when viewing or printing this drawing. All colors used are PMS or the closest CMYK equivalent. If these colors are incorrect, please provide the correct PMS match and a revision to this drawing will be made.
Location: VARIOUS	File Name: CAMBRIA SIGNAGE MANUAL - R5	Eng: X	



DISTRIBUTED BY SIGN UP COMPANY
700 21st STREET SOUTHWEST
PO BOX 210
WATERTOWN, SD 57201-0210

10PD052

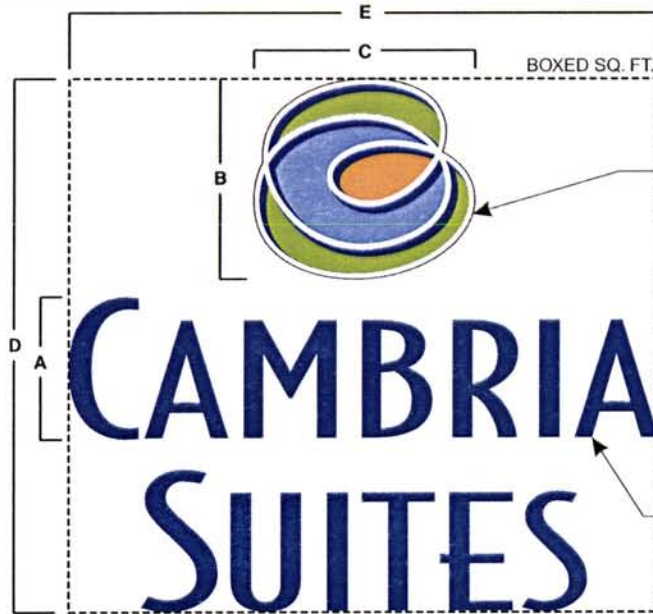
CAMBRIA SUITES STACKED LED INTERNAL CHANNEL LETTERS WITH LOGOS

LETTER HEIGHT ""	LOGO HEIGHT	LOGO LENGTH	OVERALL HEIGHT	OVERALL LENGTH	AMP LOAD	BOXED SQUARE FOOTAGE	ACTUAL SQUARE FOOTAGE
A	B	C	D	E			
18"	2-1 3/8"	2-3 5/8"	5-7 3/8"	6-1 13/16"	4.48	34.54	9.53
24"	2-9 7/8"	3-0 7/8"	7-5 13/16"	8-2 7/16"	5.33	61.41	16.94

LETTERS ARE BLUE DURING THE DAY & LIGHT WHITE AT NIGHT

CAMBRIA SUITES STACKED REMOTE LED CHANNEL LETTERS WITH LOGOS

LETTER HEIGHT ""	LOGO HEIGHT	LOGO LENGTH	OVERALL HEIGHT	OVERALL LENGTH	AMP LOAD	BOXED SQUARE FOOTAGE	ACTUAL SQUARE FOOTAGE
A	B	C	D	E			
18"	2-1 3/8"	2-3 5/8"	5-7 3/8"	6-1 13/16"	4.48	34.54	9.53
24"	2-9 7/8"	3-0 7/8"	7-5 13/16"	8-2 7/16"	5.33	61.41	16.94



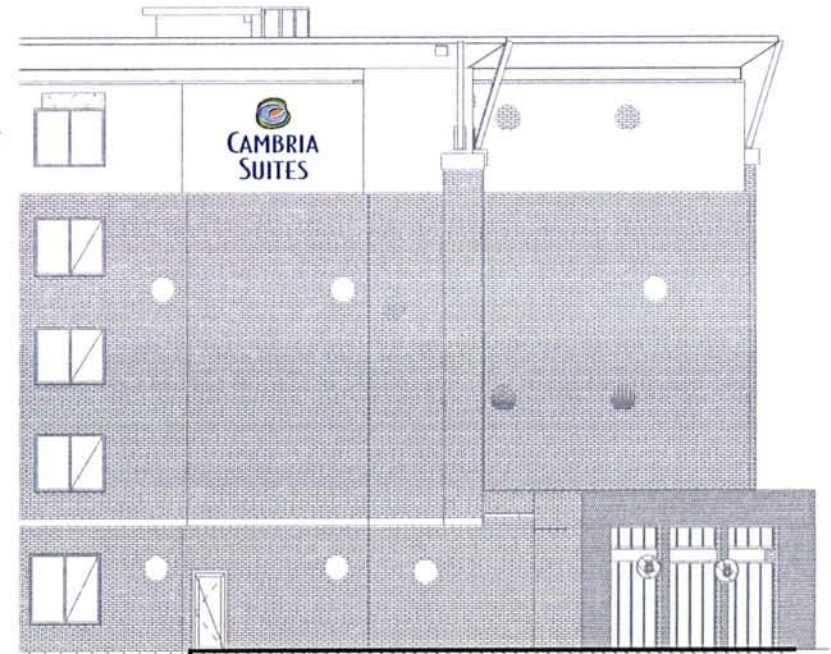
- 3/16" #7328 WHITE ACRYLIC W/ 1ST SURFACE VINYL DECORATION:
- ARLON #3009 (2-LAYERS) BLUE - LOGO DROP SHADOWS
- ARLON #3008 LIME GREEN - TOP & BOTTOM LOGO CENTERS
- ARLON #3039 LIGHT BLUE - MIDDLE LOGO CENTER
- ARLON #3040 ORANGE - LOGO CENTER
- WHITE - LOGO OUTLINE

3/16" #7328 WHITE ACRYLIC FACES W/ BLUE PERFORATED VINYL APPLIED 1ST SURFACE

18" LETTER SET



24" LETTER SET



Customer: CAMBRIA SUITES

Date: 9-9-09

Prepared By: MR/CM

Note: Color output may not be exact when viewing or printing this drawing. All colors used are PMS or the closest CMYK equivalent. If these colors are incorrect, please provide the correct PMS match and a revision to this drawing will be made.

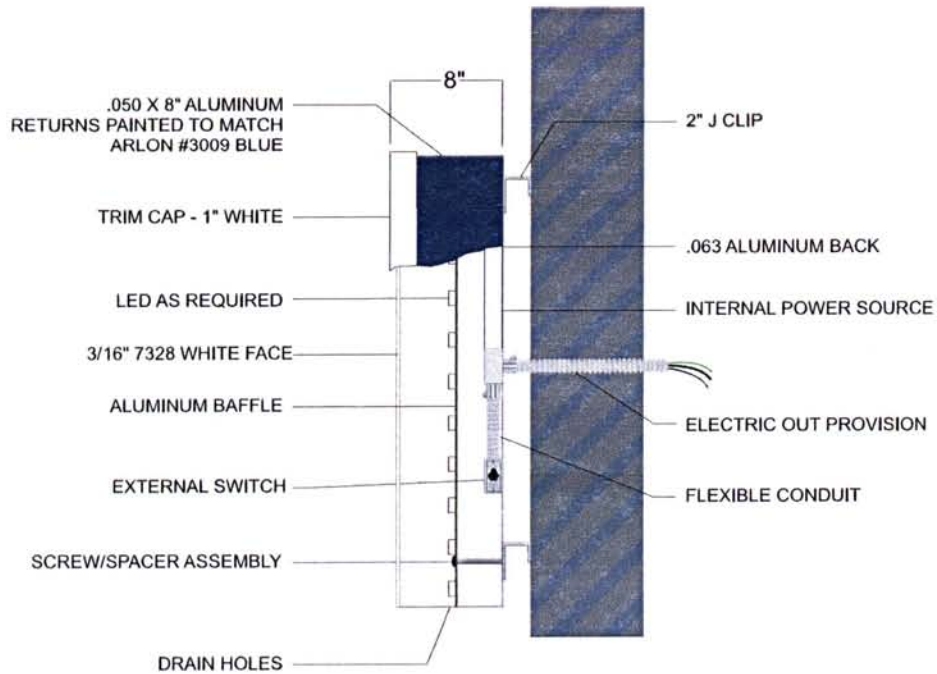
Location: VARIOUS

File Name: CAMBRIA SIGNAGE MANUAL - R5

Eng: X

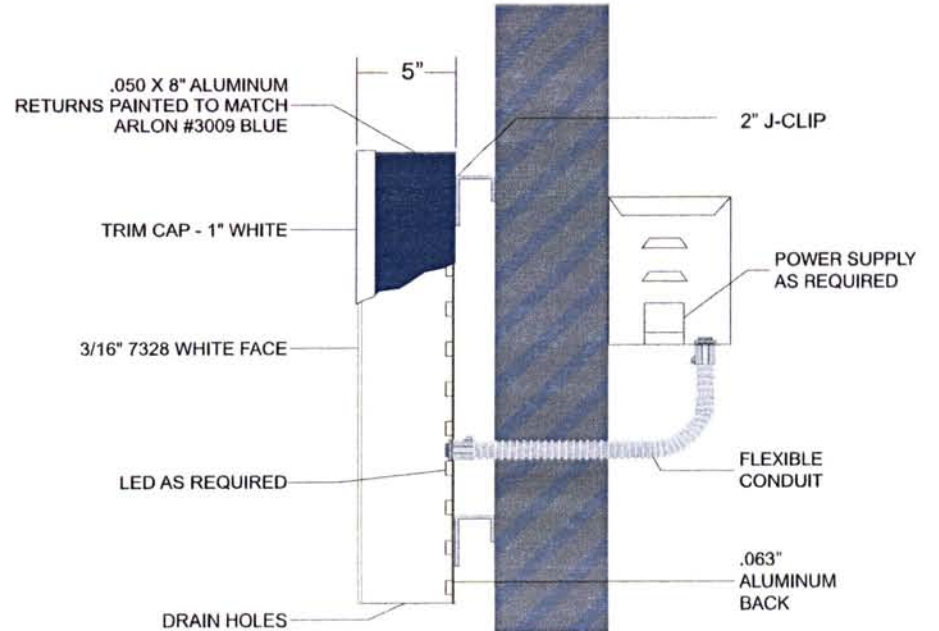


DISTRIBUTED BY SIGN UP COMPANY
700 21st STREET SOUTHWEST
PO BOX 210
WATERTOWN, SD 57201-0210



INTERNAL CHANNEL LETTER
SIDE PROFILE

NOTES:
U.L. APPROVED
ELECTRICAL: 120 VOLTS
EXTERIOR FINISH: PAINT TO MATCH
ARLON #3009 BLUE
INTERIOR FINISH: WHITE



REMOTE CHANNEL LETTER
SIDE PROFILE

NOTES:
U.L. APPROVED
ELECTRICAL: 120 VOLTS
EXTERIOR FINISH: PAINT TO MATCH
ARLON #3009 BLUE
INTERIOR FINISH: WHITE

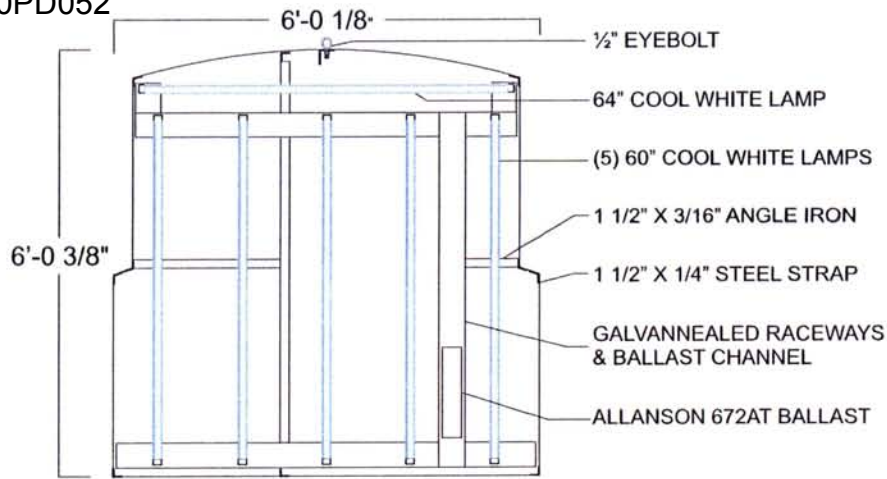
MOUNT BOTTOM OF LETTERS 3" ABOVE EIFS BAND

Customer: CAMBRIA SUITES	Date: 9-9-09	Prepared By: MR/CM	Note: Color output may not be exact when viewing or printing this drawing. All colors used are PMS or the closest CMYK equivalent. If these colors are incorrect, please provide the correct PMS match and a revision to this drawing will be made.
Location: VARIOUS	File Name: CAMBRIA SIGNAGE MANUAL - R5		Eng: X



DISTRIBUTED BY SIGN UP COMPANY
700 21st STREET SOUTHWEST
PO BOX 210
WATERTOWN, SD 57201-0210

10PD052



FRAME & LAMP DETAIL
SCALE: 3/8" = 1'



CROSS SECTION
SCALE: 3/8" = 1'



GRAPHIC DETAIL
SCALE: 3/8" = 1'



FACE DECORATION:

- ARLON #3009 BLUE (2-LAYERS) - BACKGROUND, LOGO DROP SHADOWS, & "BY CHOICE HOTELS" COPY
- ARLON #3008 LIME GREEN - TOP & BOTTOM LOGO CENTERS
- ARLON #3039 LIGHT BLUE - MIDDLE LOGO CENTER
- ARLON #3040 ORANGE - LOGO CENTER
- ARLON #3007 (5570 SERIES) GRAY (OPAQUE) - "BY CHOICE HOTELS" BACKGROUND
- WHITE - "CAMBRIA SUITES" COPY AND LOGO OUTLINE

FRAME NOTES:

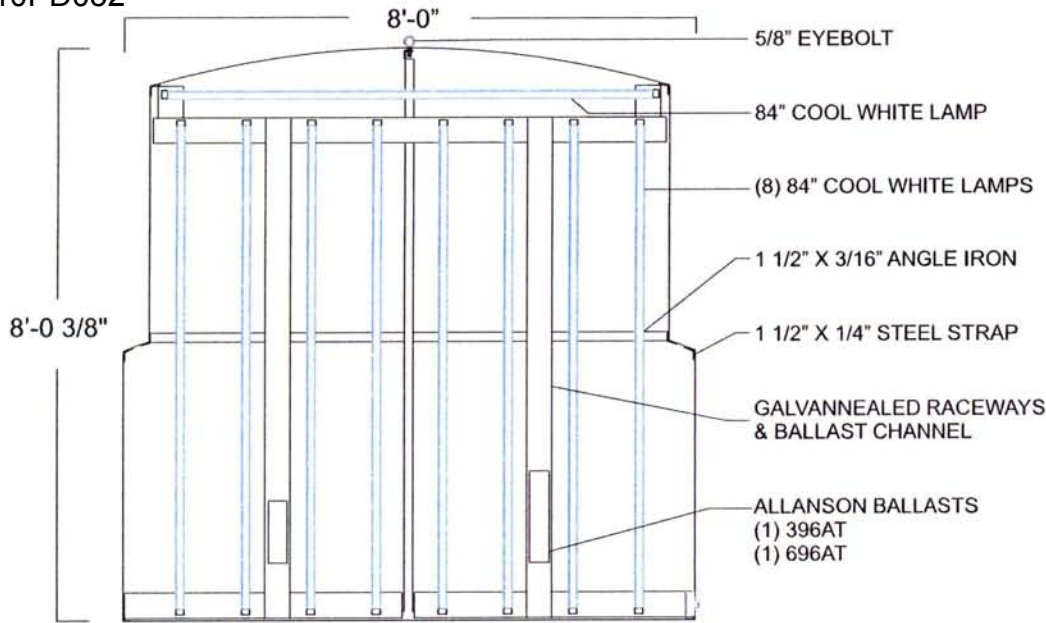
- DESIGN FACTOR: 30 PSF
- INTERIOR FINISH: PRIMED WHITE
- EXTERIOR FINISH: PAINT TO MATCH:
 - ARLON #3009 ON "CAMBRIA SUITES" PORTION AND PMS 421 FOR "BY CHOICE HOTELS" BACKGROUND
- SKINS REMOVABLE FOR SERVICE
- DRILL 3/8" MOUNTING HOLES THROUGH PERIMETER AND BACK BRACE
- ELECTRICAL: 4.20 AMPS; 120 VOLTS
- U.L. APPROVED

Customer: CAMBRIA SUITES	Date: 9-15-09	Prepared By: MR-CM-MR	Note: Color output may not be exact when viewing or printing this drawing. All colors used are PMS or the closest CMYK equivalent. If these colors are incorrect, please provide the correct PMS match and a revision to this drawing will be made.
Location: VARIOUS	File Name: CAMBRIA SIGNAGE MANUAL - R5	Eng: X	

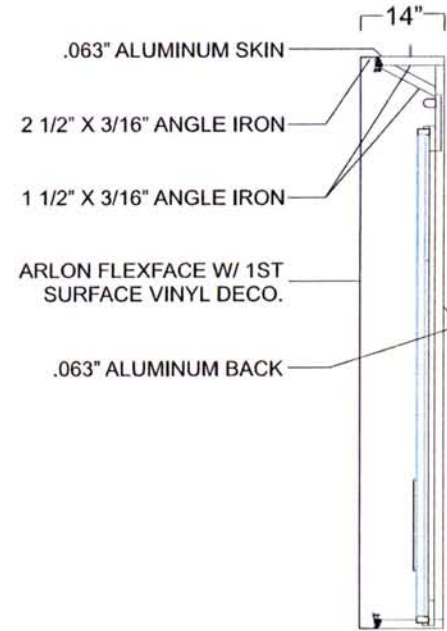


DISTRIBUTED BY SIGN UP COMPANY
700 21st STREET SOUTHWEST
PO BOX 210
WATERTOWN, SD 57201-0210

10PD052



FRAME & LAMP DETAIL
SCALE: 3/8" = 1'



CROSS SECTION
SCALE: 3/8" = 1'

FRAME NOTES:

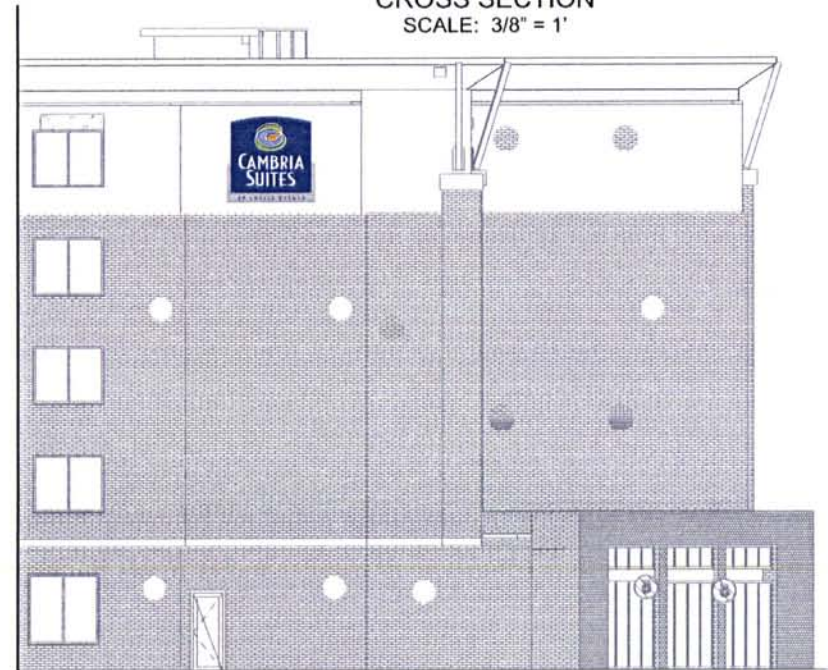
DESIGN FACTOR: 30 PSF
 INTERIOR FINISH: PRIMED WHITE
 EXTERIOR FINISH: PAINT TO MATCH:
 ARLON #3009 ON "CAMBRIA SUITES"
 PORTION AND PMS 421 FOR "BY
 CHOICE HOTELS" BACKGROUND
 SKINS REMOVABLE FOR SERVICE
 DRILL 3/8" MOUNTING HOLES THROUGH
 PERIMETER AND BACK BRACE
 ELECTRICAL: 7.00 AMPS; 120 VOLTS
 U.L. APPROVED

FACE DECORATION:

ARLON #3009 BLUE (2-LAYERS) - BACKGROUND,
 LOGO DROP SHADOWS, & "BY CHOICE HOTELS"
 COPY
 ARLON #3008 LIME GREEN - TOP & BOTTOM LOGO
 CENTERS
 ARLON #3039 LIGHT BLUE - MIDDLE LOGO CENTER
 ARLON #3040 ORANGE - LOGO CENTER
 ARLON #3007 (5570 SERIES) GRAY (OPAQUE) -
 "BY CHOICE HOTELS" BACKGROUND
 WHITE - "CAMBRIA SUITES" COPY AND LOGO
 OUTLINE



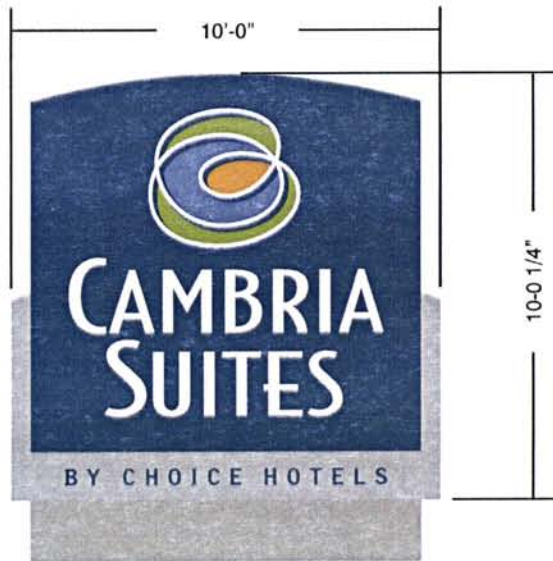
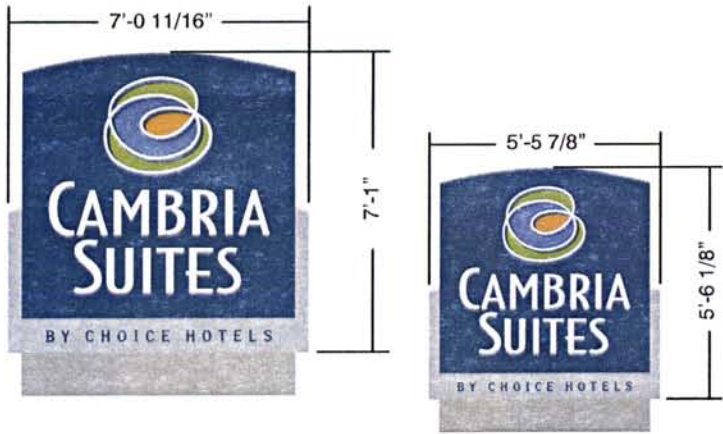
GRAPHIC DETAIL
SCALE: 1/4" = 1'



Customer: CAMBRIA SUITES	Date: 9-15-09	Prepared By: MR	Note: Color output may not be exact when viewing or printing this drawing. All colors used are PMS or the closest CMYK equivalent. If these colors are incorrect, please provide the correct PMS match and a revision to this drawing will be made.
Location: VARIOUS	File Name: CAMBRIA SIGNAGE MANUAL - R5	Eng: X	



DISTRIBUTED BY SIGN UP COMPANY
 700 21st STREET SOUTHWEST
 PO BOX 210
 WATERTOWN, SD 57201-0210

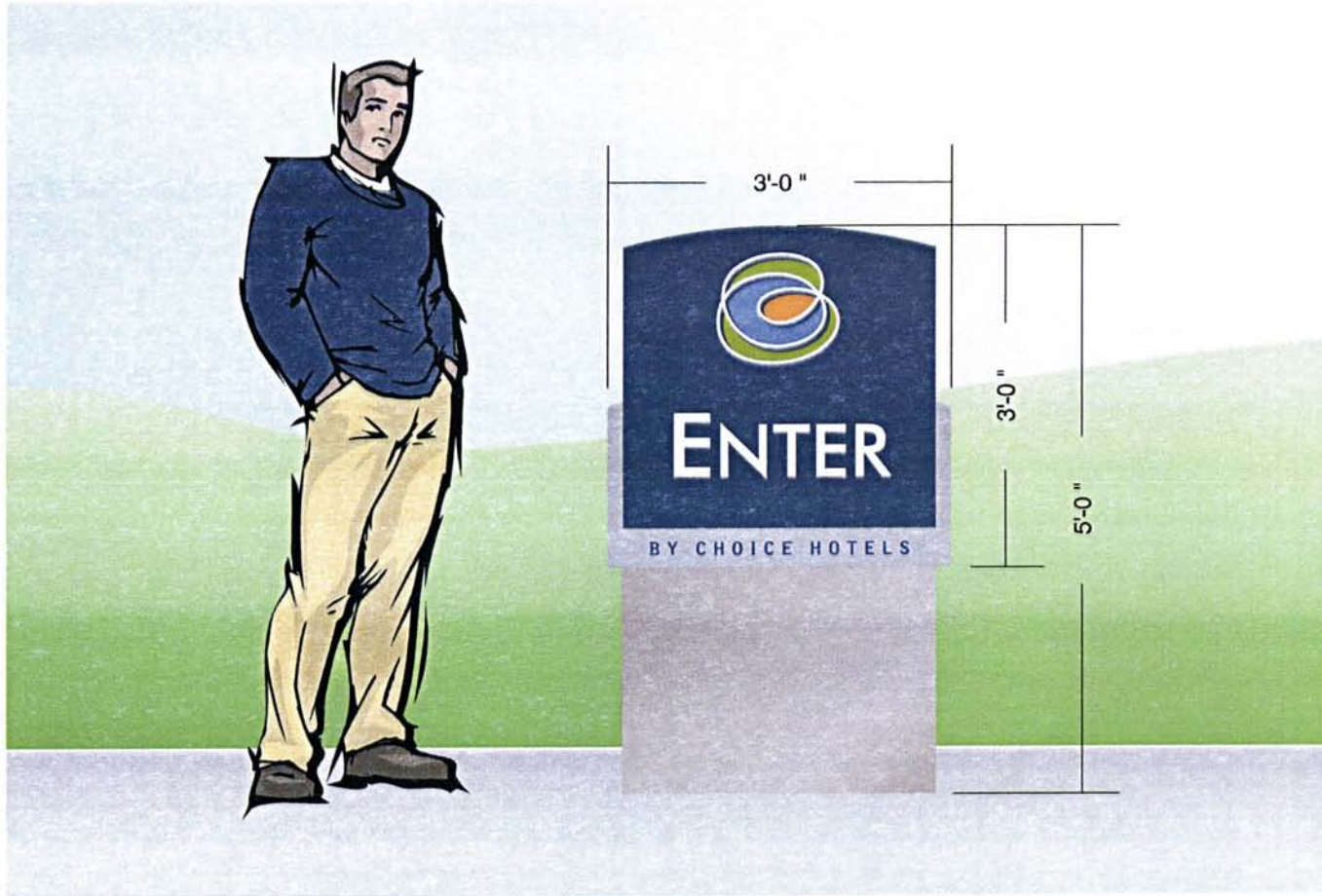


DOUBLE FACE MONUMENT

Customer: CAMBRIA SUITES	Date: 8-14-09	Prepared By: MR	Note: Color output may not be exact when viewing or printing this drawing. All colors used are PMS or the closest CMYK equivalent. If these colors are incorrect, please provide the correct PMS match and a revision to this drawing will be made.
Location: VARIOUS	File Name: CAMBRIA SIGNAGE MANUAL - R5		Eng: X



DISTRIBUTED BY SIGN UP COMPANY
700 21st STREET SOUTHWEST
PO BOX 210
WATERTOWN, SD 57201-0210



DOUBLE FACE DIRECTIONAL

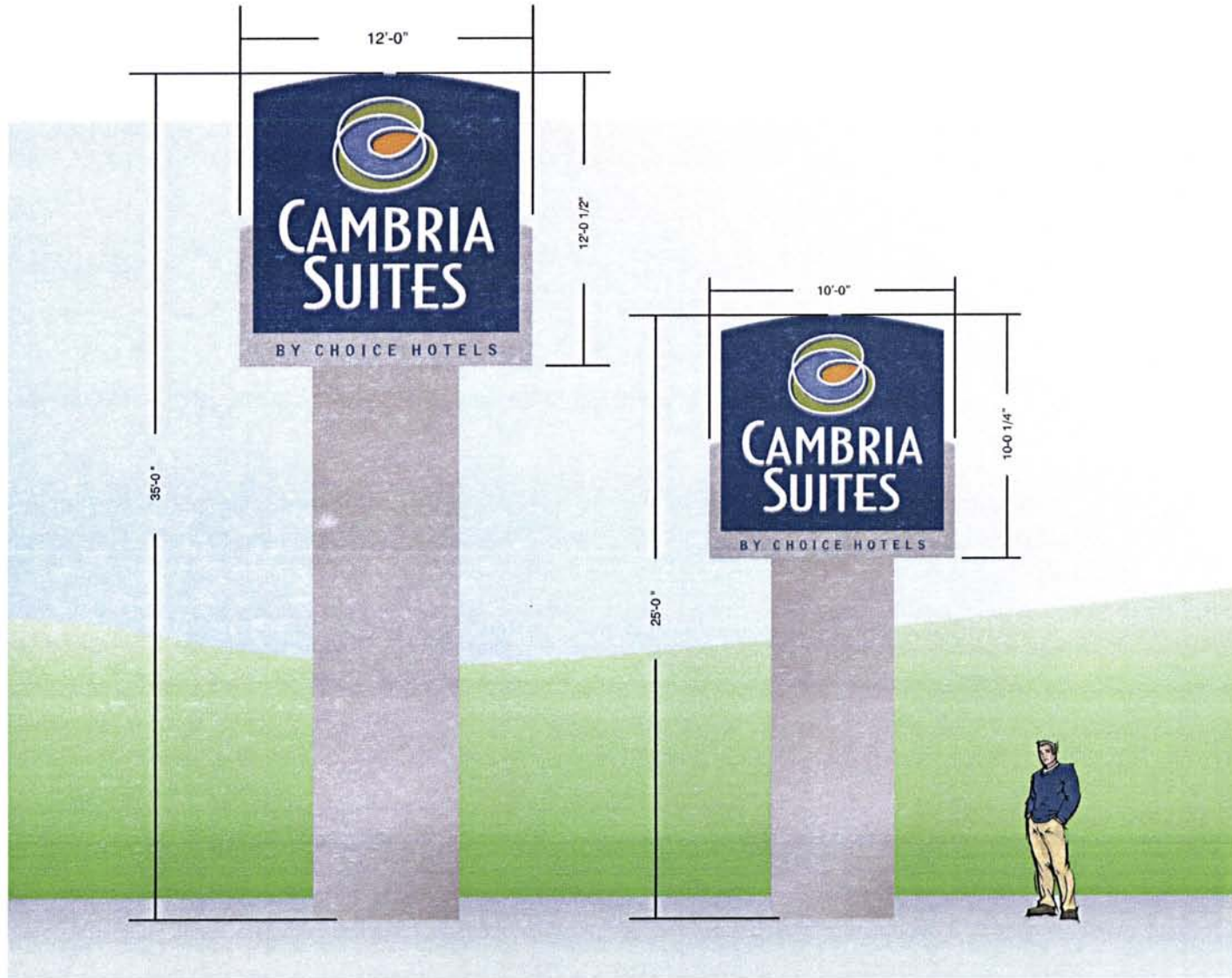
Customer: CAMBRIA SUITES	Date: 8-14-09	Prepared By: MR	Note: Color output may not be exact when viewing or printing this drawing. All colors used are PMS or the closest CMYK equivalent. If these colors are incorrect, please provide the correct PMS match and a revision to this drawing will be made.
Location: VARIOUS	File Name: CAMBRIA SIGNAGE MANUAL - R5		

Eng:
X



DISTRIBUTED BY SIGN UP COMPANY
700 21st STREET SOUTHWEST
PO BOX 210
WATERTOWN, SD 57201-0210

10PD052



DOUBLE FACE PYLONS

Customer: CAMBRIA SUITES	Date: 8-14-09	Prepared By: MR	Note: Color output may not be exact when viewing or printing this drawing. All colors used are PMS or the closest CMYK equivalent. If these colors are incorrect, please provide the correct PMS match and a revision to this drawing will be made.
Location: VARIOUS	File Name: CAMBRIA SIGNAGE MANUAL - R5	Eng: X	



DISTRIBUTED BY SIGN UP COMPANY
700 21st STREET SOUTHWEST
PO BOX 210
WATERTOWN, SD 57201-0210

AUG 25 2010

45' Tall

Each Sign 15'x15'

Management Department



RESTAURANT



605-342-0481
 Fax: 605-342-9474
 1650 Samco Road
 Rapid City, S.D. 57702

ROSENBAUM'S
SIGNS
 and Outdoor Adv. Inc.

*Signing Rapid City
 With Pride
 Since 1928*

