

PHASE I

LOT 2 OF BLOCK 1,  
GATEWAY BUSINESS PARK SUBDIVISION

LOCATED IN THE W1/2 OF THE SE1/4 OF  
SECTION 28, T2N, R8E, BHM  
RAPID CITY, PENNINGTON COUNTY, SOUTH DAKOTA

LOT 1

LOT 2

FOREFATHER FLATS SUBDIVISION

GATEWAY BUSINESS PARK SUBDIVISION  
BLOCK 1

OUTFITTER ROAD

OCTOBER 29, 2010

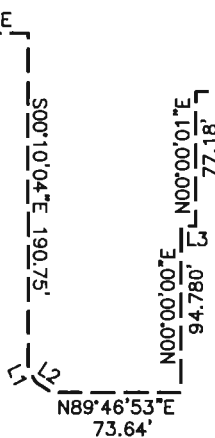


SCALE 1" = 100'



N W 1 / 4 - S E 1 / 4

LINE	BEARING	LENGTH
L1	S25°39'16"E	9.14'
L2	S56°22'25"E	10.96'
L3	N90°00'00"E	8.23'
L4	S89°23'24"E	44.24'
L5	N19°08'40"E	32.41'
L6	N02°40'34"E	25.63'
L7	N36°20'19"W	3.75'
L8	N06°05'08"W	41.12'
L9	N00°00'00"E	1.34'
L10	N90°00'00"E	3.69'
L11	N45°00'00"E	28.28'
L12	S00°00'00"E	115.69'
L13	S60°32'23"W	19.67'
L14	S79°07'35"W	20.25'



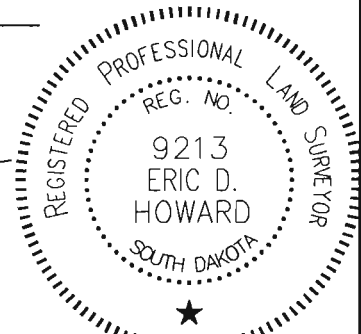
SECTION 1/16 LINE

CURVE	LENGTH	RADIUS	DELTA	CHORD BEARING	CHORD DISTANCE
C1	26.26	23.54	63°55'08"	N36°17'51"W	24.92
C2	174.54	160.00	62°30'13"	S31°15'06"E	166.02

LOT E

N89°50'05"W 531.10'

I-90 RIGHT-OF-WAY



CITY HALL 1903

RENNER & ASSOCIATES, LLC.

616 SIXTH ST. \* RAPID CITY, SD 57701  
PHONE: 605/721-7310 FAX: 605/721-7313  
SPEARFISH OFFICE: 605/717-0016

PREPARED FOR:

DREAM DESIGN INTERNATIONAL, INC  
528 KANSAS CITY STREET, STE. 4  
RAPID CITY, SD 57701  
(605) 348-0638