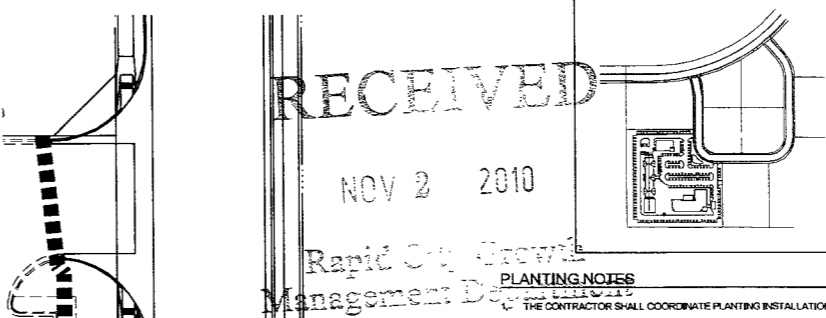


PLANTING SCHEDULE

Table with columns: QTY, KEY, COMMON NAME, BOTANICAL NAME, SIZE, NOTES/SPACING. Includes sections for Deciduous Trees, Coniferous Shrubs, Deciduous Shrubs, Small Ornamental Trees, Perennials, and Ground Cover.



RECEIVED NOV 2 2010 Rapid City Growth Management Department

CITY OF RAPID CITY GROWTH MANAGEMENT DEPT. DEVELOPMENT SERVICES. Plans are reviewed for general conformance with applicable governmental regulations, standards, design criteria and engineering standards.

PLANTING NOTES

- 1. THE CONTRACTOR SHALL COORDINATE PLANTING INSTALLATION WITH OTHER CONTRACTORS PERFORMING WORK ON SITE.
2. PRIOR TO CONSTRUCTION, THE CONTRACTOR SHALL BE RESPONSIBLE FOR LOCATING ALL UNDERGROUND UTILITIES AND SHALL AVOID DAMAGE TO ALL UTILITIES DURING THE COURSE OF THE WORK.
3. THE CONTRACTOR IS SPECIFICALLY CAUTIONED THAT THE LOCATIONS AND/OR ELEVATION OF EXISTING UTILITIES AS SHOWN ON THESE PLANS IS BASED ON RECORDS OF THE VARIOUS UTILITY COMPANIES AND, WHERE POSSIBLE, MEASUREMENTS TAKEN IN THE FIELD.

Table for Submittals and Revisions with columns for Description, Date, and Initials.

Table for Job Information with columns: Internal Job No., Designed By, Drawn By, Surveyed By, Survey Date.

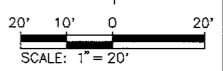
FOR REVIEW ONLY

DREAM DESIGN INTERNATIONAL, INC. ENGINEERING, LANDSCAPE ARCHITECTURE, LAND PLANNING, CONSTRUCTION ADMINISTRATION. 528 KANSAS CITY STREET, SUITE 4, RAPID CITY, SD 57701

PHASE I FINAL PC D PLANTING PLAN. SHEET NUMBER: L2 OF 34. Includes a logo and scale information.

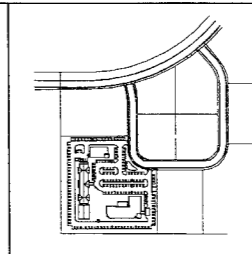
WATER QUALITY INFILTRATION SWALE - PLANT KEY

- WATER QUALITY INFILTRATION SWALE WILL BE PLANNED ON SITE WITH THE CONTRACTOR FOR CORRECT SPACING AND INSTALLATION OF PLANTS. THE PLANT MIX WILL INCLUDE (BASED ON AVAILABILITY):
• BIG BLUE STEM
• BUTTERFLY MILKWEED



Plans are reviewed for general conformance with applicable governmental regulations, standards, design criteria and engineering standards. The City of Rapid City does not certify the suitability, adequacy or completeness of the plans or design, which are the responsibility of the engineer of record. All necessary permits shall be obtained prior to construction of the proposed public improvements.

Engineering Reviewer: \_\_\_\_\_ Date: \_\_\_\_\_  
COMMENTS



PLANTING NOTES

FOR CITY OF RAPID CITY USE ONLY  
CAMBRIA LANDSCAPE SUMMARY  
TOTAL BUILDING SQ.FT. 20,729  
SITE AREA PHASE 1 - 3.43 ACRES 149,221  
LANDSCAPE POINTS REQUIRED 128,492

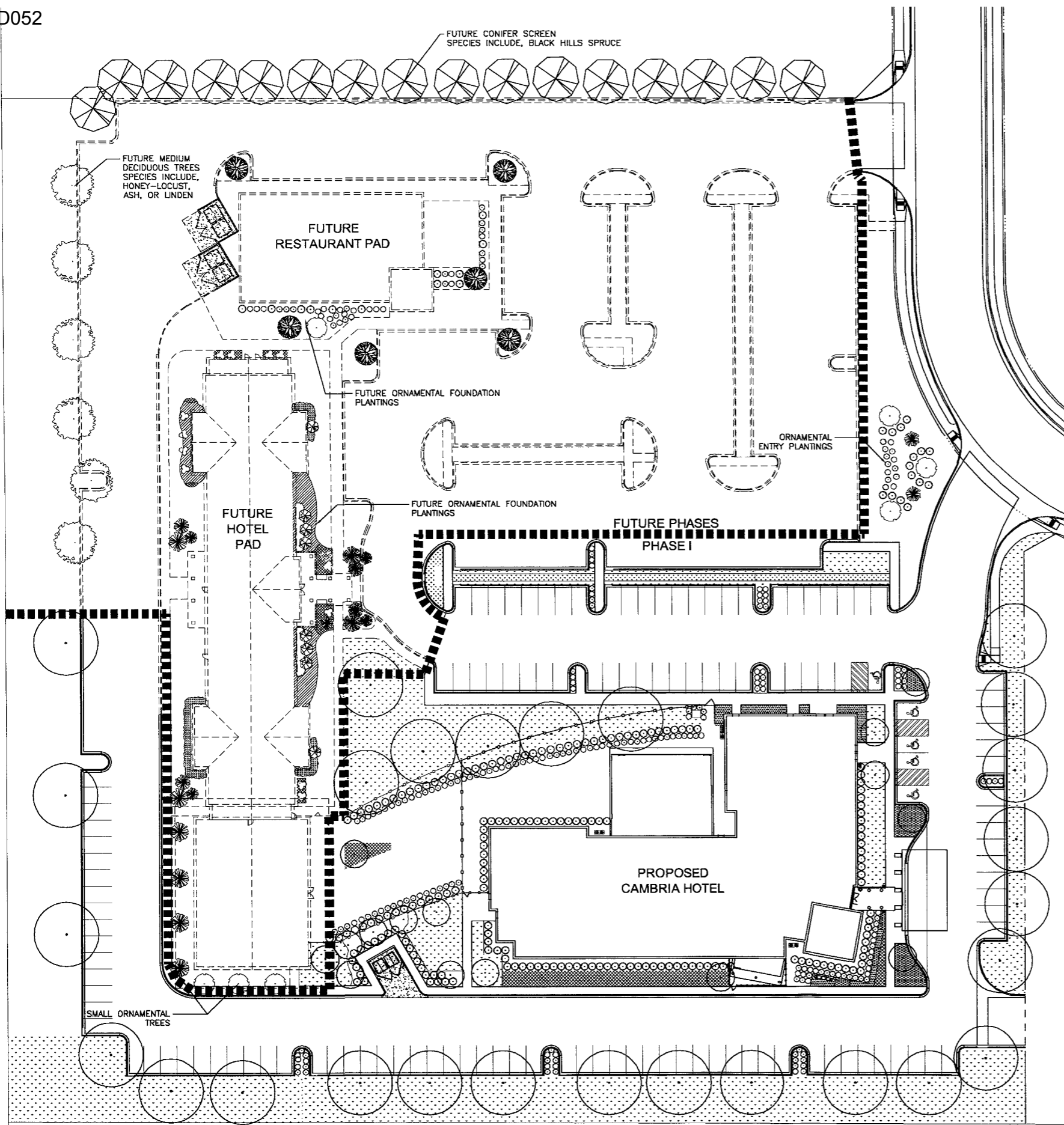
PHASE 1 LANDSCAPE POINTS PROVIDED: 154,540

ITEM	QUANTITY	POINT VALUE	TOTAL POINTS
DECIDUOUS TREES - MED	27	1000	27,000
DECIDUOUS TREES - MED (ROW)	0	250	0
DECIDUOUS TREES - SMALL	15	500	7,500
DECIDUOUS SHRUBS	173	250	43,250
GROUNDCOVER (SY)	131	100	13,100
CONIFER SHRUB	178	250	44,500
CONIFEROUS TREES	0	2000	0
TURFGRASS (SY)	1527	10	15,270
NATIVE GRASS & FORBS (SQ.YD)	392	10	3,920
TOTAL			154,540 PTN

Internal Job No: 10-0568  
Designed By: GB/DE  
Surveyed By: RENNER

Drawn By: MSS  
Survey Date: 8/17/2010

**FOR REVIEW ONLY**



RECEIVED

NOV 2 2010

Rapid City Growth Management Department

**DREAM DESIGN INTERNATIONAL, INC.**

ENGINEERING, LANDSCAPE ARCHITECTURE, LAND PLANNING, CONSTRUCTION ADMINISTRATION  
528 KANSAS CITY STREET, SUITE 4, RAPID CITY, SD 57701  
PHONE: (605) 348-0538 FAX: (605) 348-0545 WWW.DREAMDESIGNING.COM

GATEWAY BUSINESS PARK SUBDIVISION  
CAMBRIA HOTEL



Sheet Name:

PHASE I INITIAL PCD PLANTING PLAN

30 15 0 30  
SCALE: 1" = 30'