

GENERAL SHEET NOTES

SHEET KEYNOTES

- 1. NEW ALUMINUM WINDOW TO MATCH EXIST.

UPPER DECK ARCHITECTS, INC.
 1301 W. OMAHA ST., SUITE 212
 RAPID CITY, SD 57102
 PH: 605 721-0237
 FAX: 605 721-0240

NO	DESCRIPTION	DATE
	CITY REVIEW	11/10/10

© UPPER DECK ARCHITECTS 2010
 All Drawn & Written Information Appearing Herein Shall Not Be Duplicated, Disposed Or Otherwise Without The Express Written Consent Of Upper Deck Architects, Inc.

CONSULTANTS:

Knutson Studio Apartments
 Rapid City, South Dakota

RECEIVED

NOV 11 2010

Rapid City Growth Management Department

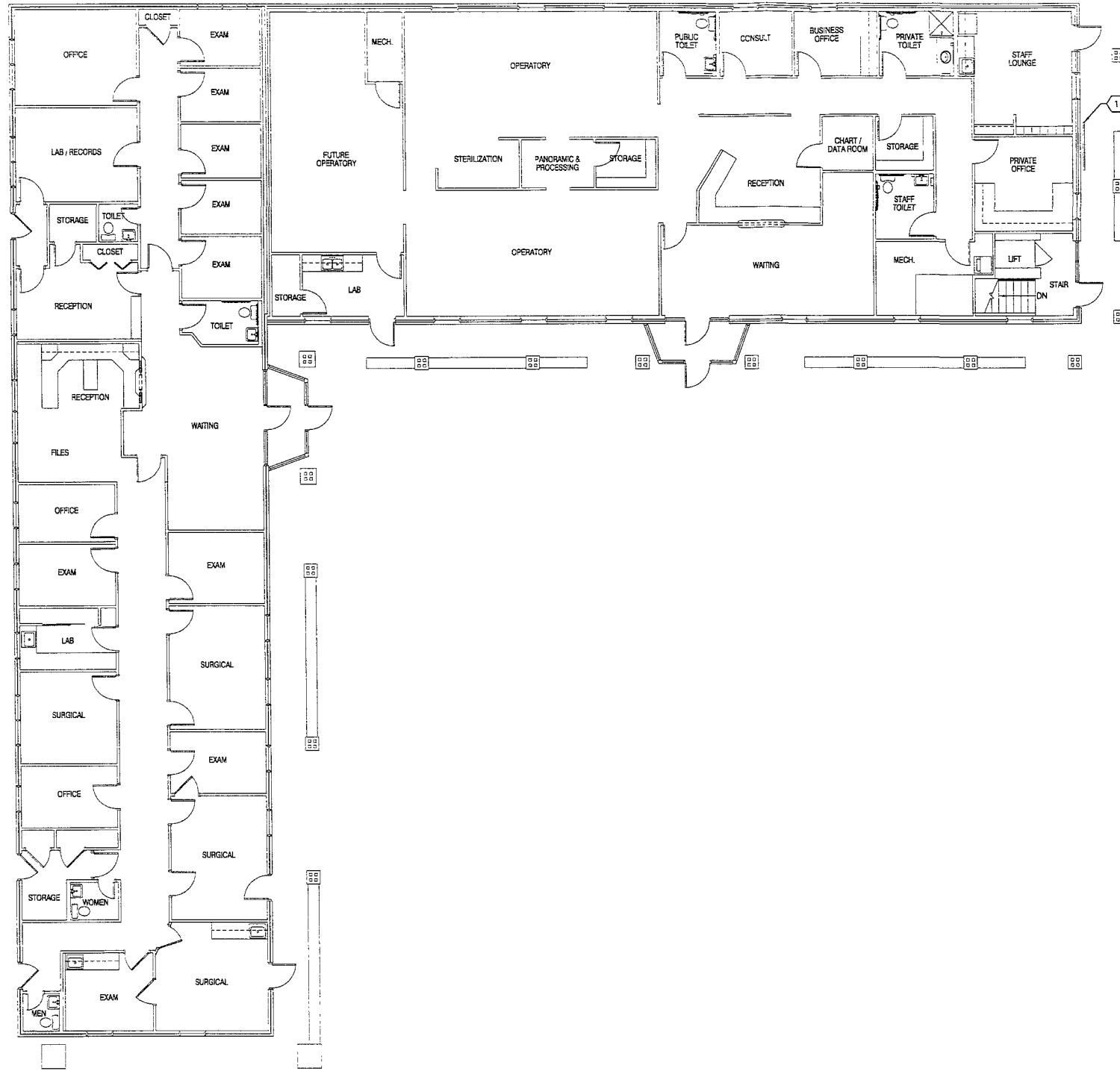
PROJECT NUMBER:	10187
DRAWN BY:	TSK
CHECK BY:	TDC

SHEET TITLE:
 PROPOSED BASEMENT FLOOR PLAN

A-101



PRELIMINARY-NOT FOR CONSTRUCTION



GENERAL SHEET NOTES

SHEET KEYNOTES

- 1. NEW 2'-0" x 6'-0" WOOD SIGN MOUNTED ON BUILDING - TOP @ 7'-4" ABOVE FLOOR - SIGN TO BE SIMILAR TO EXIST. SIGNS FOR BUSINESS ON SITE

UPPER DECK ARCHITECTS, INC.
 1301 W. OMAHA ST., SUITE 212
 RAPID CITY, SD 57102
 PH: 605 721-0237
 FAX: 605 721-0240

NO	DESCRIPTION	DATE
	CITY REVIEW	11/10/10

© UPPER DECK ARCHITECTS, INC.
 All Drawn & Written Information Appearing Within Shall Not Be Duplicated, Disclosed Or Otherwise Without The Express Written Consent Of Upper Deck Architects, Inc.

Knutsen Studio Apartments
 Rapid City, South Dakota

RECEIVED

NOV 1 2010

Rapid City Growth
 Management Department

PROJECT NUMBER:	10187
DRAWN BY:	TSK
CHECK BY:	TDC
SHEET TITLE:	EXISTING FIRST FLOOR PLAN