

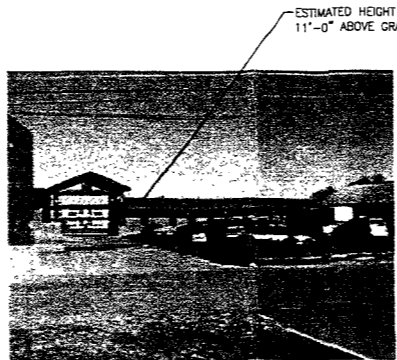
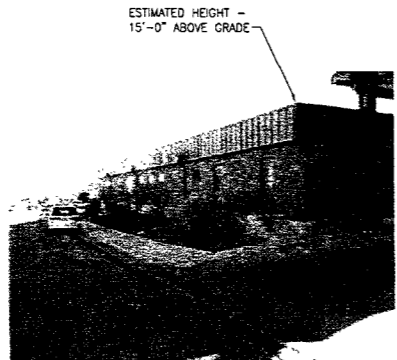
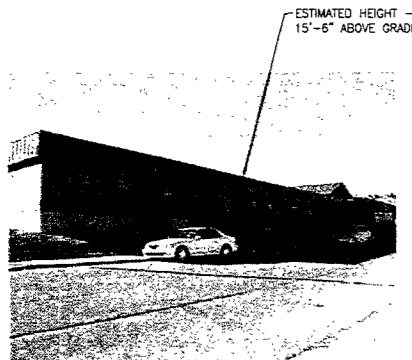
1

2

3

4

5

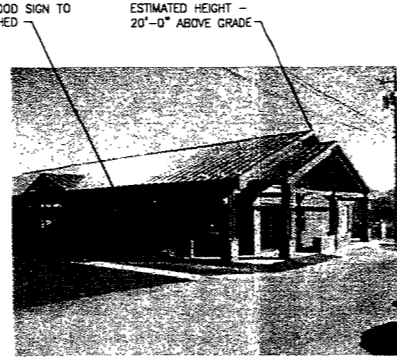


1 EXISTING CONDITIONS PHOTO
SCALE: N.T.S.

2 EXISTING CONDITIONS PHOTO
SCALE: N.T.S.

3 EXISTING CONDITIONS PHOTO
SCALE: N.T.S.

4 EXISTING CONDITIONS PHOTO
SCALE: N.T.S.

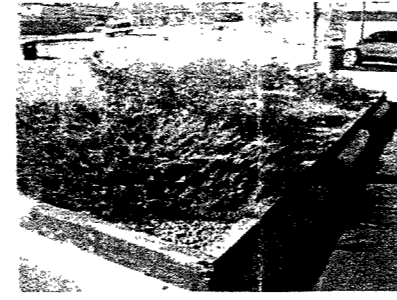
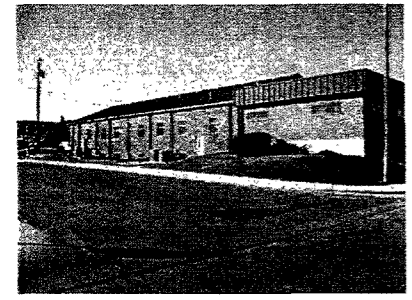


5 EXISTING CONDITIONS PHOTO
SCALE: N.T.S.

6 EXISTING CONDITIONS PHOTO
SCALE: N.T.S.

7 EXISTING CONDITIONS PHOTO
SCALE: N.T.S.

8 EXISTING CONDITIONS PHOTO
SCALE: N.T.S.



9 EXISTING CONDITIONS PHOTO
SCALE: N.T.S.

10 EXISTING CONDITIONS PHOTO
SCALE: N.T.S.

11 EXISTING CONDITIONS PHOTO
SCALE: N.T.S.

GENERAL SHEET NOTES

SHEET KEYNOTES

UPPER DECK ARCHITECTS, INC.
1301 W. OMAHA ST., SUITE 212
RAPID CITY, SD 57701
PH: 605 721-0237
FAX: 605 721-0240

NO	DESCRIPTION	DATE
	CITY REVIEW	11/10/10

© UPPER DECK ARCHITECTS 2010
All Drawn & Written Information Appearing Herein Shall Not Be Duplicated, Disclosed Or Otherwise Reproduced Without The Express Written Consent Of Upper Deck Architects, Inc.

Knutsen Studio Apartments
Rapid City, South Dakota

RECEIVED

NOV 11 2010

Rapid City Growth
Management Corporation

PROJECT NUMBER:	10187
DRAWN BY:	TSK
CHECK BY:	TDC
SHEET TITLE:	

EXISTING SITE
CONDITIONS PHOTOS

AP101

PRELIMINARY - NOT FOR CONSTRUCTION