

PLANTING SCHEDULE

DECIDUOUS TREES

QTY	KEY	COMMON NAME	BOTANICAL NAME	SIZE	NOTES/SPACING
6	AML	AMERICAN LINDEN	TILIA AMERICANA	2.0" CAL	SPECIMEN
6	BVL	BOULEVARD LINDEN	TILIA AMERICANA 'BOULEVARD'	2.0" CAL	SPECIMEN
19	SMH	SHADE MASTER HONEYLOCUST	GLEDTISIA TRACANTHOS VAR. INERMIS 'SHADE MASTER'	2.0" CAL	SPECIMEN

CONIFEROUS SHRUBS

71	MJ	MANEY JUNIPER	JUNIPERUS CHINENSIS 'MANEY'	7 GAL	5'-0" O.C.
78	SGJ	SEA GREEN JUNIPER	JUNIPERUS CHINENSIS 'SEA GREEN'	7 GAL	5'-0" O.C.
18	GJ	GREY OWL JUNIPER	JUNIPERUS VIRGINIANA 'GREY OWL'	7 GAL	5'-0" O.C.
14	SVJ	SAVIN JUNIPER	JUNIPERUS SABINA	5 GAL	5' O.C.

DECIDUOUS SHRUBS

27	WRR	WHITE RUOGOSA ROSE	ROSA RUOGOSA ALBA	3 GAL	5'-0" O.C.
12	NWR	NEARLY WILD ROSE	ROSA 'NEARLY WILD'	3 GAL	4'-0" O.C.
28	RR	RUOGOSA ROSE	ROSA 'RUOGOSA'	3 GAL	4'-0" O.C.
27	GF3	GOLD FLAME SPIREA	SPIRAEA X BUMALDA 'GOLD FLAME'	3 GAL	4'-0" O.C.
31	AW3	ANTHONY WATERER SPIREA	SYRINGA X BUMALDA 'ANTHONY WATERER'	3 GAL	4'-0" O.C.
48	DR3	DART'S RED SPIREA	SYRINGA X BUMALDA 'DART'S RED'	3 GAL	4'-0" O.C.

SMALL ORNAMENTAL TREES

8	ISSJ	SPRING SNOW CRAB	MALUS SPRING SNOW	2" CAL	SPEC.
4	KC	KELSEY CRAB	MALUS KELSEY	2" CAL	SPEC.
3	PF3	PRAIRIE FIRE CRAB	MALUS PRAIRIE FIRE	2" CAL	SPEC.

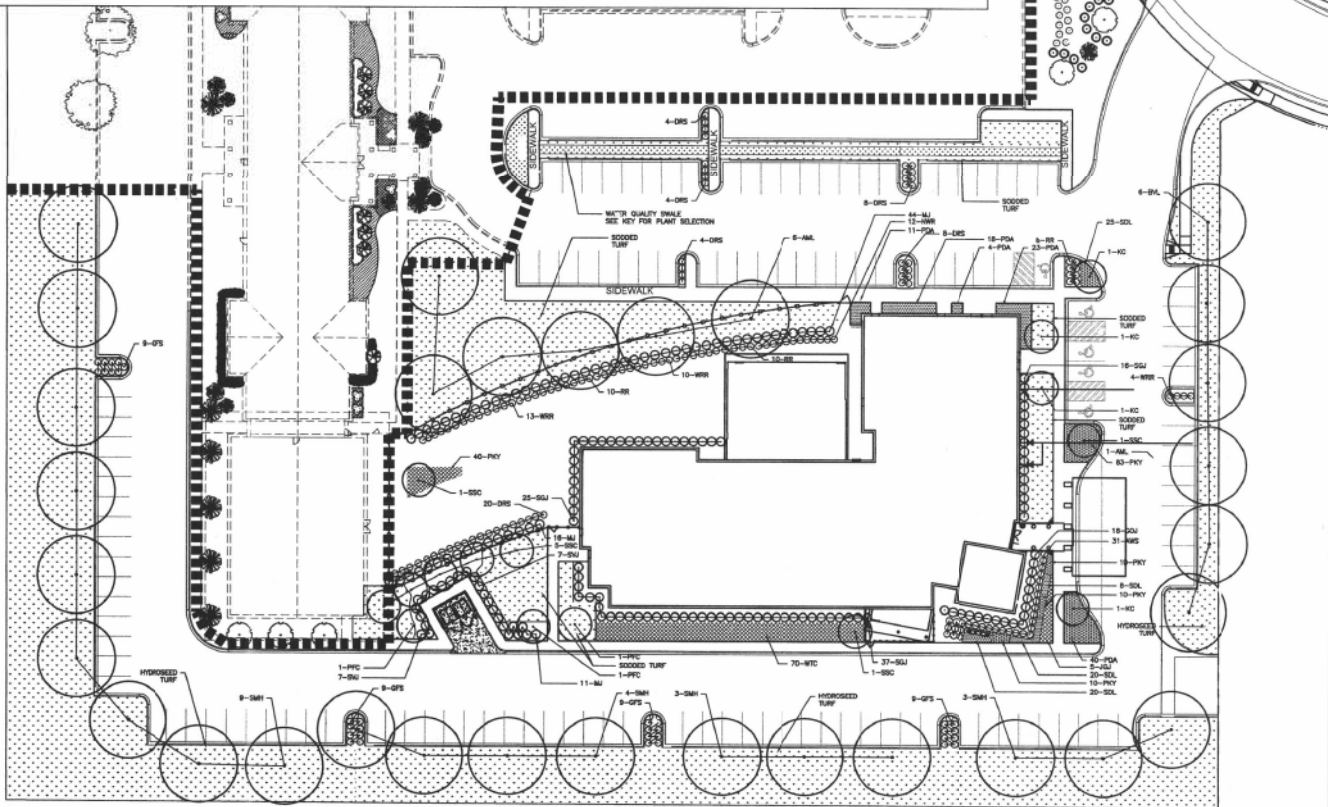
PERENNIALS

153	PKY	PAPRIKA YARROW	ACHILLEA 'PAPRIKA'	1 GAL	24" O.C.
96	POA	PURPLE DOME ASTER	ASTER NOVAE-ANGLIAE 'PURPLE DOME'	1 GAL	36" O.C.
73	SDL	STELLA D'ORO DAYLILY	HEMEROCALLIS 'STELLA D'ORO'	1 GAL	24" O.C.

GROUND COVER

70	WTC	WINTERCREEPER	EUONYMUS FORTUNEI	2 GAL	5' O.C.
5	GJG	JAP GARDEN JUNIPER	JUNIPERUS PROCUMBENS 'NANA'	3 GAL	4' O.C.

Euonymus fortunei



CITY OF RAPID CITY
GROWTH MANAGEMENT DEPT.
DEVELOPMENT SERVICES

Submitted: _____
Date: _____
Revisions: _____

Plans are reviewed for general conformance with applicable governmental regulations, professional design criteria and engineering standards. The City of Rapid City does not certify the suitability, accuracy or completeness of the plans or design, which are the responsibility of the engineer of record. All necessary permits shall be obtained prior to construction of the proposed public improvements.

Engineering Reviewer: _____ Date: _____
Comments: _____

PLANTING NOTES

- THE CONTRACTOR SHALL COORDINATE PLANTING INSTALLATION WITH OTHER CONTRACTORS PERFORMING WORK ON SITE.
- PRIOR TO CONSTRUCTION, THE CONTRACTOR SHALL BE RESPONSIBLE FOR LOCATING ALL UNDERGROUND UTILITIES AND SHALL AVOID DAMAGE TO ALL UTILITIES DURING THE COURSE OF THE WORK. THE CONTRACTOR IS RESPONSIBLE FOR REPAIRING ANY AND ALL DAMAGE TO UTILITIES, STRUCTURES, SITE APPURTENANCES, ETC WHICH OCCURS AS A RESULT OF THE LANDSCAPE AND IRRIGATION CONSTRUCTION.
- THE CONTRACTOR IS SPECIFICALLY CAUTIONED THAT THE LOCATIONS AND/OR ELEVATION OF EXISTING UTILITIES AS SHOWN ON THESE PLANS IS BASED ON RECORDS OF THE VARIOUS UTILITY COMPANIES AND, WHERE POSSIBLE, MEASUREMENTS TAKEN IN THE FIELD. THE INFORMATION IS NOT TO BE RELIED ON AS BEING EXACT OR COMPLETE. THE CONTRACTOR MUST CALL THE APPROPRIATE UTILITY COMPANY TO DETERMINE EXACT FIELD LOCATION OF UTILITIES. IT SHALL BE THE RESPONSIBILITY OF THE CONTRACTOR TO RELOCATE ALL EXISTING UTILITIES WHICH CONFLICT WITH THE PROPOSED IMPROVEMENTS SHOWN ON PLANS.
- NO PLANT OR CULTIVAR SUBSTITUTION WILL BE ACCEPTABLE WITHOUT WRITTEN APPROVAL BY THE LANDSCAPE ARCHITECT OR OWNER'S CIVIL ENGINEERING CONSULTANT.
- ALL PLANTING LOCATIONS SHALL BE STAKED OR SET OUT BY THE CONTRACTOR. THE CONTRACTOR SHALL NOTIFY THE LANDSCAPE ARCHITECT 2 DAYS PRIOR TO PLANTING THE STAKING IS COMPLETE.
- ALL TREES AND SHRUBS SHALL BEAR THE SAME RELATIONSHIP TO PLANTED GRADE AS IN THE NURSERY.
- ALL SYNTHETIC MATERIALS FROM AROUND THE TREE TRUNK AND ROOT BALL SHALL BE REMOVED AND NOT INCLUDED WITHIN THE BACKFILL. SOIL, MULCH, STRIP, ROPE, SYNTHETIC BURLAP, PLASTIC STRAPPING, AND OTHER MATERIALS THAT WILL NOT DEGRADE IN THE SOIL SHALL BE REMOVED AT PLANTING.
- THE CONTRACTOR SHALL EXERCISE CARE IN THE INSTALLATION OF ALL PLANTING MATERIAL. ANY PLANT MATERIAL KILLED OR DESTROYED DURING CONSTRUCTION SHALL BE REPLACED BY THE CONTRACTOR AT NO COST TO THE OWNER.
- ALL PLANTING MATERIAL SHALL HAVE A 2 YEAR WARRANTY PERIOD. TURF SHALL HAVE A 90 DAY WARRANTY PERIOD.
- THE WARRANTY PERIOD SHALL BEGIN ONCE PLANTING AND IRRIGATION HAVE BEEN ACCEPTED IN WRITING FROM THE OWNER.
- THE PLANTING SEASON SHALL BE FROM
 - 10.1. SPRING: APRIL 15TH TO JUNE 15TH
 - 10.2. FALL: SEPT. 15TH TO OCT. 15TH.
- TREES SHALL BE SPRAYED WITH AN ANTI-DESICCANT PRIOR TO LEAVING THE NURSERY AND WITHIN 24 HOURS OF PLANTING.
- A SLOW RELEASE FERTILIZER SHALL BE APPLIED TO THE PLANTING SOIL AS PER THE PLANTING SPECIFICATIONS AND SOIL TEST RECOMMENDATIONS. PRE-PLANTING FERTILIZER SHALL BE APPLIED AT A RATE AS PER SOIL TEST RECOMMENDATIONS. FOR TREES, SLOW RELEASE FERTILIZER TABLETS PLACED IN PLANTING PITS ARE ACCEPTABLE.
- ALL MULCH USED ON SITE SHALL BE 1/4" SHREDDED HARDWOOD MULCH. THE MULCH SHALL BE INSTALLED TO A 4" DEPTH.
- ALL PLANT STOCK SHALL COMPLY WITH THE CURRENT ADDITION OF THE AMERICAN STANDARD FOR NURSERY STOCK.
- ALL PLANTING SOURCES SHALL BE FROM LIKE CLIMATES AND SOIL CONDITIONS AS PROJECT. NOTIFY LANDSCAPE ARCHITECT IF PLANTING SOURCES ARE OUTSIDE OF A 300 MILE DISTANCE FOR REVIEW OF NURSERY AND CONDITIONS.
- UNLESS OTHERWISE INDICATED ALL PLANTING BEDS IN TURF AREAS SHALL BE BORDERED BY A 1/4" THICK 1" BLACK STEEL LANDSCAPE EDGER. SEE PLANTING DETAILS.
- FINISHED GRADE SHALL BE 8" BELOW 3" ABOVE SOLO TOP OF CURB AND 3" ABOVE SOLO TOP OF CURB FOR SOO. OTHER AREAS AS SPECIFIED. SHALL RECEIVE A MULCH DEPTH OF 4" OVER THE ROOT BALL.
- IF A CONFLICT SHOULD BEHIND THE PLANTING SCHEDULE AND THE PLAN COUNT, THE PLAN COUNT TAKES PRECEDENCE OVER THE PLANTING SCHEDULE.
- TURFGRASS SOO: SEE PLAN FOR LOCATIONS.
 - 19.1. SOO SHALL BE WELL ROOTED AND BE COMPLETELY FREE FROM NOCIOUS WEEDS AND REASONABLY FREE FROM OTHER OBJECTS/WEEDS, GRASSES, WEEDS, AND STONES. SOOING AND SEEDING SHALL BE DONE IN ACCORDANCE WITH THE SOUTH DAKOTA STANDARD SPECIFICATIONS FOR HIGHWAY CONSTRUCTION.
 - 19.2. CERTIFIED COMP. FERT. SPECIFICATIONS FOR TURFGRASS SOO MATERIALS BY THE TURFGRASS SOCIETY. SPECIFICATIONS TO TURFGRASS SOOING: FURNISH VISIBLE SOO OF UNIFORM DENSITY, COLOR, AND TEXTURE. STRONGY ROOTED, AND CAPABLE OF VIGOROUS GROWTH AND DEVELOPMENT WHEN PLANTED.
 - 19.3. THE SOO SHALL BE A FULL SUN MIXTURE TYPE BLUE GRASS (POA PRATENSIS) MIX CONTAINING A MINIMUM OF 3 CULTIVARS.
 - 19.4. LAY SOO WITHIN 24 HOURS OF HARVESTING. DO NOT LAY SOO IF DORMANT OR IF GROUND IS FROZEN OR MUDDY.
 - 19.5. LAY SOO TO FORM A SOLID MASS WITH TIGHTLY FITTED JOINTS. TIE ENDS AND SEES OF SOO. DO NOT STRETCH OR OVERLAP. STAGGER SOO STRIPS OR PADS TO OFFSET JOINTS IN ADJACENT COURSES. AVOID DAMAGE TO SUBGRADE OR SOO DURING INSTALLATION. TAMP AND ROLL LIGHTLY TO ENSURE CONTACT WITH SUBGRADE. ELIMINATE AIR POCKETS, AND FORM A SMOOTH SURFACE. WORK OFF SOO ON THE GROUND INTO MINOR CRACKS BETWEEN PIECES OF SOO. REMOVE EXCESS TO AVOID SMOTHERING SOO AND ADJACENT ORNAMENTAL.
- THE CONTRACTOR SHALL FULLY COMPLY WITH ALL RAPID CITY ZONING CODES SECTION 17.50.300 - LANDSCAPE ORDINANCE.
- ALL LANDSCAPE BEDS SHALL HAVE LANDSCAPE FABRIC INSTALLED UNDER THE MULCH BED.
- 21.1. COMPOSITE FABRIC: WOVEN, NEEDLE-PUNCHED POLYPROPYLENE SUBSTRATE BONDED TO A NONWOVEN POLYPROPYLENE FABRIC. 4.8 OZ./SQ. YD.
- THE PLANT MATERIAL INSTALLATION SHALL BE TIMED WITH IRRIGATION INSTALLATION ALLOWING PLANTS TO GET RECOMMENDED WATER AMOUNTS. OTHER THAN IMMEDIATE PLANT WATERING, TEMPORARY WATERING SHALL NOT BE ALLOWED.
- ALL PLANTS ARE SUBJECT TO THE APPROVAL OF THE LANDSCAPE ARCHITECT AND/OR OWNER BEFORE, DURING AND AFTER INSTALLATION.
- CONTRACTOR IS RESPONSIBLE FOR VERIFYING ALL QUANTITIES SHOWN ON THESE PLANS BEFORE PRICING THE WORK.
- ALL PLANTS MUST BE HEALTHY, VIGOROUS MATERIAL, FREE OF PEST AND DISEASE.
- ALL PLANTS MUST BE CONTAINER GROWN OR BALLED AND BURLAPPED AS INDICATED IN THE PLANT LIST.
- ALL TREES MUST BE STRAIGHT TRUNKED AND FALL HEADED AND MEET ALL REQUIREMENTS SPECIFIED.
- CONTRACTOR TO TAKE SPECIAL CARE TO MAINTAIN SOO IN THE AREAS OF CHANNELIZED FLOW UNITS. SOO HAS ESTABLISHED THE DRAINAGEWAYS. INLETS MUST BE KEPT FREE OF SEDIMENT. ANY AREAS OF EROSION MUST BE MAINTAINED IMMEDIATELY.

IRRIGATION: THE IRRIGATION SYSTEM WILL BE A SPRAY AND DRIP SYSTEM. TURF AREAS WILL UTILIZE ROTORS AND SPRAY HEADS. ALL PLANTING AREAS SHALL BE XERISCAPE SYSTEMS AND RECEIVE EMITTERS. THE IRRIGATION SYSTEM WILL BE SUPPLIED BY A 2" BACKFLOW PREVENTOR AND SHALL BE A LOCATED IN THE BUILDING MECHANICAL ROOM. ALL PLUMBING SHALL FOLLOW LOCAL PLUMBING CODES.

WATER QUALITY INFILTRATION SWALE - PLANT KEY

- WATER QUALITY INFILTRATION SWALE WILL BE PLANNED ON SITE WITH THE CONTRACTOR FOR CORRECT SPACING AND INSTALLATION OF PLANTS. THE PLANT MIX WILL INCLUDE (BASED ON AVAILABILITY):
- BIG BLUE STEM
 - BUTTERNUT MILKWEED
 - PURPLE DOME ASTER
 - JOE PYE WEED
 - WINTERGREEN
 - PRAIRIE BLAZING STAR
 - BLUE LOBELIA
 - LITTLE BLUESTEM
 - PRAIRIE CORNGRASS



DREAM DESIGN INTERNATIONAL, INC.
ENGINEERING, LANDSCAPE ARCHITECTURE, LAND PLANNING, CONSTRUCTION ADMINISTRATION
528 KANSAS CITY STREET, SUITE 4, RAVENHILL, SD 57701
PHONE: (605) 348-0538 FAX: (605) 348-0545 WWW.DREAMDESIGNING.COM

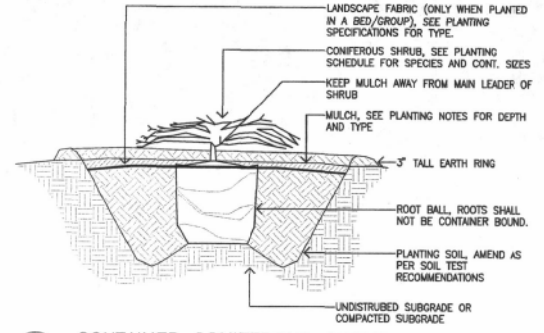
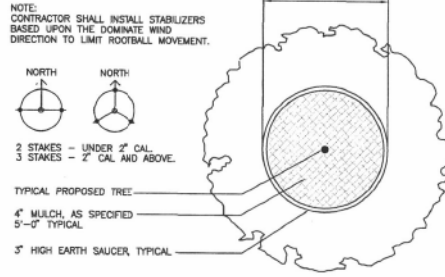
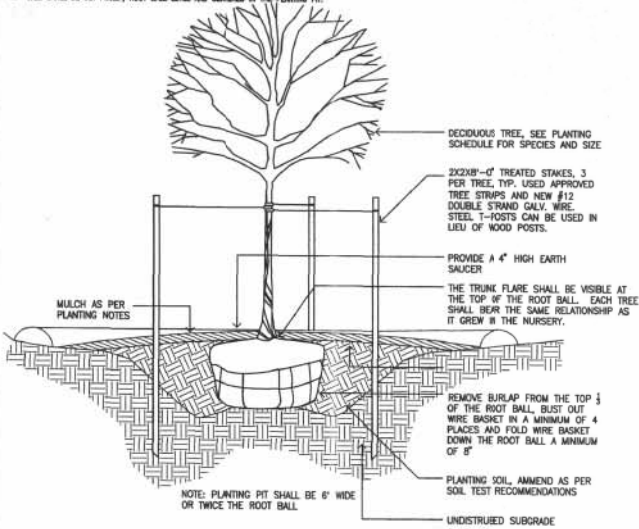
**GATEWAY BUSINESS PARK SUBDIVISION
CAMBRIA HOTEL**



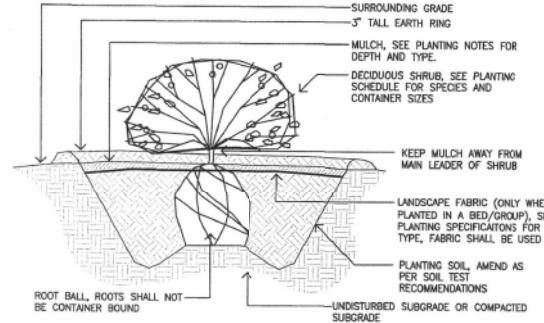
Sheet Name: _____
PHASE I FINAL PCD PLANTING PLAN

10PD052

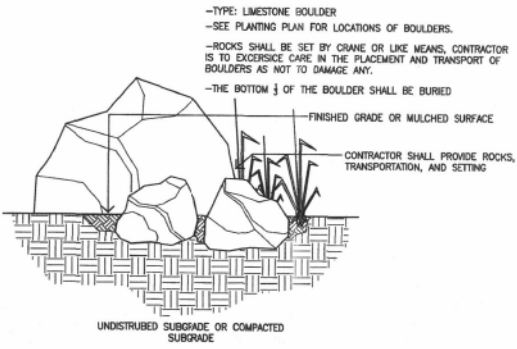
- NOTE:
1. A 6" DIAMETER BLACK DRAINAGE PIPE (1/2" DIA) SHALL BE PLACED AROUND THE TRUNK TO A HEIGHT OF 36"
 2. WOOD STAKES USED FOR GUY WIRES SHALL NOT CONTAIN HEAVY METAL COPPER ARSENATE (COA)
 3. THE PLANTING PIT SHALL BE A MINIMUM 1/3 THE DEPTH OF THE ROOT BALL AND AT A MINIMUM TWICE THAT OF THE ROOT BALL'S DIAMETER.
 4. THE PLANTING SOIL SHALL BE FREE OF ALL CONSTRUCTION MATERIAL, CONCRETE, AND ROCKS GREATER THAN 2" DIAMETER
 5. TREE SHALL BE SET PLUMB, ROOT BALL LEVEL AND CENTERED IN THE PLANTING PIT.



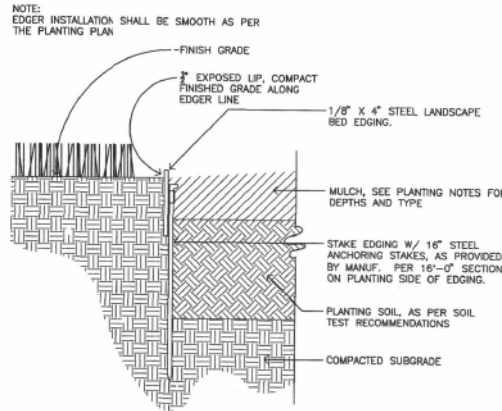
3 CONTAINER CONIFEROUS SHRUB
SCALE: 1/2" = 1'-0"
TYPICAL PLANTING DETAIL



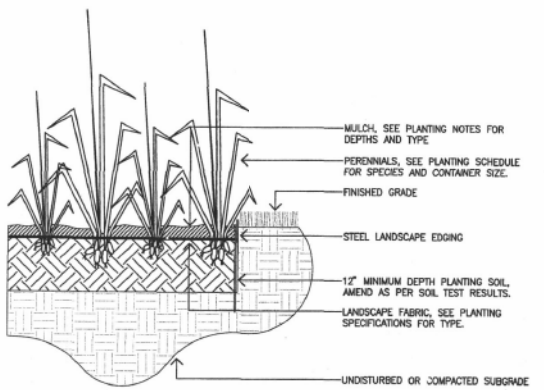
4 CONTAINER DECIDUOUS SHRUB
SCALE: 1/2" = 1'-0"
PLANTING AND STAKING DETAIL



5 LANDSCAPE BOULDER SETTING
NO SCALE
TYPICAL DETAIL



6 STEEL LANDSCAPE EDGING
3/4" = 1'-0"
TYPICAL SECTION



7 PERENNIAL BED PLANTING
NOT TO SCALE
TYPICAL PLANTING DETAIL

Submittals:

Revisions:

Internal Job No: 10-0528
Designed By: MEB
Drawn By: PMW

Surveyed By: RENNER
Survey Date: 8/11/2010

PROFESSIONAL ENGINEER
REG. NO. 8572
GREGORY T. BARRETT
GREGORY T. BARRETT & ASSOCIATES
100 SOUTH DAVENPORT
DES MOINES, IA 50319
85 05 1

DREAM DESIGN INTERNATIONAL, INC.
ENGINEERING, LANDSCAPE ARCHITECTURE,
LAND PLANNING, CONSTRUCTION ADMINISTRATION
928 KANSAS CITY, MISSOURI 64101
PHONE: (603) 348-0538 FAX: (603) 348-0545 WWW.DREAMDESIGNINC.COM

**GATEWAY BUSINESS PARK SUBDIVISION
CAMBRIA HOTEL**

Sheet Name: PLANTING DETAILS

Sheet Number: **L3** of **34**