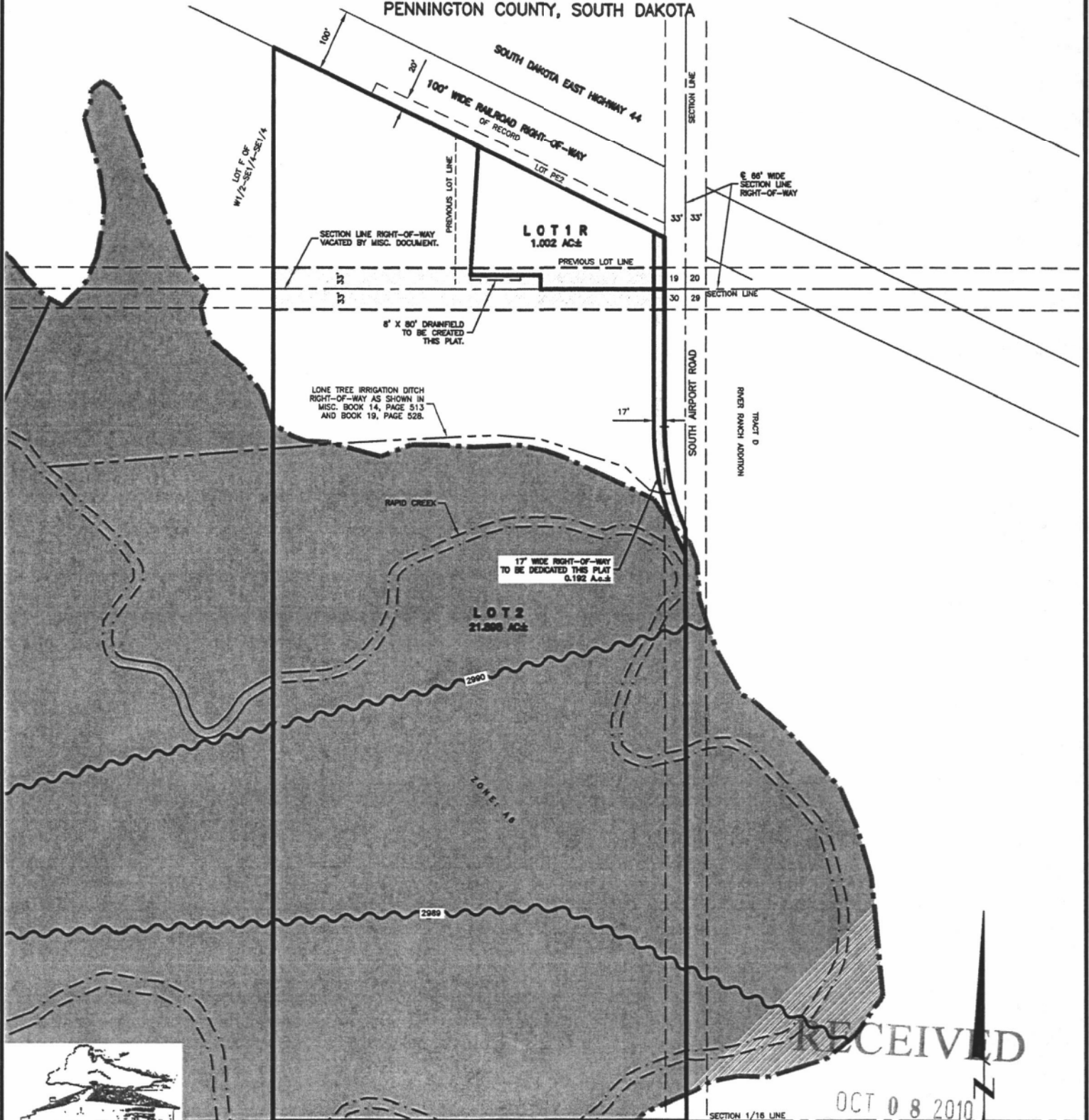


PLAT OF LOTS 1R AND LOT 2 OF HEAVLIN NO. 2 ADDITION

(formerly Lot 1 of Heavlin No. 2 Addition, Portion of SE1/4 of the SE1/4 of the SE1/4 of Section 19 and the E1/2 of the NE1/4 of the NE1/4 of Section 30)

LOCATED IN THE SE1/4 OF THE SE1/4 OF SECTION 19 AND
IN THE E1/2 OF THE NE1/4 OF THE NE1/4 OF SECTION 30

T1N, R9E, BHM,
PENNINGTON COUNTY, SOUTH DAKOTA



RECEIVED

OCT 08 2010



RENNER & ASSOCIATES, LLC.

616 Sixth St. * Rapid City, SD 57701 * 605/721-7310
FAX: 605/721-7313 * E-MAIL: Gary@RennerAssoc.com
* Spearfish 605/717-0016 *

Rapid City Growth
Management Department