

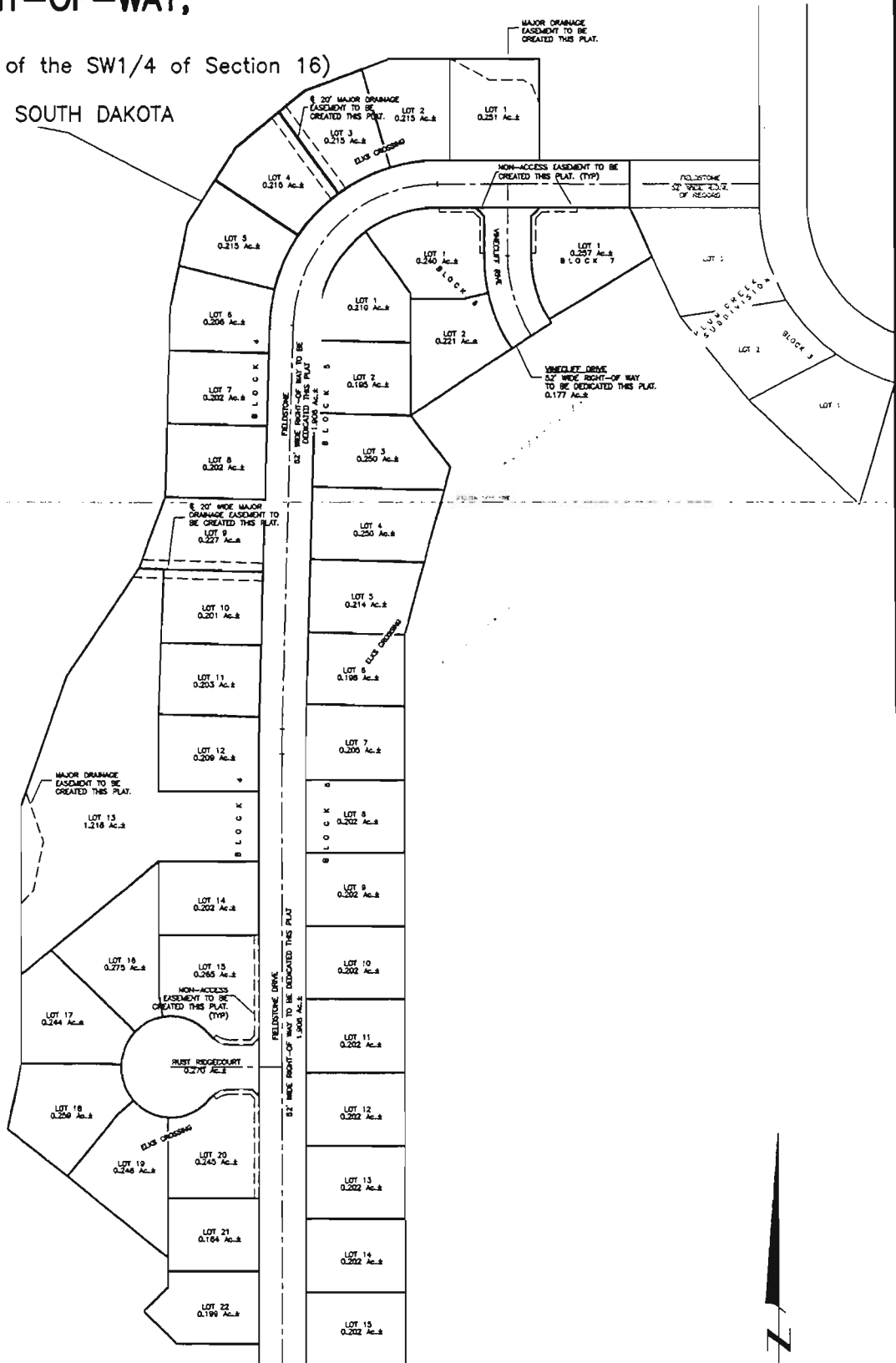
PLAT OF 10PD067

# LOTS 1-22 OF BLOCK 4, LOTS 1-15 OF BLOCK 5, LOTS 1-2 OF BLOCK 6, LOT 1 OF BLOCK 7, RUST RIDGE COURT RIGHT-OF-WAY, FIELDSTONE DRIVE RIGHT-OF-WAY, AND VINECLIFF DRIVE RIGHT-OF-WAY, ELKS CROSSING

(formerly a portion of the E1/2 of the SW1/4 of Section 16)

SECTION 16, T1N, R8E, BHM

RAPID CITY, PENNINGTON COUNTY, SOUTH DAKOTA



CITY HALL 1903

## Renner & Associates, LLC.

616 Sixth St. \* Rapid City, SD 57701 \* 605/721-7310

FAX: 605/721-7313 \* E-MAIL: Gary@RennerAssoc.com

\* Spearfish 605/717-0016 \*

N.T.S.