

FEWÜEH

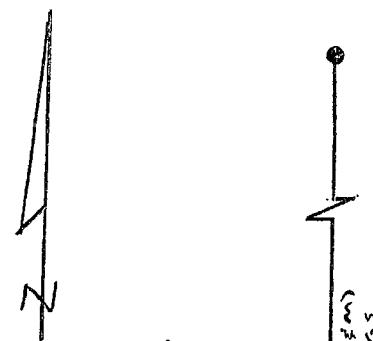
PLOT PLAN FOR PROPOSED GARAGE ON  
TRACT 1 OF KOVARIK SUBDIVISION,  
Rapid City, Pennington County, South Dakota

RECEIVED

SEP 24 2010

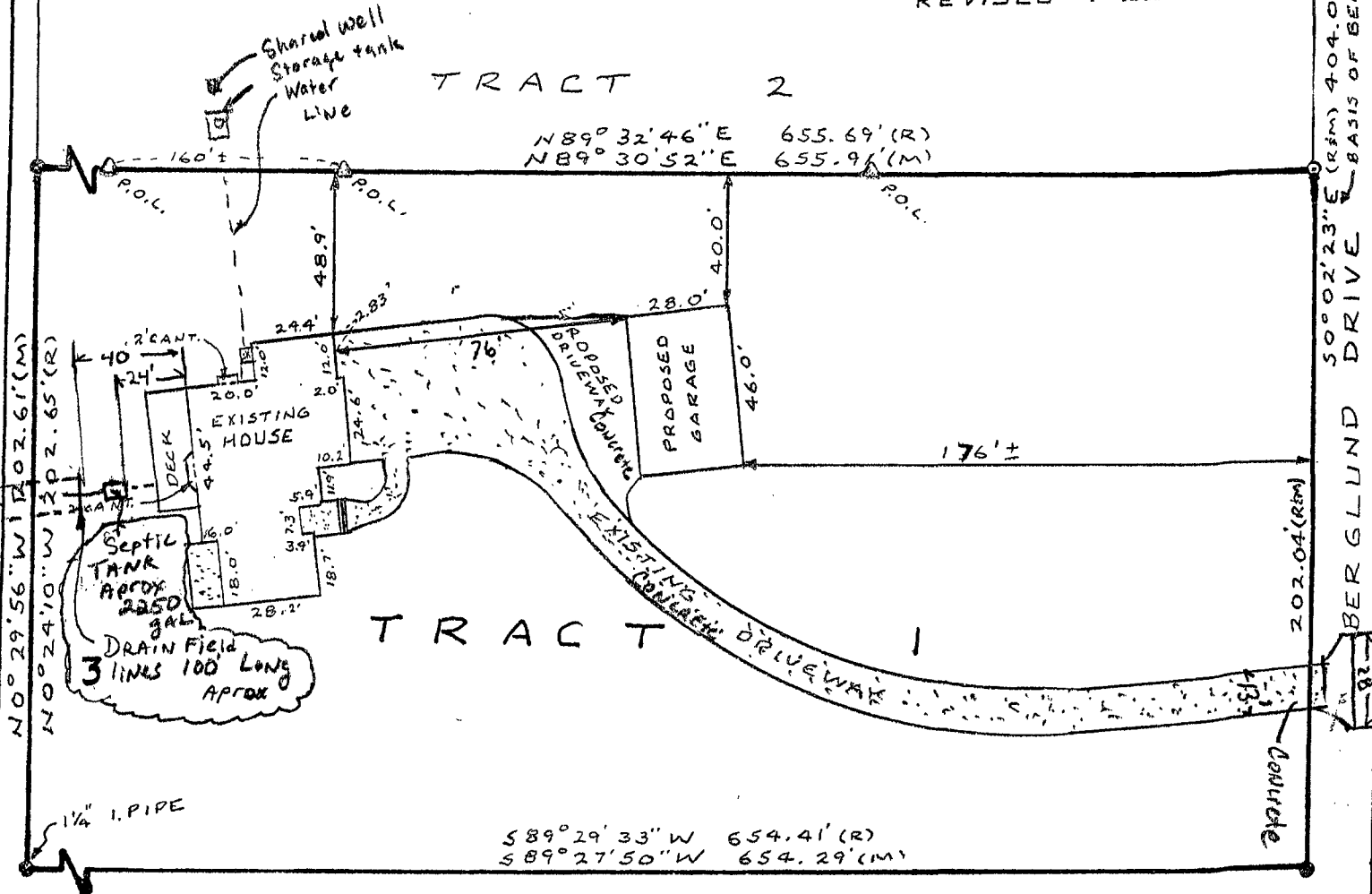
Rapid City Growth  
Management Department

SCALE 1"=50'  
REVISED 9-22-10



TRACT 2

N 89° 32' 46" E 655.69' (R)  
N 89° 30' 52" E 655.91' (M)



LEGEND:

- ⊙ Set 5/8" rebar with survey cap marked "HEALD 2199"
- Found survey monument ( rebar with survey cap marked "2652" unless otherwise noted).