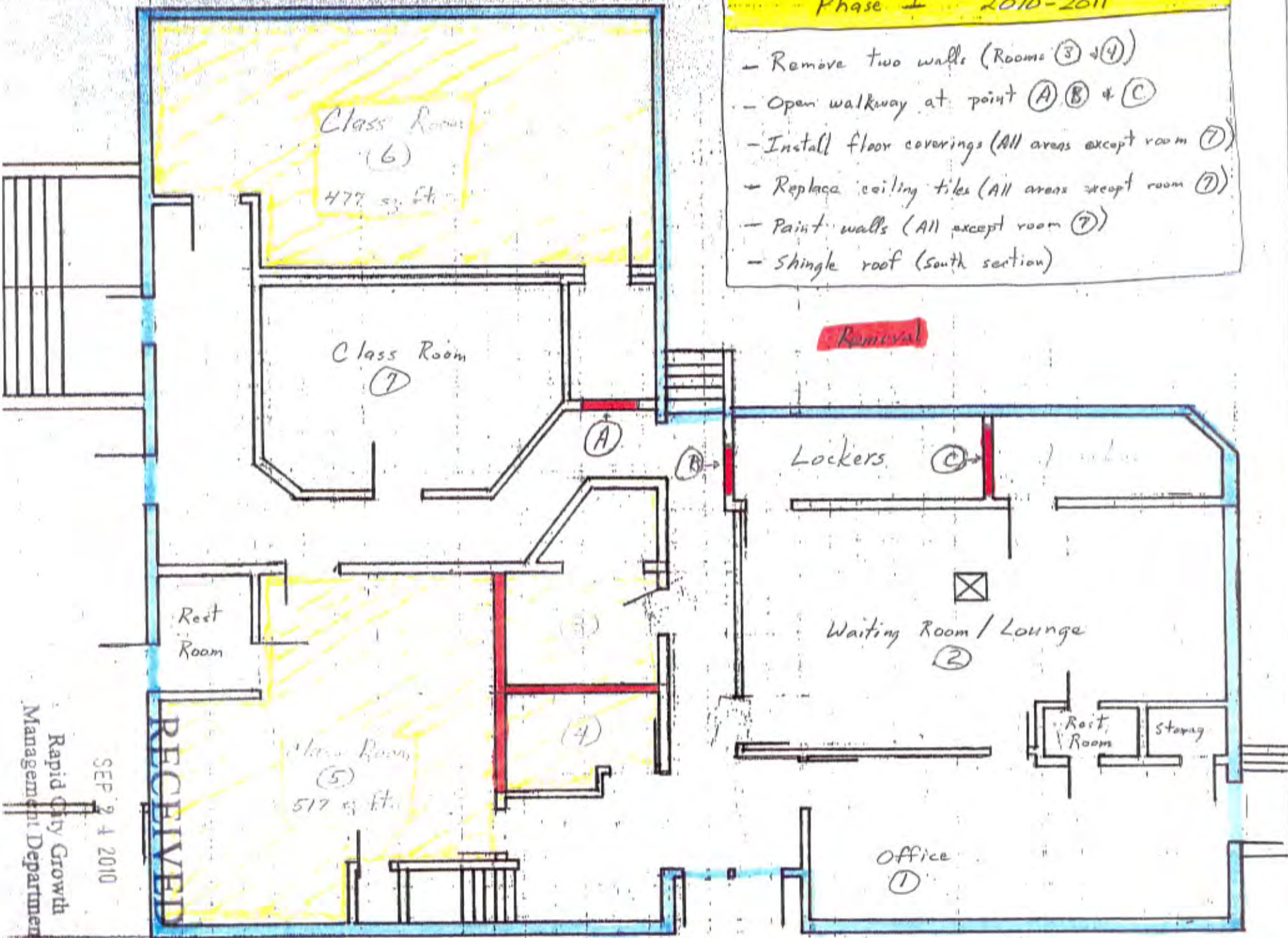


- Phase I 2010-2011**
- Remove two walls (Rooms ③ & ④)
 - Open walkway at point A, B & C
 - Install floor coverings (All areas except room ⑦)
 - Replace ceiling tiles (All areas except room ⑦)
 - Paint walls (All except room ⑦)
 - Shingle roof (south section)



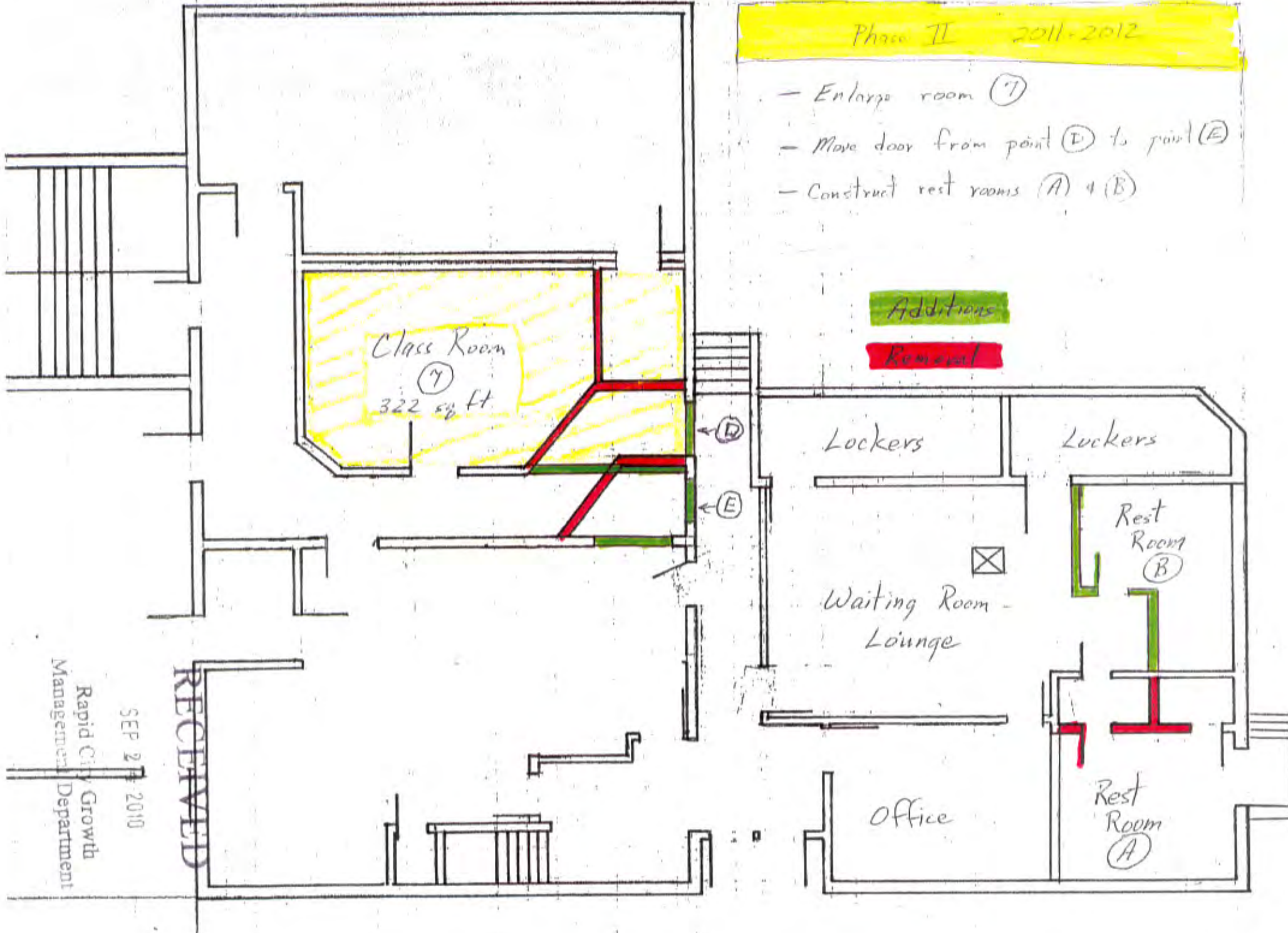
RECEIVED
 SEP 24 2010
 Rapid City Growth
 Management Department

Phase II 2011-2012

- Enlarge room (7)
- Move door from point (D) to point (E)
- Construct rest rooms (A) & (B)

Additions

Removal



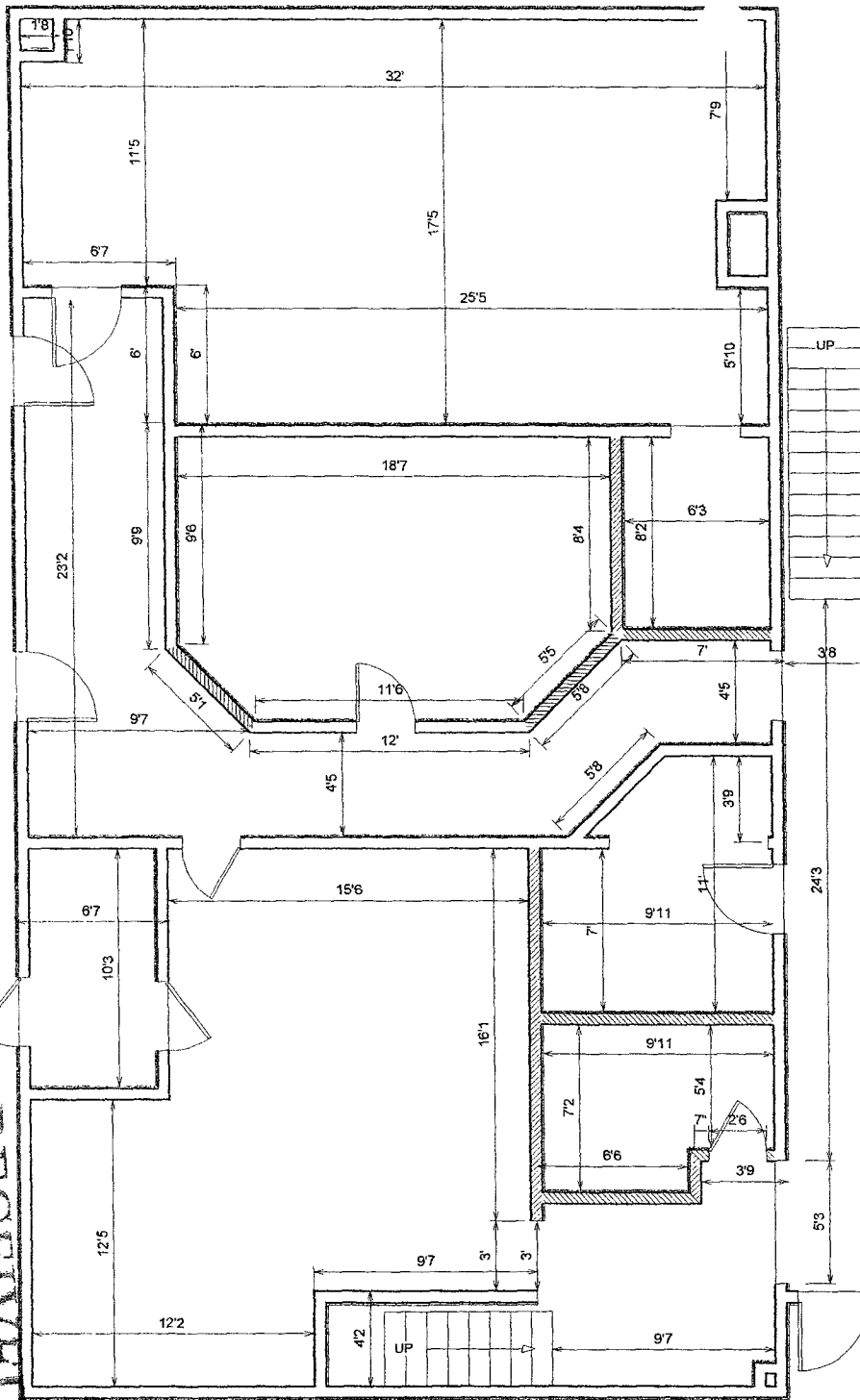
SEP 27 2010
 Rapid City Growth
 Management Department

RECEIVED

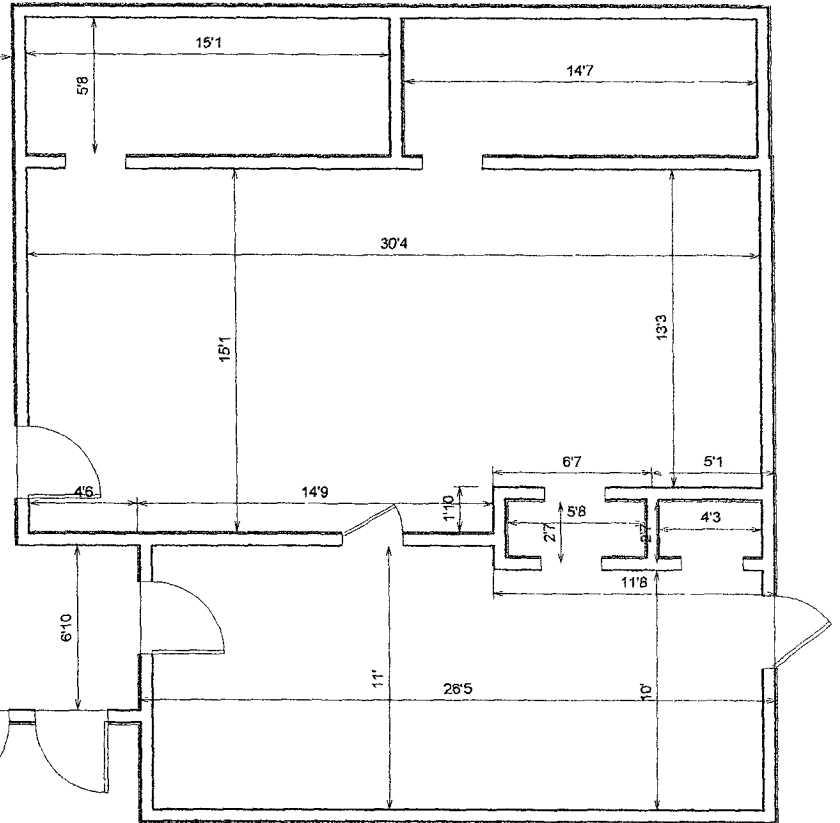
RECEIVED

SEP 24 2010

Rapid City Growth
Management Department



1/8"=1'



LIVING AREA
2978 sq ft