

1. The Contractor is specifically cautioned that the location and/or direction of existing utilities as shown on this plan is based on the records and field investigation. The Contractor shall be responsible for the location and/or direction of existing utilities as shown on this plan. The Contractor shall be responsible for the location and/or direction of existing utilities as shown on this plan.
2. Existing utility lines shall be marked with reflective paint and numbered in accordance with the following: 1. Gas 2. Electric 3. Sewer 4. Storm Sewer 5. Water 6. Telephone 7. Cable TV 8. Other.
3. All utility lines shall be marked with reflective paint and numbered in accordance with the following: 1. Gas 2. Electric 3. Sewer 4. Storm Sewer 5. Water 6. Telephone 7. Cable TV 8. Other.
4. All utility lines shall be marked with reflective paint and numbered in accordance with the following: 1. Gas 2. Electric 3. Sewer 4. Storm Sewer 5. Water 6. Telephone 7. Cable TV 8. Other.
5. All utility lines shall be marked with reflective paint and numbered in accordance with the following: 1. Gas 2. Electric 3. Sewer 4. Storm Sewer 5. Water 6. Telephone 7. Cable TV 8. Other.
6. All utility lines shall be marked with reflective paint and numbered in accordance with the following: 1. Gas 2. Electric 3. Sewer 4. Storm Sewer 5. Water 6. Telephone 7. Cable TV 8. Other.
7. All utility lines shall be marked with reflective paint and numbered in accordance with the following: 1. Gas 2. Electric 3. Sewer 4. Storm Sewer 5. Water 6. Telephone 7. Cable TV 8. Other.
8. All utility lines shall be marked with reflective paint and numbered in accordance with the following: 1. Gas 2. Electric 3. Sewer 4. Storm Sewer 5. Water 6. Telephone 7. Cable TV 8. Other.
9. All utility lines shall be marked with reflective paint and numbered in accordance with the following: 1. Gas 2. Electric 3. Sewer 4. Storm Sewer 5. Water 6. Telephone 7. Cable TV 8. Other.
10. All utility lines shall be marked with reflective paint and numbered in accordance with the following: 1. Gas 2. Electric 3. Sewer 4. Storm Sewer 5. Water 6. Telephone 7. Cable TV 8. Other.
11. All utility lines shall be marked with reflective paint and numbered in accordance with the following: 1. Gas 2. Electric 3. Sewer 4. Storm Sewer 5. Water 6. Telephone 7. Cable TV 8. Other.
12. All utility lines shall be marked with reflective paint and numbered in accordance with the following: 1. Gas 2. Electric 3. Sewer 4. Storm Sewer 5. Water 6. Telephone 7. Cable TV 8. Other.
13. All utility lines shall be marked with reflective paint and numbered in accordance with the following: 1. Gas 2. Electric 3. Sewer 4. Storm Sewer 5. Water 6. Telephone 7. Cable TV 8. Other.
14. All utility lines shall be marked with reflective paint and numbered in accordance with the following: 1. Gas 2. Electric 3. Sewer 4. Storm Sewer 5. Water 6. Telephone 7. Cable TV 8. Other.
15. All utility lines shall be marked with reflective paint and numbered in accordance with the following: 1. Gas 2. Electric 3. Sewer 4. Storm Sewer 5. Water 6. Telephone 7. Cable TV 8. Other.
16. All utility lines shall be marked with reflective paint and numbered in accordance with the following: 1. Gas 2. Electric 3. Sewer 4. Storm Sewer 5. Water 6. Telephone 7. Cable TV 8. Other.
17. All utility lines shall be marked with reflective paint and numbered in accordance with the following: 1. Gas 2. Electric 3. Sewer 4. Storm Sewer 5. Water 6. Telephone 7. Cable TV 8. Other.
18. All utility lines shall be marked with reflective paint and numbered in accordance with the following: 1. Gas 2. Electric 3. Sewer 4. Storm Sewer 5. Water 6. Telephone 7. Cable TV 8. Other.
19. All utility lines shall be marked with reflective paint and numbered in accordance with the following: 1. Gas 2. Electric 3. Sewer 4. Storm Sewer 5. Water 6. Telephone 7. Cable TV 8. Other.
20. All utility lines shall be marked with reflective paint and numbered in accordance with the following: 1. Gas 2. Electric 3. Sewer 4. Storm Sewer 5. Water 6. Telephone 7. Cable TV 8. Other.

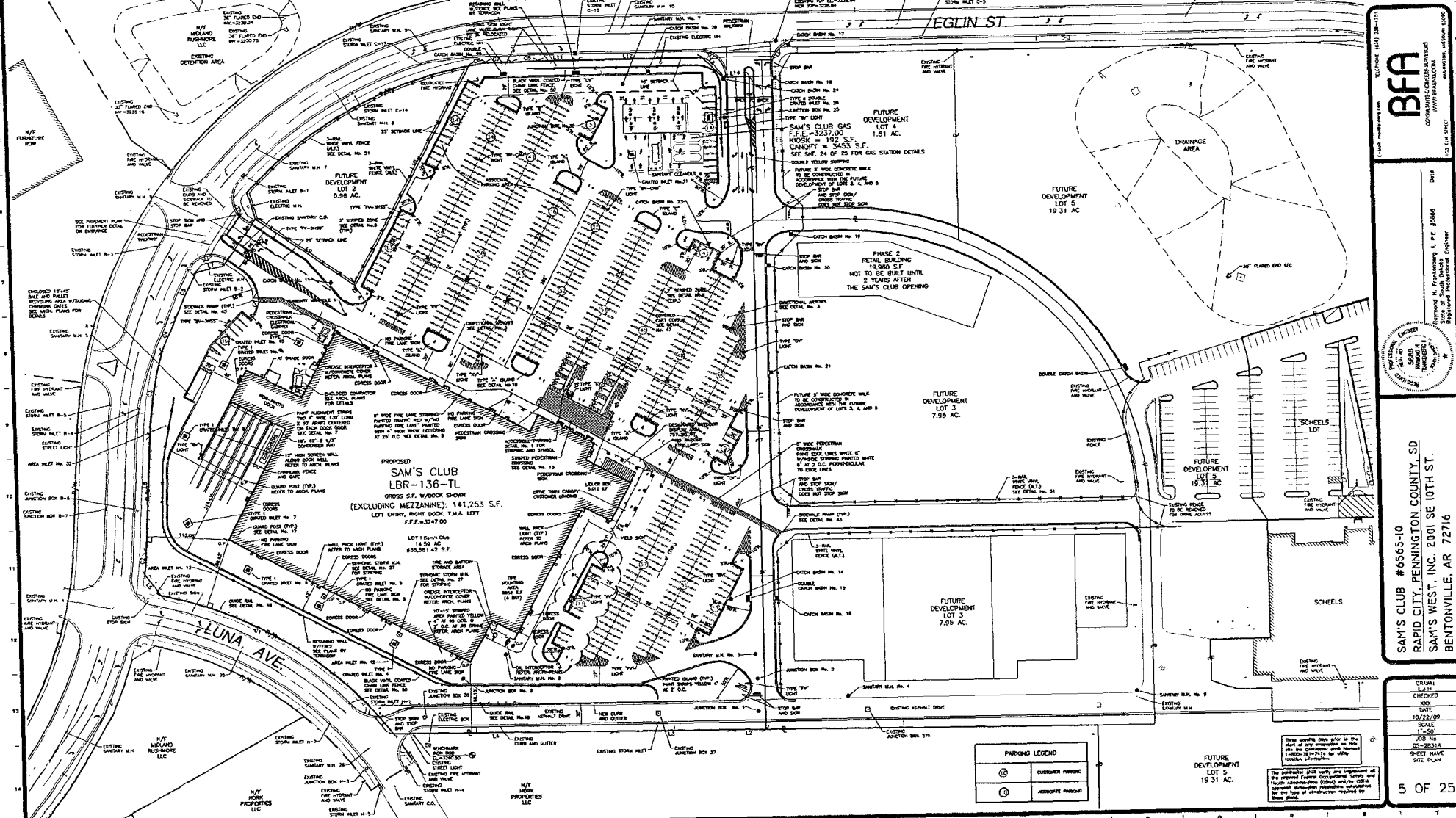
WEST BOUND
INTERSTATE 90
EAST BOUND

Line Table			Curve Table		
Line #	Length	Direction	Curve #	Length	Radius
L1	211.70'	S 0° 0' 0" W	C1	200.00'	100.00'
L2	42.24'	S 89° 57' 23.81" W	C2	100.00'	100.00'
L3	104.10'	S 89° 57' 23.81" W	C3	100.00'	100.00'
L4	104.10'	S 89° 57' 23.81" W	C4	100.00'	100.00'
L5	208.20'	S 89° 57' 23.81" W	C5	100.00'	100.00'
L6	104.10'	S 89° 57' 23.81" W	C6	100.00'	100.00'
L7	208.20'	S 89° 57' 23.81" W	C7	100.00'	100.00'
L8	104.10'	S 89° 57' 23.81" W	C8	100.00'	100.00'
L9	104.10'	S 89° 57' 23.81" W	C9	100.00'	100.00'
L10	104.10'	S 89° 57' 23.81" W	C10	100.00'	100.00'
L11	104.10'	S 89° 57' 23.81" W	C11	100.00'	100.00'
L12	104.10'	S 89° 57' 23.81" W	C12	100.00'	100.00'
L13	104.10'	S 89° 57' 23.81" W	C13	100.00'	100.00'
L14	104.10'	S 89° 57' 23.81" W	C14	100.00'	100.00'



SITE PLAN
SCALE: 1" = 50'
SAM'S CLUB PARKING RATIO
SAM'S CLUB & GAS STATION 4.5 / 1000 SQ FT
BASED ON A TOTAL OF 141,445 S.F. STORE & HOUSK
637 SPACES REQUIRED
MEZZANINE & OUTDOOR DISPLAY 0.25 / 1000 S.F.
BASED ON A TOTAL OF 4,273 S.F.
2 SPACES REQUIRED
TOTAL REQUIRED PARKING = 639 SPACES
TOTAL PROVIDED PARKING = 638 SPACES
ACCESSIBLE PARKING 15 SPACES
3 OF WHICH ARE VAN SPACES
ASSOCIATE PARKING 142 SPACES
CART CORRALS 8 x 16 SPACES

REVISIONS	
1	ADDED BUILDING FOOTPRINT BY AREA PER PAGE 1000, 012, 013, 014, 015, 016, 017, 018, 019, 020, 021, 022, 023, 024, 025, 026, 027, 028, 029, 030, 031, 032, 033, 034, 035, 036, 037, 038, 039, 040, 041, 042, 043, 044, 045, 046, 047, 048, 049, 050, 051, 052, 053, 054, 055, 056, 057, 058, 059, 060, 061, 062, 063, 064, 065, 066, 067, 068, 069, 070, 071, 072, 073, 074, 075, 076, 077, 078, 079, 080, 081, 082, 083, 084, 085, 086, 087, 088, 089, 090, 091, 092, 093, 094, 095, 096, 097, 098, 099, 100, 101, 102, 103, 104, 105, 106, 107, 108, 109, 110, 111, 112, 113, 114, 115, 116, 117, 118, 119, 120, 121, 122, 123, 124, 125, 126, 127, 128, 129, 130, 131, 132, 133, 134, 135, 136, 137, 138, 139, 140, 141, 142, 143, 144, 145, 146, 147, 148, 149, 150, 151, 152, 153, 154, 155, 156, 157, 158, 159, 160, 161, 162, 163, 164, 165, 166, 167, 168, 169, 170, 171, 172, 173, 174, 175, 176, 177, 178, 179, 180, 181, 182, 183, 184, 185, 186, 187, 188, 189, 190, 191, 192, 193, 194, 195, 196, 197, 198, 199, 200, 201, 202, 203, 204, 205, 206, 207, 208, 209, 210, 211, 212, 213, 214, 215, 216, 217, 218, 219, 220, 221, 222, 223, 224, 225, 226, 227, 228, 229, 230, 231, 232, 233, 234, 235, 236, 237, 238, 239, 240, 241, 242, 243, 244, 245, 246, 247, 248, 249, 250, 251, 252, 253, 254, 255, 256, 257, 258, 259, 260, 261, 262, 263, 264, 265, 266, 267, 268, 269, 270, 271, 272, 273, 274, 275, 276, 277, 278, 279, 280, 281, 282, 283, 284, 285, 286, 287, 288, 289, 290, 291, 292, 293, 294, 295, 296, 297, 298, 299, 300, 301, 302, 303, 304, 305, 306, 307, 308, 309, 310, 311, 312, 313, 314, 315, 316, 317, 318, 319, 320, 321, 322, 323, 324, 325, 326, 327, 328, 329, 330, 331, 332, 333, 334, 335, 336, 337, 338, 339, 340, 341, 342, 343, 344, 345, 346, 347, 348, 349, 350, 351, 352, 353, 354, 355, 356, 357, 358, 359, 360, 361, 362, 363, 364, 365, 366, 367, 368, 369, 370, 371, 372, 373, 374, 375, 376, 377, 378, 379, 380, 381, 382, 383, 384, 385, 386, 387, 388, 389, 390, 391, 392, 393, 394, 395, 396, 397, 398, 399, 400, 401, 402, 403, 404, 405, 406, 407, 408, 409, 410, 411, 412, 413, 414, 415, 416, 417, 418, 419, 420, 421, 422, 423, 424, 425, 426, 427, 428, 429, 430, 431, 432, 433, 434, 435, 436, 437, 438, 439, 440, 441, 442, 443, 444, 445, 446, 447, 448, 449, 450, 451, 452, 453, 454, 455, 456, 457, 458, 459, 460, 461, 462, 463, 464, 465, 466, 467, 468, 469, 470, 471, 472, 473, 474, 475, 476, 477, 478, 479, 480, 481, 482, 483, 484, 485, 486, 487, 488, 489, 490, 491, 492, 493, 494, 495, 496, 497, 498, 499, 500, 501, 502, 503, 504, 505, 506, 507, 508, 509, 510, 511, 512, 513, 514, 515, 516, 517, 518, 519, 520, 521, 522, 523, 524, 525, 526, 527, 528, 529, 530, 531, 532, 533, 534, 535, 536, 537, 538, 539, 540, 541, 542, 543, 544, 545, 546, 547, 548, 549, 550, 551, 552, 553, 554, 555, 556, 557, 558, 559, 560, 561, 562, 563, 564, 565, 566, 567, 568, 569, 570, 571, 572, 573, 574, 575, 576, 577, 578, 579, 580, 581, 582, 583, 584, 585, 586, 587, 588, 589, 590, 591, 592, 593, 594, 595, 596, 597, 598, 599, 600, 601, 602, 603, 604, 605, 606, 607, 608, 609, 610, 611, 612, 613, 614, 615, 616, 617, 618, 619, 620, 621, 622, 623, 624, 625, 626, 627, 628, 629, 630, 631, 632, 633, 634, 635, 636, 637, 638, 639, 640, 641, 642, 643, 644, 645, 646, 647, 648, 649, 650, 651, 652, 653, 654, 655, 656, 657, 658, 659, 660, 661, 662, 663, 664, 665, 666, 667, 668, 669, 670, 671, 672, 673, 674, 675, 676, 677, 678, 679, 680, 681, 682, 683, 684, 685, 686, 687, 688, 689, 690, 691, 692, 693, 694, 695, 696, 697, 698, 699, 700, 701, 702, 703, 704, 705, 706, 707, 708, 709, 710, 711, 712, 713, 714, 715, 716, 717, 718, 719, 720, 721, 722, 723, 724, 725, 726, 727, 728, 729, 730, 731, 732, 733, 734, 735, 736, 737, 738, 739, 740, 741, 742, 743, 744, 745, 746, 747, 748, 749, 750, 751, 752, 753, 754, 755, 756, 757, 758, 759, 760, 761, 762, 763, 764, 765, 766, 767, 768, 769, 770, 771, 772, 773, 774, 775, 776, 777, 778, 779, 780, 781, 782, 783, 784, 785, 786, 787, 788, 789, 790, 791, 792, 793, 794, 795, 796, 797, 798, 799, 800, 801, 802, 803, 804, 805, 806, 807, 808, 809, 810, 811, 812, 813, 814, 815, 816, 817, 818, 819, 820, 821, 822, 823, 824, 825, 826, 827, 828, 829, 830, 831, 832, 833, 834, 835, 836, 837, 838, 839, 840, 841, 842, 843, 844, 845, 846, 847, 848, 849, 850, 851, 852, 853, 854, 855, 856, 857, 858, 859, 860, 861, 862, 863, 864, 865, 866, 867, 868, 869, 870, 871, 872, 873, 874, 875, 876, 877, 878, 879, 880, 881, 882, 883, 884, 885, 886, 887, 888, 889, 890, 891, 892, 893, 894, 895, 896, 897, 898, 899, 900, 901, 902, 903, 904, 905, 906, 907, 908, 909, 910, 911, 912, 913, 914, 915, 916, 917, 918, 919, 920, 921, 922, 923, 924, 925, 926, 927, 928, 929, 930, 931, 932, 933, 934, 935, 936, 937, 938, 939, 940, 941, 942, 943, 944, 945, 946, 947, 948, 949, 950, 951, 952, 953, 954, 955, 956, 957, 958, 959, 960, 961, 962, 963, 964, 965, 966, 967, 968, 969, 970, 971, 972, 973, 974, 975, 976, 977, 978, 979, 980, 981, 982, 983, 984, 985, 986, 987, 988, 989, 990, 991, 992, 993, 994, 995, 996, 997, 998, 999, 1000



BFA
CONSULTANTS-ENGINEERS-ARCHITECTS
1400 W. 10TH ST.
BENTONVILLE, AR 72716
TELEPHONE (407) 238-1131
FAX (407) 238-1132
WWW.BFAENGINEERS.COM

SAM'S CLUB #6565-10
RAPID CITY, PENNINGTON COUNTY, SD
SAM'S WEST, INC. 2001 SE 10TH ST.
BENTONVILLE, AR 72716

Prepared by: Pennington & P.C. #0089
Registered Professional Engineer

DATE: _____

PARKING LEGEND	
(Symbol)	OUTDOOR PARKING
(Symbol)	ASSOCIATE PARKING

DATE: _____
SCALE: 1" = 50'
SHEET NAME: SITE PLAN
5 OF 25