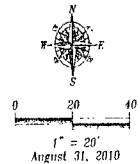
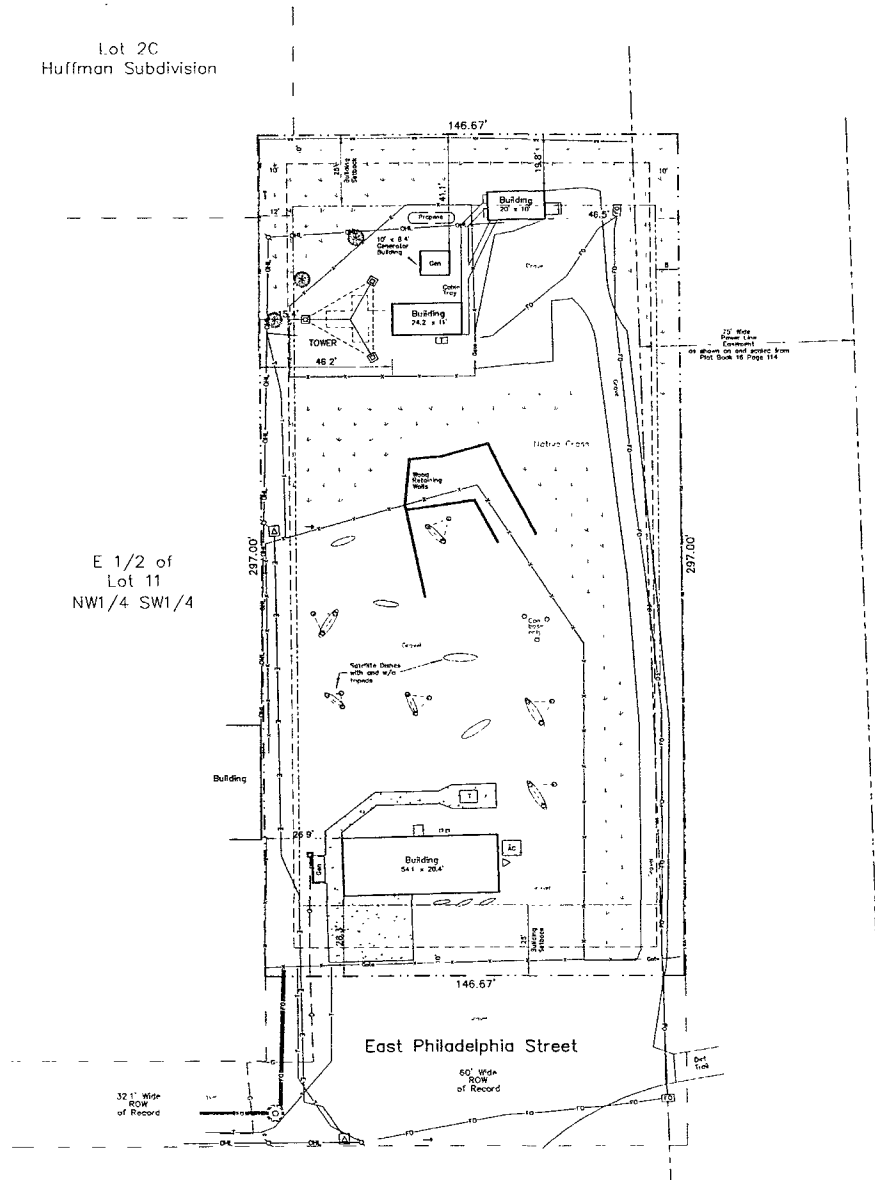


E 1/2 of
Lot 11
NW1/4 SW1/4



SURVEYOR'S NOTES

Utilities shown are from visual inspection, sketches provided by individual service providers and Utility Locates performed by South Dakota One Call, Ticket Number 102 310 558. The actual location of utilities and service lines may vary from the information shown herein. We assume no liability for utilities and services that are not marked or are incorrectly defined by utility locators.

NOTE: Minimum Building Setback lines are called for and shown graphically on the plat of the subject property as shown herein. The northernmost building is not in compliance with the plotted setback.

NOTE: Utility Corridor 10' on each side of all lot lines as called for in the plat of the subject property are shown herein.

LEGEND

- = Utility Pole
- = Day Wire
- ⊕ = Electric Transformer
- ⊞ = Fiber Optic Vault
- ⊞ = Fiber Optic Manhole Vault
- ⊞ = Telecom Vault
- ⊞ = Telecommunications Pedestal
- ⊞ = Natural Gas Meter
- = Chain Link Fence
- = Birded Wire Fence
- = Underground Electric
- = Overhead Utility Line
- = Underground Telephone
- = Fiber Optic Line
- = Metal Gas Line
- ⊙ = Tree (Deciduous)

LANDSCAPE

⊙ = Tree (Deciduous - Small)	J # 500 - 1500
Grass (x 10)	2,002 S Y = 20,022

Total Landscape Points = 21,527

Lot SF	= 43,434 SF
Building SF.	= 1,655 SF
Points Required	= 41,779 SF

Fisk Land Surveying & Consulting Engineers, Inc.
 1501 W. 13th St., Suite 105
 Rapid City, South Dakota 57705
 (605) 348-1535 (Fax) (605) 341-1172 (Cell)
 info@fiskland.com



The information herein is a position, matter, and specific to the date listed and purpose as stated.
 We warrant no guarantee or approval or implied in any matter for any other purpose at any time, except as stated.

Site Plan
 Lot 1 of Huffman Subdivision located in the NW1/4 SW1/4 of Section 32, T2N, R8E, B1M, Rapid City, Pennington County, South Dakota

Surveyed by	WT
Date	8/25/10
Drawn by	RWF
Date	8/31/10
Checked by	JF
Revisions	

Project No.
10-08-06-A

Site Plan

