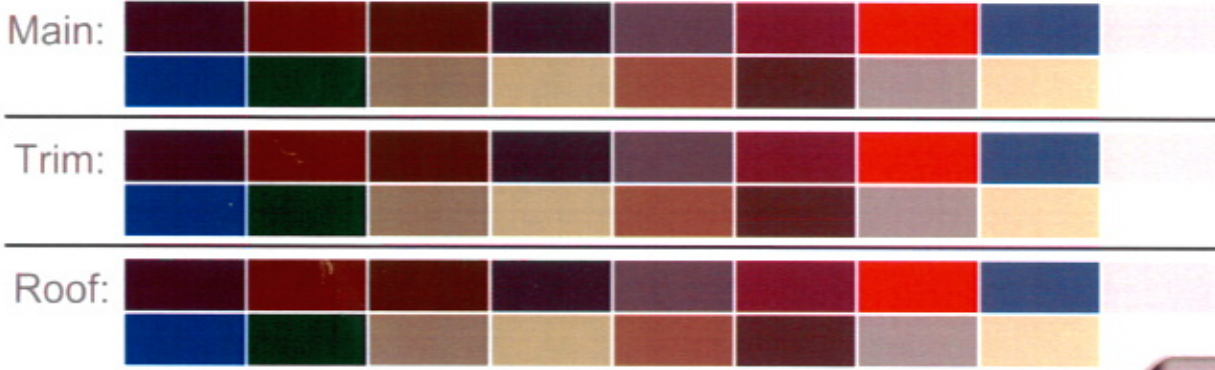


Available Colors



- Black
- Burgundy
- Brown
- Slate
- Dark Gray
- Barn Red
- Bright Red
- Ocean Blue
- White
- Blue
- Green
- Sand
- Stone
- Tan
- Buckskin
- Gray
- Ivory

"CLICK" ON COLORS



- Garage Doors Available In**
- White
  - Brown
  - Almond
  - Sandtone
  - Tera-Bronze

Print

**Colors are for contrast comparison only. Color shades may appear differently in print and on different computer monitors. Color charts and samples available at our showroom.**

# Michels

## Post Frame Buildings

[www.michelspostframebuildings.com](http://www.michelspostframebuildings.com)

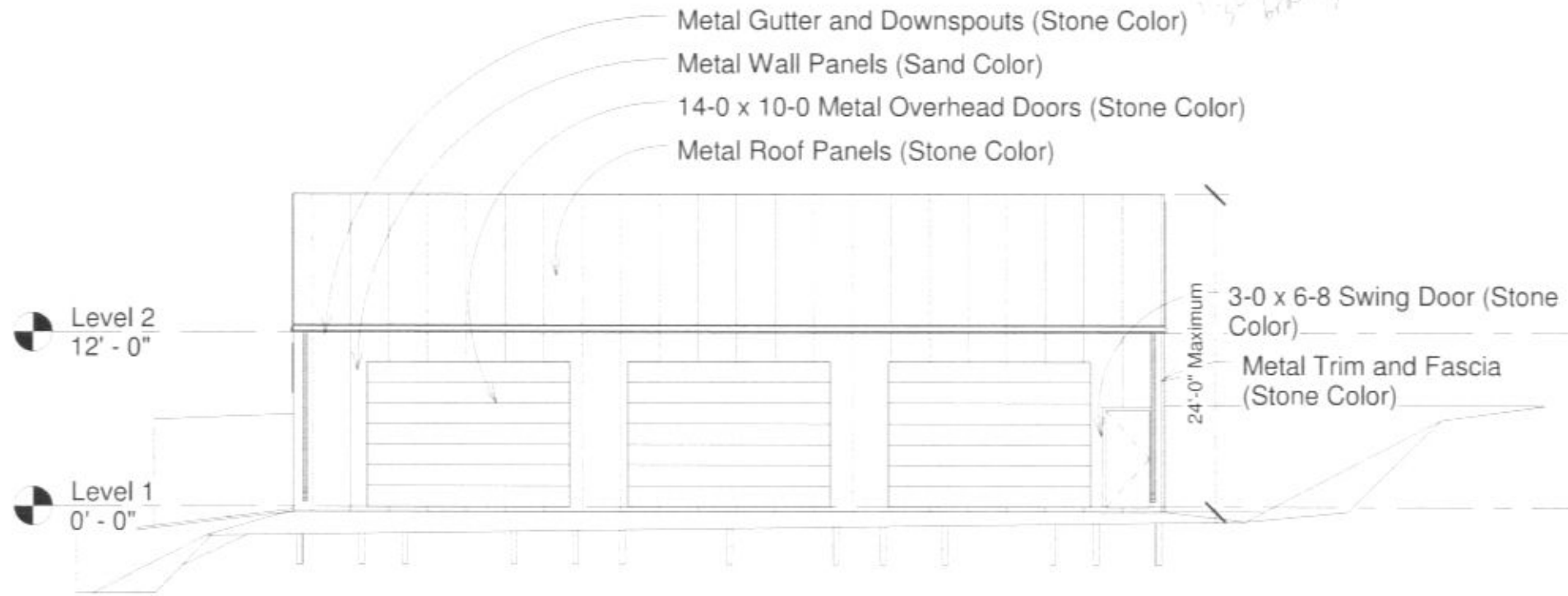
Black Hawk, SD \* I-90 Exit 48

1-800-899-8972 \* 605-787-4967

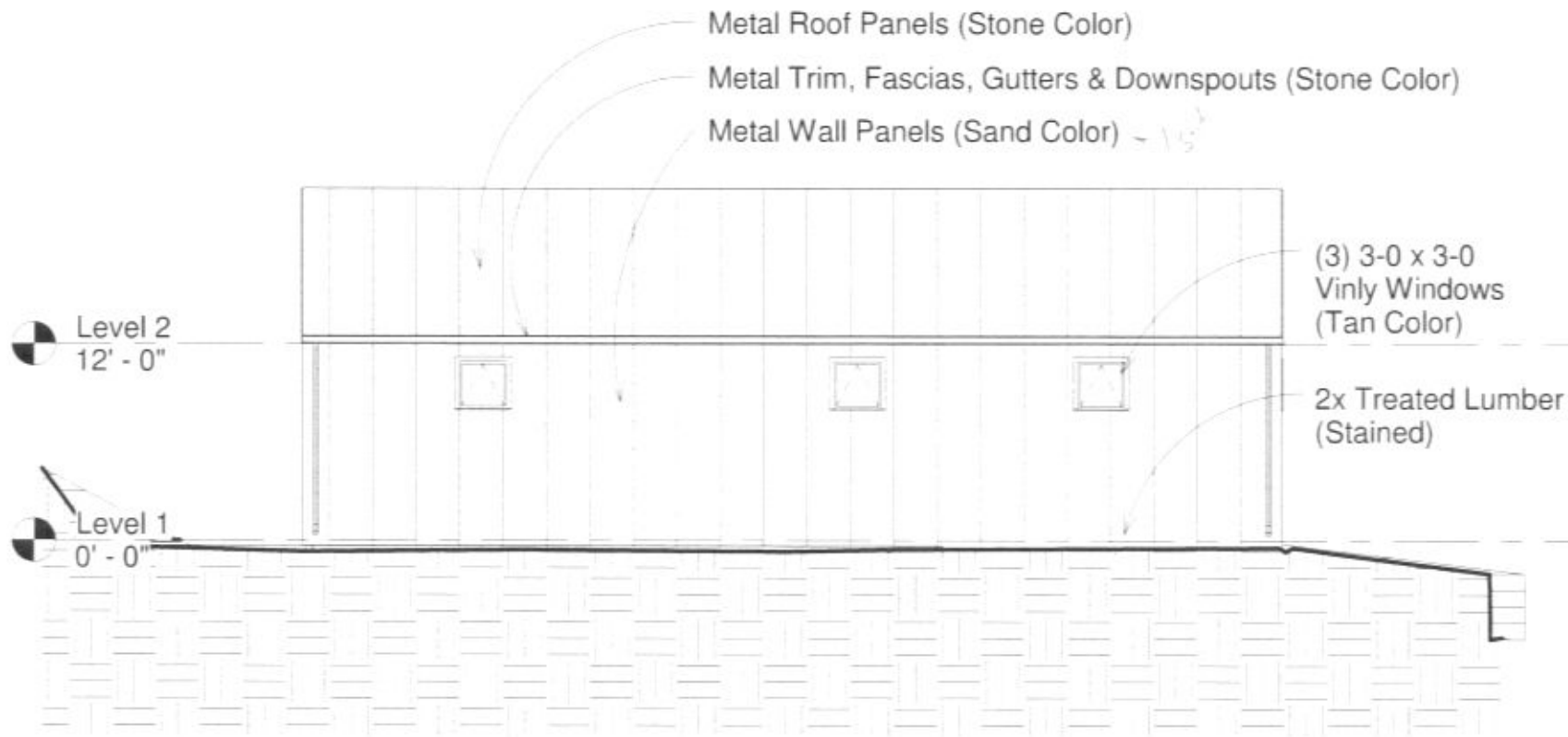
RECEIVED

SEP 29 2010

Rapid City Growth  
Management Department



1 East Elevation  
 3/32" = 1'-0"



2 West Elevation  
 3/32" = 1'-0"

**RECEIVED**

SEP 29 2010

Rapid City Growth  
 Management Department

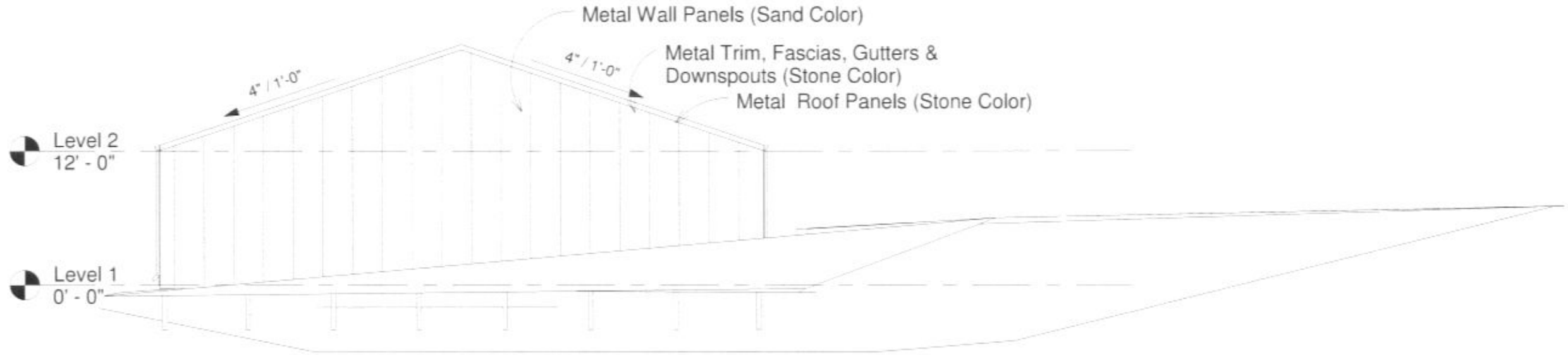
Revisions	
No.	Description

Exterior Building  
 Elevations

Warehouse  
 Rapid City, SD

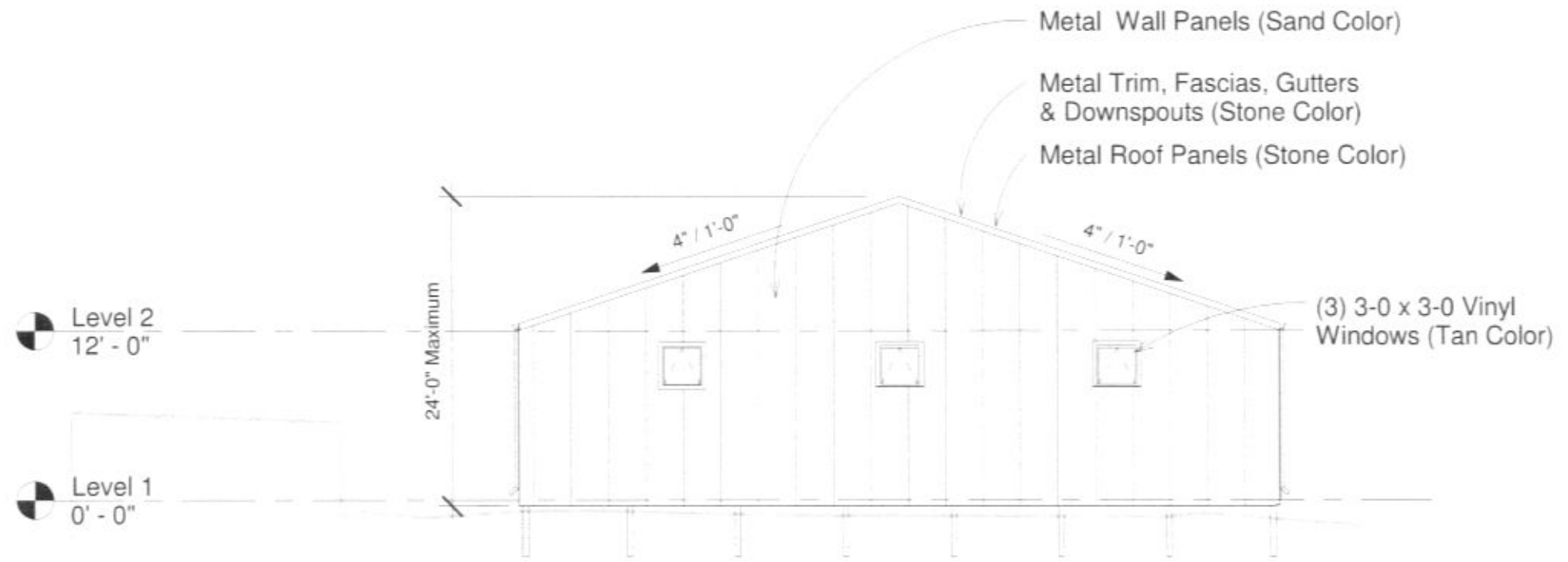
9.29.10

A2.1



1 North Elevation  
3/32" = 1'-0"

**RECEIVED**  
SEP 29 2010  
Rapid City Growth  
Management Department



2 South Elevation  
3/32" = 1'-0"

Revisions	No.	Date	Description

Exterior Building  
Elevations

Warehouse  
Rapid City, SD

9.29.10

A2.2