

PLAT OF TRACT A, PRAIRIE MEADOWS SUBDIVISION

(formerly a portion of "Government" Lot 4 of Section 18)
LOCATED IN "GOVERNMENT" LOT 4,
SECTION 18, T2N, R8E, B.H.M.,
RAPID CITY, PENNINGTON COUNTY, SOUTH DAKOTA

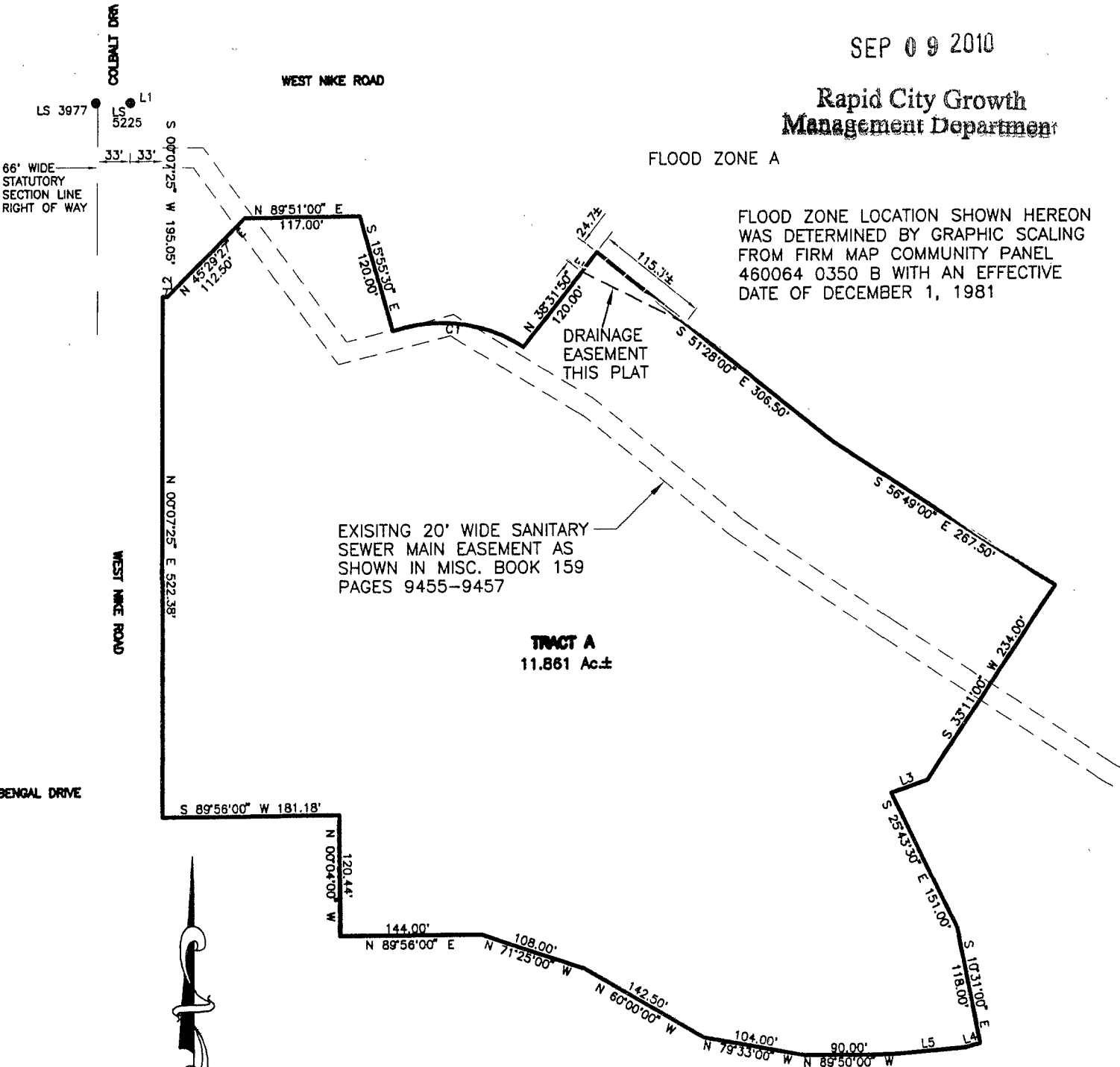
RECEIVED

SEP 09 2010

**Rapid City Growth
Management Department**

FLOOD ZONE A

FLOOD ZONE LOCATION SHOWN HEREON
WAS DETERMINED BY GRAPHIC SCALING
FROM FIRM MAP COMMUNITY PANEL
460064 0350 B WITH AN EFFECTIVE
DATE OF DECEMBER 1, 1981



TRACT A
11.861 Ac±



SEPTEMBER 7, 2010
N.T.S.