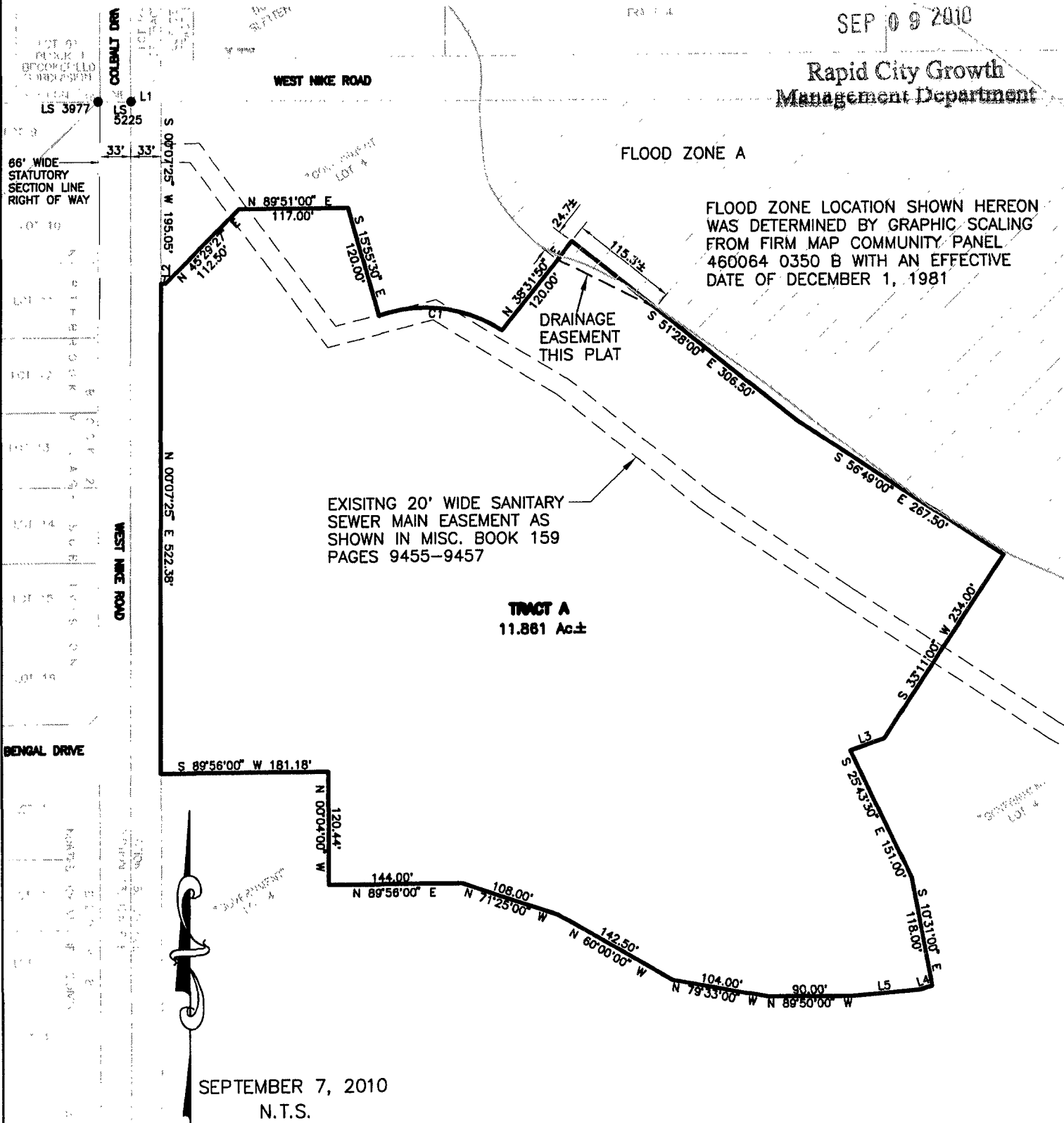


PLAT OF
TRACT A,
PRAIRIE MEADOWS SUBDIVISION
 (formerly a portion of "Government" Lot 4 of Section 18)
 LOCATED IN "GOVERNMENT" LOT 4,
 SECTION 18, T2N, R8E, B.H.M.,
 RAPID CITY, PENNINGTON COUNTY, SOUTH DAKOTA

RECEIVED

SEP 09 2010

Rapid City Growth
Management Department



SEPTEMBER 7, 2010
N.T.S.