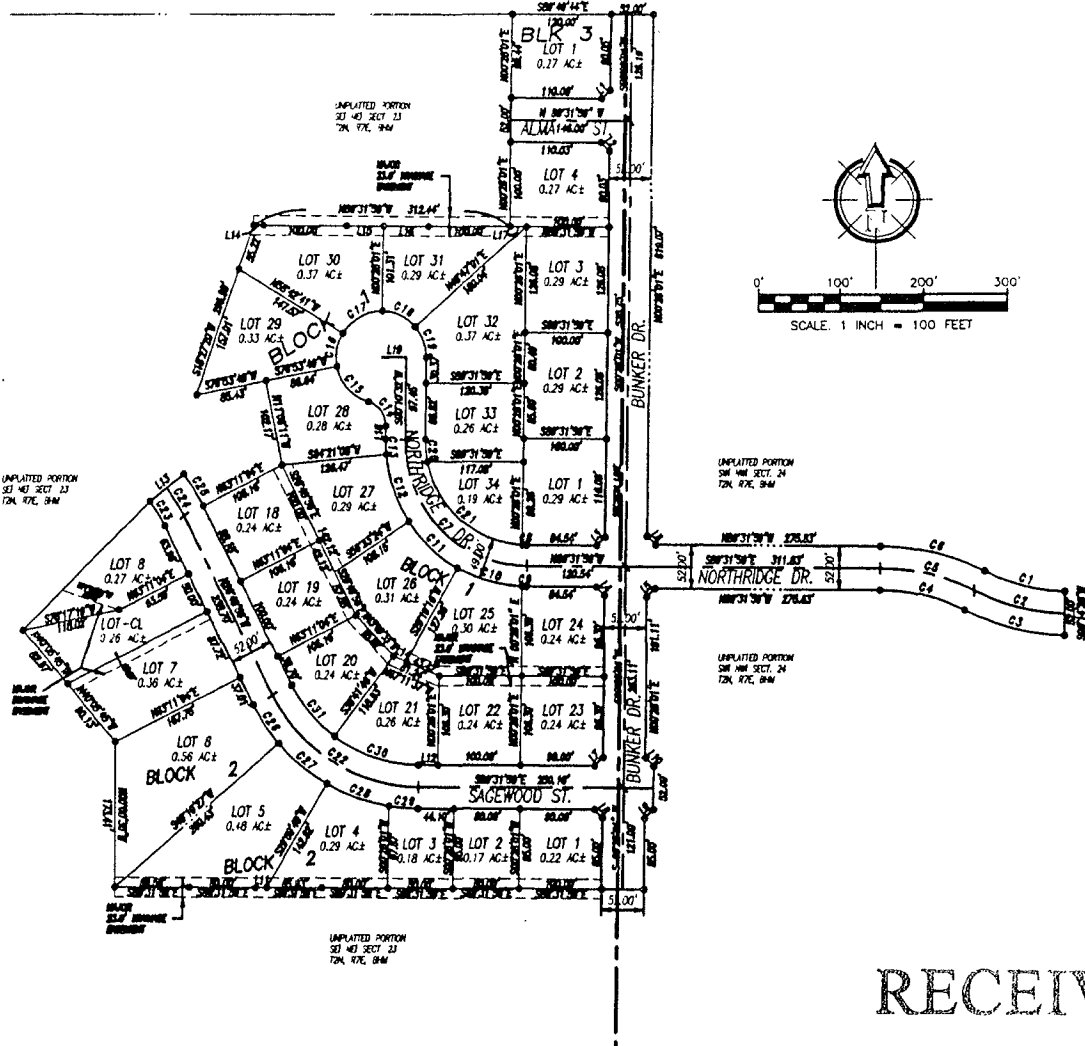


LOT 1-4 & LOTS 18-34, BLK 1; LOTS 1-8 AND LOT-CL, BLK 2; LOT 1, BLK 3;
 LOCATED IN THE S7 NE1 SECTION 23 AND IN THE
 SW1 NW1 IN SECTION 24, T2N, R7E, B.H.M.,
 CITY OF RAPID CITY, PENNINGTON COUNTY, SOUTH DAKOTA



RECEIVED

SEP 10 2010

Rapid City Growth Management Department

NO	RADIUS	DELTA ANGLE	ARC L	TANGENT	CHORD	DIRECTION	CHORD L
C1	224.00	25°44'24"	100.63	51.18	S 75°52'14" E	99.79	
C2	250.00	25°30'13"	111.28	56.58	S 75°45'08" E	110.36	
C3	276.00	25°44'24"	123.99	63.06	S 75°52'14" E	122.35	
C4	224.00	26°31'57"	103.73	52.81	N 78°18'00" W	102.81	
C5	250.00	26°31'57"	115.77	58.94	S 78°18'00" E	114.74	
C6	276.00	26°31'57"	127.81	65.07	S 78°18'00" E	126.67	
C7	190.00	89°42'51"	234.86	149.24	N 44°40'47" W	211.59	
C8	125.50	02°29'55"	5.46	3.73	N 89°17'11" E	5.46	
C9	174.50	01°47'54"	5.46	2.73	S 89°38'12" E	5.46	
C10	174.50	27°51'41"	82.12	41.39	N 74°12'54" W	81.65	
C11	174.50	27°54'08"	82.44	42.00	S 47°08'40" E	81.68	
C12	174.50	27°57'44"	85.16	43.45	N 19°37'44" W	84.32	
C13	174.50	05°48'24"	17.74	8.89	S 92°44'10" E	17.73	
C14	30.00	73°15'57"	38.54	22.44	S 36°37'28" E	35.34	
C15	55.00	62°19'13"	59.82	33.26	N 47°15'48" W	56.32	
C16	55.00	42°23'50"	40.89	21.33	N 10°05'34" E	39.77	
C17	55.00	59°10'42"	56.81	31.23	N 80°52'40" E	54.32	
C18	55.00	48°18'36"	46.37	24.67	S 65°22'41" E	45.01	
C19	55.00	41°34'28"	39.31	20.68	N 20°26'59" W	39.04	
C20	125.50	12°11'20"	26.70	13.40	N 08°55'28" W	26.65	
C21	125.50	75°01'36"	164.34	86.35	N 49°31'35" W	152.85	
C22	200.00	62°43'02"	218.32	121.88	S 58°10'28" E	208.16	
C23	174.00	11°19'45"	34.41	17.26	N 12°28'49" W	34.35	
C24	200.00	11°19'45"	39.35	19.84	N 12°28'49" W	39.48	
C25	226.00	11°19'45"	44.59	22.42	N 12°28'49" W	44.51	
C26	226.00	14°00'36"	55.26	27.77	N 37°49'14" W	55.72	
C27	226.00	19°10'59"	75.64	38.18	S 50°14'52" E	75.29	
C28	226.00	20°23'21"	80.42	40.64	S 70°11'52" E	80.30	
C29	226.00	39°08'27"	36.06	18.07	N 84°57'48" W	36.32	
C30	174.00	36°13'44"	71.02	36.32	N 71°25'07" W	108.30	
C31	174.00	28°29'18"	80.44	40.25	N 40°03'35" W	79.73	

NUMBER	DIRECTION	DISTANCE
L1	N 45°28'01" E	14.14'
L2	S 44°31'58" E	14.14'
L3	N 45°28'01" E	14.14'
L4	S 44°31'58" E	14.14'
L5	S 45°28'01" W	14.14'
L6	S 44°31'58" W	14.14'
L7	S 45°28'01" W	14.14'
L8	N 45°28'01" E	14.14'
L9	S 44°31'58" E	14.14'
L10	S 44°31'58" W	14.14'
L11	N 89°31'59" W	14.07'
L12	N 89°31'59" W	24.10'
L13	N 51°51'18" E	32.90'
L14	N 89°31'59" W	12.44'
L15	N 89°31'59" W	44.47'
L16	S 89°31'58" E	55.53'
L17	N 89°31'59" W	20.00'
L18	S 00°00'32" E	15.82'
L19	S 89°49'28" E	30.50'

LEGEND

- DENOTES SET 5/8" REBAR WITH SURVEY CAP MARKED TRLS0077
- DENOTES FOUND SURVEY MONUMENT

NOTES:

- MINOR DRAINAGE AND UTILITY EASEMENT SARE HEREBY ESTABLISHED 8' WIDE ON THE INTERIOR SIDE OF ALL LOT LINES AND RIGHT-OF-WAY. (EXCEPT WHERE MAJOR DRAINAGE EASEMENTS ARE LOCATED)
- TOTAL PLATTED AREA: 12.43 ACRES; LOTS: 8.89 ACRES; DEDICATED PUBLIC RIGHT-OF-WAY: 3.54 ACRES.
- ANY MAJOR DRAINAGE EASEMENT SHOWN HEREON SHALL BE KEPT FREE OF ALL OBSTRUCTIONS INCLUDING BUT NOT LIMITED TO BUILDINGS, WALLS, FENCES, HEDGES, TREES, AND SHRUBS. THESE EASEMENTS GRANT TO ALL PUBLIC AUTHORITIES THE RIGHT TO CONSTRUCT, OPERATE, MAINTAIN, INSPECT AND REPAIR SUCH IMPROVEMENTS AND STRUCTURES AS IT DEEMS EXPEDIENT TO FACILITATE DRAINAGE FROM ANY SOURCE.
- NON-ACCESS EASEMENTS ARE HEREBY ESTABLISHED ALONG THE FIRST FIFTY FEET OF CORNER LOTS OR AS INDICATED HEREON.

Plat BK. 32 Pg. 171