

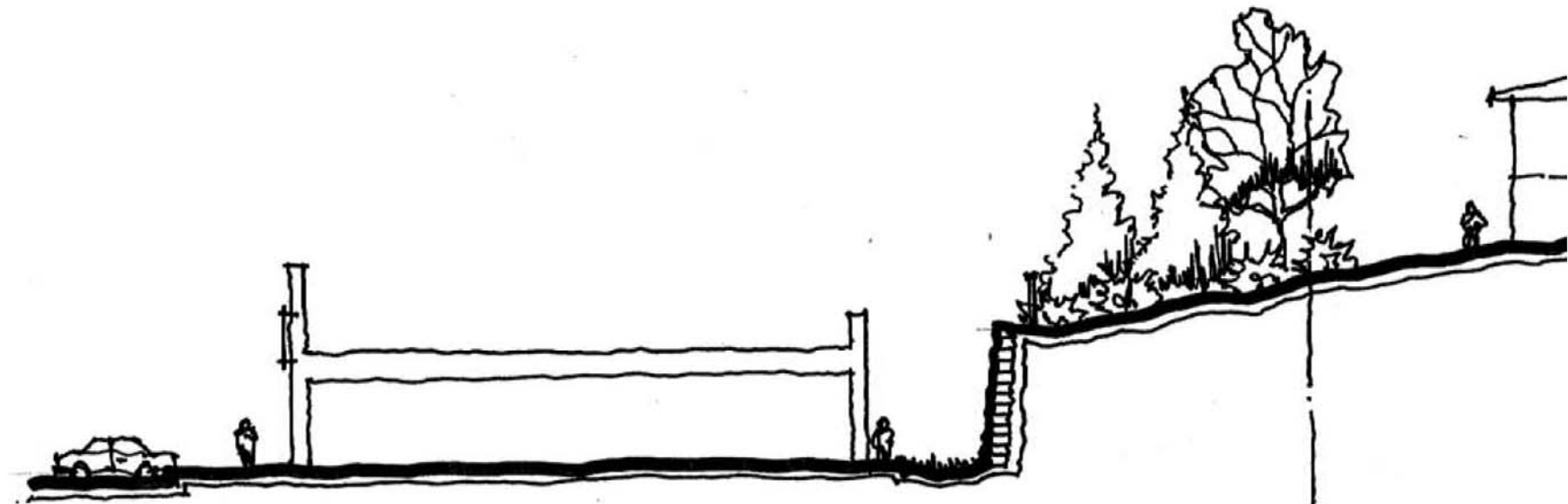
Inside Outside
ARCHITECTURE
 Inc.
 18601 152nd Ave N. Dayton | MN | 55327



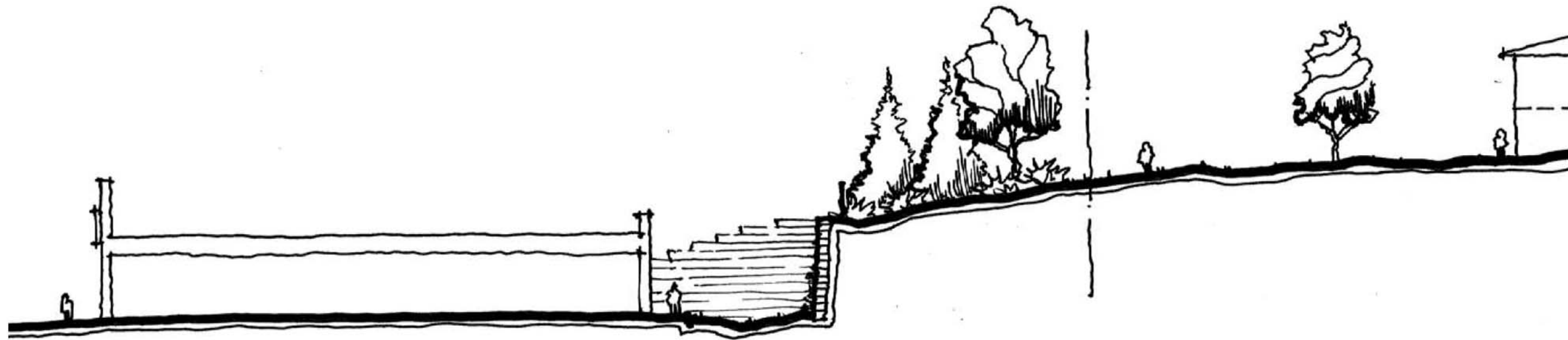
**Commercial Development
 Sheridan Lake Road and Fairway Hills Drive**

Site Plan

Revised September 30, 2010



Section looking toward Fairway Hills Drive



Building section cut at a diagonal

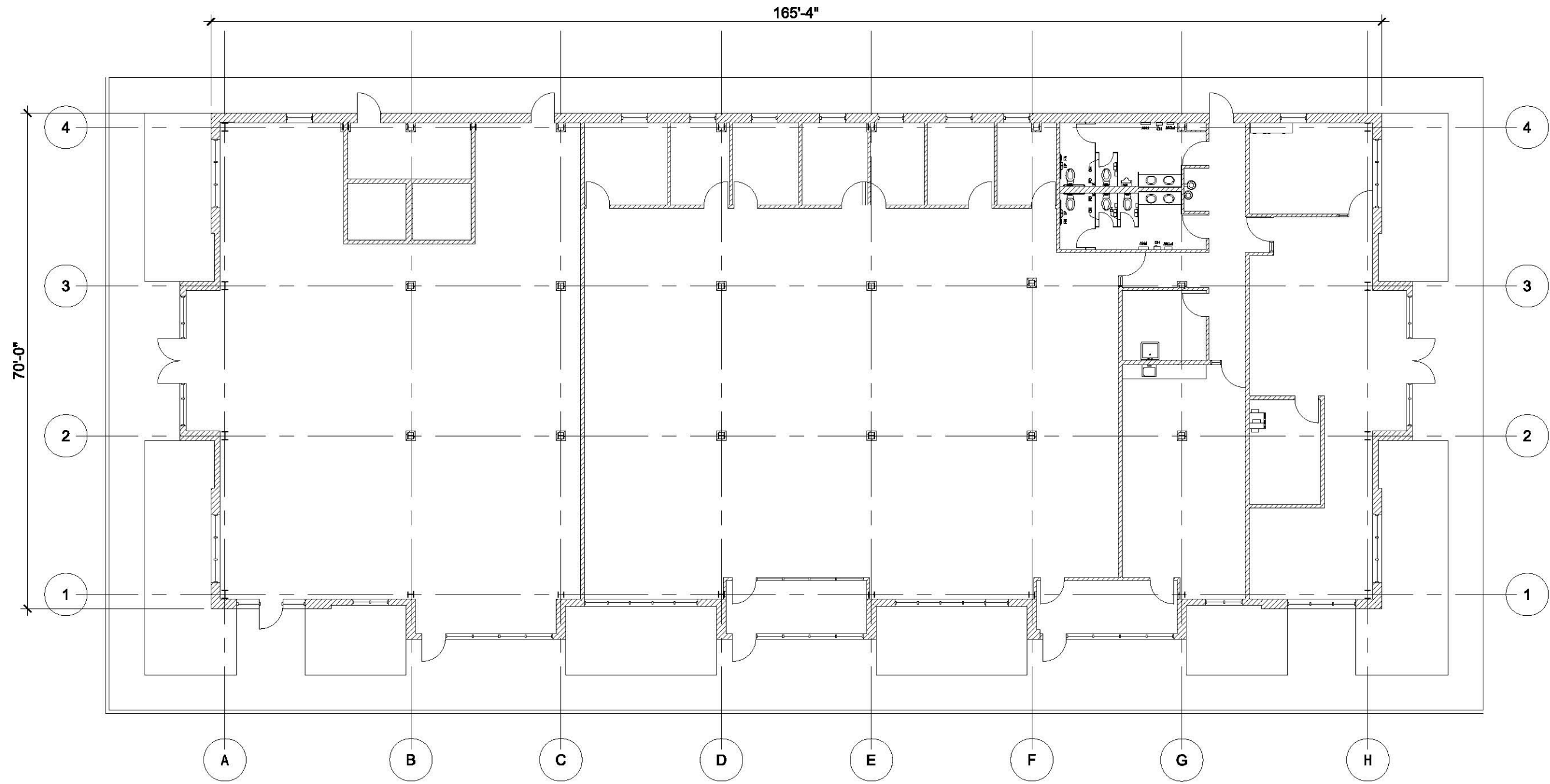
Section looking toward Sheridan Lake Road

Inside Outside
ARCHITECTURE
Inc.
18601 152nd Ave N. Dayton | MN | 55327

Commercial Development
Sheridan Lake Road and Fairway Hills Drive
Preliminary not for construction

Site Sections

September 29, 2010



SCHMATIC FLOOR PLAN - 12,023 SF FOOTPRINT

Inside Outside
ARCHITECTURE
Inc.
 18601 152nd Ave N. Dayton | MN | 55327

Commercial Development
Sheridan Lake Road and Fairway Hills Drive
Preliminary not for construction

Building Plan
 September 29, 2010



Inside Outside
ARCHITECTURE
inc.
18601 152nd Ave N. Dayton | MN | 55327

Commercial Development
Sheridan Lake Road and Fairway Hills Drive
Preliminary not for construction

Building Elevation

September 29, 2010

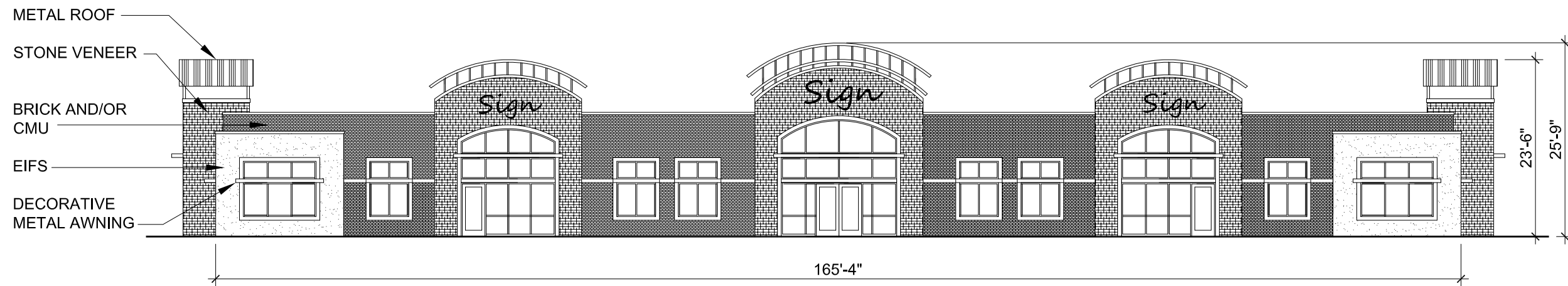


Inside Outside
ARCHITECTURE
Inc.
18601 152nd Ave N. Dayton | MN | 55327

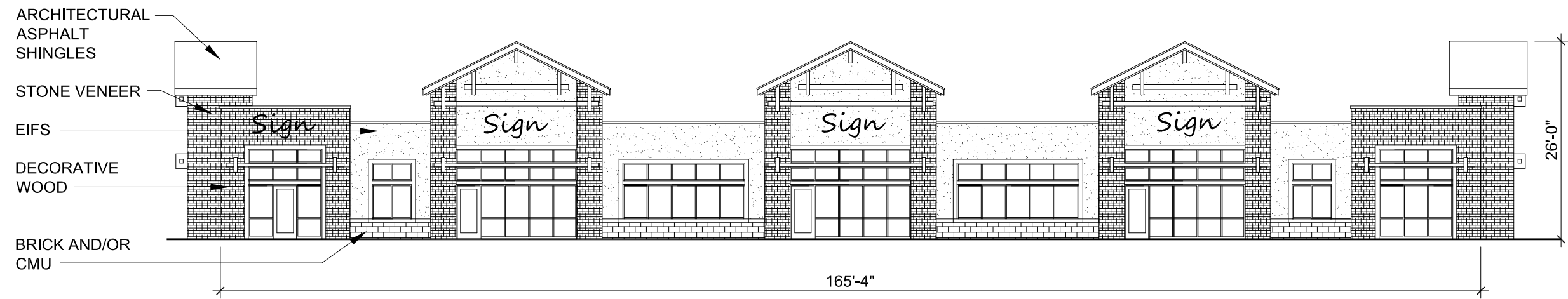
Commercial Development
Sheridan Lake Road and Fairway Hills Drive
Preliminary not for construction

Building Elevation

September 29, 2010



SCHEMATIC ELEVATION OPTION A
 COMMERCIAL DEVELOPMENT @ FAIRWAY HILLS DRIVE & SHERIDAN LAKE ROAD
 9-29-2010
 PRELIMINARY NOT FOR CONSTRUCTION
 $\frac{1}{16}'' = 1'-0''$



SCHEMATIC ELEVATION OPTION B
 COMMERCIAL DEVELOPMENT @ FAIRWAY HILLS DRIVE & SHERIDAN LAKE ROAD
 9-29-2010
 PRELIMINARY NOT FOR CONSTRUCTION
 $\frac{1}{16}'' = 1'-0''$