

**EXTERIOR FINISH SCHEDULE**

BUILDING ELEMENT	MATERIAL	FINISH	COLOR	NOTES
ROOFING	THERMOPLASTIC POLYOLEFIN ROOFING MEMBRANE	N/A	SEE NOTE TO THE RIGHT	#1
BUILDING SKIN, PILASTER CAP, HORIZONTAL BAND, BRACKET, BRACKET PLATE	EIPS	SEE SPECIFICATIONS	SEE KEYED NOTES '2, 3, 4, 5 & 6'	-
BUILDING SKIN	STONE	SEE SCHEDULE	SEE KEYED NOTE '7'	-
BUILDING SKIN, FASCIA/FLASHING, DOOR FRAME, WINDOW FRAME, MECHANICAL LOUVERS	ALUMINUM	PRE-FINISH	SEE KEYED NOTE '1'	#2
SCUPPER	ALUMINUM	PRE-FINISH	SEE KEYED NOTE '1'	#2
DOWNSPOUT	ALUMINUM	PRE-FINISH	SEE KEYED NOTE '1'	#2
PORTE-COCHERE COLUMN COVER	ALUMINUM	PRE-FINISH	SEE KEYED NOTE '1'	
GATE	ALUMINUM	PAINTED	BLACK	

**EXTERIOR FINISH NOTES**

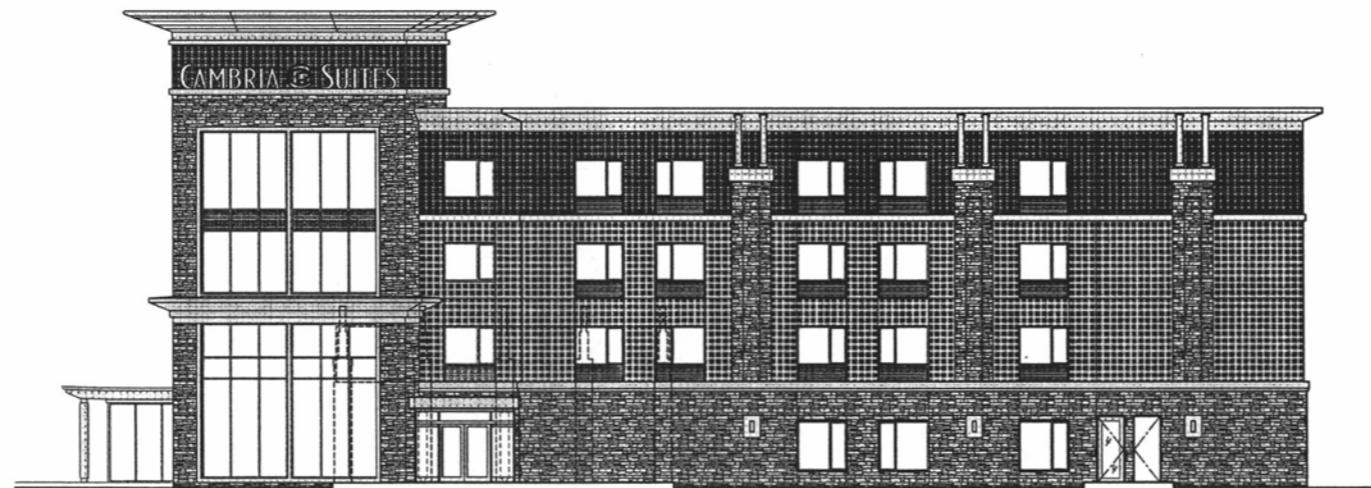
1. ROOFING COLOR SHALL BE FROM MANUFACTURER STANDARD GRAY FOR ROOFS ABOVE DINING ROOM & SPA/POOL ROOM. WHEN THERE ARE MORE THAN ONE OPTION FOR GRAY, COLOR CHIPS SHALL BE SUBMITTED TO ARCHITECT FOR FINAL COLOR SELECTION. AT ALL OTHER ROOF AREA, USE STANDARD WHITE ROOFING MEMBRANE MATERIAL.
2. ALL PREFINISHED ALUMINUM SHALL BE KYMAR 500 FINISH OR EQUAL.
3. COLOR TO MATCH ADJACENT SURFACE UNLESS OTHERWISE NOTED.

**EXTERIOR FINISH KEYED NOTES**

- ◇ ALUMINUM - CLEAR ANODIZED
- ◇ EIFS - DURON MILLENNIUM COLOR COLLECTION - #7785D, HEATHCOTE
- ◇ EIFS - DURON MILLENNIUM COLOR COLLECTION - #8714M, WILDCAT
- ◇ EIFS - DURON MILLENNIUM COLOR COLLECTION - #CV972V, PLUM BLACK WHISPER
- ◇ EIFS - SHERVIN WILLIAMS - #SV2837, AURORA BROWN
- ◇ METALLIC EIFS - COLOR TO MATCH CLEAR ANODIZED ALUMINUM
- ◇ PRAIRIE STONE VENEER - BOULDER CREEK STONE - SIZE: VARIES  
TYPE: FAST STAK  
COLOR: NEMA  
MORTAR: SGS MORTAR COLORS; SOLOMON GRIND-CHEM



**SOUTH ELEVATION**  
SCALE: 1/8" = 1'-0"



**EAST ELEVATION**  
SCALE: 1/8" = 1'-0"



OWNER:

PROJECT:  
PROPOSED CAMBRIA SUITES  
RAPID CITY, SOUTH DAKOTA

PRELIMINARY  
PLAN DATE:

\_\_\_\_\_

\_\_\_\_\_

\_\_\_\_\_

\_\_\_\_\_

\_\_\_\_\_

\_\_\_\_\_

\_\_\_\_\_

\_\_\_\_\_

\_\_\_\_\_

\_\_\_\_\_

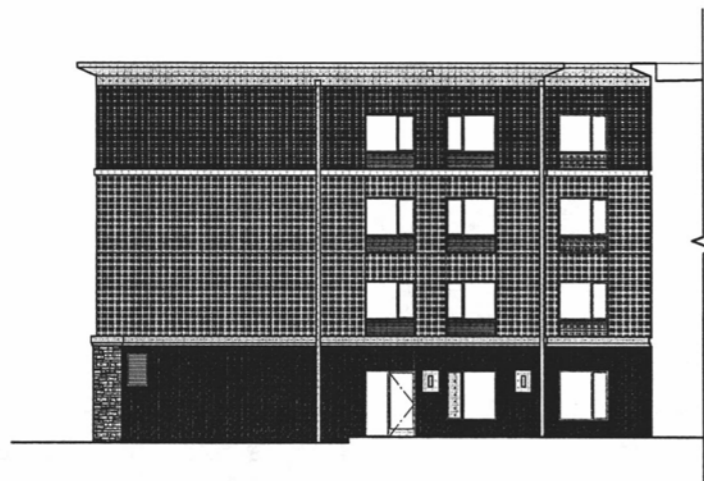
DATE:  
8-11-10  
JOB NUMBER:  
1004050

SHEET

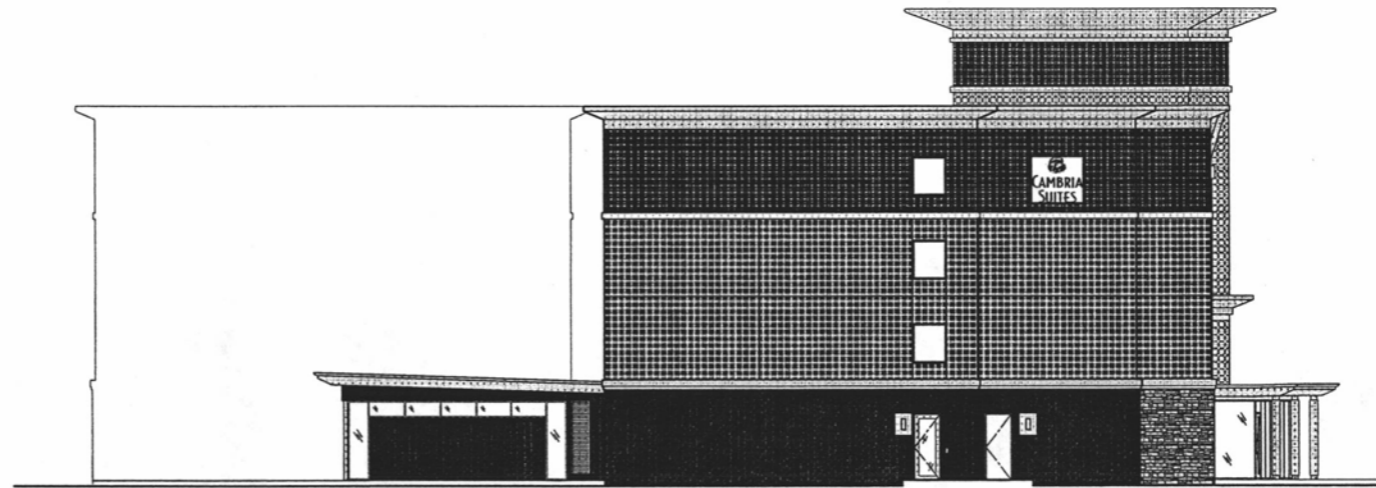
A2.0



NORTH ELEVATION  
SCALE: 1/8" = 1'-0"



WEST BACK ELEVATION  
SCALE: 1/8" = 1'-0"



WEST FRONT ELEVATION  
SCALE: 1/8" = 1'-0"

OWNER:

PROJECT:  
PROPOSED CAMBRIA SUITES  
RAPID CITY, SOUTH DAKOTA

PRELIMINARY  
PLAN DATE:


DATE:  
8-11-10  
JOB NUMBER:  
1004050

SHEET

A2.1