

RECEIVED

SEP 24 2010

Rapid City Growth Management Department



F M G, Inc.
3700 Sturgis Road
Rapid City, SD 57702-0317
(605) 342-4105 FAX (605) 342-4222
www.fmgengineering.com



File Number: 8981.08
Location:
Surveyed By:
Date:
Drawn By: JJK
Checked By: JJK

GOOD SAMARITAN SOCIETY
ST. MARTIN'S VILLAGE
RAPID CITY, SD
SEPTEMBER 2010

Revision / Date

Sheet Name
TRAFFIC CALMING CONCEPT

Figure Number:

TC1

EXISTING ROAD REPOSTED TO 25 MPH

MIDBLOCK CHOKER/LANE OFFSET, RAISED ISLAND WITH OFFSET 10' LANES (LIP TO LIP), ADVISORY SPEED PLATE POSTING FOR 15 MPH

MIDBLOCK MEDIAN/CHOKER/LANE OFFSET. RAISED ISLAND WITH OFFSET 10' LANES (LIP TO LIP), ADVISORY SPEED PLATE POSTING FOR 15 MPH

24' STREET (LIP TO LIP) WITH 25 MPH SPEED LIMITS SIGNS

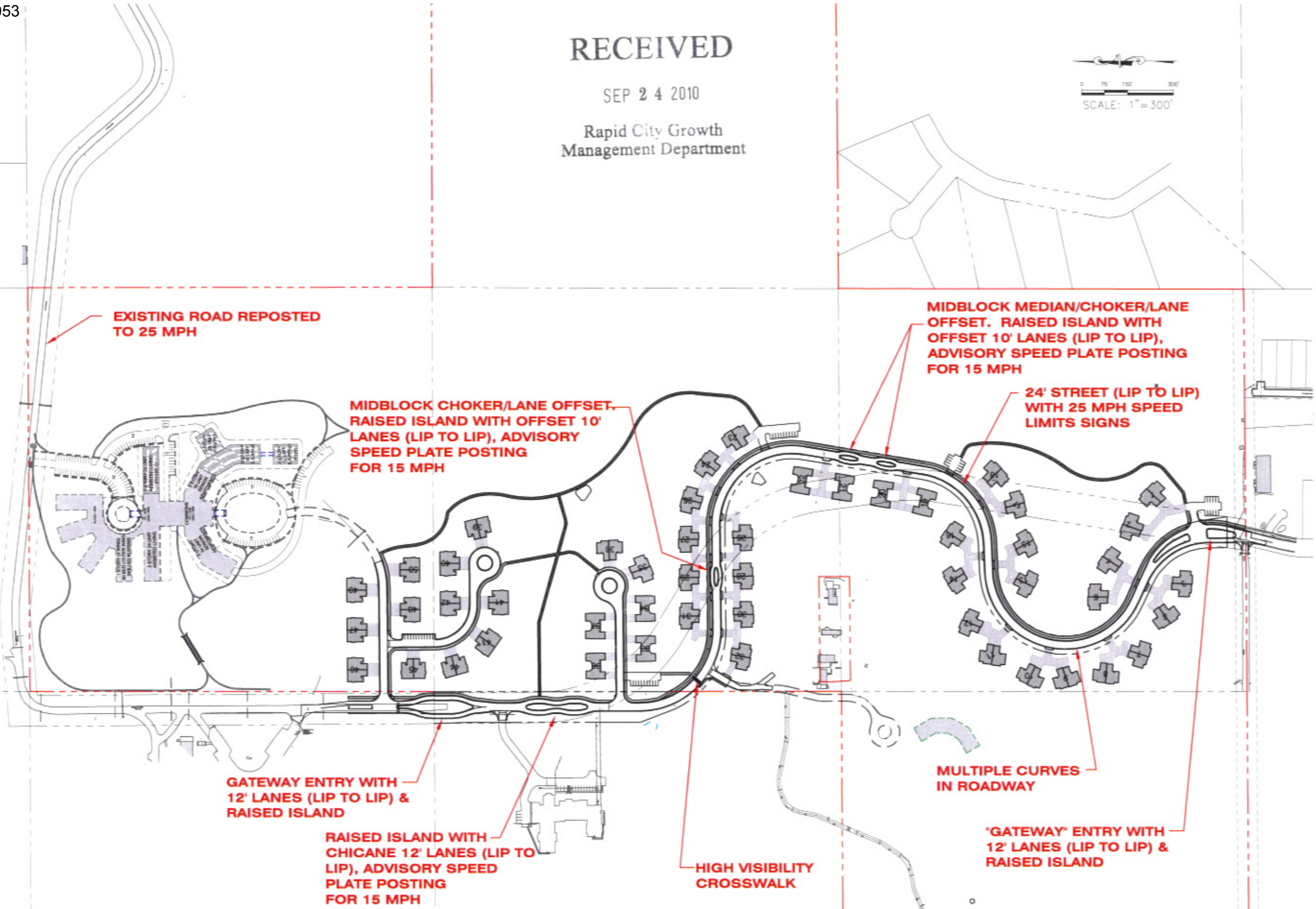
GATEWAY ENTRY WITH 12' LANES (LIP TO LIP) & RAISED ISLAND

RAISED ISLAND WITH CHICANE 12' LANES (LIP TO LIP), ADVISORY SPEED PLATE POSTING FOR 15 MPH

HIGH VISIBILITY CROSSWALK

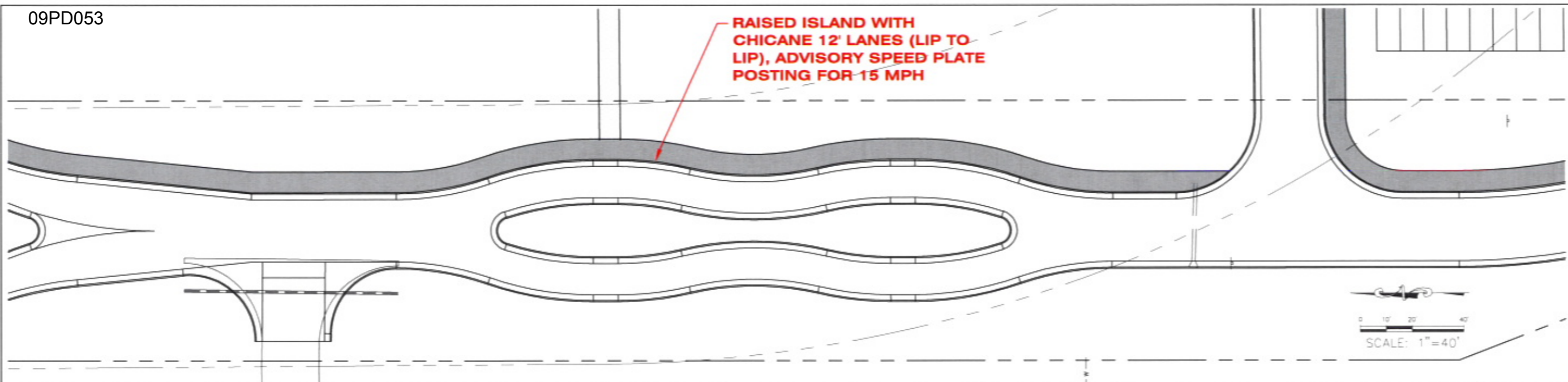
MULTIPLE CURVES IN ROADWAY

"GATEWAY" ENTRY WITH 12' LANES (LIP TO LIP) & RAISED ISLAND



\\0901-08-Cadoc-Sturm\dwg\0901-08-Cadoc-Sturm.dwg: 11 x 17 - 9/23/2010 7:48:38 AM

RAISED ISLAND WITH CHICANE 12' LANES (LIP TO LIP), ADVISORY SPEED PLATE POSTING FOR 15 MPH



F M G, Inc.
3700 Burgis Road
Rapid City, SD 57702-0317
(605) 342-4105 FAX (605) 342-4222
www.fmgengineering.com



File Number: 0901.00
Location:
Surveyed By:
Date:
Drawn By: JJK
Checked By: JJK

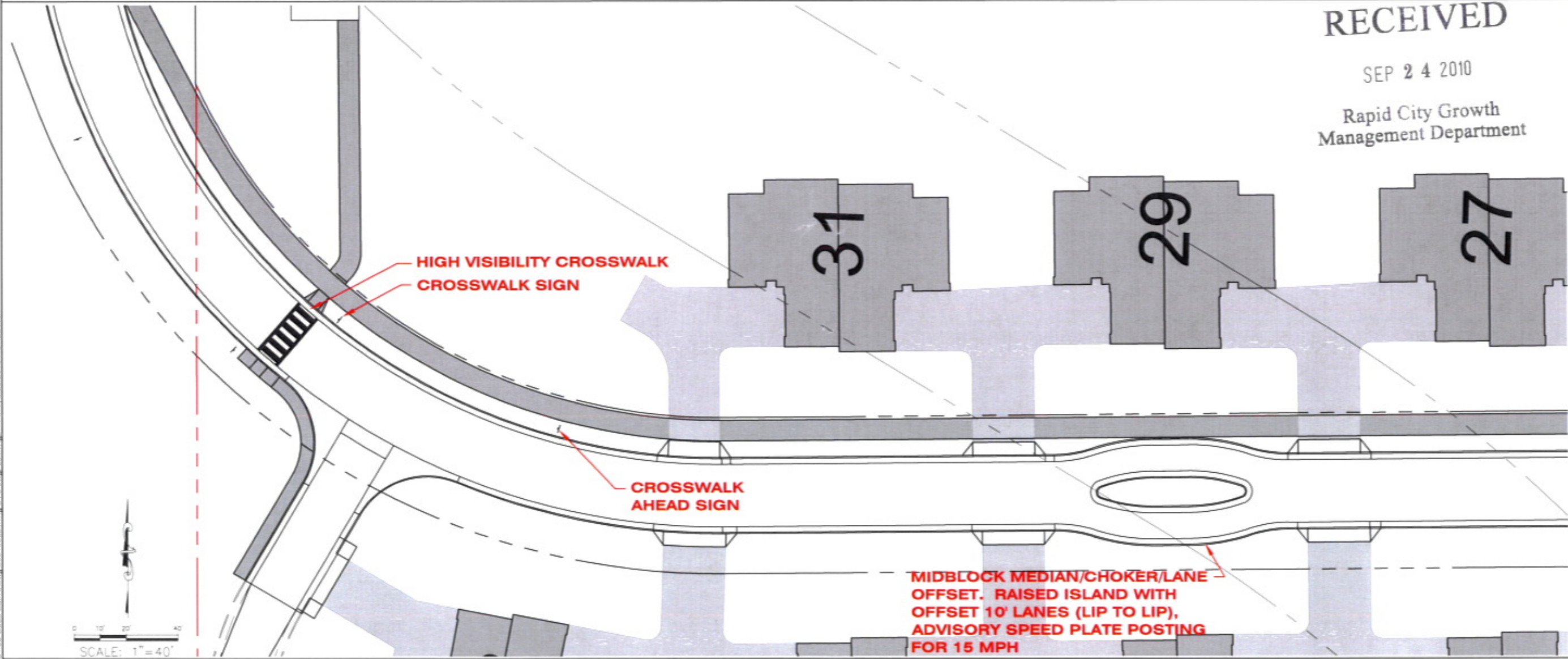
RECEIVED

SEP 24 2010

Rapid City Growth Management Department

GOOD SAMARITAN SOCIETY
ST. MARTINS VILLAGE
RAPID CITY, SD
SEPTEMBER 2010

HIGH VISIBILITY CROSSWALK
CROSSWALK SIGN

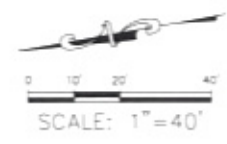
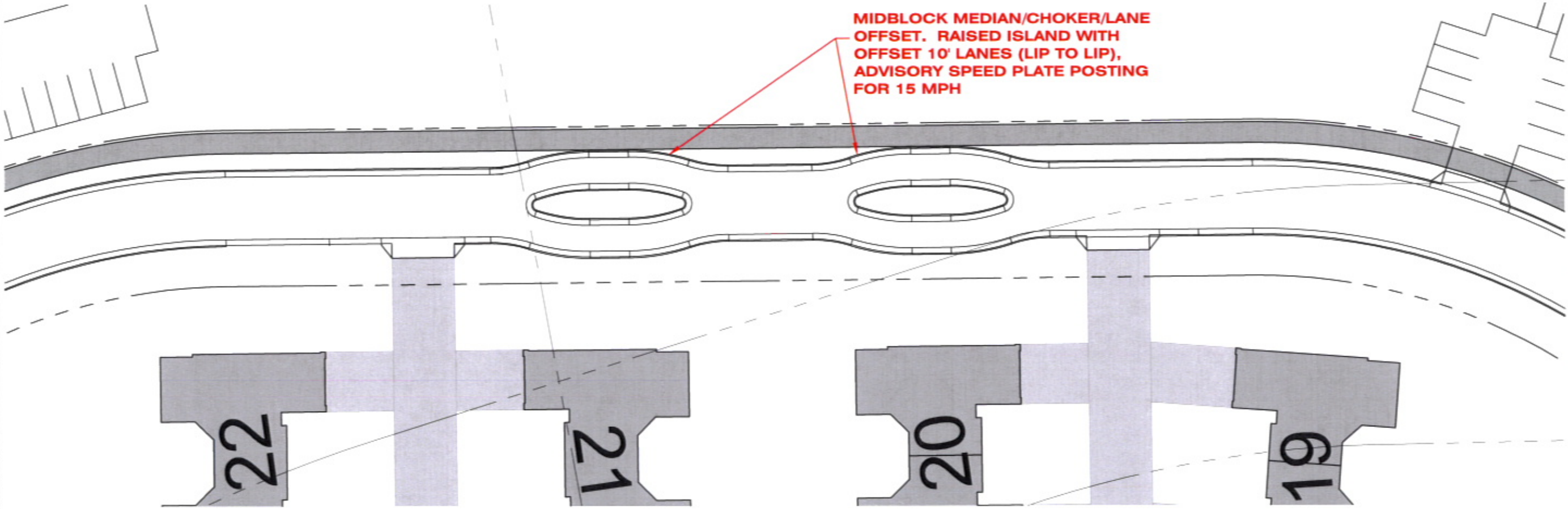


CROSSWALK AHEAD SIGN

MIDBLOCK MEDIAN/CHOKER/LANE OFFSET. RAISED ISLAND WITH OFFSET 10' LANES (LIP TO LIP), ADVISORY SPEED PLATE POSTING FOR 15 MPH

Revision / Date
Sheet Name
ENLARGED TRAFFIC CALMING CONCEPT

Figure Number:
TC2



**MIDBLOCK MEDIAN/CHOKER/LANE
OFFSET. RAISED ISLAND WITH
OFFSET 10' LANES (LIP TO LIP),
ADVISORY SPEED PLATE POSTING
FOR 15 MPH**

F M G, Inc.
3700 Sturgis Road
Rapid City, SD 57702-0317
(605) 342-4108 FAX (605) 342-4222
www.fmgengineering.com



File Number: 0901.08
Location:
Surveyed By:
Date:
Drawn By: JJK
Checked By: JJK

**GOOD SAMARITAN SOCIETY
ST. MARTINS VILLAGE**
RAPID CITY, SD
AUGUST 2010

Revision / Date

Sheet Name
ENLARGED
TRAFFIC
CALMING
CONCEPT

Figure Number:

TC3

RECEIVED

SEP 24 2010

Rapid City Growth
Management Department