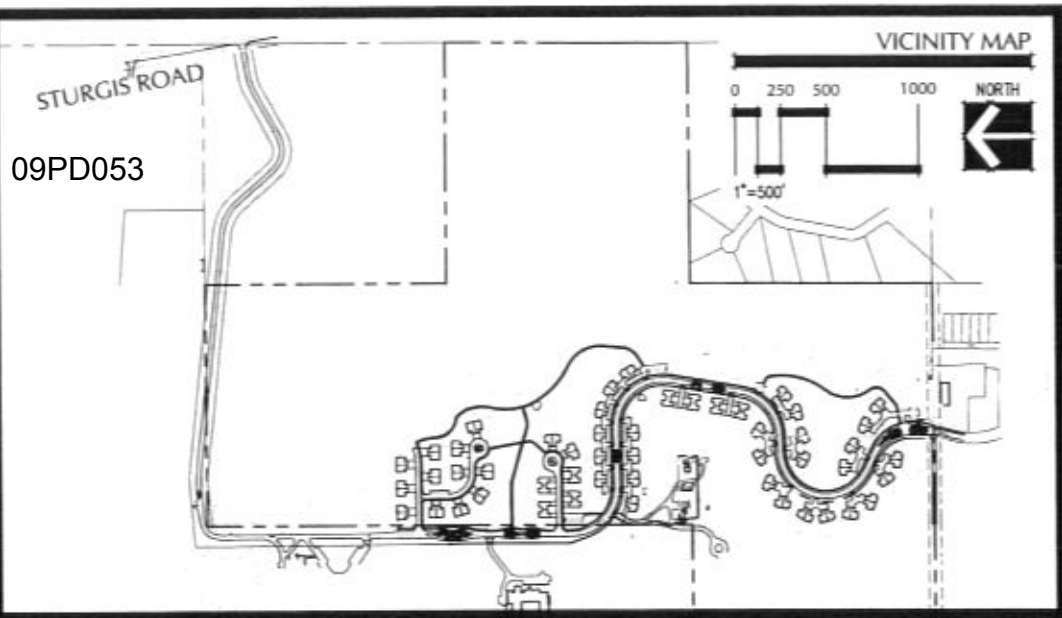


09PD053



GENERAL LANDSCAPE REQUIREMENTS.

1. Installation. All landscaping shall be installed in a sound workmanship-like manner according to accepted good planting and xeriscaping procedures and according to the approved plan. All landscaping shall be installed per plans submitted.
2. Trees shall be located such that mature height and spread will not interfere with overhead power lines.
3. Mulched landscape beds or a minimum 4' diameter ring of mulch shall be provided around all trees or landscape areas.
4. Proposed irrigation systems shall be drip irrigation provided by Treegators or similar watering devices. All trees and large shrubs shall receive Treegators. All ornamental landscaped beds, grassed areas will be hand watered until established.
5. Maintenance. The owner of the property shall be responsible for the maintenance of all landscape areas. The areas shall be maintained so as to present a healthy, neat and orderly appearance at all times and shall be kept free from refuse and debris. Maintenance shall include the replacement of all dead plant materials.
6. Deciduous trees shall be a minimum of one and one-half inch caliper twelve inches above grade measured immediately after planting.
7. Evergreen trees shall be a minimum height of four feet measured immediately after planting.
8. Groundcovers other than grasses shall be planted in such a manner as to present a finished appearance and complete coverage within one year after planting.

9. Shrubs shall be a minimum of one foot in height when measured immediately after planting.
10. Lawn grass areas shall be Native grasses per schedule.

LOW UNMANICURED IRRIGATED NATIVE GRASSES

- buffalo grass
- side oats gramma
- blue gramma

MANICURED IRRIGATED GRASS

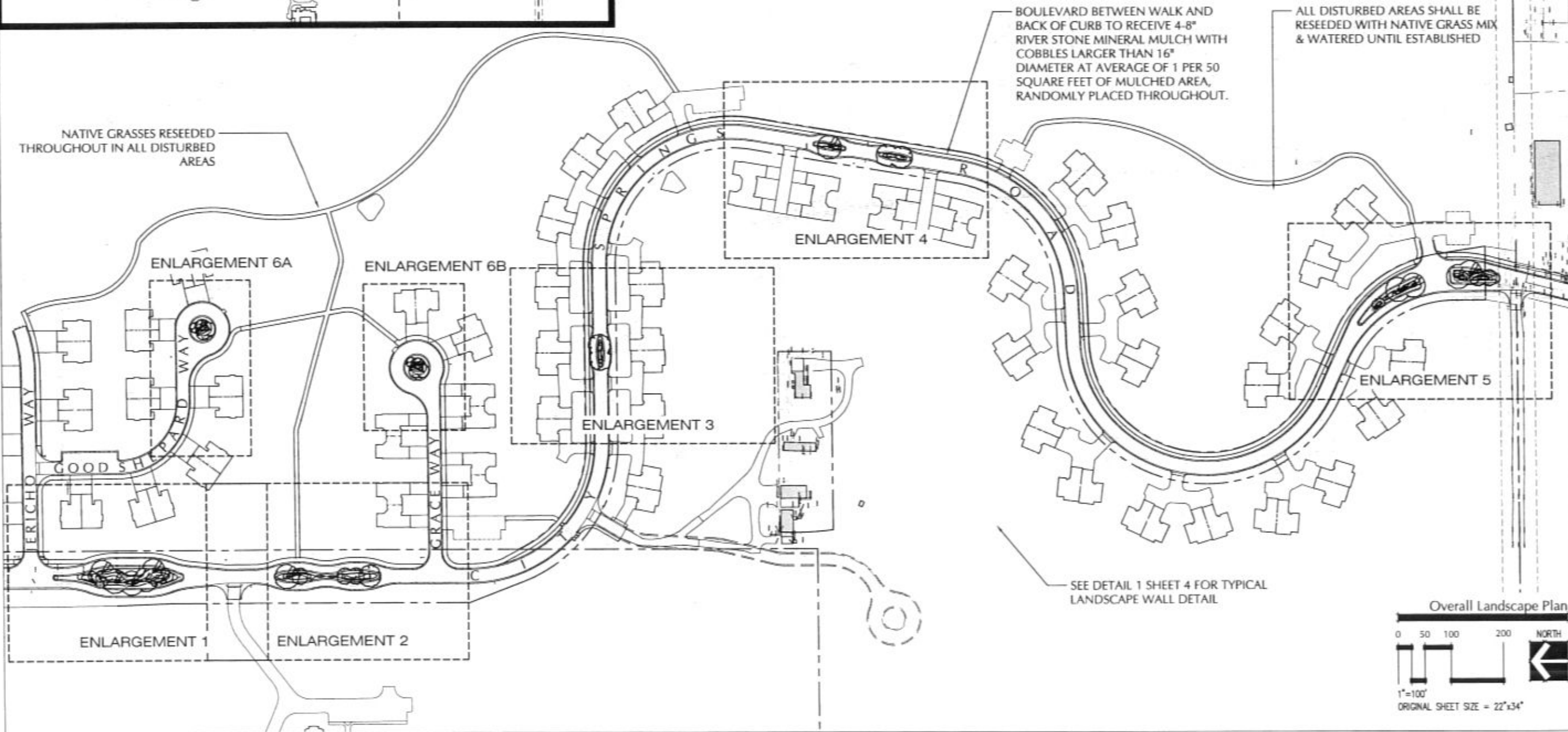
- fescues

ORGANIZED NATIVE PLANTS IN ORNAMENTAL LANDSCAPE BEDS

- paprika yarrow
- butterfly weed
- prairie phlox
- long-headed coneflower
- purple prairie clover
- meadow blazing star
- black-eyed susan
- heavy metal switchgrass

REMAINING OPEN AREAS

- existing natural grasses
- existing trees
- reseeded native grasses



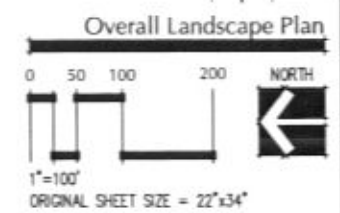
File Number:	8981.08
Location:	EAST 1/2, SECTION 29, T2N, R7E, B9M
Surveyed By:	FAC
Date:	3/08-5/08
Designed By:	MOF
Drawn By:	
Checked By:	

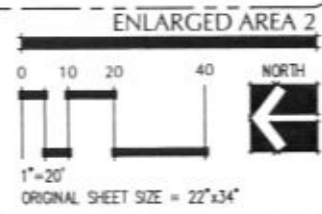
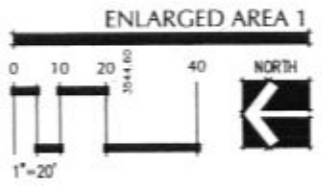
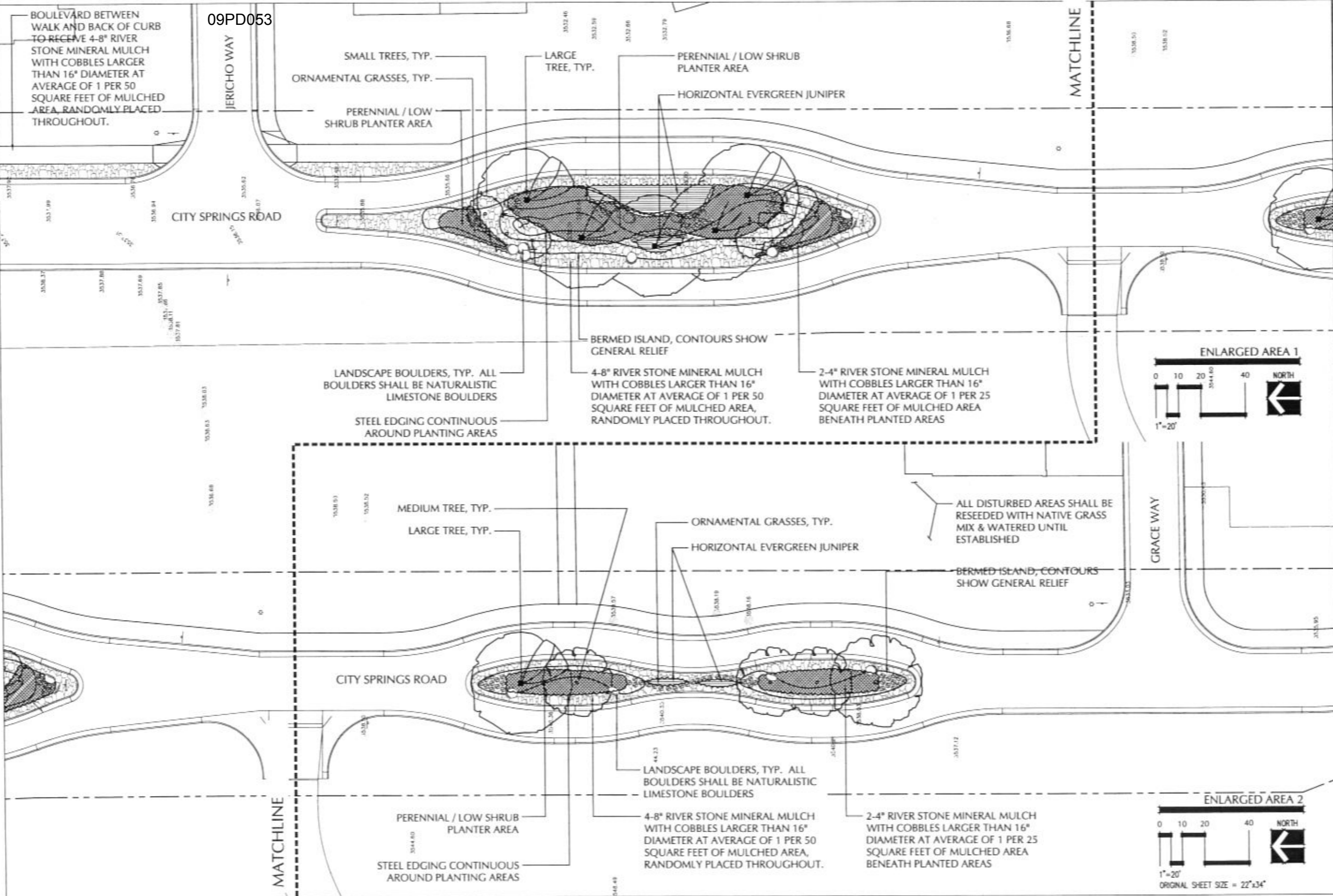
**GOOD SAMARITAN SOCIETY
ST. MARTINS VILLAGE
RAPID CITY, SOUTH DAKOTA**

September 16, 2010
Revision / Date
Sheet Name:
OVERALL LANDSCAPE CONCEPT
Sheet Number:
1 OF 4

Wyss Associates, Inc.
Landscape Architecture - Golf Course Architecture - Parks & Recreation Design
728 8th Street, Rapid City, South Dakota 57701-3672
Phone: 605.342.1100 Fax: 605.342.1101
Email: wyss@wyssassociates.com

SEPTEMBER 2010





Wyss Associates, Inc.
Landscape Architecture - Golf Course Architecture - Parks & Recreation Design
728 South Lowell, Rapid City, South Dakota 57701-3870
605.343.2248 Fax 605.343.6508
www.wyssh.com

File Number: **8881.08**
Location: **EAST 1/2, SECTION 29, T2N, R7E, B1W**
Surveyed By: **FWG**
Date: **2/08-5/08**
Designed By: **MPJ**
Drawn By:
Checked By:

**GOOD SAMARITAN SOCIETY
ST. MARTINS VILLAGE
RAPID CITY, SOUTH DAKOTA**

September 16, 2010
Revision / Date
Sheet Name
ENLARGED LANDSCAPE CONCEPTS
Sheet Number
2 OF 4

SEPTEMBER 2010

CITY SPRINGS ROAD

ORNAMENTAL GRASSES, TYP.

MEDIUM TREES, TYP.
PERENNIAL / LOW SHRUB PLANTER AREA

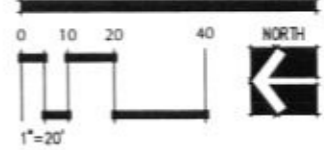
ENLARGED AREA 3



ORNAMENTAL GRASSES, TYP.
LARGE TREE
PERENNIAL / LOW SHRUB PLANTER AREA

MEDIUM TREES, TYP.
PERENNIAL / LOW SHRUB PLANTER AREA
ORNAMENTAL GRASSES, TYP.

ENLARGED AREA 4



LARGE TREES, TYP.
PERENNIAL / LOW SHRUB PLANTER AREA
HORIZONTAL EVERGREEN JUNIPER, TYP.
SMALL TREE, TYP.
ORNAMENTAL GRASSES, TYP.

LARGE TREES, TYP.
PERENNIAL / LOW SHRUB PLANTER AREA
ORNAMENTAL GRASSES, TYP.

3481.390.25
3480.63
3481.33
3480.390.08

3481.040.73
3480.80
3481.33
3480.75

CITY SPRINGS ROAD

HORIZONTAL JUNIPER, TYP.

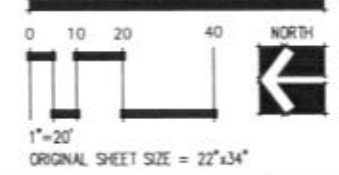
2-4" RIVER STONE MINERAL MULCH WITH COBBLES LARGER THAN 16" DIAMETER AT AVERAGE OF 1 PER 25 SQUARE FEET OF MULCHED AREA BENEATH PLANTED AREAS

LANDSCAPE BOULDERS, TYP. ALL BOULDERS SHALL BE NATURALISTIC LIMESTONE BOULDERS
STEEL EDGING CONTINUOUS AROUND PLANTING AREAS

BERMED ISLAND, CONTOURS SHOW GENERAL RELIEF

4-8" RIVER STONE MINERAL MULCH WITH COBBLES LARGER THAN 16" DIAMETER AT AVERAGE OF 1 PER 50 SQUARE FEET OF MULCHED AREA, RANDOMLY PLACED THROUGHOUT.

ENLARGED AREA 5



Wyss Associates, Inc.
Landscape Architecture - Golf Course Architecture - Parks & Recreation Design
128 South 21st
Rapid City, South Dakota 57701-3810
605.348.2200 Fax 605.348.8508
www.wyssassociates.com

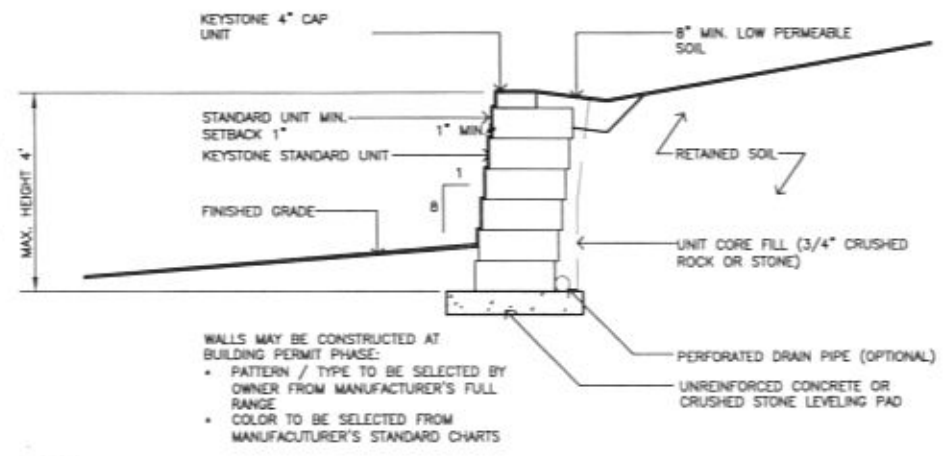
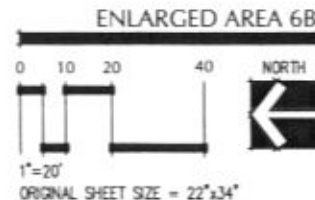
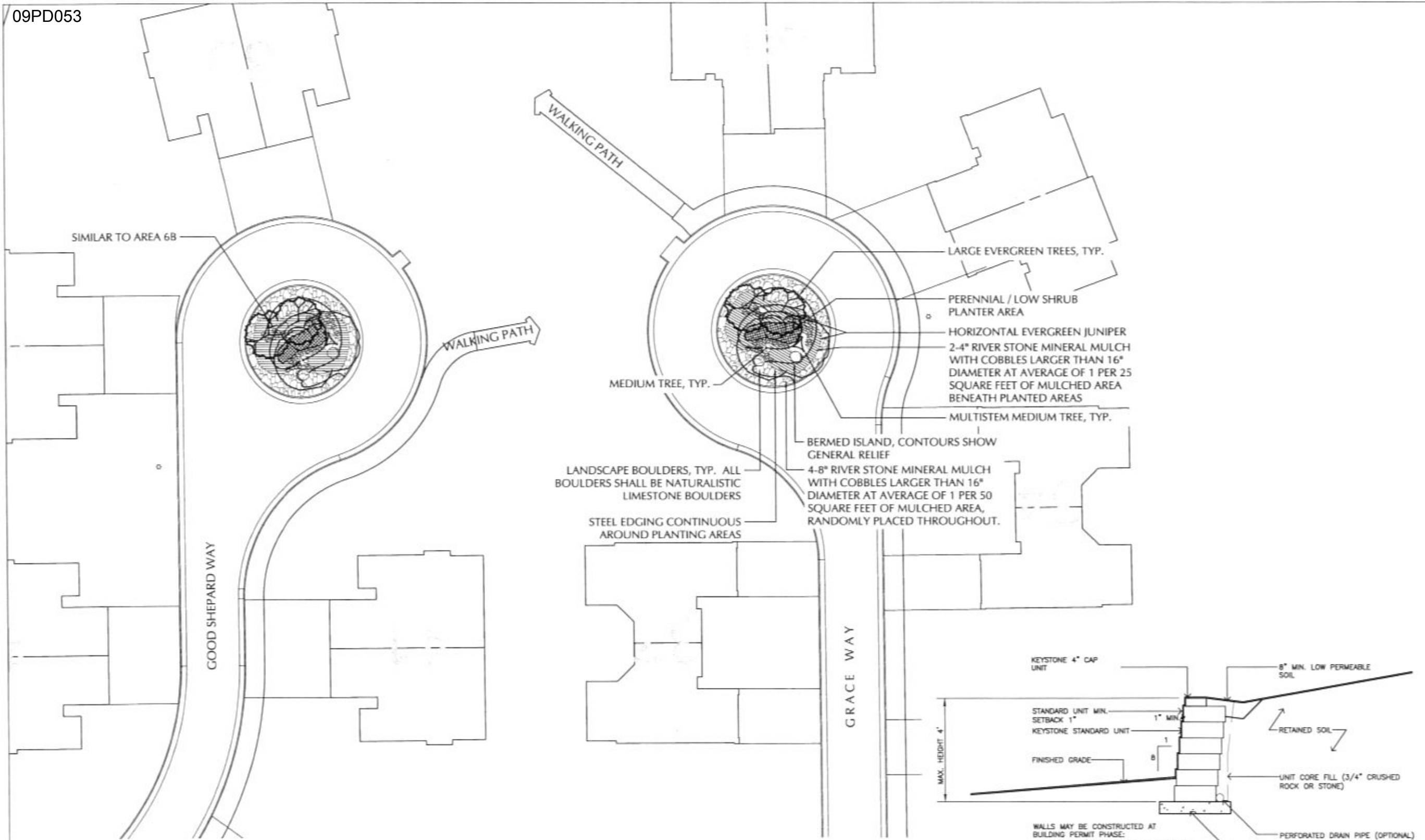
File Number: 8981.08
Location: EAST 1/2, SECTION 28, T2N, R7E, B1W
Surveyed By: FWG
Date: 2/08-5/08
Designed By: MOF
Drawn By:
Checked By:

GOOD SAMARITAN SOCIETY
ST. MARTINS VILLAGE
RAPID CITY, SOUTH DAKOTA

September 16, 2010
Revision / Date
Sheet Name:

ENLARGED LANDSCAPE CONCEPTS

SEPTEMBER 2010



1
4 TYPICAL LANDSCAPE WALL SECTION
SCALE: 1" = 1'-0"

Wyss Associates, Inc.
 Landscape Architecture - Golf Course Architecture - Parks & Recreation Design
 1221 South Tower, Rapid City, South Dakota 57701-3870
 605.348.2384 Fax 605.348.2698
 www.wyssassociates.com

File Number:	8881.08
Location:	EAST 1/2, SECTION 26, 72N, R7E, S14W
Surveyed By:	FMG
Date:	2/08-5/08
Designed By:	WCF
Drawn By:	
Checked By:	

**GOOD SAMARITAN SOCIETY
 ST. MARTINS VILLAGE
 RAPID CITY, SOUTH DAKOTA**

September 16, 2010
Revision / Date
Sheet Name:
ENLARGED LANDSCAPE CONCEPTS