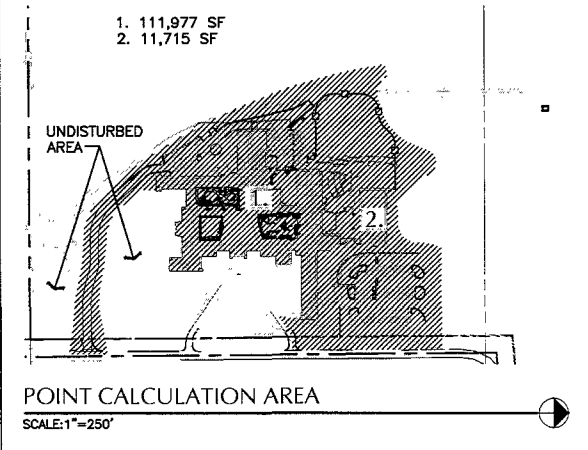
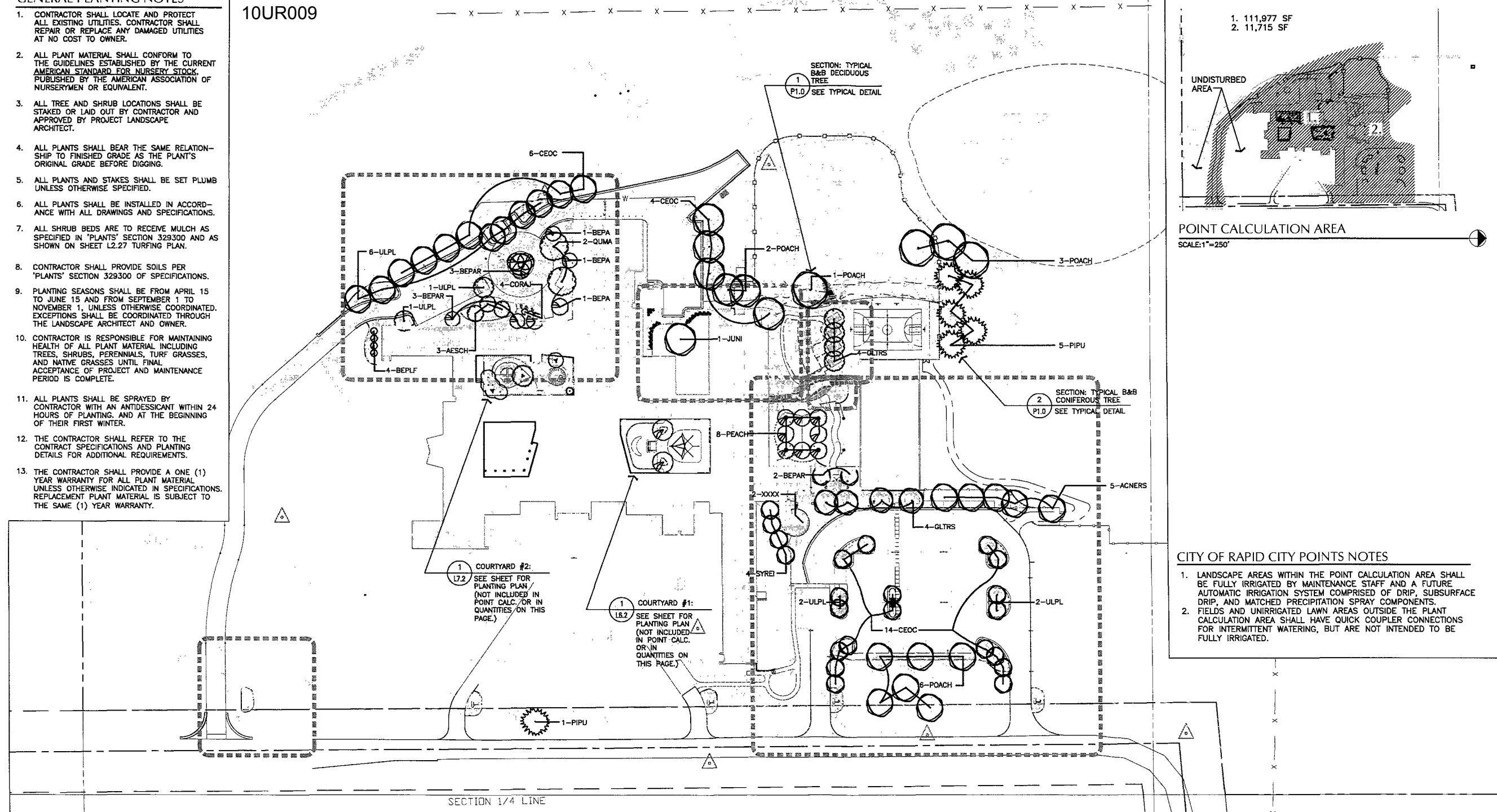


- GENERAL PLANTING NOTES**
- CONTRACTOR SHALL LOCATE AND PROTECT ALL EXISTING UTILITIES. CONTRACTOR SHALL REPAIR OR REPLACE ANY DAMAGED UTILITIES AT NO COST TO OWNER.
  - ALL PLANT MATERIAL SHALL CONFORM TO THE GUIDELINES ESTABLISHED BY THE CURRENT AMERICAN STANDARD FOR NURSERY STOCK, PUBLISHED BY THE AMERICAN ASSOCIATION OF NURSERYMEN OR EQUIVALENT.
  - ALL TREE AND SHRUB LOCATIONS SHALL BE STAKED OR LAID OUT BY CONTRACTOR AND APPROVED BY PROJECT LANDSCAPE ARCHITECT.
  - ALL PLANTS SHALL BEAR THE SAME RELATIONSHIP TO FINISHED GRADE AS THE PLANT'S ORIGINAL GRADE BEFORE DIGGING.
  - ALL PLANTS AND STAKES SHALL BE SET PLUMB UNLESS OTHERWISE SPECIFIED.
  - ALL PLANTS SHALL BE INSTALLED IN ACCORDANCE WITH ALL DRAWINGS AND SPECIFICATIONS.
  - ALL SHRUB BEDS ARE TO RECEIVE MULCH AS SPECIFIED IN 'PLANTS' SECTION 329300 AND AS SHOWN ON SHEET L2.27 TURFING PLAN.
  - CONTRACTOR SHALL PROVIDE SOILS PER 'PLANTS' SECTION 329300 OF SPECIFICATIONS.
  - PLANTING SEASONS SHALL BE FROM APRIL 15 TO JUNE 15 AND FROM SEPTEMBER 1 TO NOVEMBER 1, UNLESS OTHERWISE COORDINATED. EXCEPTIONS SHALL BE COORDINATED THROUGH THE LANDSCAPE ARCHITECT AND OWNER.
  - CONTRACTOR IS RESPONSIBLE FOR MAINTAINING HEALTH OF ALL PLANT MATERIAL INCLUDING TREES, SHRUBS, PERENNIALS, TURF GRASSES, AND NATIVE GRASSES UNTIL FINAL ACCEPTANCE OF PROJECT AND MAINTENANCE PERIOD IS COMPLETE.
  - ALL PLANTS SHALL BE SPRAYED BY CONTRACTOR WITH AN ANTIDESSICANT WITHIN 24 HOURS OF PLANTING, AND AT THE BEGINNING OF THEIR FIRST WINTER.
  - THE CONTRACTOR SHALL REFER TO THE CONTRACT SPECIFICATIONS AND PLANTING DETAILS FOR ADDITIONAL REQUIREMENTS.
  - THE CONTRACTOR SHALL PROVIDE A ONE (1) YEAR WARRANTY FOR ALL PLANT MATERIAL UNLESS OTHERWISE INDICATED IN SPECIFICATIONS. REPLACEMENT PLANT MATERIAL IS SUBJECT TO THE SAME (1) YEAR WARRANTY.

10UR009



- CITY OF RAPID CITY POINTS NOTES**
- LANDSCAPE AREAS WITHIN THE POINT CALCULATION AREA SHALL BE FULLY IRRIGATED BY MAINTENANCE STAFF AND A FUTURE AUTOMATIC IRRIGATION SYSTEM COMPRISED OF DRIP, SUBSURFACE DRIP, AND MATCHED PRECIPITATION SPRAY COMPONENTS.
  - FIELDS AND UNIRRIGATED LAWN AREAS OUTSIDE THE POINT CALCULATION AREA SHALL HAVE QUICK COUPLER CONNECTIONS FOR INTERMITTENT WATERING, BUT ARE NOT INTENDED TO BE FULLY IRRIGATED.

**EXISTING UTILITIES LOCATIONS:**  
 THE LOCATIONS OF EXISTING UNDERGROUND UTILITIES ARE SHOWN IN AN APPROXIMATE WAY ONLY AND HAVE NOT BEEN INDEPENDENTLY VERIFIED BY THE OWNERS OR ITS REPRESENTATIVE. THE CONTRACTOR SHALL DETERMINE THE EXACT LOCATION OF ALL EXISTING UTILITIES BEFORE COMMENCING WORK, AND AGREES TO BE FULLY RESPONSIBLE FOR ANY AND ALL DAMAGES WHICH MIGHT BE OCCASIONED BY THE CONTRACTOR'S FAILURE TO EXACTLY LOCATE AND PRESERVE ANY AND ALL UNDERGROUND UTILITIES. CONTACT THE SOUTH DAKOTA ONE CALL NOTIFICATION CENTER 2025 CENTRE POINTE BOULEVARD #310 MENDOTA HEIGHTS, MN 55120 1-800-781-7474

**CITY OF RAPID CITY POINTS COMPLIANCE**

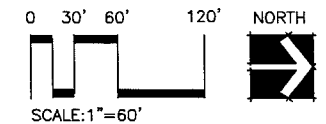
DEVELOPED AREA	469,901 SQ. FT.
STRUCTURE SQUARE FOOTAGE	123,692 SQ. FT.
LANDSCAPE POINTS REQUIRED	346,209 POINTS

DESCRIPTION	UNITS/POINTS GIVEN	TOTAL POINTS
TURF AREA	1,404 S.Y. @ 10 PTS / S.Y.	14,030 PTS.
LARGE DECIDUOUS TREES—SEE LEGEND (L)	51 @ 2000 PTS EA.	102,000 PTS.
MEDIUM DECIDUOUS TREES—SEE LEGEND (M)	16 @ 1000 PTS EA.	16,000 PTS.
SMALL DECIDUOUS TREES—SEE LEGEND (S)	8 @ 500 PTS EA.	4,000 PTS.
CONIFEROUS TREES	6 @ 2000 PTS EA.	12,000 PTS.
DECIDUOUS SHRUBS	535 @ 250 PTS EA.	133,750 PTS.
GROUNDCOVER	776 S.Y. @ 100 PTS/S.Y.	77,600 PTS.
<b>POINTS PROVIDED</b>		<b>359,380 PTS.</b>

**TREE PLANTING SCHEDULE**

QTY	SYMBOL	COMMON NAME	BOTANICAL NAME	SIZE	HEIGHT	COMMENTS	SIZE
<b>DECIDUOUS TREES</b>							
4	SYREI	TREE LILAC	<i>SYRINGA RETICULATA 'IVORY SILK'</i>	1" CAL		#15 MINIMUM	S
8		PEACH (2) VARIETIES: (4) EACH:	<i>PRUNUS PERSICA 'ELBERTA'</i> <i>PRUNUS PERSICA 'SCARLET PRINCE'</i>	4-5" SPREAD	5-10' HGT.	#15 OR AS AVAILABLE	S
5	ACNERS	RED SENSATION MAPLE	<i>ACER NEGUNDO 'RED SENSATION'</i>	1½"-2" CAL	10-12' HGT.	B&B, SPACE PER PLANS	L
3	AESCH	HOMESTEAD BUCKEYE	<i>AESCULUS X 'HOMESTEAD'</i>	1½" CAL	10-12' HGT.	B&B, SPACE PER PLANS	M
2	BEPA	PAPER BIRCH	<i>BETULA PAPIRYFERA</i>	1½" CAL	10-12' HGT.	B&B, SPACE PER PLANS	M
8	BEPAR	RENAISSANCE REFLECTION PAPER BIRCH	<i>BETULA PAPIRYFERA 'RENCI'</i>	1½" CAL	10-12' HGT.	B&B, SPACE PER PLANS	M
4	BEPLF	DAKOTA PINNACLE ASIAN WHITE BIRCH	<i>BETULA PLATYPHYLLA 'FARGO'</i>	1½" CAL	10-12' HGT.	B&B, SPACE PER PLANS	M
10	CEOC	COMMON HACKBERRY	<i>CELTIS OCCIDENTALIS</i>	1½"-2" CAL	10-12' HGT.	B&B, SPACE PER PLANS	L
4	CORAJ	SNOW MANTLE GRAY DOGWOOD	<i>CORNUS RACEMOSA 'JADE'</i>	1" CAL	8-10' HGT.	#15 MINIMUM	S
8	GLTRS	SHADEMASTER® HONEYLOCUST	<i>GLEDTISIA TRACANTHOS 'SHADEMASTER'</i>	1½"-2" CAL	10-12' HGT.	B&B, SPACE PER PLANS	L
1	JUNI	BLACK WALNUT	<i>JUGLANDS NIGRA</i>	1½"-2" CAL	10-12' HGT.	B&B, SPACE PER PLANS	L
12	POACH	HIGHLAND COTTONWOOD	<i>POPULUS ACCUMINATA X SARGENTII 'HIGHLAND'</i>	1½" CAL	10-12' HGT.	B&B, SPACE PER PLANS	L
2	QUMA	BUR OAK	<i>QUERCUS MACROCARPA</i>	1½" CAL	10-12' HGT.	B&B, SPACE PER PLANS	L
12	ULPL	VANGUARD ELM	<i>ULMAS 'PLAINSMAN'</i>	1½"-2" CAL	10-12' HGT.	B&B, SPACE PER PLANS	L
<b>CONIFEROUS TREES</b>							
6	PIPU	BLACK HILLS SPRUCE	<i>PICEA PUNGENS 'BLACK HILLS'</i>	3-4" SPREAD	5' HGT.	B&B	L



ARCHITECT:  
**ARC** H I T E C T U R E  
 I N T E R N A T I O N A L  
 5908 SHERIDAN LAKE ROAD  
 RAPID CITY, SOUTH DAKOTA 57702 TEL: 605-341-2066 FAX: 605-341-3651  
 WWW.ARCINTERNATIONAL.COM  
**BRINGING ARCHITECTURE TO YOUR WORLD**

STRUCTURAL ENGINEER:  
 3202 West Main  
 Suite C  
 Rapid City, South Dakota 57702  
 605.343.9606  
**Albertson Engineering Inc.**

MECHANICAL/ELECTRICAL ENGINEER:  
**WPE** WEST PLAINS ENGINEERING, INC.  
 1750 RAND ROAD ■ RAPID CITY, SD 57702  
 PHONE: (605) 348-7455 ■ FAX: (605) 348-9445  
 WWW.WESTPLAINSENGINEERING.COM  
 RAPID CITY, SD ■ BOSTON, MA ■ CHICAGO, IL ■ DENVER, CO

LANDSCAPE ARCHITECT:  
**Wyss Associates, Inc.**  
 Landscape Architecture - Golf Course Architecture - Parks & Recreation Design  
 728 South Street, Rapid City, South Dakota 57701-3570 605.348.2289 Fax 605.348.6506  
 email: info@wyssassociates.com web: www.wyssassociates.com

CIVIL ENGINEER:  
**F M G, Inc.**  
 Consulting Civil Engineers  
 3700 Sturgis Road  
 Rapid City, SD 57702-0317  
 (605) 342-4105 FAX (605) 342-4222  
 www.fmgengineering.com

FOOD SERVICE CONSULTANT:  
**ROGER KRUSE ASSOC.**  
 food facilities planning  
 Omaha, NE  
 © COPYRIGHT ROGER KRUSE ASSOCIATES

DATE: JUNE 9, 2010  
 PROJECT MANAGER: MATTHEW D. FRIDELL  
 PROJECT NUMBER: 2007-026

**PRELIMINARY**  
 Not for Construction  
 (C.U.P. Submittal)

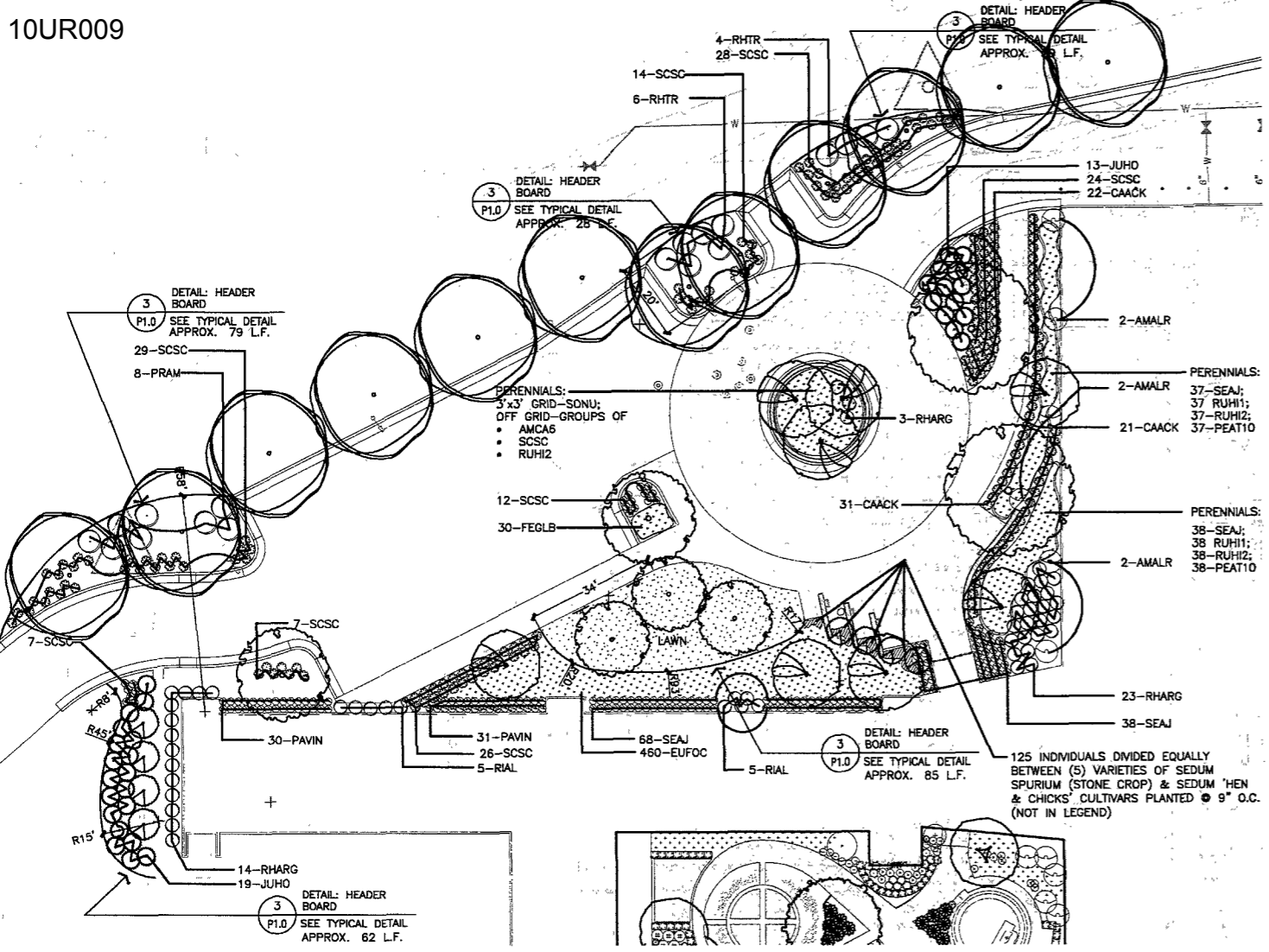
**TERRA SANCTA**  
**SPIRITUAL LIFE**  
**CENTER**  
 RAPID CITY, SOUTH DAKOTA

OVERALL PLANTING PLAN

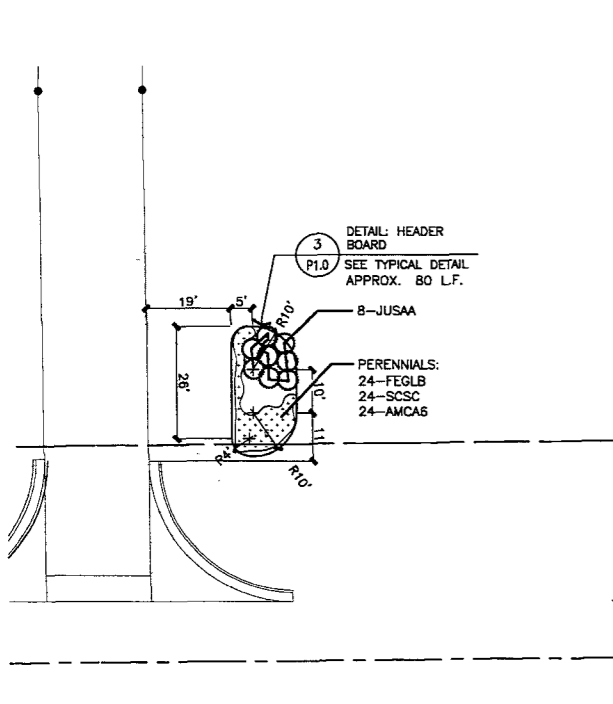
**L4.1**

SHRUB AND PERENNIAL PLANTING SCHEDULE

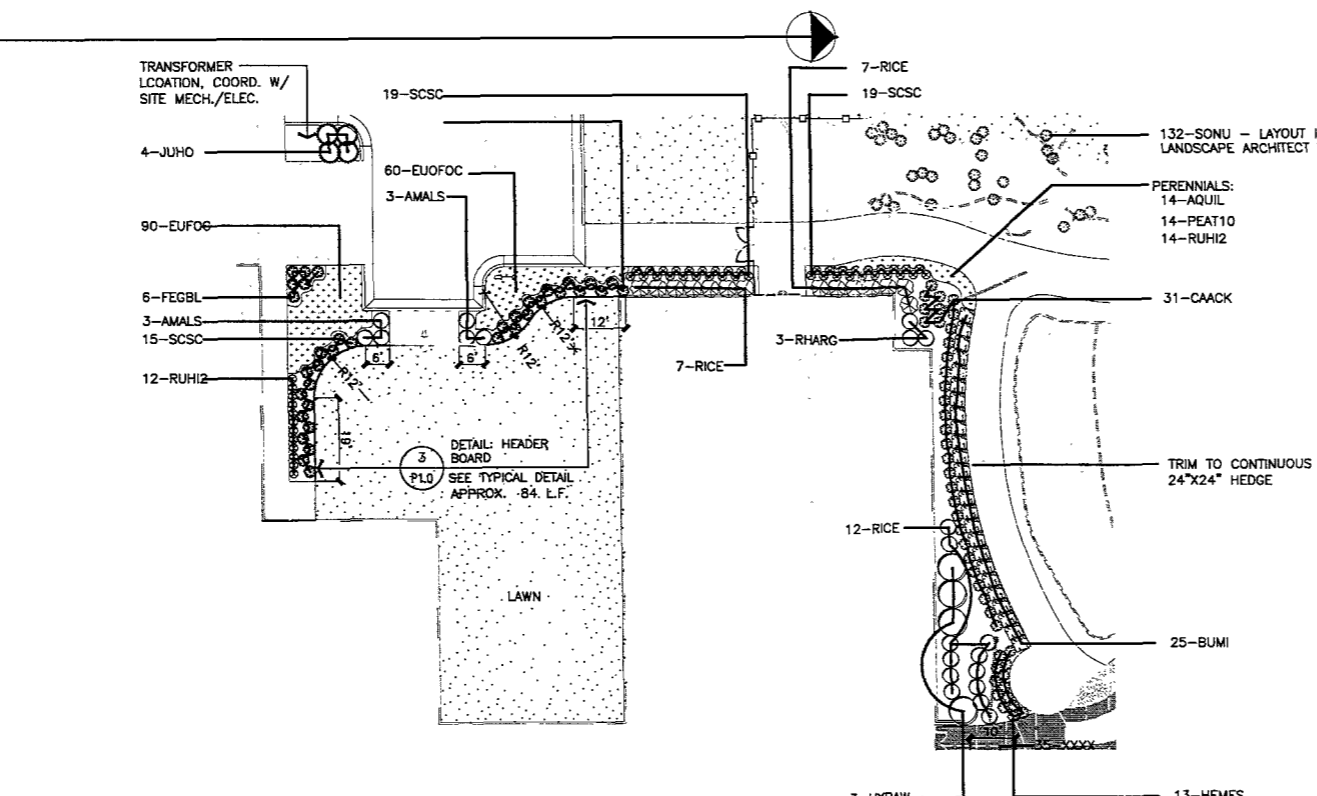
QTY.	SYMBOL	COMMON NAME	BOTANICAL NAME	SIZE	COMMENTS
<b>DECIDUOUS SHRUBS</b>					
6	AMALR	REGENT JUNE BERRY	AMELANCHIER ALNIFOLIA 'REGENT'	#2 (2 GAL.)	SPACE PER PLANS
10	AMALS	SASKATOON SERVICE BERRY	AMELANCHIER ALNIFOLIA	#2 (2 GAL.)	SPACE PER PLANS
41	BUMI	WINTER GREEN BOXWOOD	BUXUS MICROPHYLLA	#1 (1 GAL.)	SPACE PER PLANS
14	HYPAW	WHITE MOTH HYDRANGEA	HYDRANGEA PANICULATA 'WHITE MOTH'	#1 (1 GAL.)	SPACE PER PLANS
49	PRAM	AMERICAN PLUM	PRUNUS AMERICANA	#3 (3 GALLON)	SPACE PER PLANS
117	RHARG	GRO-LOW FRAGRANT SUMAC	RHUS AROMATICA 'GRO-LOW'	#1 (1 GAL.)	SPACE PER PLANS
10	RHTR	THREELEAF SUMAC	RHUS TRILOBATA	#1 (1 GAL.)	SPACE PER PLANS
37	RIAL	ALPINE CURRANT	RIBES ALPINUM	#2 (2 GAL.)	SPACE PER PLANS
13	RIAU	YELLOW FLOWERING CURRANT	RIBES AUREUM	#2 (2 GAL.)	SPACE PER PLANS
63	RICE	WAX CURRANT	RIBES CEREUUM	#2 (2 GAL.)	SPACE PER PLANS
550	EUFOC	EUONYMUS FORTUNEI 'COLORATUS'	PURPLE WINTERCREEPER	#1 (1 GAL.)	3' O.C.
<b>CONIFEROUS SHRUBS</b>					
101	JUHO	CREeping JUNIPER	JUNIPERUS HORIZONTALIS	#2 (2 GAL.)	SPACE PER PLANS
54	JUSAA	ARCADIA JUNIPER	JUNIPERUS SABINA 'ARCADIA'	#2 (2 GAL.)	SPACE PER PLANS
<b>GRASSES</b>					
185	PAVIN	SWITCHGRASS	PANICUM VIRGATUM 'SHENANDOAH'	#1 (1 GAL.)	SPACE PER PLANS
258	CAACK	FEATHER REED GRASS	CALAMAGROSIS ACUTIFOLIA 'KARL FOERSTER'	#1 (1 GAL.)	SPACE PER PLANS
205	FEGLB	BOULDER BLUE FESCUE	FESTUCA GLAUCA 'BOULDER BLUE'	#SP4	SPACE PER PLANS
519	RSCSC	LITTLE BLUESTEM	SCHIZACHYRIUM SCOPARIUS	#SP4	SPACE PER PLANS
190	SONU	INDIAN GRASS	SORGHASTRUM NUTANS	#1 (1 GAL.)	SPACE PER PLANS
<b>PERENNIAL/FORBES</b>					
14	AQUL	COLUMBINE	AQUILEGIA	#SP5	SPACE PER PLANS
213	AMCA6	LEADPLANT AMORPHA	AMORPHA CANESCENS	#SP5	SPACE PER PLANS
119	PEAT10	RUSSIAN SAGE	PEROVSKIA ATRIPLICIFOLIA	#SP5	SPACE PER PLANS
169	RUH2	BLACK EYED SUSAN	RUDBECKIA HIRTA	#SP5	SPACE PER PLANS
93	RUH1	IRISH EYES RUDBECKIA	RUDBECKIA HIRTA 'IRISH EYES'	#SP5	SPACE PER PLANS
189	SEAJ	AUTUMN JOY	SEDUM 'AUTUMN JOY'	#SP5	SPACE PER PLANS



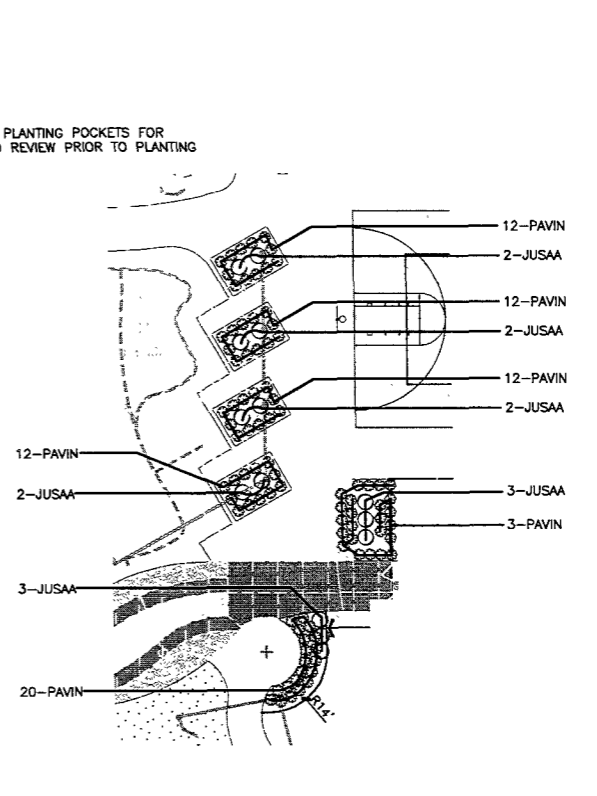
1 SPIRITUAL LIVING CENTER ENTRY COURT  
L4.2 SCALE: 1"=20'



2 SPIRITUAL LIVING CENTER ENTRANCE  
L4.2 SCALE: 1"=20'



3 ENLARGED PLANTING PLAN  
L4.2 SCALE: 1"=20'



4 ENLARGED PLANTING PLAN  
L4.2 SCALE: 1"=20'

ARCHITECT:

**ARC** HITECTURE  
INTERNATIONAL

5808 SHERIDAN LAKE ROAD  
RAPID CITY, SOUTH DAKOTA 57702 TEL: 605-341-2066 FAX: 605-341-3661 www.ARCint.com

BRINGING ARCHITECTURE TO YOUR WORLD

STRUCTURAL ENGINEER:

**Albertson Engineering Inc.**

3202 West Main  
Suite C  
Rapid City, South Dakota 57702  
605.343.8606

MECHANICAL/ELECTRICAL ENGINEER:

**WEST PLAINS ENGINEERING, INC.**

1750 RAND ROAD ■ RAPID CITY, SD 57702  
PHONE: (605) 340-7425 ■ FAX: (605) 340-9445  
www.westplainsengineering.com  
RAPID CITY, SD ■ BOULDER, CO ■ GARDEN CITY, MO ■ CEDAR RAPIDS, IA

LANDSCAPE ARCHITECT:

**Wyss Associates, Inc.**

Landscape Architecture • Civil/Coastal Architecture • Parks & Recreation Design  
728 Sixth Street, Rapid City, South Dakota 57701-3870 605-348-2286 Fax 605-348-8208  
email: info@wyssassociates.com web: www.wyssassociates.com

CIVIL ENGINEER:

**F M G, Inc.**  
Consulting Civil Engineers  
3700 Sturgis Road  
Rapid City, SD 57702-0317  
(605) 342-4105 FAX (605) 342-4222  
www.fmgengineering.com

FOOD SERVICE CONSULTANT:  
**ROGER KRUSE ASSOC.**  
food facilities planning  
Omaha, NE

DATE: JUNE 9, 2010

PROJECT MANAGER: MATTHEW D. FRIDELL

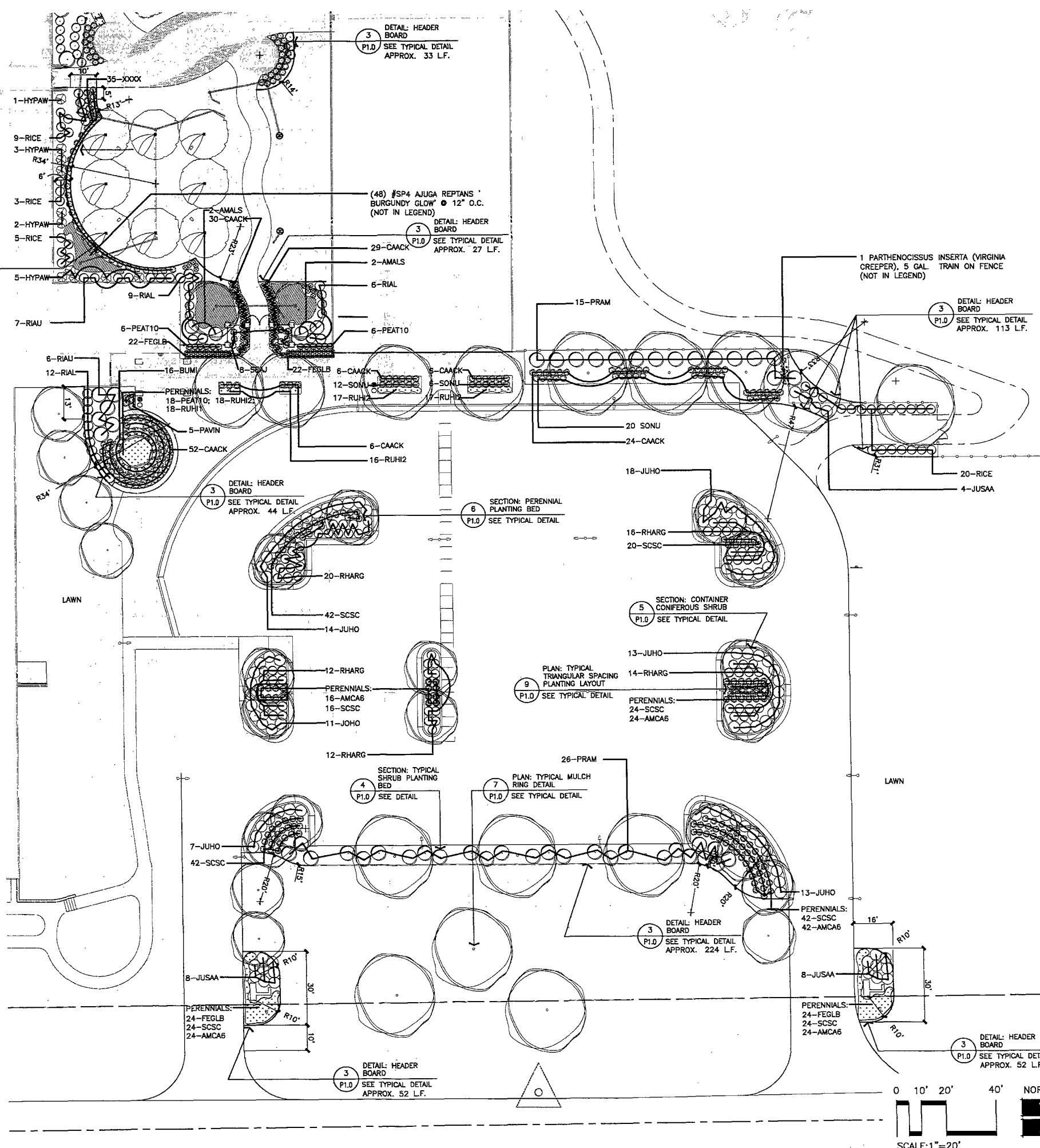
PROJECT NUMBER: 2007-026

**PRELIMINARY**  
Not for Construction  
(C.U.P. Submittal)

**TERRA SANCTA**  
**SPIRITUAL LIFE**  
**CENTER**  
RAPID CITY, SOUTH DAKOTA

SPIRITUAL LIVING CENTER  
PLANTING PLAN

**L4.2**



ARCHITECT:

**ARC** HITECTURE INTERNATIONAL

5805 SHERIDAN LAKE ROAD  
RAPID CITY, SOUTH DAKOTA 57702 TEL: 605-341-2066 FAX: 605-341-3651

BRINGING ARCHITECTURE TO YOUR WORLD

---

STRUCTURAL ENGINEER:

**Albertson Engineering Inc.**

3202 West Main Suite C  
Rapid City, South Dakota 57702  
805.343.9806

---

MECHANICAL/ELECTRICAL ENGINEER:

**WPE** WEST PLAINS ENGINEERING, INC.

1759 RAND ROAD • RAPID CITY, SD 57702  
PHONE: (605) 348-7465 • FAX: (605) 348-9446  
www.westplainsengineering.com

---

LANDSCAPE ARCHITECT:

**Wyss Associates, Inc.**

Landscape Architecture - Golf Course Architecture - Parks & Recreation Design  
728 5th Street Rapid City, South Dakota 57701-3670 605.348.2289 Fax 605.348.8508  
email info@wyssassociates.com web www.wyssassociates.com

---

CIVIL ENGINEER:

**F M G, Inc.**  
Consulting Civil Engineers

3700 Sturgis Road  
Rapid City, SD 57702-0317  
(605) 342-4105 FAX (605) 342-4222  
www.fmgengineering.com

---

FOOD SERVICE CONSULTANT:

**ROGER KRUSE ASSOC.**  
food facilities planning  
Omaha, NE

© COPYRIGHT ROGER KRUSE ASSOCIATES

DATE: JUNE 9, 2010

PROJECT MANAGER: MATTHEW D. FRIDELL

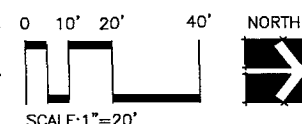
PROJECT NUMBER: 2007-026

**PRELIMINARY**  
Not for Construction  
(C.U.P. Submittal)

**TERRA SANCTA  
SPIRITUAL LIFE  
CENTER**  
RAPID CITY, SOUTH DAKOTA

PARKING & SCHOOL ENTRY  
PLANTING PLAN

**L4.3**



KEY - SEE SPECIFICATIONS

SEED: WILDFLOWER MEADOW GRASSES & SEEDED LAWN MIX (51,325 SF)

SEED: LAWN MIX (5.15 ACRES)

SODDED LAWN AREA (5,570 SF)

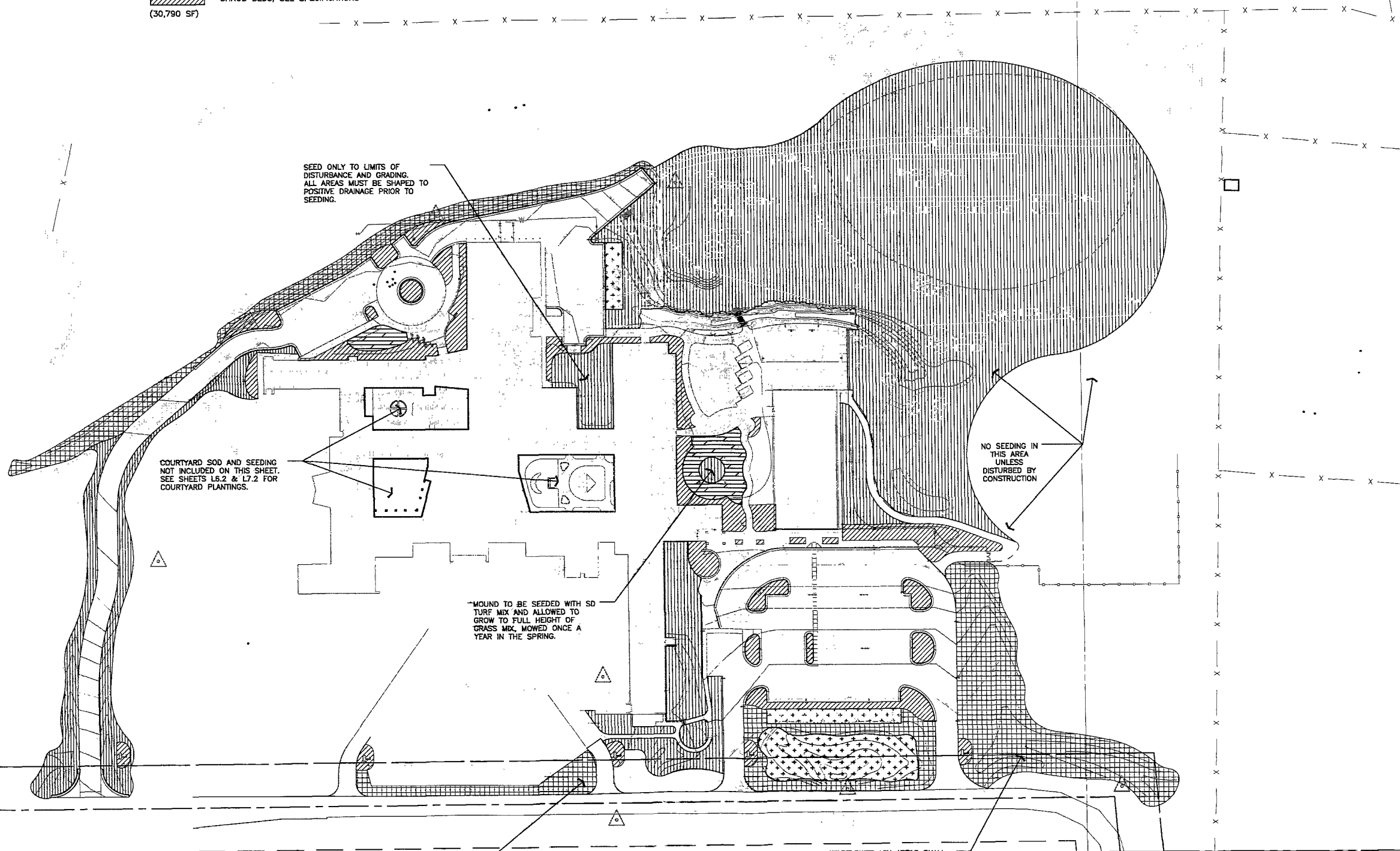
SEED: BIORETENTION AREA (12,000 SF)

PLANTING SOILS AT ISLANDS AND PERENNIAL/SHRUB BEDS, SEE SPECIFICATIONS (30,790 SF)

GENERAL NOTES:

1. ALL SEED TO BE DELIVERED AND TAGGED IN CERTIFIED BAGS AS SPECIFIED.
2. ALL AREAS THAT ARE TRENCHED FOR UTILITIES OUTSIDE OF AREAS INDICATED HEREIN SHALL BE SEEDED WITH APPROPRIATE SEED. COORDINATE WITH SEEDING CONTRACTOR.

SECTION 1/16TH LINE



SEED ONLY TO LIMITS OF DISTURBANCE AND GRADING. ALL AREAS MUST BE SHAPED TO POSITIVE DRAINAGE PRIOR TO SEEDING.

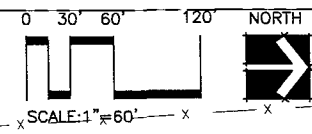
COURTYARD SOD AND SEEDING NOT INCLUDED ON THIS SHEET. SEE SHEETS L6.2 & L7.2 FOR COURTYARD PLANTINGS.

MOUND TO BE SEEDED WITH SD TURF MIX AND ALLOWED TO GROW TO FULL HEIGHT OF GRASS MIX. MOWED ONCE A YEAR IN THE SPRING.

NO SEEDING IN THIS AREA UNLESS DISTURBED BY CONSTRUCTION

SEED ONLY TO LIMITS OF DISTURBANCE AND GRADING. ALL AREAS MUST BE SHAPED TO POSITIVE DRAINAGE PRIOR TO SEEDING.

WILDFLOWER MIX AREAS SHALL BE ALLOWED TO FLOWER PRIOR TO MOWING EACH YEAR.



SW1/4-NE1/4

ARCHITECT:

**ARC**HITECTURE INTERNATIONAL  
 5808 SHERIDAN LAKE ROAD RAPID CITY, SOUTH DAKOTA 57702 TEL: 605-341-2366 FAX: 605-341-3651  
 BRINGING ARCHITECTURE TO YOUR WORLD

STRUCTURAL ENGINEER:  
**Albertson Engineering Inc.**  
 3202 West Main Suite C Rapid City, South Dakota 57702 605.343.9806

MECHANICAL/ELECTRICAL ENGINEER:  
**WEST PLAINS ENGINEERING, INC.**  
 1750 RAND ROAD RAPID CITY, SD 57702 PHONE: (605) 348-7455 FAX: (605) 348-9445 www.westplainsengineering.com

LANDSCAPE ARCHITECT:  
**Wyss Associates, Inc.**  
 Landscape Architecture - Golf Course Architecture - Parks & Recreation Design  
 728 Sixth Street Rapid City, South Dakota 57701-3870 605.348.2288 Fax 605.348.6000 email info@wyssassociates.com web www.wyssassociates.com

CIVIL ENGINEER:  
**F M G, Inc.**  
 Consulting Civil Engineers 3700 Sturgis Road Rapid City, SD 57702-0317 (605) 342-4105 FAX (605) 342-4222 www.fmgengineering.com

FOOD SERVICE CONSULTANT:  
**ROGER KRUSE ASSOC.**  
 food facilities planning Omaha, NE

DATE: JUNE 9, 2010

PROJECT MANAGER: MATTHEW D. FRIDELL

PROJECT NUMBER: 2007-026

**PRELIMINARY**  
Not for Construction (C.U.P. Submittal)

**TERRA SANCTA SPIRITUAL LIFE CENTER**  
RAPID CITY, SOUTH DAKOTA

OVERALL TURFING PLAN

**L5.1**