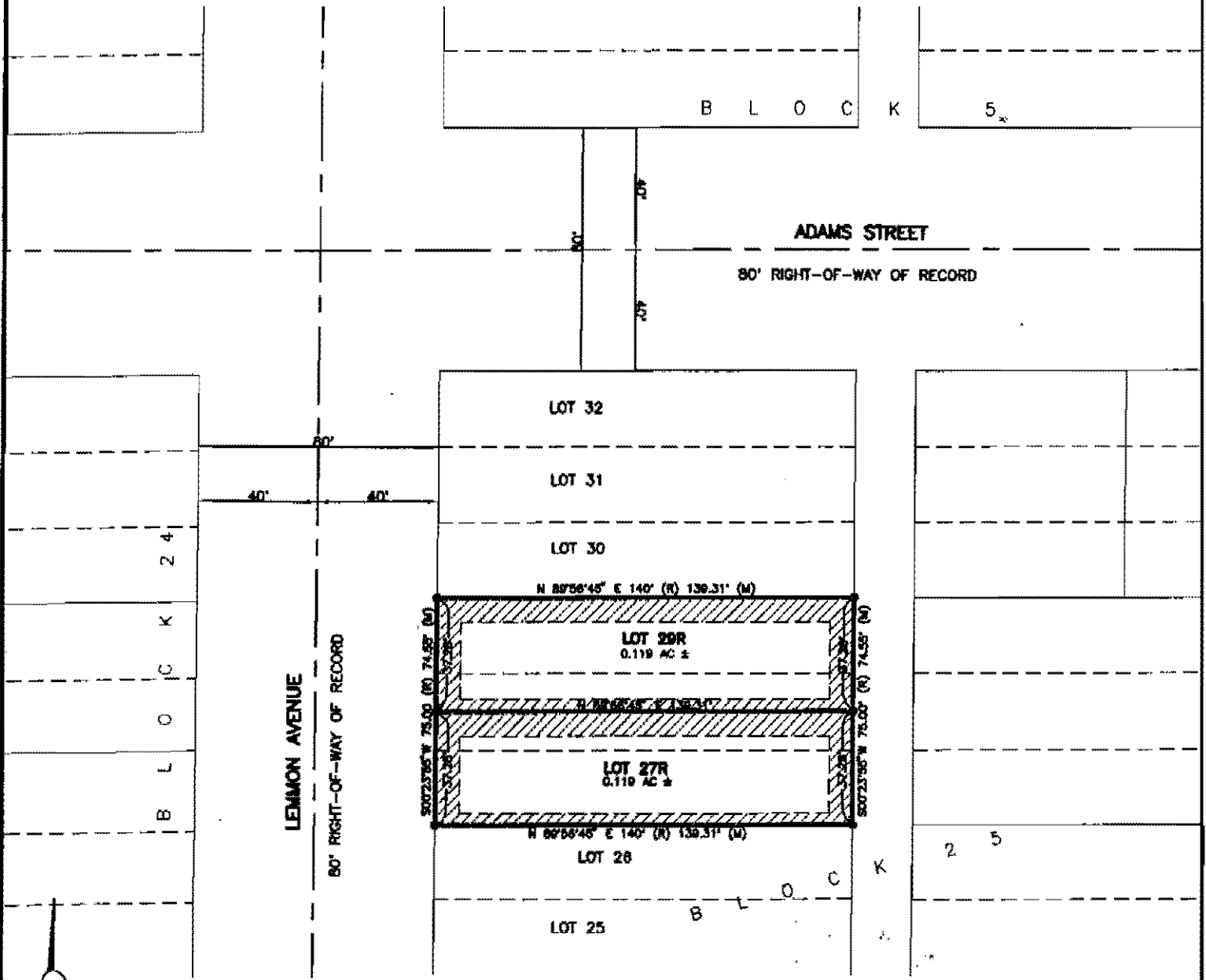


PLAT OF
**LOTS 27R AND 29R OF BLOCK 25 OF
 THE NORTH-RAPID ADDITION TO RAPID CITY**

(FORMERLY LOTS 27, 28, AND 29 OF BLOCK 25 OF THE NORTH-RAPID ADDITION TO RAPID CITY)
 LOCATED IN THE E½ OF THE SE¼ OF THE NE¼ OF
 SECTION 36, T2N, R7E, B.H.M.,
 RAPID CITY, PENNINGTON COUNTY, SOUTH DAKOTA



NOTE: TOPOGRAPHY IS
 SCALED FROM
 USGS TOPOGRAPHY

RECEIVED

MAY 14, 2010

JUL 27 2010



SCALE: 1" = 50'

Rapid City Growth
 Management Department