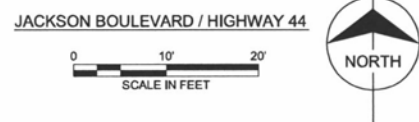
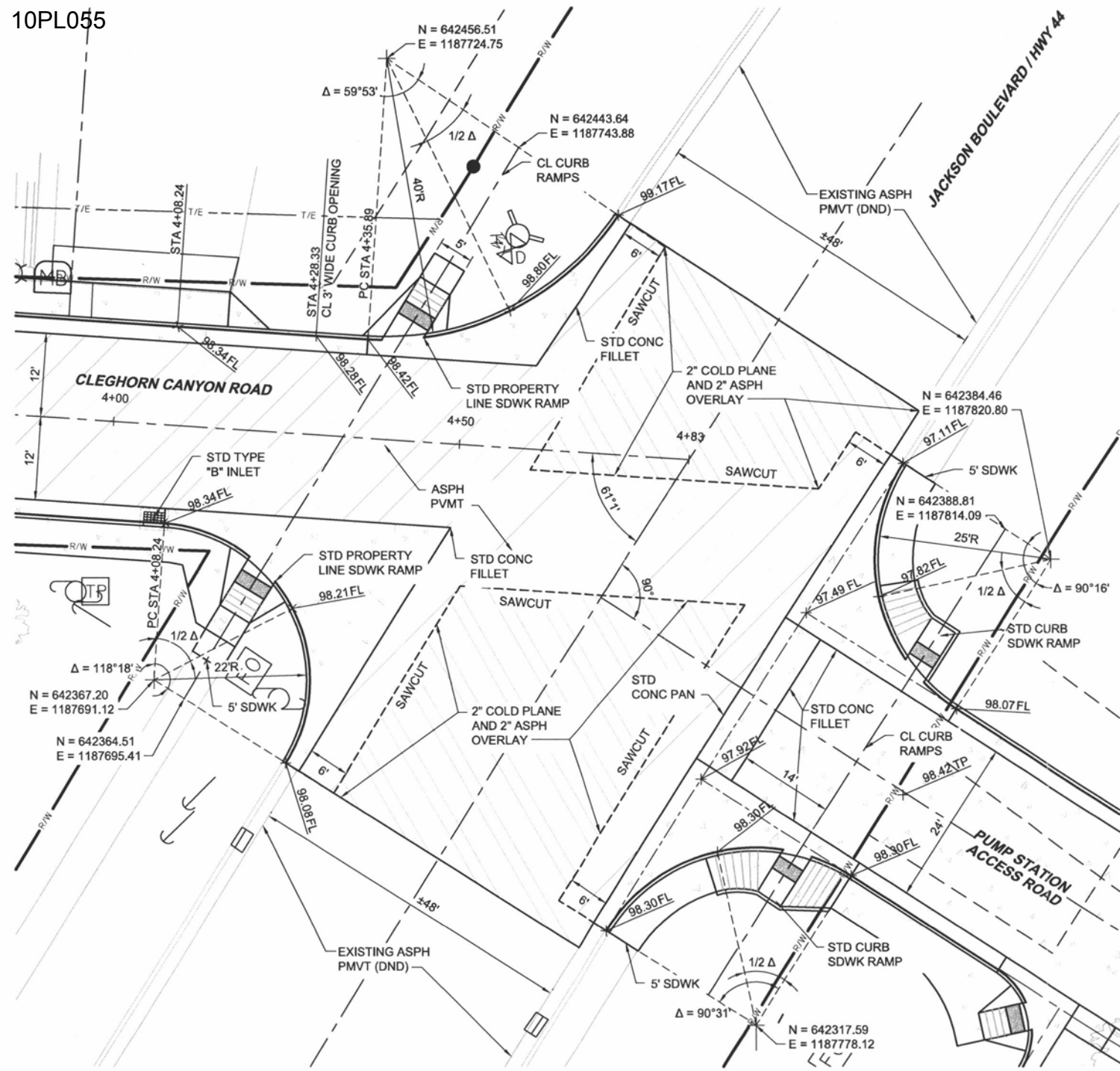
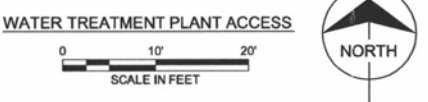
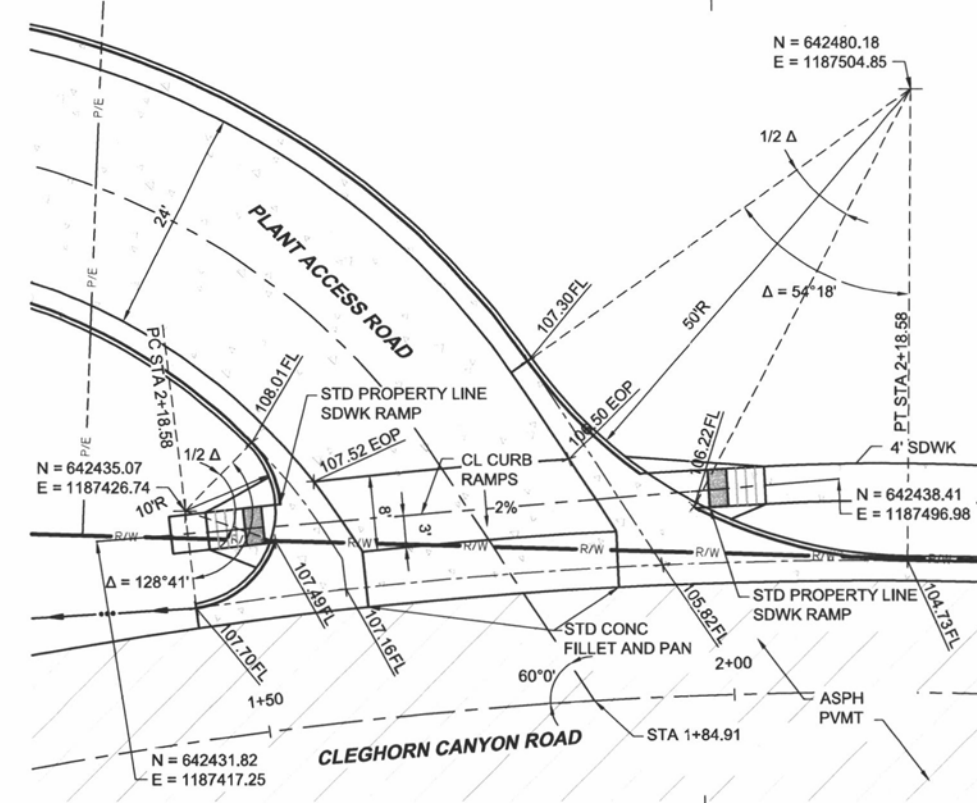
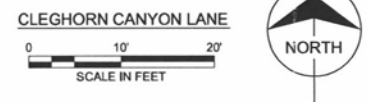
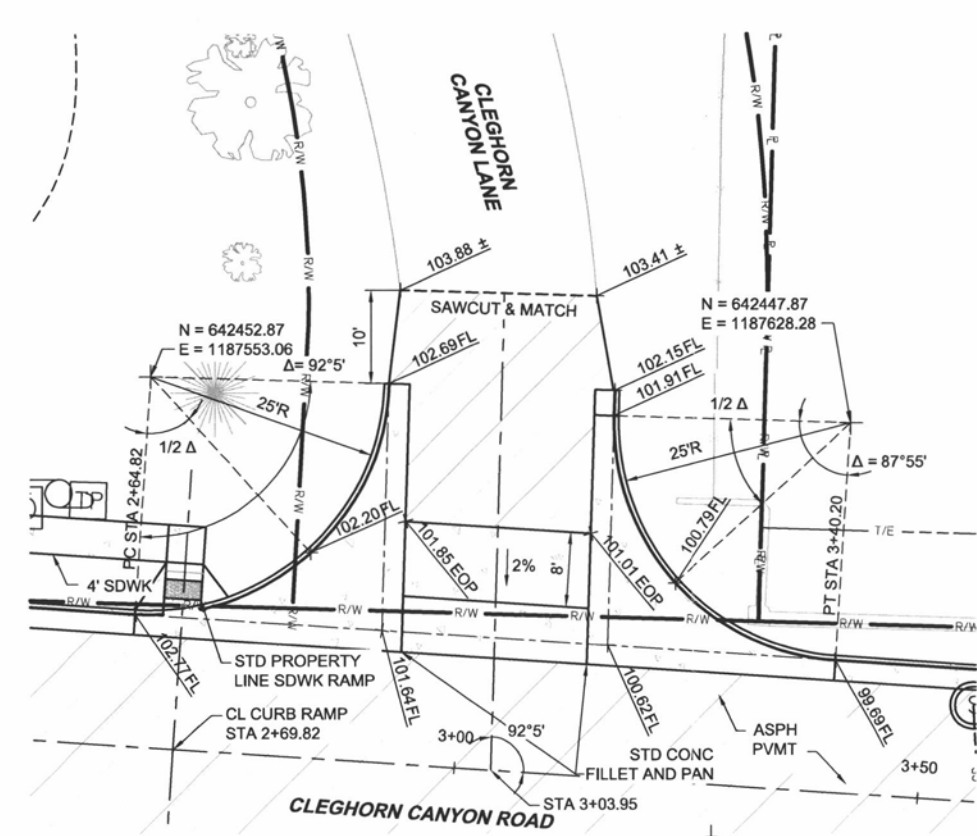


10PL055



NOTE:
 1. FOR CLARITY, 3300 FEET HAS BEEN REMOVED FROM THE SPOT ELEVATIONS SHOWN ON THIS PLAN.



no.	date	by	ckd	description

PRELIMINARY - NOT FOR CONSTRUCTION



date JULY, 2010	detailed G. GARCIA
designed J. SHEPHERD	checked



JACKSON SPRINGS WATER TREATMENT PLANT
 PROJECT NO. WTP10-1858, CIP NO. 50789
 CLEGHORN CANYON ROAD
 INTERSECTION DETAILS

project 50328	contract
------------------	----------

drawing **C028** rev.

sheet 32 of 267 sheets
 file 50328C028.dwg

COPYRIGHT © 2010 BURNS & MCDONNELL ENGINEERING COMPANY, INC.