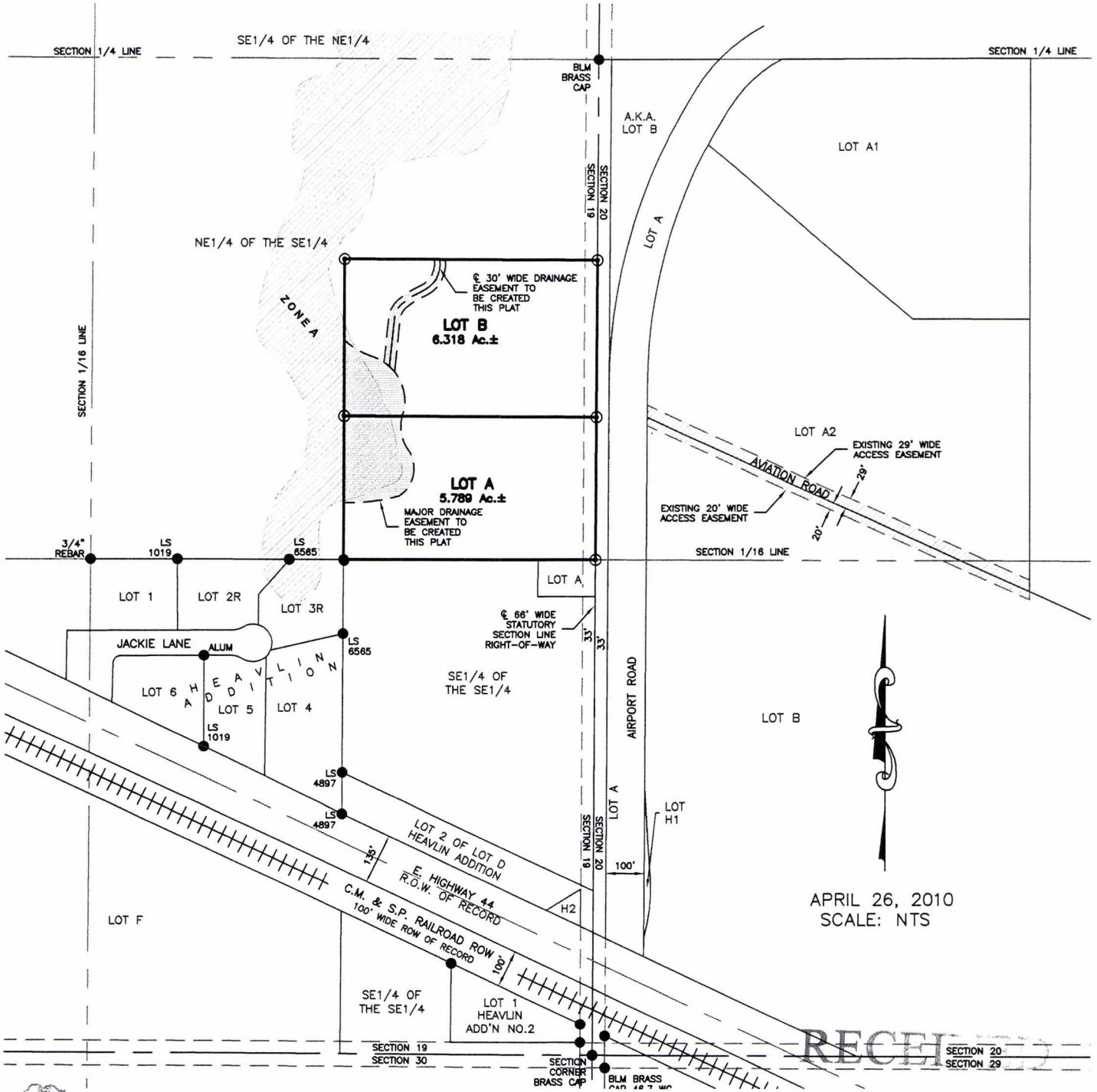


PLAT OF LOTS A AND B, WHITE EAGLE RANCH

(formerly a Portion of the NE1/4 of the SE1/4)
SECTION 19, T1N, R9E, BHM
PENNINGTON COUNTY, SOUTH DAKOTA



APRIL 26, 2010
SCALE: NTS

RECEIVED

SECTION 20
SECTION 29

RENNER & ASSOCIATES, LLC.

616 SIXTH ST. * RAPID CITY, SD 57701
PHONE: 605/721-7310 FAX: 605/721-7313
SPEARFISH OFFICE: 605/717-0016

APR 30 2010

Rapid City Growth
Management Department

