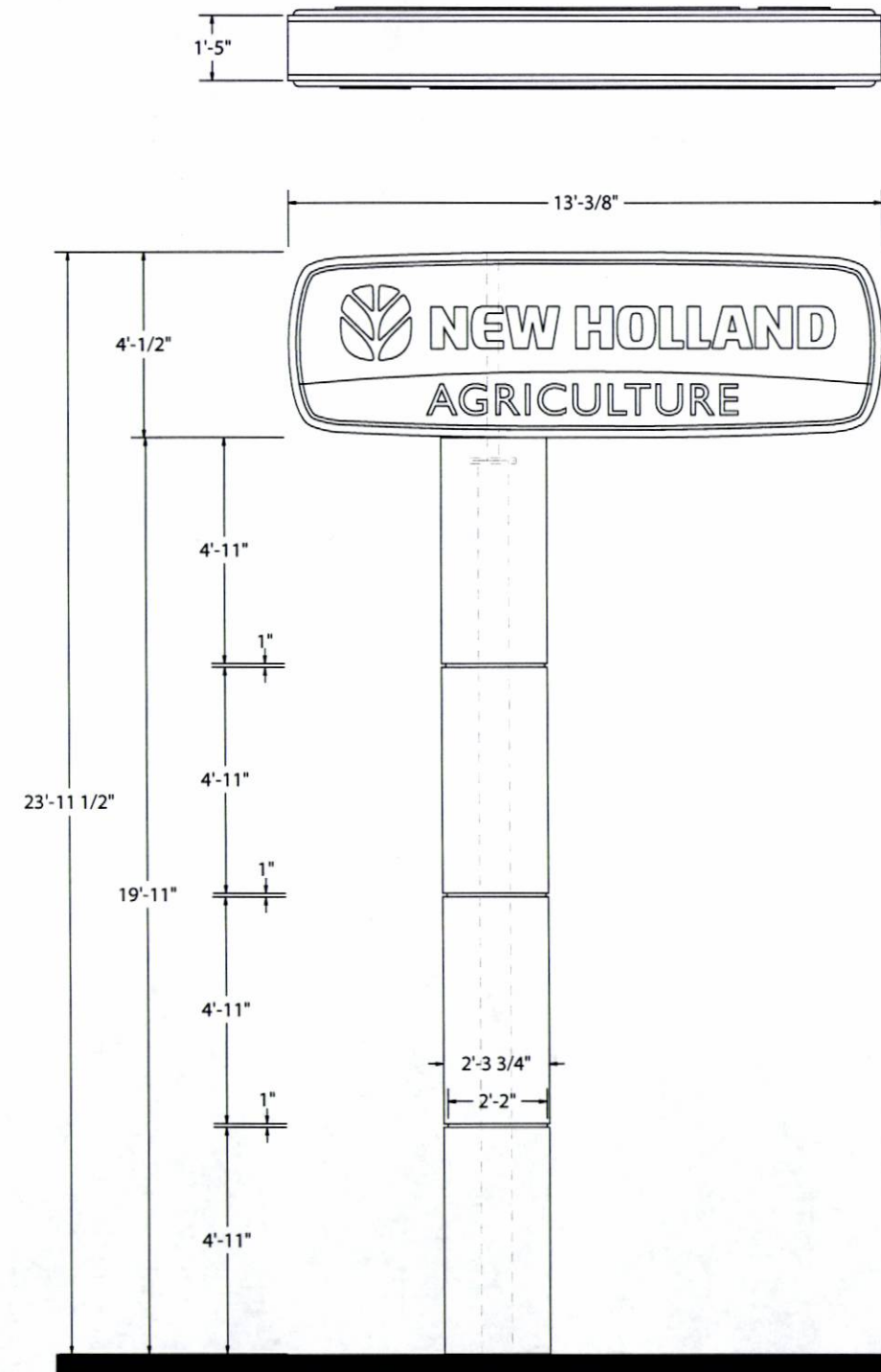
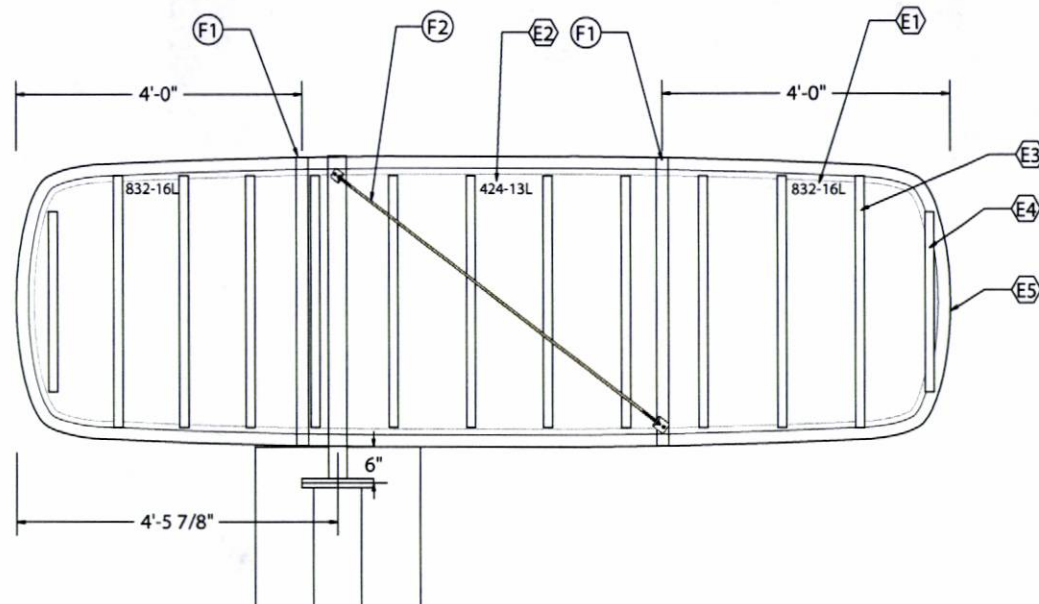


NEW HOLLAND DEALER INSTALL SIGNAGE
VARIOUS 10PD051

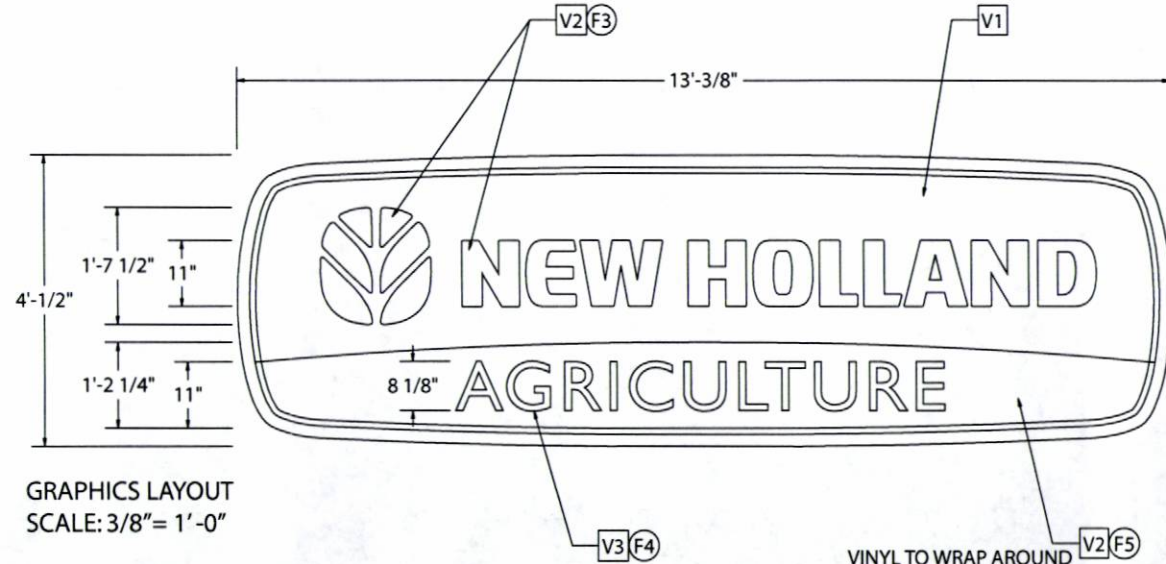


P-53 D/F PYLON PRODUCTION
SCALE: 1/4" = 1'-0"

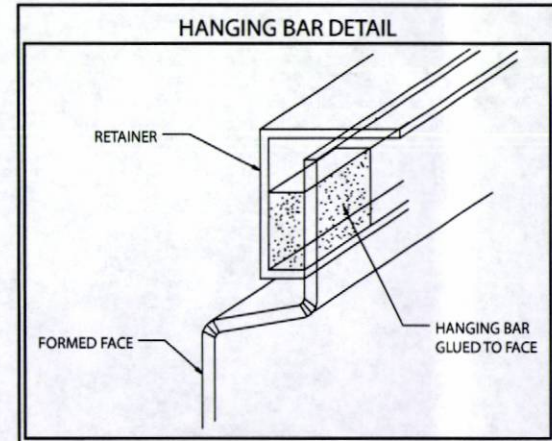
ENGINEERING DETAILS
SEE DRAWING: A-P-53 PROD PYL ENG



ELECTRICAL LAYOUT
SCALE: 3/8" = 1'-0"



GRAPHICS LAYOUT
SCALE: 3/8" = 1'-0"



VINYL TO WRAP AROUND
PAN EDGE UP TO RETAINER
HANGING BAR DETAIL

FINAL SIZING FOR ALL STRUCTURAL MEMBERS
(i.e. COLUMNS, MATCH PLATES, CONNECTION BOLTS,
ANCHOR BOLTS, FOUNDATIONS AND REINFORCE-
MENT) TO BE SIZED BY A LICENSED ENGINEER TO
MEET OR EXCEED ALL APPLICABLE LOCAL, STATE, AND
FEDERAL CODES, AND WIND LOAD REQUIREMENTS
SPECIFIC TO THEIR LOCATION.

- F1 FABRICATION NOTES
- V1 VINYL COLORS
- P1 PAINT NOTES
- E1 ELECTRICAL NOTES

TOTAL SQFT= 53'

PART # CNHP-53A

ESTIMATE # 58083

MATERIAL FOR FREE-STANDING SIGN

EXT. FILLER: .063" ALUMINUM

FRAMING: 2"x2"x3/16" ALUMINUM ANGLE

FACES: .177" ACRYLIC DR WHITE - PF

RETAINER: 2" ALUMINUM

LIGHTING: H.O. FLUORESCENT LAMPS

POLE COVERS: .090" ALUMINUM

SUPPORTS: 8"x8"x3/8" SQ. STEEL TUBE

STUB: 3"x3"x1/4" SQ. STEEL TUBE

EMB. ☒

COLOR FOR FREE-STANDING SIGN

FILLER: AKZO NOBEL YELLOW #SIGN40229 SATIN FINISH

RETAINER: AKZO NOBEL YELLOW #SIGN40229 SATIN FINISH

POLE COVER: AKZO NOBEL YELLOW #SIGN40229 SATIN FINISH

FACE BKGD: #7328 WHITE w/ NOTED 1ST SURFACE VINYL

- FABRICATION NOTES
- 1) 2"x2"x1/4" SQ. STEEL TUBE
 - 2) 3/8" SAG ROD
 - 3) 1/2" EMBOSSED LOGO & COPY
 - 4) FLAT COPY
 - 5) 1/2" EMBOSSED BACKGROUND
 - 6) X

- VINYL COLOR
- 1) ARLO YELLOW #2500-3393
 - 2) ARLO BLUE #2500-2533
 - 3) REVERSE WEED TO SHOW WHITE
 - 4) X
 - 5) X
 - 6) X

- ELECTRICAL NOTES
- 1) EESB-832-16L BALLASTS - (2) REQUIRED
 - 2) EESB-424-13L BALLAST - (1) REQUIRED
 - 3) F42T12CWHO LAMPS - (11) REQUIRED
 - 4) F30T12CWHO LAMPS - (2) REQUIRED
 - 5) DISCONNECT SWITCH

ELECTRICAL SPECIFICATIONS

PLASTIC SIGN BALLAST-HIGH OUTPUT 800 MA AT 120 VOLT 60 HZ

BALLAST #	LAMP CURRENT	MAX LINE CURRENT	MAX INPUT WATTS	OPEN CIRCUIT VOLTAGE
2 EESB-832-16L	.800	1.7	198	600
1 EESB-424-13L	.800	1.1	134	600
X X	X	X	X	X
TOTAL	4.5	530		

(1) 20 AMP-120 VOLT CIRCUIT REQUIRED

Underwriters
Laboratories Inc.
LISTED
ELECTRIC SIGN
COMPLIES TO UL 48

THIS ARTICLE IS INTENDED TO BE INSTALLED
IN ACCORDANCE WITH THE REQUIREMENTS
OF ARTICLE 600 OF THE NATIONAL ELECTRICAL
CODE AND/OR OTHER APPLICABLE LOCAL CODES.
THIS INCLUDES PROPER GROUNDING AND
BONDING OF THIS SIGN.

ENGINEER BOX

RECEIVED

JUL 30 2010

Rapid City Growth
Management Department

THIS DRAWING IS THE PROPERTY OF THOMAS SIGN & AWNING CO., INC. ALL RIGHTS TO ITS USE FOR REPRODUCTION ARE RESERVED BY THOMAS SIGN & AWNING CO., INC., CLEARWATER, FL

DATE 05.17.08 SHEET 1 OF 2

ARTIST RLR

SALES REP PT

STATE X

APPROVED ☐ DATE:

APPROVED AS NOTED ☐ DATE:

REVISE & RESUBMIT ☐ DATE:

INSTALLATION ADDRESS CITY X

REVISION 3: X

REVISION 4: X

CLIENT NEW HOLLAND

DESIGN NUMBER A-P-53 PROD PYL

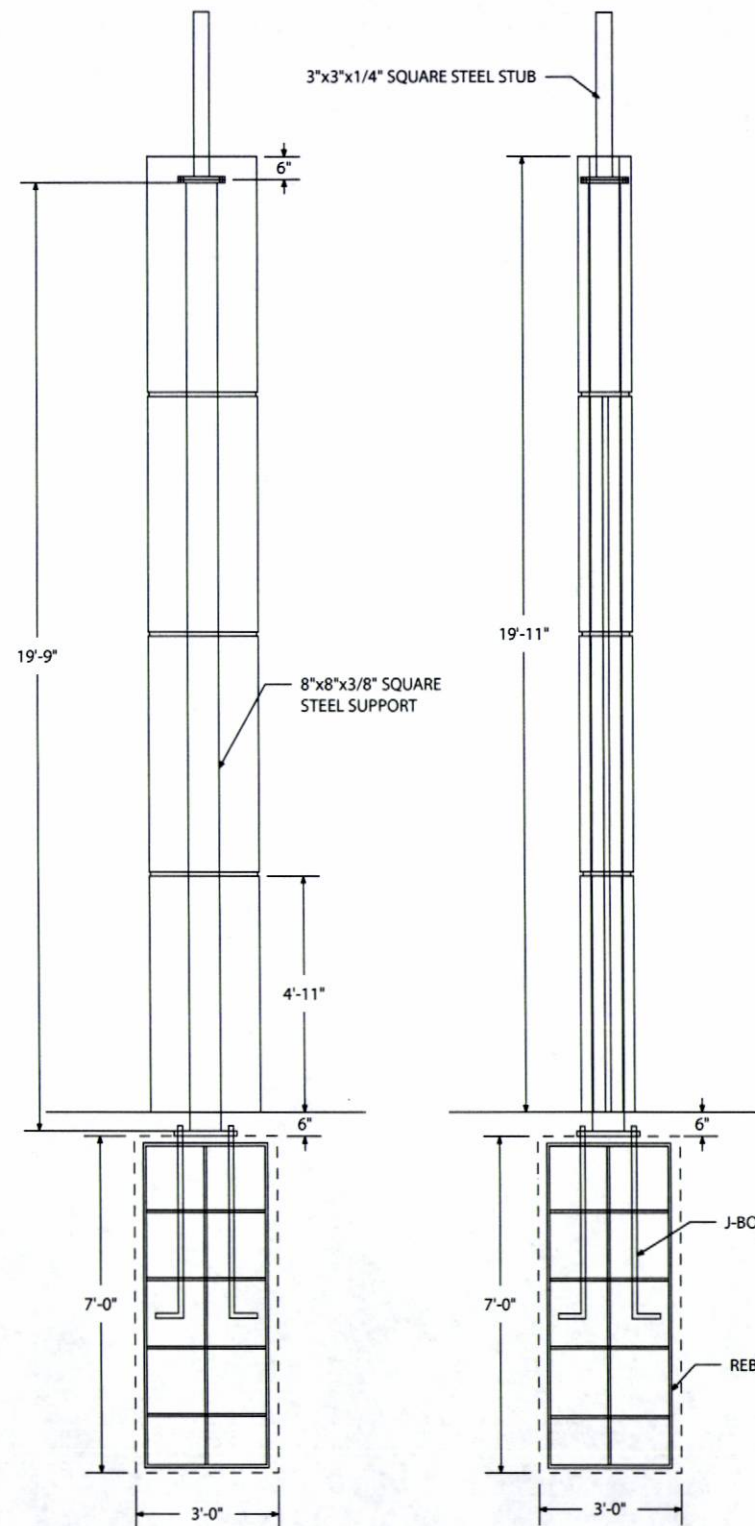
REVISION: YELLOW PMS 116 CHANGED TO AKZO NOBEL YELLOW

SIGN40229, 10/2/08 SLD

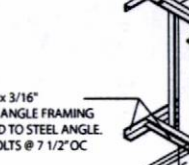
REVISION: X

THOMAS
SIGN & AWNING COMPANY, INC.
4590 118TH AVENUE NORTH • CLEARWATER, FL • 33762
800-526-3325 • 727-573-7757 • FAX 727-573-0328

10PD051



FINAL SIZING FOR ALL STRUCTURAL MEMBERS
(i.e. COLUMNS, MATCH PLATES, CONNECTION BOLTS,
ANCHOR BOLTS, FOUNDATIONS AND REINFORCE-
MENT) TO BE SIZED BY A LICENSED ENGINEER TO
MEET OR EXCEED ALL APPLICABLE LOCAL, STATE, AND
FEDERAL CODES, AND WIND LOAD REQUIREMENTS
SPECIFIC TO THEIR LOCATION.



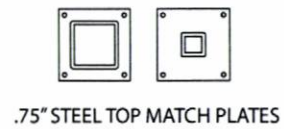
2" x 2" x 3/16"
ALUM. ANGLE FRAMING
BOLTED TO STEEL ANGLE.
1/2" BOLTS @ 7 1/2" OC

STEEL STUB 3" STEEL

SADDLE 2" x 2" x 3/16"
STEEL ANGLE WELDED TO TUBE

SEE TOP MATCH PLATE DETAILS

MAIN SUPPORT STEEL 8"



1.25" STEEL PLATE

SCALE: 1/4" = 1'-0"

OVER SECTION DETAIL

" = 1'-0"

Technical drawing of a door section detail. The drawing shows a cross-section of a door with a central handle and a lock mechanism. The door is made of .090" aluminum skin. The handle is made of 1/4" aluminum flat bar bracket. The lock mechanism is made of 1.5"x1.5"x3/16" steel angle clips. The door has a 2" electric hole. The dimensions are as follows: overall width is 2'-3 3/4", overall height is 1'-1 1/2", handle width is 7 1/2", handle height is 7/8", handle thickness is 3/4", handle to skin distance is 1 1/4", and handle to skin distance is 1 1/2".

Labels and dimensions:

- .090" ALUM RIBS
- 1 1/4"
- 7/8"
- 3/4"
- 1'-1 1/2"
- 7 1/2"
- 1.5"x1.5"x3/16" STEEL ANGLE CLIPS
- 1 1/2"
- 2" ELECTRIC HOLE
- .090" ALUM SKIN
- 1/4" ALUM FLAT BAR BRKT
- 2'-3 3/4"

Technical drawing of a square plate with the following dimensions and features:

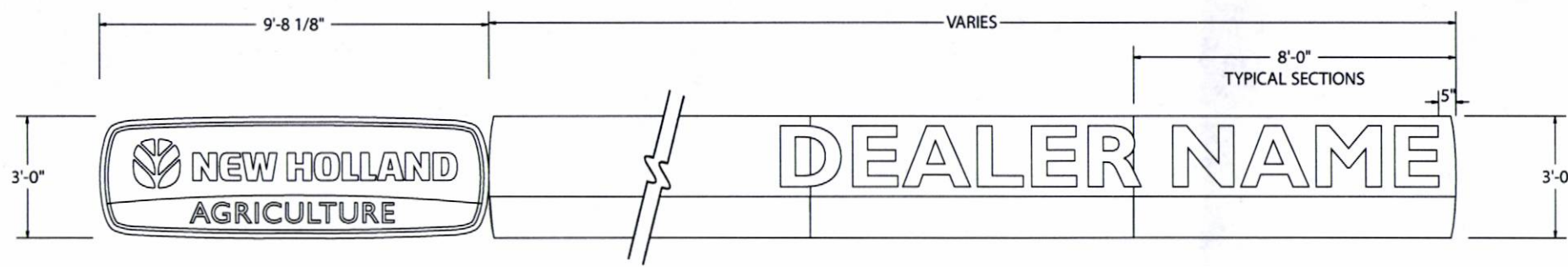
- Overall width: 1'-4"
- Overall height: 1'-4"
- Top flange width: 1 1/4"
- Inner square hole side length: 1'-1"
- Four 1 3/8" holes at the corners of the inner square.
- 2" ELECTRIC HOLE (indicated by a line pointing to the bottom-left corner hole).

RECEIVED
JUL 30 2010
Rapid City Growth
Management Department

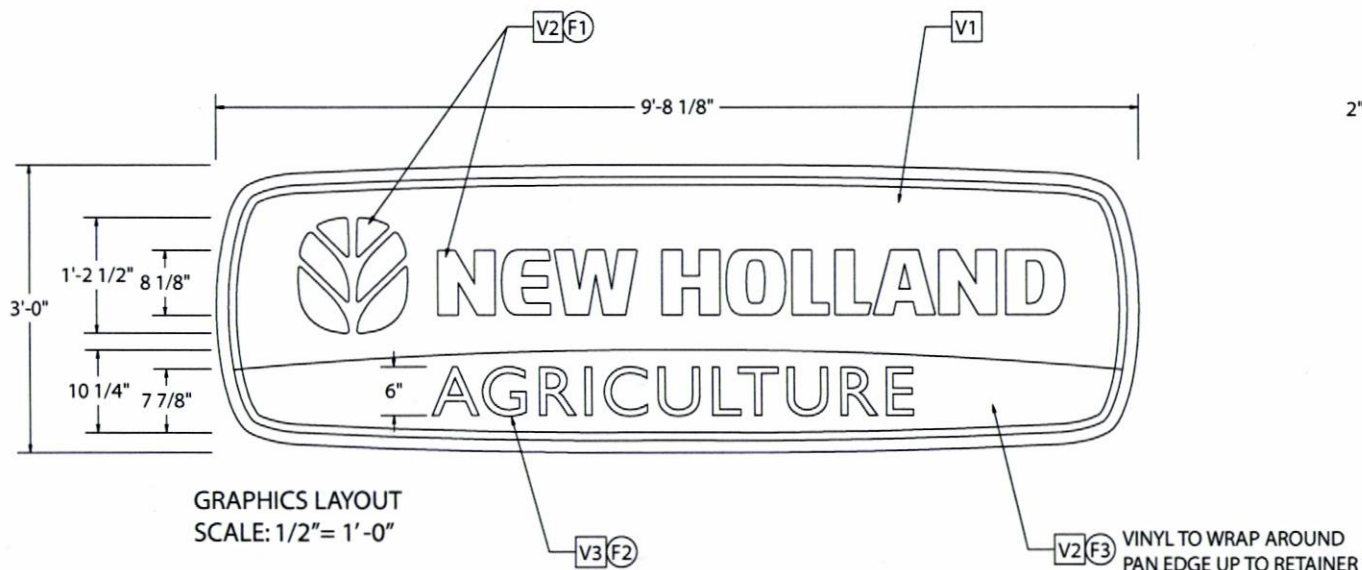
<div><div></div><div><div>THOMAS</div><div>SIGN & AWNING COMPANY, INC.</div></div><div>4590 118TH AVENUE NORTH • CLEARWATER, FL • 33762 800-526-3325 • 727-573-7757 • FAX 727-573-0328</div></div>										CLIENT NEW HOLLAND										INSTALLATION ADDRESS X										DATE 05.17.08																			
DESIGN NUMBER A-P-53 PROD PYL ENG										CITY X										ARTIST										SHEET 2 OF 2																			
REVISION: X										STATE X										SALES REP										PT										RLR									
REVISION: X										REVISION 3: X										<input type="checkbox"/> APPROVED										DATE:																			
REVISION: X										REVISION 4: X										<input type="checkbox"/> APPROVED AS NOTED										DATE:																			
																				<input type="checkbox"/> REVISE & RESUBMIT										DATE:																			

NEW HOLLAND- DEALER INSTALL SIGNAGE
10PD051

- F1 FABRICATION NOTES
- V1 VINYL COLORS
- P1 PAINT NOTES
- E1 ELECTRICAL NOTES



SIGN LAYOUT
SCALE: 1/4" = 1'-0"



GRAPHICS LAYOUT
SCALE: 1/2" = 1'-0"

SITE SPECIFIC DEALER DATA:

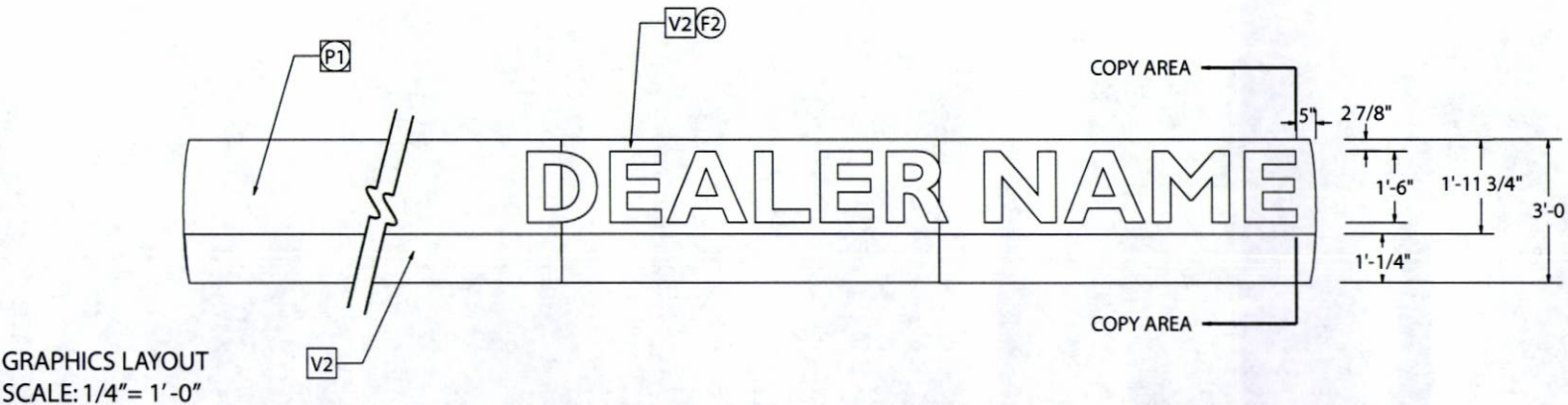
DEALER NAME

FASCIA BAND BILL OF MATERIALS	
END PANELS	X
CENTER PANELS	X
CENTER PANEL w/ RADIUS ENDS	X
TOTAL PANELS REQUIRED	X

CUSTOM SIGN NOTES:

N/A

FOR ENTIRE SIGN LAYOUT SEE DRAWING: 45XXX A ELEV



GRAPHICS LAYOUT
SCALE: 1/4" = 1'-0"

FW-30A & F-36A S/F NI WALL SIGN FASCIA BANDING
SCALE: NOTED

ENGINEERING DETAILS
SEE DRAWING: A-FW-30A & F-36A PROD WS FB ENG

FINAL SIZING FOR ALL STRUCTURAL MEMBERS
(i.e. COLUMNS, MATCH PLATES, CONNECTION BOLTS,
ANCHOR BOLTS, FOUNDATIONS AND REINFORCE-
MENT) TO BE SIZED BY A LICENSED ENGINEER TO
MEET OR EXCEED ALL APPLICABLE LOCAL, STATE, AND
FEDERAL CODES, AND WIND LOAD REQUIREMENTS
SPECIFIC TO THEIR LOCATION.

TOTAL SQFT=30+

NON-ILLUMINATED WALL SIGN

PART # CNHFW-30A

ESTIMATE # 58086

FASCIA BANDING

PART # CNHF-36A

ESTIMATE #61346

FONTS USED

1) GILL SANS BOLD

2) X

MATERIAL FOR WALL SIGN

FRAMING: 2"x2"x3/16" ALUMINUM ANGLE @ X O.C.

FACES: .177" ACRYLIC DR WHITE - PF EMB. ☒

RETAINER: 1 1/2"x2"x.080" ALUMINUM

WALL FASTENERS: PER ENGINEER

GRAPHICS: 1ST SURFACE VINYL GPS ☐

COLOR FOR WALL SIGN

RETAINER: AKZO NOBEL YELLOW #SIGN40229 SATIN FINISH

FACE BACKG: #7328 WHITE w/ NOTED 1ST SURFACE VINYL

MATERIAL FOR FASCIA BAND

FRAMING: 2"x2"x3/16" ALUMINUM ANGLE @ X O.C.

FACES: .090" ALUMINUM PANNED EMB. ☐

RETAINER: N/A

WALL FASTENERS: PER ENGINEER

GRAPHICS: PAINT/VINYL GPS ☐

COLOR FOR FASCIA BAND

RETAINER: N/A

FACE BACKG: AKZO NOBEL YELLOW #SIGN40229 SATIN FINISH

FABRICATION NOTES

1) 1/2" EMBOSSED COPY

2) FLAT COPY

3) 1/2" EMBOSSED BACKGROUND

4) X

5) X

6) X

VINYL COLOR

1) ARLO YELLOW #2500-3393

2) ARLO BLUE #2500-2533

3) REVERSE WEEDED TO SHOW WHITE

4) X

5) X

6) X

PAINT COLORS

1) AKZO NOBEL YELLOW #SIGN40229 SATIN FINISH

2) X

3) X

4) X

ENGINEER BOX

RECEIVED

JUL 30 2010

Rapid City Growth
Management Department

DATE 9.17.08 SHEET 1 OF 2

INSTALLATION ADDRESS CITY X

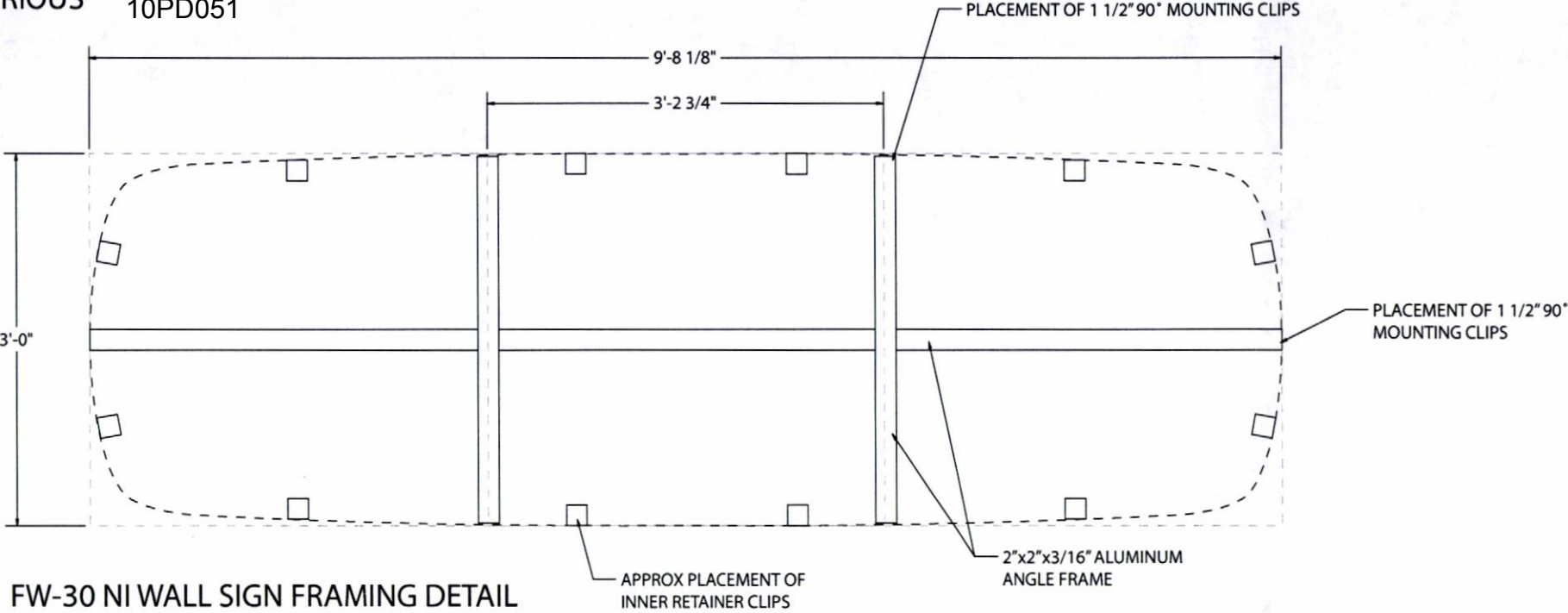
CLIENT NEW HOLLAND-

DESIGN NUMBER A FW 30A AND F 36A PROD WS FB

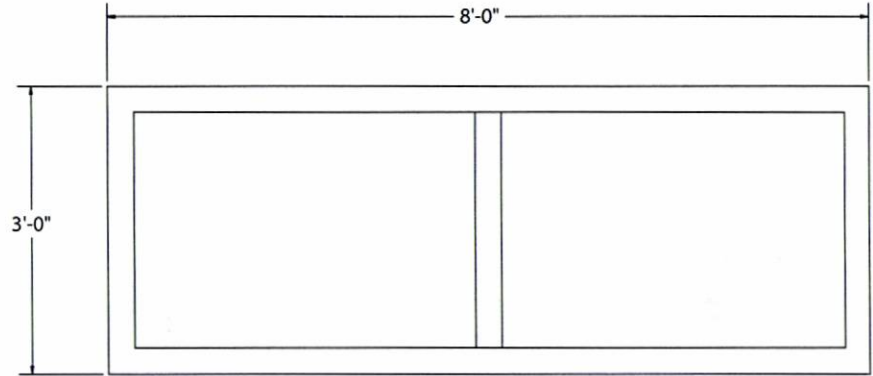
REVISION: YELLOW PMS 116 CHANGED TO AKZO NOBEL YELLOW # SIGN40229 10/2/08 SLD

REVISION: ADD PART #5 TO MASTER 11/12/08 SLD

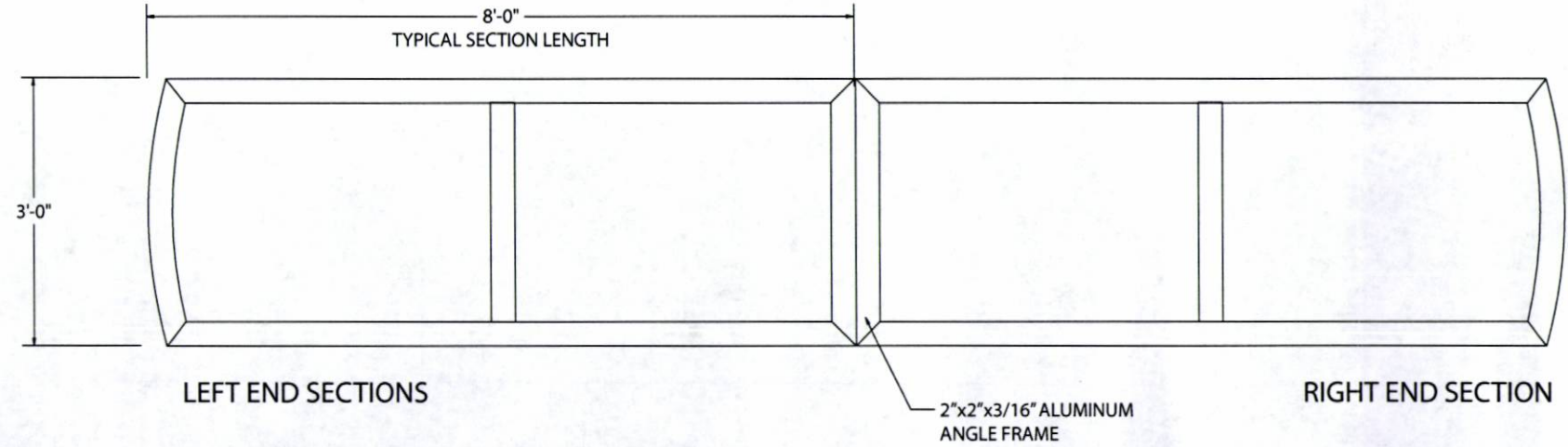
THOMAS
SIGN & AWNING COMPANY, INC.
4590 118TH AVENUE NORTH • CLEARWATER, FL • 33762
800-526-3325 • 727-573-7757 • FAX 727-573-0328



FW-30 NI WALL SIGN FRAMING DETAIL
SCALE: 3/4" = 1'-0"

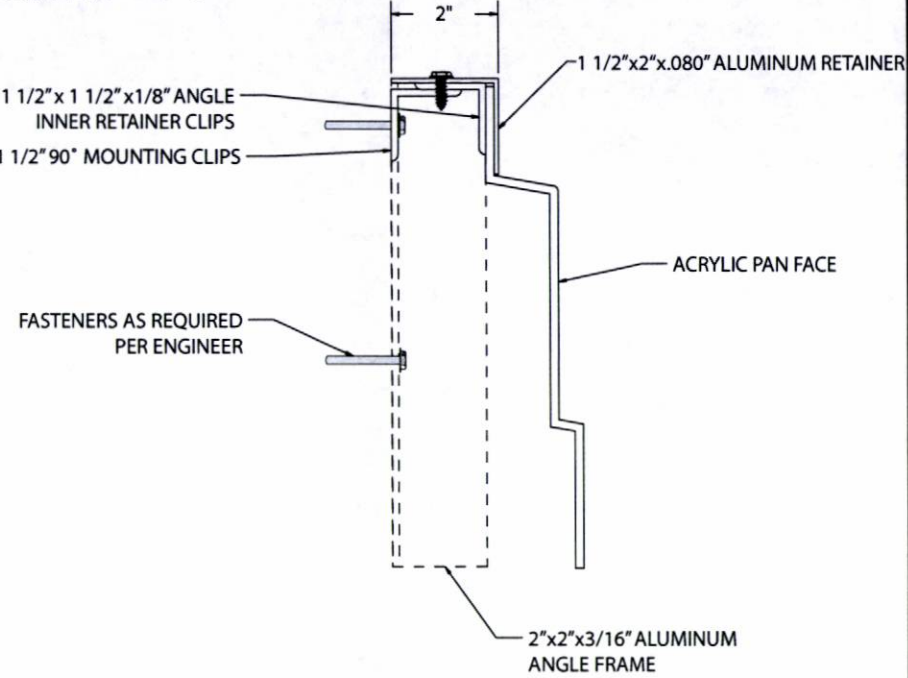


MIDDLE SECTIONS

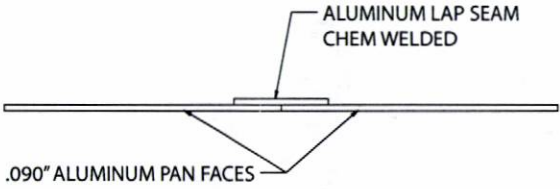


F-36 NI FASCIA BANDING FRAMING DETAIL
SCALE: 1/2" = 1'-0"

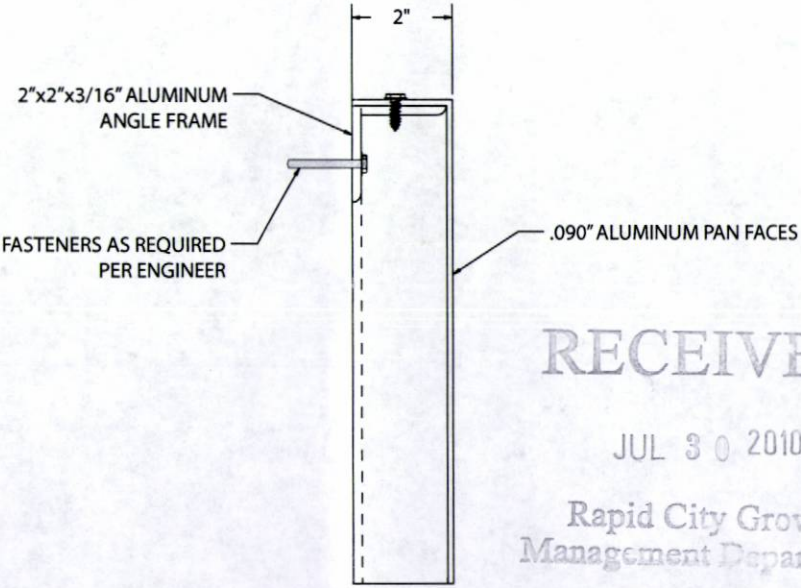
NI WALL SIGN DETAILS
SCALE: 3" = 1'-0"



LAP SEAM DETAIL
SCALE: 3" = 1'-0"



NI FASCIA BANDING DETAILS
SCALE: 3" = 1'-0"



RECEIVED
JUL 30 2010
Rapid City Growth
Management Department

THIS DRAWING IS THE PROPERTY OF THOMAS SIGN & AWNING CO., INC. ALL RIGHTS TO ITS USE FOR REPRODUCTION ARE RESERVED BY THOMAS SIGN & AWNING CO., INC., CLEARWATER, FL.

DATE	09.17.08	SHEET	2	OF	2
INSTALLATION ADDRESS	CITY	STATE	REVISION 1	REVISION 2	REVISION 3
CLIENT	NEW HOLLAND	DESIGN NUMBER	A-FW-30 & F-36 PROD WS FB ENG	REVISION: X	REVISION: X
SALES REP	PT	ARTIST	SLD	DATE	DATE
APPROVED	APPROVED AS NOTED	REVIS & RESUBMIT			

THOMAS

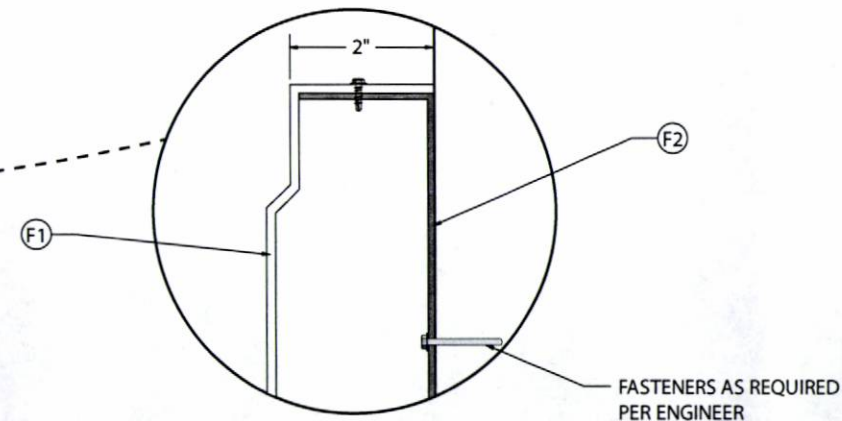
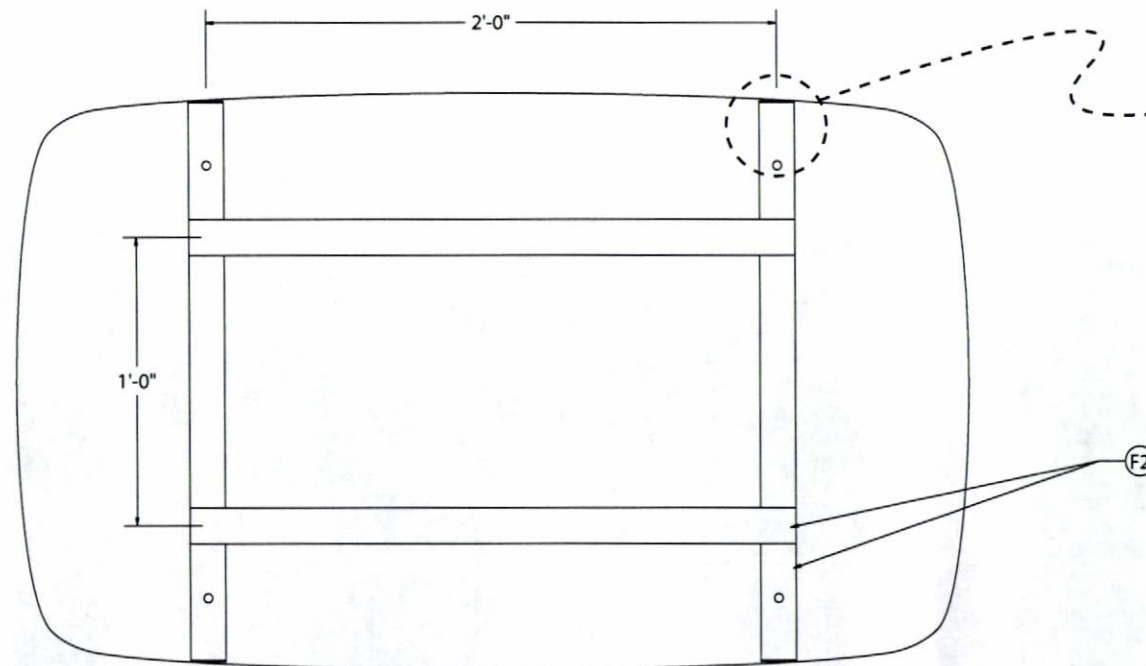
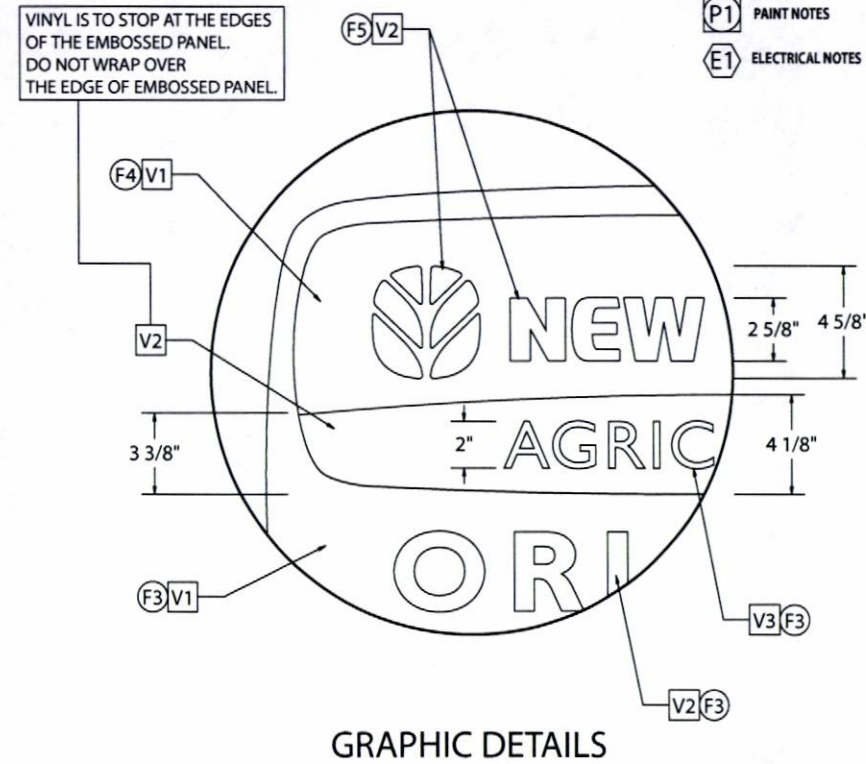
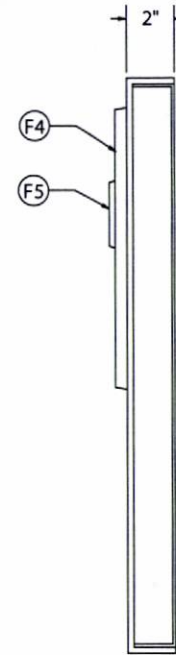
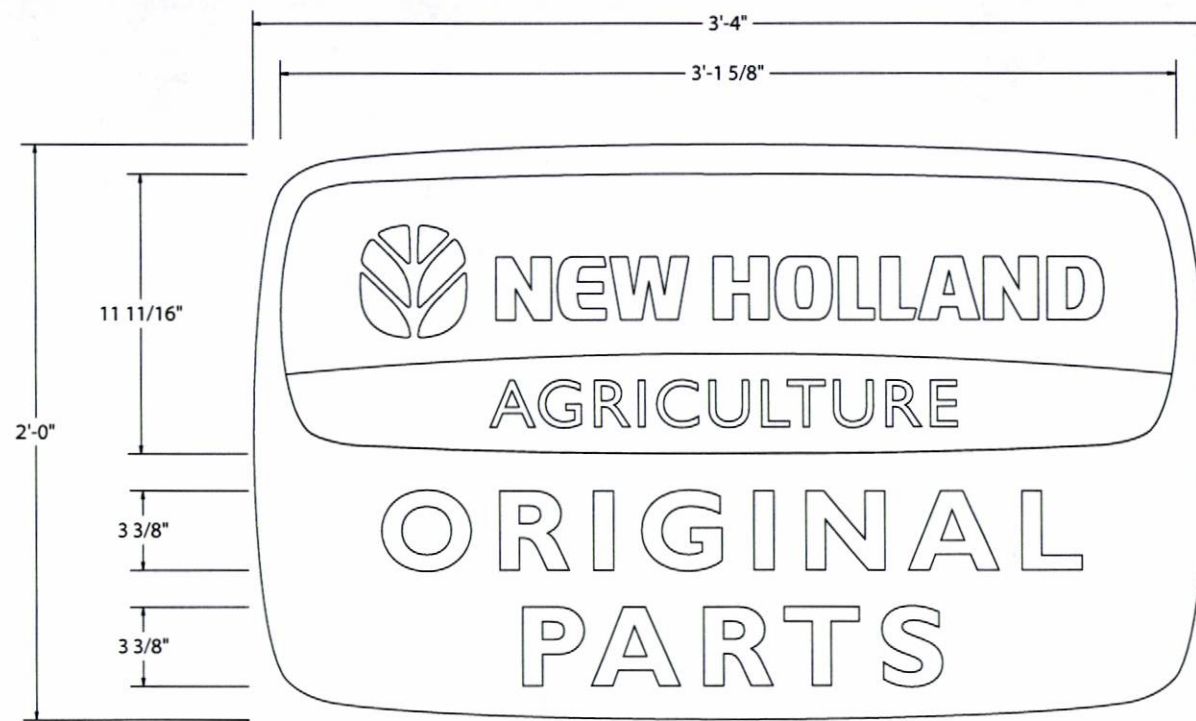
SIGN & AWNING COMPANY, INC.

4590 118TH AVENUE NORTH • CLEARWATER, FL • 33762

800-526-3325 • 727-573-7757 • FAX 727-573-0328

RECEIVED
JUL 30 2010
Rapid City Growth
Management Department

10PD051

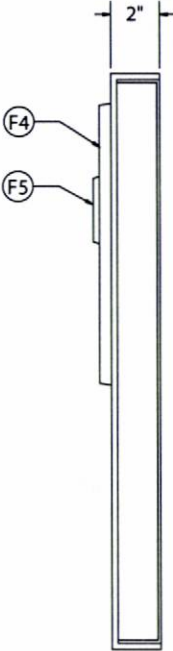
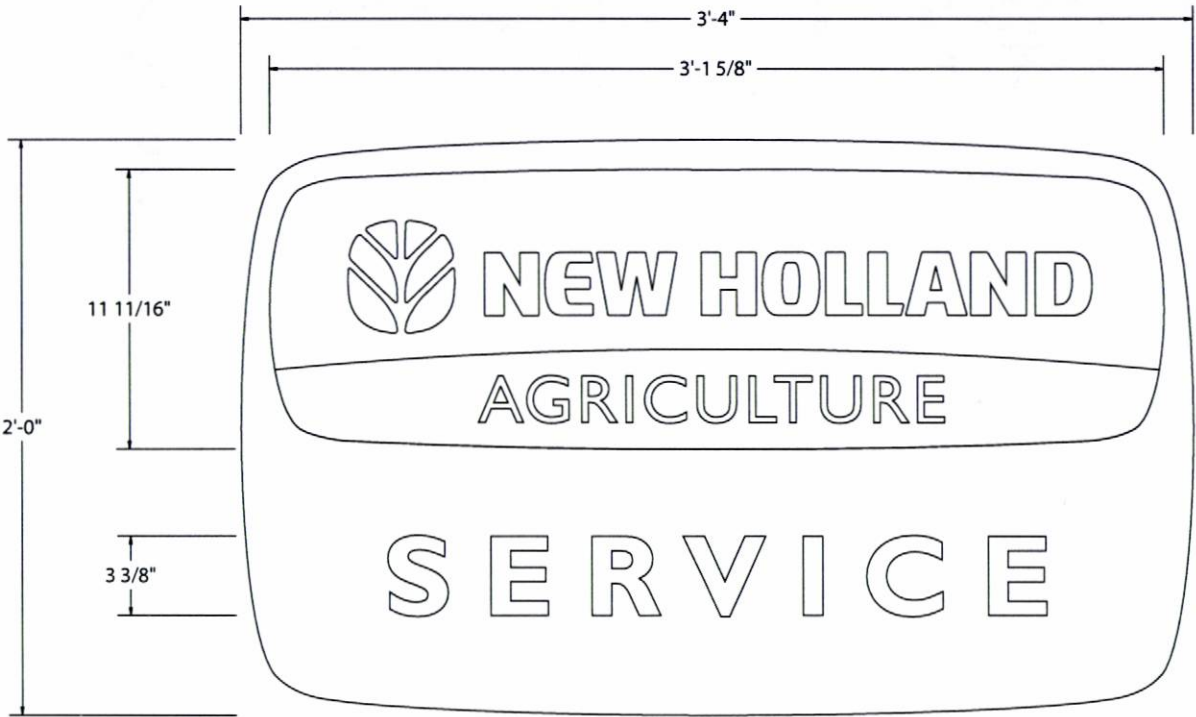


FINAL SIZING FOR ALL STRUCTURAL MEMBERS
(i.e. COLUMNS, MATCH PLATES, CONNECTION BOLTS,
ANCHOR BOLTS, FOUNDATIONS AND REINFORCE-
MENT) TO BE SIZED BY A LICENSED ENGINEER TO
MEET OR EXCEED ALL APPLICABLE LOCAL, STATE, AND
FEDERAL CODES, AND WIND LOAD REQUIREMENTS
SPECIFIC TO THEIR LOCATION.

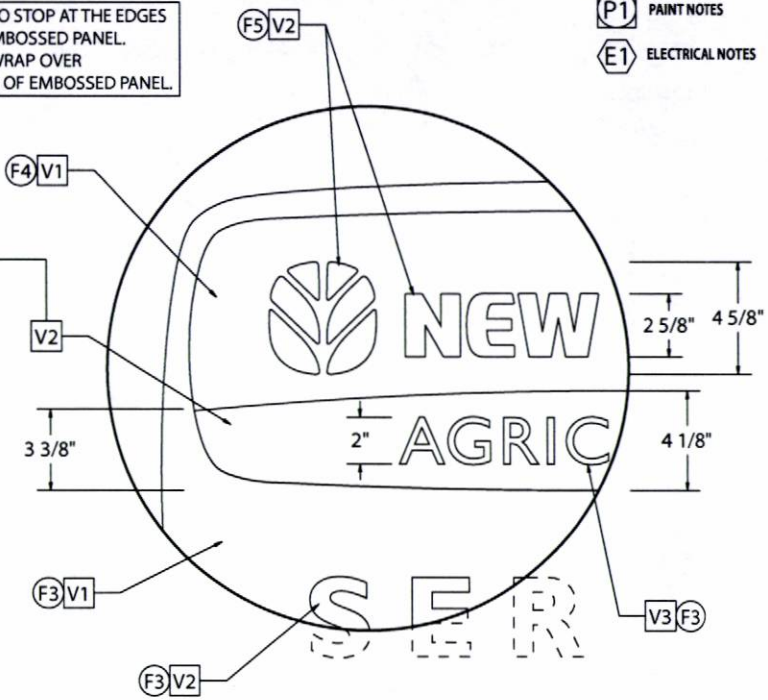
IW-24 S/F NON-ILLUMINATED WALL SIGN
SCALE: 1 1/2" = 1'-0"

TOTAL SQFT=6.66'		THIS DRAWING IS THE PROPERTY OF THOMAS SIGN & AWNING CO., INC. ALL RIGHTS TO ITS USE FOR REPRODUCTION ARE RESERVED BY THOMAS SIGN & AWNING CO., INC., CLEARWATER, FL		DATE		05.18.08	
PART # CNHIW-24AP				SHEET		OF	
ESTIMATE # 58886				1		1	
FONTS USED				ARTIST		RLR	
1) GILL SANS BOLD 2) X		SALES		PT		DATE	
FABRICATION NOTES		STATE		X		DATE	
1) .125" ACRYLIC DR WHITE #7328 - PANFORMED & EMBOSSED 2) 1 1/2" x 1/8" ALUMINUM FLAT BAR 3) FLAT COPY (or) BACKGROUND 4) 1/2" EMBOSSED BACKGROUND 5) 1/4" EMBOSSED LOGO & COPY 6) X		REVISION 3: X		DATE		DATE	
VINYL COLOR		REVISION 4: X		DATE		DATE	
1) ARLON YELLOW #2500-3393 2) ARLON BLUE #2500-2533 3) REVERSE WEEDED TO SHOW WHITE 4) X 5) X 6) X		REVISION 3: X		DATE		DATE	
VINYL COLOR		REVISION 4: X		DATE		DATE	
1) ARLON YELLOW #2500-3393 2) ARLON BLUE #2500-2533 3) REVERSE WEEDED TO SHOW WHITE 4) X 5) X 6) X		REVISION 3: X		DATE		DATE	
VINYL COLOR		REVISION 4: X		DATE		DATE	
1) ARLON YELLOW #2500-3393 2) ARLON BLUE #2500-2533 3) REVERSE WEEDED TO SHOW WHITE 4) X 5) X 6) X		REVISION 3: X		DATE		DATE	
VINYL COLOR		REVISION 4: X		DATE		DATE	
1) ARLON YELLOW #2500-3393 2) ARLON BLUE #2500-2533 3) REVERSE WEEDED TO SHOW WHITE 4) X 5) X 6) X		REVISION 3: X		DATE		DATE	
VINYL COLOR		REVISION 4: X		DATE		DATE	
1) ARLON YELLOW #2500-3393 2) ARLON BLUE #2500-2533 3) REVERSE WEEDED TO SHOW WHITE 4) X 5) X 6) X		REVISION 3: X		DATE		DATE	
VINYL COLOR		REVISION 4: X		DATE		DATE	
1) ARLON YELLOW #2500-3393 2) ARLON BLUE #2500-2533 3) REVERSE WEEDED TO SHOW WHITE 4) X 5) X 6) X		REVISION 3: X		DATE		DATE	
VINYL COLOR		REVISION 4: X		DATE		DATE	
1) ARLON YELLOW #2500-3393 2) ARLON BLUE #2500-2533 3) REVERSE WEEDED TO SHOW WHITE 4) X 5) X 6) X		REVISION 3: X		DATE		DATE	
VINYL COLOR		REVISION 4: X		DATE		DATE	
1) ARLON YELLOW #2500-3393 2) ARLON BLUE #2500-2533 3) REVERSE WEEDED TO SHOW WHITE 4) X 5) X 6) X		REVISION 3: X		DATE		DATE	
VINYL COLOR		REVISION 4: X		DATE		DATE	
1) ARLON YELLOW #2500-3393 2) ARLON BLUE #2500-2533 3) REVERSE WEEDED TO SHOW WHITE 4) X 5) X 6) X		REVISION 3: X		DATE		DATE	
VINYL COLOR		REVISION 4: X		DATE		DATE	
1) ARLON YELLOW #2500-3393 2) ARLON BLUE #2500-2533 3) REVERSE WEEDED TO SHOW WHITE 4) X 5) X 6) X		REVISION 3: X		DATE		DATE	
VINYL COLOR		REVISION 4: X		DATE		DATE	
1) ARLON YELLOW #2500-3393 2) ARLON BLUE #2500-2533 3) REVERSE WEEDED TO SHOW WHITE 4) X 5) X 6) X		REVISION 3: X		DATE		DATE	
VINYL COLOR		REVISION 4: X		DATE		DATE	
1) ARLON YELLOW #2500-3393 2) ARLON BLUE #2500-2533 3) REVERSE WEEDED TO SHOW WHITE 4) X 5) X 6) X		REVISION 3: X		DATE		DATE	
VINYL COLOR		REVISION 4: X		DATE		DATE	
1) ARLON YELLOW #2500-3393 2) ARLON BLUE #2500-2533 3) REVERSE WEEDED TO SHOW WHITE 4) X 5) X 6) X		REVISION 3: X		DATE		DATE	
VINYL COLOR		REVISION 4: X		DATE		DATE	
1) ARLON YELLOW #2500-3393 2) ARLON BLUE #2500-2533 3) REVERSE WEEDED TO SHOW WHITE 4) X 5) X 6) X		REVISION 3: X		DATE		DATE	
VINYL COLOR		REVISION 4: X		DATE		DATE	
1) ARLON YELLOW #2500-3393 2) ARLON BLUE #2500-2533 3) REVERSE WEEDED TO SHOW WHITE 4) X 5) X 6) X		REVISION 3: X		DATE		DATE	
VINYL COLOR		REVISION 4: X		DATE		DATE	
1) ARLON YELLOW #2500-3393 2) ARLON BLUE #2500-2533 3) REVERSE WEEDED TO SHOW WHITE 4) X 5) X 6) X		REVISION 3: X		DATE		DATE	
VINYL COLOR		REVISION 4: X		DATE		DATE	
1) ARLON YELLOW #2500-3393 2) ARLON BLUE #2500-2533 3) REVERSE WEEDED TO SHOW WHITE 4) X 5) X 6) X		REVISION 3: X		DATE		DATE	
VINYL COLOR		REVISION 4: X		DATE		DATE	
1) ARLON YELLOW #2500-3393 2) ARLON BLUE #2500-2533 3) REVERSE WEEDED TO SHOW WHITE 4) X 5) X 6) X		REVISION 3: X		DATE		DATE	
VINYL COLOR		REVISION 4: X		DATE		DATE	
1) ARLON YELLOW #2500-3393 2) ARLON BLUE #2500-2533 3) REVERSE WEEDED TO SHOW WHITE 4) X 5) X 6) X		REVISION 3: X		DATE		DATE	
VINYL COLOR		REVISION 4: X		DATE		DATE	
1) ARLON YELLOW #2500-3393 2) ARLON BLUE #2500-2533 3) REVERSE WEEDED TO SHOW WHITE 4) X 5) X 6) X		REVISION 3: X		DATE		DATE	
VINYL COLOR		REVISION 4: X		DATE		DATE	
1) ARLON YELLOW #2500-3393 2) ARLON BLUE #2500-2533 3) REVERSE WEEDED TO SHOW WHITE 4) X 5) X 6) X		REVISION 3: X		DATE		DATE	
VINYL COLOR		REVISION 4: X		DATE		DATE	
1) ARLON YELLOW #2500-3393 2) ARLON BLUE #2500-2533 3) REVERSE WEEDED TO SHOW WHITE 4) X 5) X 6) X		REVISION 3: X		DATE		DATE	
VINYL COLOR		REVISION 4: X		DATE		DATE	
1) ARLON YELLOW #2500-3393 2) ARLON BLUE #2500-2533 3) REVERSE WEEDED TO SHOW WHITE 4) X 5) X 6) X		REVISION 3: X		DATE		DATE	
VINYL COLOR		REVISION 4: X		DATE		DATE	
1) ARLON YELLOW #2500-3393 2) ARLON BLUE #2500-2533 3) REVERSE WEEDED TO SHOW WHITE 4) X 5) X 6) X		REVISION 3: X		DATE		DATE	
VINYL COLOR		REVISION 4: X		DATE		DATE	
1) ARLON YELLOW #2500-3393 2) ARLON BLUE #2500-2533 3) REVERSE WEEDED TO SHOW WHITE 4) X 5) X 6) X		REVISION 3: X		DATE		DATE	
VINYL COLOR		REVISION 4: X		DATE		DATE	
1) ARLON YELLOW #2500-3393 2) ARLON BLUE #2500-2533 3) REVERSE WEEDED TO SHOW WHITE 4) X 5) X 6) X		REVISION 3: X		DATE		DATE	
VINYL COLOR		REVISION 4: X		DATE		DATE	
1) ARLON YELLOW #2500-3393 2) ARLON BLUE #2500-2533 3) REVERSE WEEDED TO SHOW WHITE 4) X 5) X 6) X		REVISION 3: X		DATE		DATE	
VINYL COLOR		REVISION 4: X		DATE		DATE	
1) ARLON YELLOW #2500-3393 2) ARLON BLUE #2500-2533 3) REVERSE WEEDED TO SHOW WHITE 4) X 5) X 6) X		REVISION 3: X		DATE		DATE	
VINYL COLOR		REVISION 4: X		DATE		DATE	
1) ARLON YELLOW #2500-3393 2) ARLON BLUE #2500-2533 3) REVERSE WEEDED TO SHOW WHITE 4) X 5) X 6) X		REVISION 3: X		DATE		DATE	
VINYL COLOR		REVISION 4: X		DATE		DATE	
1) ARLON YELLOW #2500-3393 2) ARLON BLUE #2500-2533 3) REVERSE WEEDED TO SHOW WHITE 4) X 5) X 6) X		REVISION 3: X		DATE		DATE	
VINYL COLOR		REVISION 4: X		DATE		DATE	
1) ARLON YELLOW #2500-3393 2) ARLON BLUE #2500-2533 3) REVERSE WEEDED TO SHOW WHITE 4) X 5) X 6) X		REVISION 3: X		DATE		DATE	
VINYL COLOR		REVISION 4: X		DATE		DATE	
1) ARLON YELLOW #2500-3393 2) ARLON BLUE #2500-2533 3) REVERSE WEEDED TO SHOW WHITE 4) X 5) X 6) X		REVISION 3: X		DATE		DATE	
VINYL COLOR		REVISION 4: X		DATE		DATE	
1) ARLON YELLOW #2500-3393 2) ARLON BLUE #2500-2533 3) REVERSE WEEDED TO SHOW WHITE 4) X 5) X 6) X		REVISION 3: X		DATE		DATE	
VINYL COLOR		REVISION 4: X		DATE		DATE	
1) ARLON YELLOW #2500-3393 2) ARLON BLUE #2500-2533 3) REVERSE WEEDED TO SHOW WHITE 4) X 5) X 6) X		REVISION 3: X		DATE		DATE	
VINYL COLOR		REVISION 4: X		DATE		DATE	
1) ARLON YELLOW #2500-3393 2) ARLON BLUE #2500-2533 3) REVERSE WEEDED TO SHOW WHITE 4) X 5) X 6) X		REVISION 3: X		DATE		DATE	
VINYL COLOR		REVISION 4: X		DATE		DATE	
1) ARLON YELLOW #2500-3393 2) ARLON BLUE #2500-2533 3) REVERSE WEEDED TO SHOW WHITE 4) X 5) X 6) X		REVISION 3: X		DATE		DATE	
VINYL COLOR		REVISION 4: X		DATE		DATE	
1) ARLON YELLOW #2500-3393 2) ARLON BLUE #2500-2533 3) REVERSE WEEDED TO SHOW WHITE 4) X 5) X 6) X		REVISION 3: X		DATE		DATE	
VINYL COLOR		REVISION 4: X		DATE		DATE	
1) ARLON YELLOW #2500-3393 2) ARLON BLUE #2500-2533 3) REVERSE WEEDED TO SHOW WHITE 4) X 5) X 6) X		REVISION 3: X		DATE		DATE	
VINYL COLOR		REVISION 4: X		DATE		DATE	
1) ARLON YELLOW #2500-3393 2) ARLON BLUE #2500-2533 3) REVERSE WEEDED TO SHOW WHITE 4) X 5) X 6) X		REVISION 3: X		DATE		DATE	
VINYL COLOR		REVISION 4: X		DATE		DATE	
1) ARLON YELLOW #2500-3393 2) ARLON BLUE #2500-2533 3) REVERSE WEEDED TO SHOW WHITE 4) X 5) X 6) X		REVISION 3: X		DATE		DATE	
VINYL COLOR		REVISION 4: X		DATE		DATE	
1) ARLON YELLOW #2500-3393 2) ARLON BLUE #2500-2533 3) REVERSE WEEDED TO SHOW WHITE 4) X 5) X 6) X		REVISION 3: X		DATE		DATE	
VINYL COLOR		REVISION 4: X		DATE		DATE	
1) ARLON YELLOW #2500-3393 2) ARLON BLUE #2500-2533 3) REVERSE WEEDED TO SHOW WHITE 4) X 5) X 6) X		REVISION 3: X		DATE		DATE	
VINYL COLOR		REVISION 4: X		DATE		DATE	
1) ARLON YELLOW #2500-3393 2) ARLON BLUE #2500-2533 3) REVERSE WEEDED TO SHOW WHITE 4) X 5) X 6) X		REVISION 3: X		DATE		DATE	
VINYL COLOR		REVISION 4: X		DATE		DATE	
1) ARLON YELLOW #2500-3393 2) ARLON BLUE #2500-2533 3) REVERSE WEEDED TO SHOW WHITE 4) X 5) X 6) X		REVISION 3: X		DATE		DATE	
VINYL COLOR		REVISION 4: X		DATE		DATE	
1) ARLON YELLOW #2500-3393 2) ARLON BLUE #2500-2533 3) REVERSE WEEDED TO SHOW WHITE 4) X 5) X 6) X		REVISION 3: X		DATE		DATE	
VINYL COLOR		REVISION 4: X		DATE		DATE	
1) ARLON YELLOW #2500-3393 2) ARLON BLUE #2500-2533 3) REVERSE WEEDED TO SHOW WHITE 4) X 5) X 6) X		REVISION 3: X		DATE		DATE	
VINYL COLOR		REVISION 4: X		DATE		DATE	
1) ARLON YELLOW #2500-3393 2) ARLON BLUE #2500-2533 3) REVERSE WEEDED TO SHOW WHITE 4) X 5) X 6) X		REVISION 3: X		DATE		DATE	
VINYL COLOR		REVISION 4: X		DATE		DATE	
1) ARLON YELLOW #2500-3393 2) ARLON BLUE #2500-2533 3) REVERSE WEEDED TO SHOW WHITE 4) X 5) X 6) X		REVISION 3: X		DATE		DATE	
VINYL COLOR		REVISION 4: X		DATE		DATE	
1) ARLON YELLOW #2500-3393 2) ARLON BLUE #2500-2533 3) REVERSE WEEDED TO SHOW WHITE 4) X 5) X 6) X		REVISION 3: X		DATE		DATE	
VINYL COLOR		REVISION 4: X		DATE		DATE	
1) ARLON YELLOW #2500-3393 2) ARLON BLUE #2500-2533 3) REVERSE WEEDED TO SHOW WHITE 4) X 5) X 6) X		REVISION 3: X		DATE		DATE	
VINYL COLOR		REVISION 4: X		DATE		DATE	
1) ARLON YELLOW #2500-3393 2) ARLON BLUE #2500-2533 3) REVERSE WEEDED TO SHOW WHITE 4) X 5) X 6) X		REVISION 3: X		DATE		DATE	
VINYL COLOR		REVISION 4: X		DATE		DATE	
1) ARLON YELLOW #2500-3393 2) ARLON BLUE #2500-2533 3) REVERSE WEEDED TO SHOW WHITE 4) X 5) X 6) X		REVISION 3: X		DATE		DATE	
VINYL COLOR		REVISION 4: X		DATE		DATE	
1) ARLON YELLOW #2500-3393 2) ARLON BLUE #2500-2533 3) REVERSE WEEDED TO SHOW WHITE 4) X 5) X 6) X		REVISION 3: X		DATE		DATE	
VINYL COLOR		REVISION 4: X		DATE		DATE	
1) ARLON YELLOW #2500-3393 2) ARLON BLUE #2500-2533 3) REVERSE WEEDED TO SHOW WHITE 4) X 5) X 6) X		REVISION 3: X		DATE		DATE	
VINYL COLOR		REVISION 4: X		DATE		DATE	
1) ARLON YELLOW #2500-3393 2) ARLON BLUE #2500-2533 3) REVERSE WEEDED TO SHOW WHITE 4) X 5) X 6) X		REVISION 3: X		DATE		DATE	
VINYL COLOR		REVISION 4: X		DATE		DATE	
1) ARLON YELLOW #2500-3393 2) ARLON BLUE #2500-2533 3) REVERSE WEEDED TO SHOW WHITE 4) X 5) X 6) X		REVISION 3: X		DATE		DATE	
VINYL COLOR		REVISION 4: X		DATE		DATE	
1) ARLON YELLOW #2500-3393 2) A							

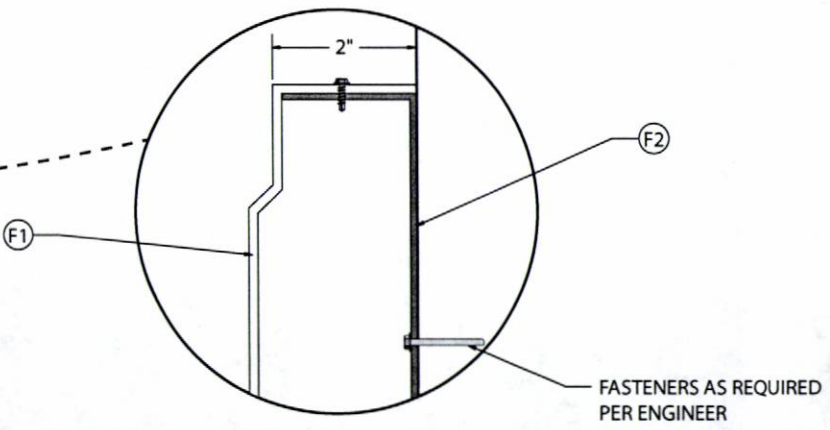
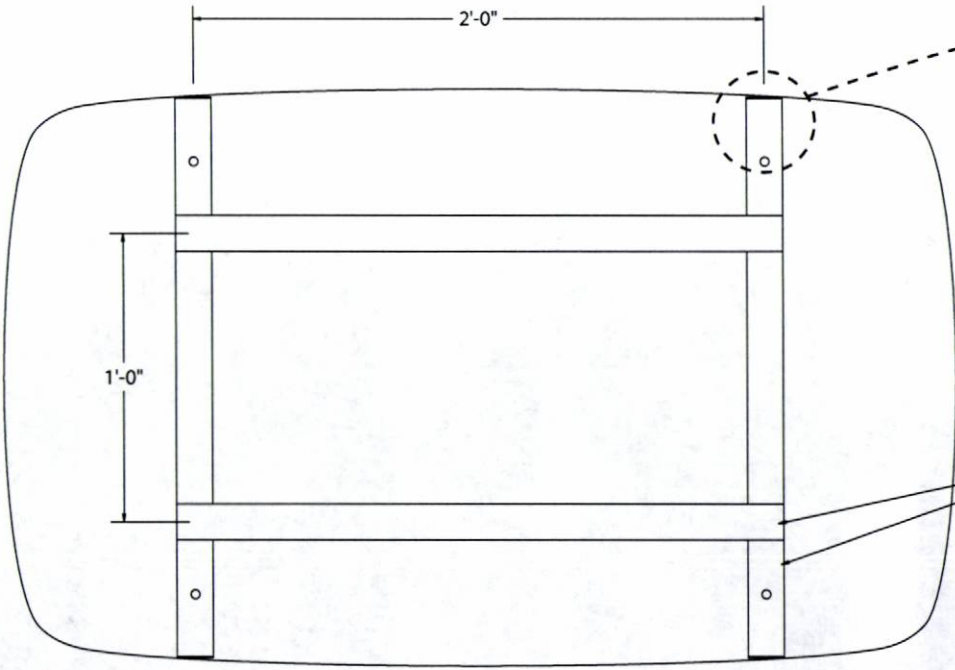
NEW HOLLAND DEALER INSTALL SIGNAGE
VARIOUS 10PD051



VINYL IS TO STOP AT THE EDGES
OF THE EMBOSSED PANEL.
DO NOT WRAP OVER
THE EDGE OF EMBOSSED PANEL.



GRAPHIC DETAILS



- F1 FABRICATION NOTES
- V1 VINYL COLORS
- P1 PAINT NOTES
- E1 ELECTRICAL NOTES

TOTAL SQFT=6.66'
PART # CNHIW-24AS
ESTIMATE # 58887
DATE 05.18.08
SHEET 1 OF 1
1) GILL SANS BOLD
2) X
FONTS USED
FABRICATION NOTES
1) .125" ACRYLIC DR WHITE #7328 - PANFORMED & EMBOSSED
2) 1 1/2" x 1/8" ALUMINUM FLAT BAR
3) FLAT COPY (or) BACKGROUND
4) 1/2" EMBOSSED BACKGROUND
5) 1/4" EMBOSSED LOGO & COPY
6) X
VINYL COLOR
1) ARLON YELLOW #2500-3393
2) ARLON BLUE #2500-2533
3) REVERSE WEEDED TO SHOW WHITE
4) X
5) X
6) X

INSTALLATION	X
ADDRESS	X
CITY	X
STATE	X
SALES REP	X
PT	X
APPROVED	X
APPROVED AS NOTED	X
REVISION 1	X
REVISION 2	X
REVISION 3	X
REVISION 4	X
REVISION 5	X
REVISION 6	X

ENGINEER BOX

RECEIVED
JUL 30 2010
Rapid City Growth
Management Department

IW-24 S/F NON-ILLUMINATED WALL SIGN
SCALE: 1 1/2" = 1'-0"

FINAL SIZING FOR ALL STRUCTURAL MEMBERS
(i.e. COLUMNS, MATCH PLATES, CONNECTION BOLTS,
ANCHOR BOLTS, FOUNDATIONS AND REINFORCE-
MENT) TO BE SIZED BY A LICENSED ENGINEER TO
MEET OR EXCEED ALL APPLICABLE LOCAL, STATE, AND
FEDERAL CODES, AND WIND LOAD REQUIREMENTS
SPECIFIC TO THEIR LOCATION.

THIS DRAWING IS THE PROPERTY OF THOMAS SIGN & AWNING CO., INC. ALL RIGHTS TO ITS USE FOR REPRODUCTION ARE RESERVED BY THOMAS SIGN & AWNING CO., INC., CLEARWATER, FL.

CLIENT: NEW HOLLAND
DESIGN NUMBER: A-IW-24-S PROD NIWS
REVISION: chg from 177 acrylic 7-29-08 jpm

REVISION: X

THOMAS
SIGN & AWNING COMPANY, INC.
4590 118TH AVENUE NORTH • CLEARWATER, FL • 33762
800-526-3325 • 727-573-7757 • FAX 727-573-0328