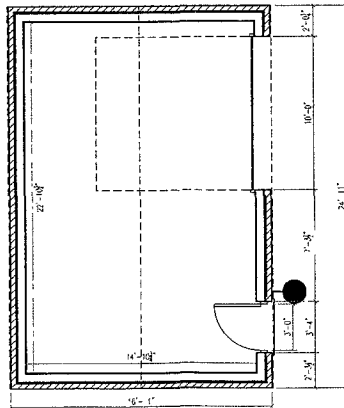
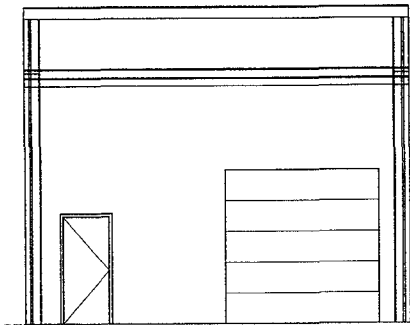
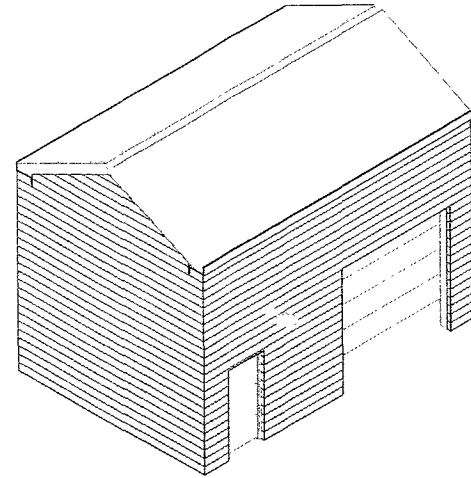
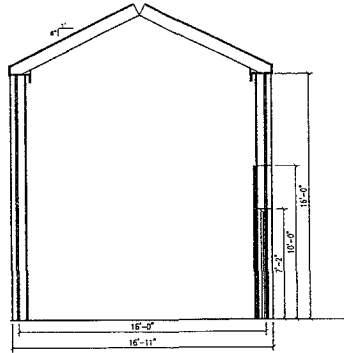
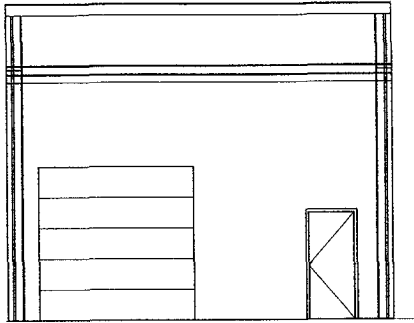


10UR020



Notes:
 General Building Dimensions 16'x24'
 Wall Height 16'
 Exterior Siding shall be Hardboard Siding
 Color to be determined
 Roofing materials shall be Asphalt Shingles

RECEIVED

JUL - 9 2010

Rapid City Growth
Management Department

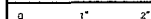
HDR

HDR Engineering, Inc.

PROJECT MANAGER

Saint Pat Odor Control

Elev



FILENAME: 1 Elev.dwg

SCALE: -

SHEET

1