

-THESE ARE THE SUGGESTED RANGE OF COLORS AND MATERIALS.

① RE-MODEL ELEVATION
 NTS



② EXISTING ELEVATIONS
 NTS

REVISIONS:

DATE: APRIL 23, 2010

PROJECT MANAGER: KELLI TREBIL

PROJECT NUMBER: 2007-026

**PRELIMINARY
 NOT FOR
 CONSTRUCTION**

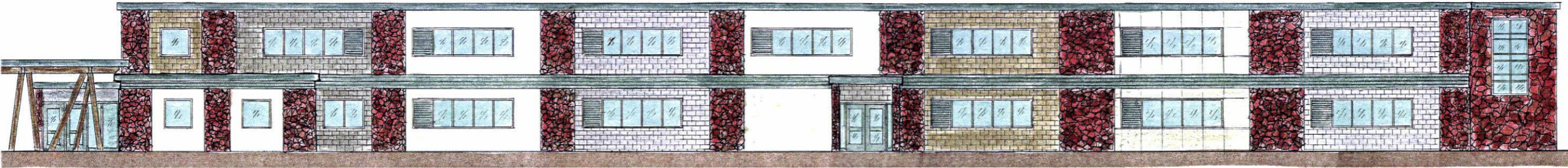
**TERRA SANCTA
 SPIRITUAL LIFE
 CENTER**
 RAPID CITY, SOUTH DAKOTA

ELEVATIONS

RECEIVED

APR 23 2010

Rapid City Growth
 Management Department



-THESE ARE THE SUGGESTED RANGE OF COLORS AND MATERIALS.

① **RE-MODEL ELEVATION**
NTS



② **EXISTING ELEVATIONS**
NTS

RECEIVED
APR 23 2010
Rapid City Growth
Management Department

REVISIONS:

DATE: APRIL 23, 2010

PROJECT MANAGER: KELLI TREBIL

PROJECT NUMBER: 2007-026

**PRELIMINARY
NOT FOR
CONSTRUCTION**

**TERRA SANCTA
ELEMENTARY**

RAPID CITY, SOUTH DAKOTA

ELEVATIONS