

JUN 23 2010

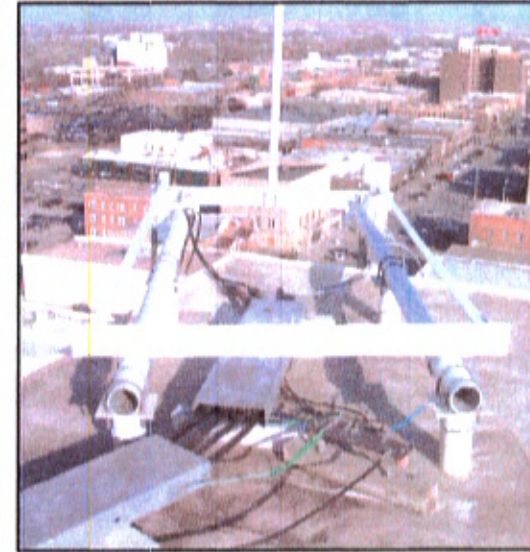
Rapid City Growth
Management Department



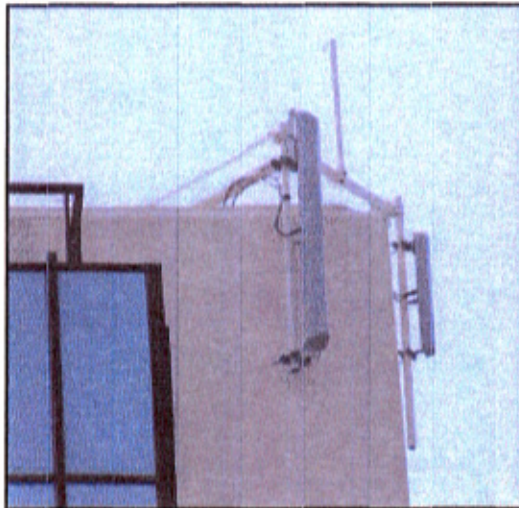
4 OVERALL TOWER PHOTO
SCALE: NONE



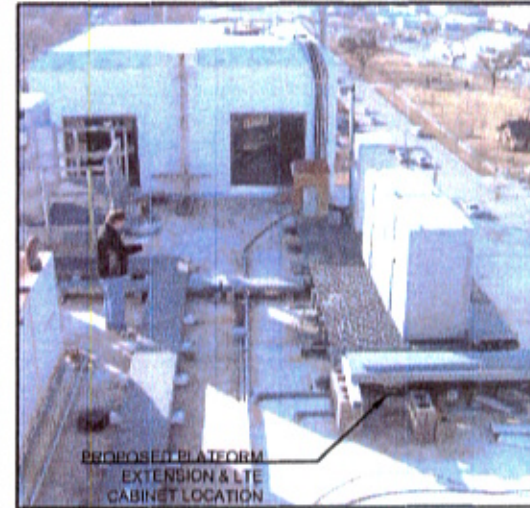
3 CABINET AND PLATFORM
SCALE: NONE



2 ANTENNA MOUNT PHOTO
SCALE: NONE



5 ANTENNA MOUNT PHOTO
SCALE: NONE



PROPOSED PLATFORM
EXTENSION & LTE
CABINET LOCATION

1 CABINET AND PLATFORM PHOTO
SCALE: NONE

I hereby certify that the portion of this technical submission captioned herein was prepared by me or under my direct supervision and represents original work. I am a duly registered Architect under the laws of the State of South Dakota. EXHIBIT 1 - LICENSE REG. NO. 1166

Signed: _____
Date: _____

DESIGN

ROBERT J DAVIS, RIA
ARCHITECT
807 S VALLEY VIEW RD
SIOUX FALLS, SD 57104
(605) 336-5151

VERIZON WIRELESS

1901 BRUSH LAKE ROAD
BROOKINGS, SD 57006
(605) 696-4747

PROJECT
2010432224

RCYC
DT RAPID CITY
LTE

1009 ST. JOSEPH STREET
RAPID CITY, SD 57701

SHEET CONTENTS:
MSG PHOTOS & DETAILS

DRAWN BY	TAB
DATE	3-31-10
CHECKED BY	TAB
REV. A	4-16-10
REV. B	5-7-10