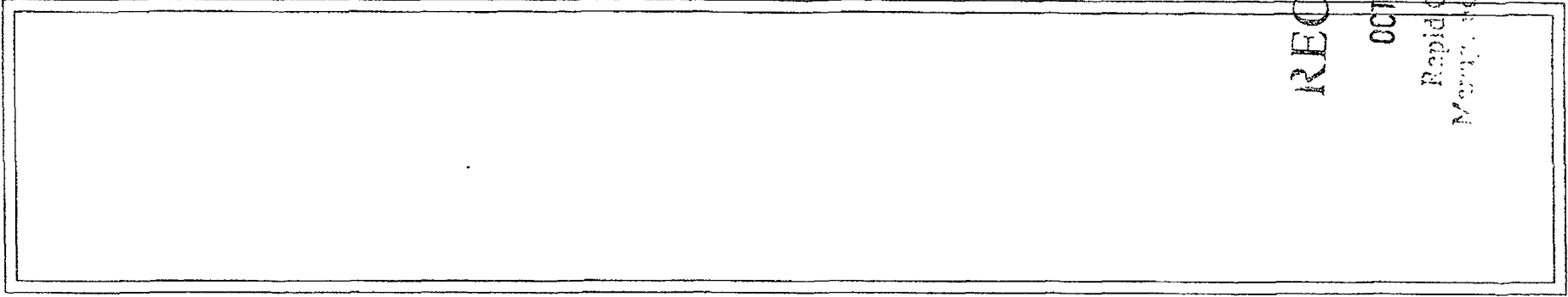


10UR016

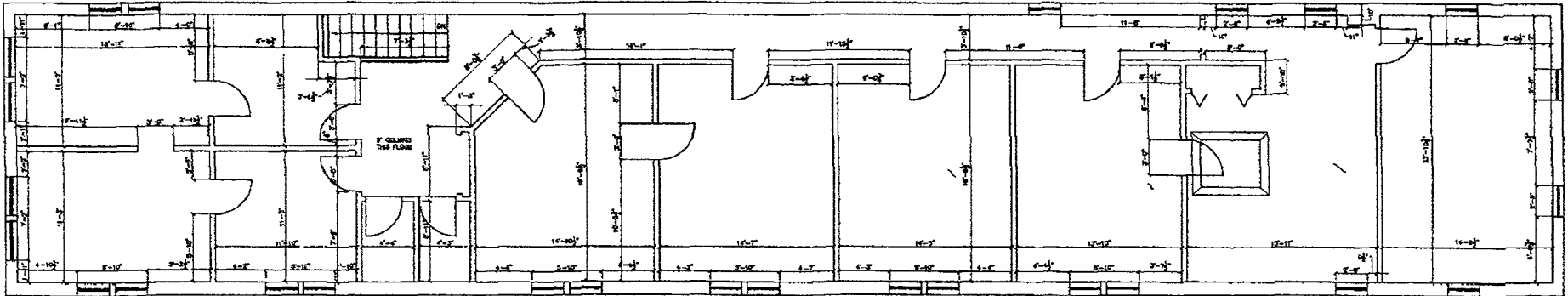


RECEIVED

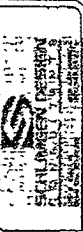
OCT - 2000

Rapid City Growth
Management Department

ROOF PLAN
2000.10.15.00



SECOND FLOOR PLAN
2000.10.15.00



PROJECT TITLE
WELKER BUILDING
ST JOSEPH ST
RAPID CITY, SOUTH DAKOTA

SHEET TITLE
SECOND FLOOR AND ROOF PLAN

DATE 1/24/99
DN BY GH
CK BY RB

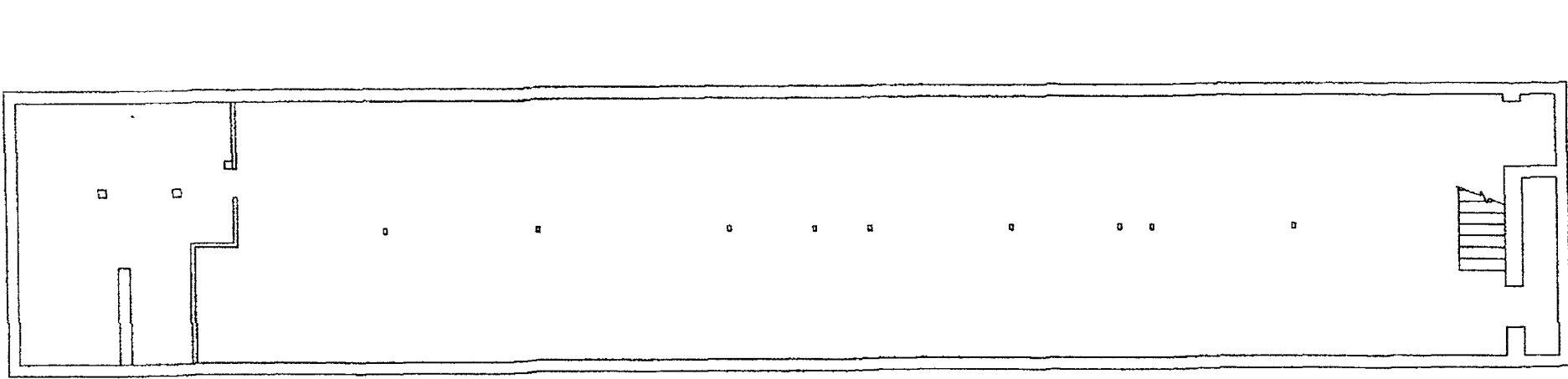
REVS: -

PROJECT NUMBER
0900

SCALE:
NPS

SHEET
A1.2

10UR016



BASEMENT PLAN

| | |
|------------------------------|----------|
| SHEET TITLE | |
| BASEMENT AND MAIN FLOOR PLAN | |
| DATE | 1/28/98 |
| DR BY | GH |
| CK BY | RS |
| REVS | - |
| PROJECT NUMBER | 0004 |
| SCALE | AS SHOWN |
| SHEET | |
| A1.1 | |

RECEIVED

OCT - 6 2009

Rapid City Growth
Management Department