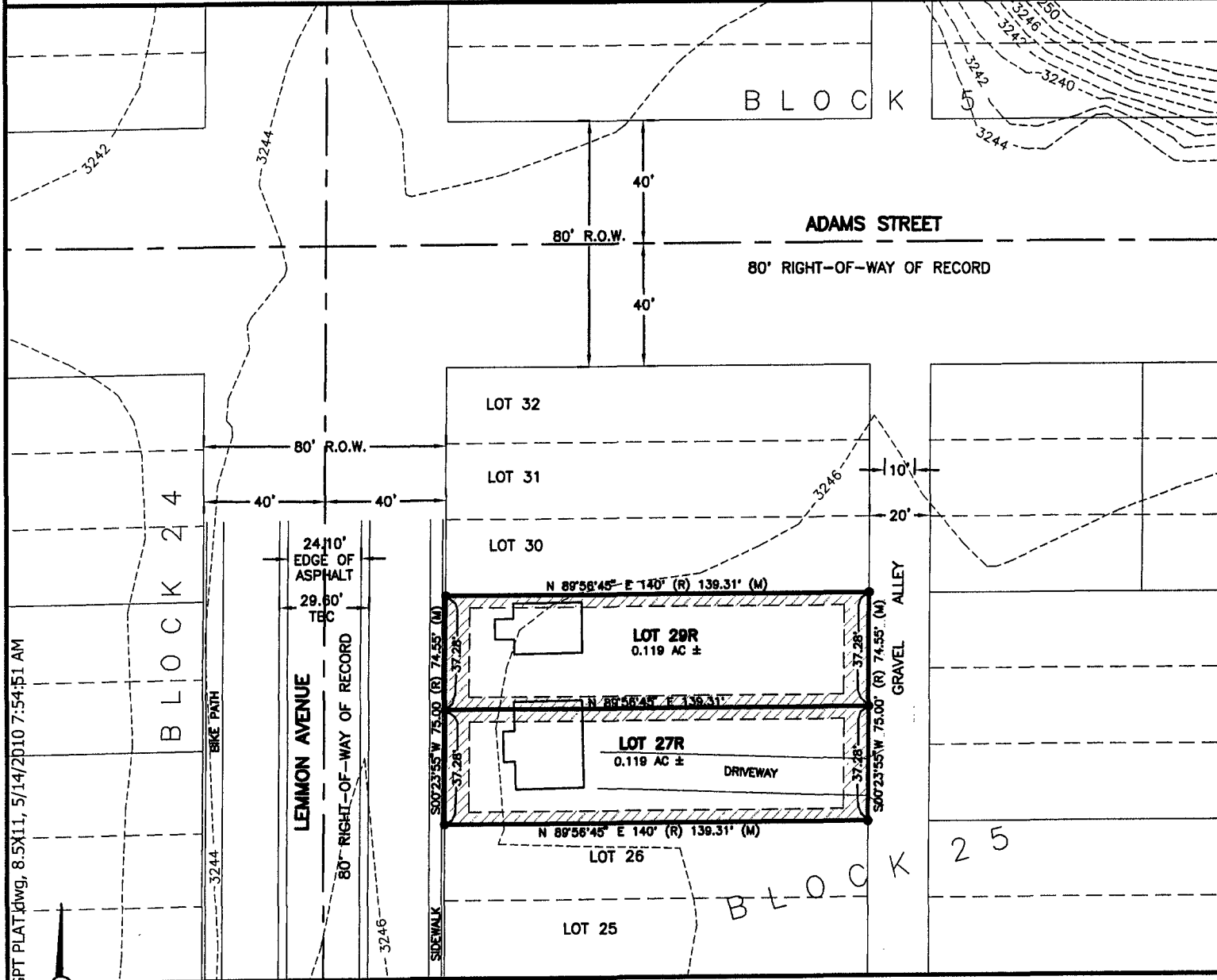


FEUXE€€

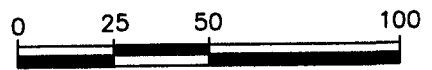
PLAT OF LOTS 27R AND 29R OF BLOCK 25 OF THE NORTH-RAPID ADDITION TO RAPID CITY

(FORMERLY LOTS 27, 28, AND 29 OF BLOCK 25 OF THE NORTH-RAPID ADDITION TO RAPID CITY)
LOCATED IN THE E 1/2 OF THE SE 1/4 OF THE NE 1/4 OF
SECTION 36, T2N, R7E, B.H.M.,
RAPID CITY, PENNINGTON COUNTY, SOUTH DAKOTA



NOTE: TOPOGRAPHY IS
SCALED FROM
USGS TOPOGRAPHY

MAY 14, 2010



SCALE: 1" = 40'

C:\Projects\3203 LEMMON AVE\3203 EGPT PLAT.dwg, 8.5X11, 5/14/2010 7:54:51 AM