

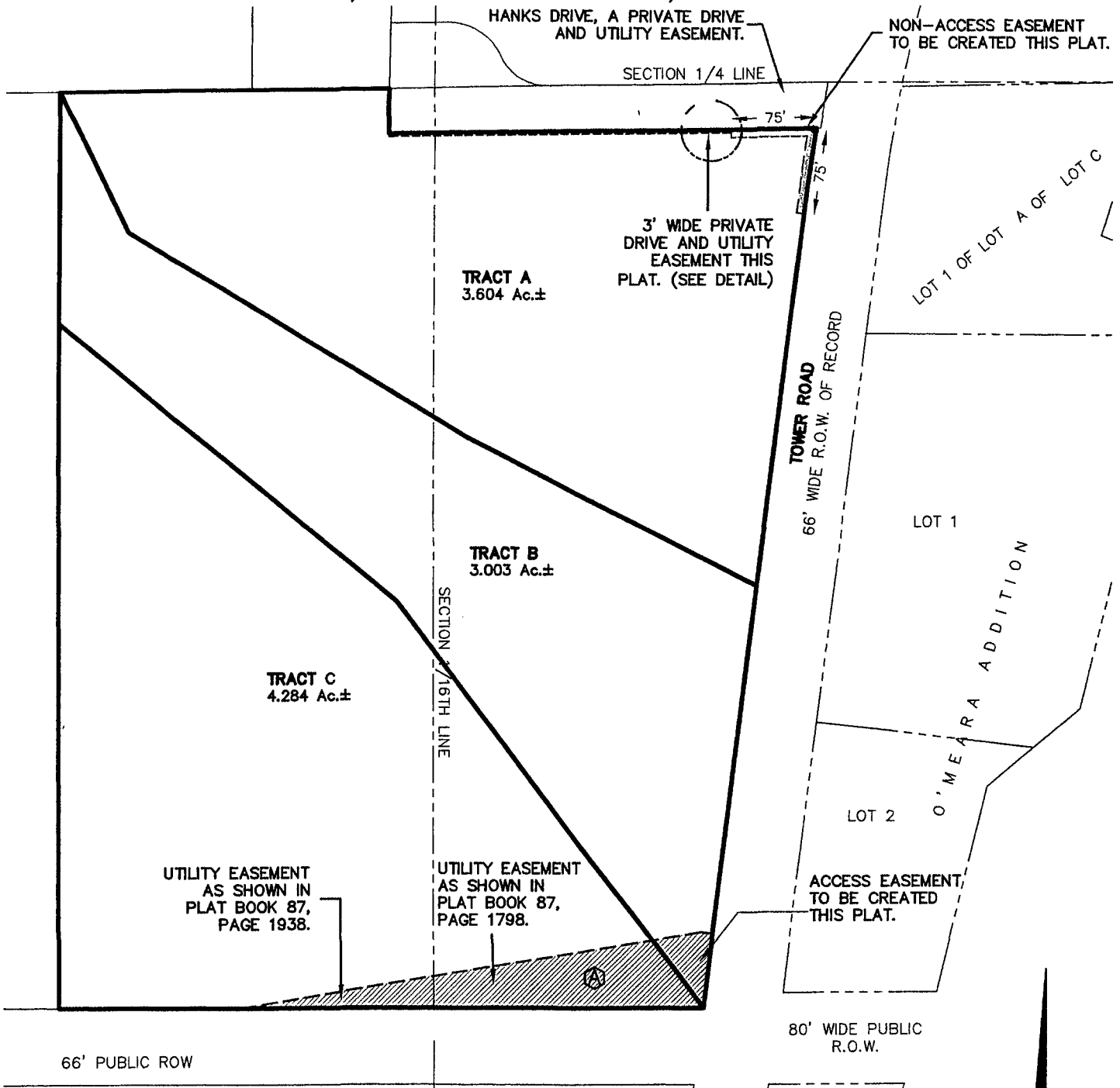
TRACTS A, B AND C, TOWER PLACE

(formerly a portion of the E1/2 of the E1/2 of the NW1/4 of the SW1/4 and a portion of the NE1/4 of the SW1/4 of Section 14)

LOCATED IN THE N1/2 OF THE SW1/4,

SECTION 14, T1N, R7E, BHM

RAPID CITY, PENNINGTON COUNTY, SOUTH DAKOTA



Ⓐ RIGHT-OF-WAY EASEMENT AS SHOWN IN MISC. BOOK 164, PAGE 1369. (ROUTE NOT SET FORTH)

Renner Associates, LLC.

616 Sixth St. * Rapid City, SD 57701 * 605/721-7310
FAX: 605/721-7313 * E-MAIL: Gary@RennerAssoc.com
* Spearfish 605/717-0016 *



N.T.S.