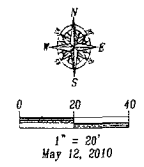
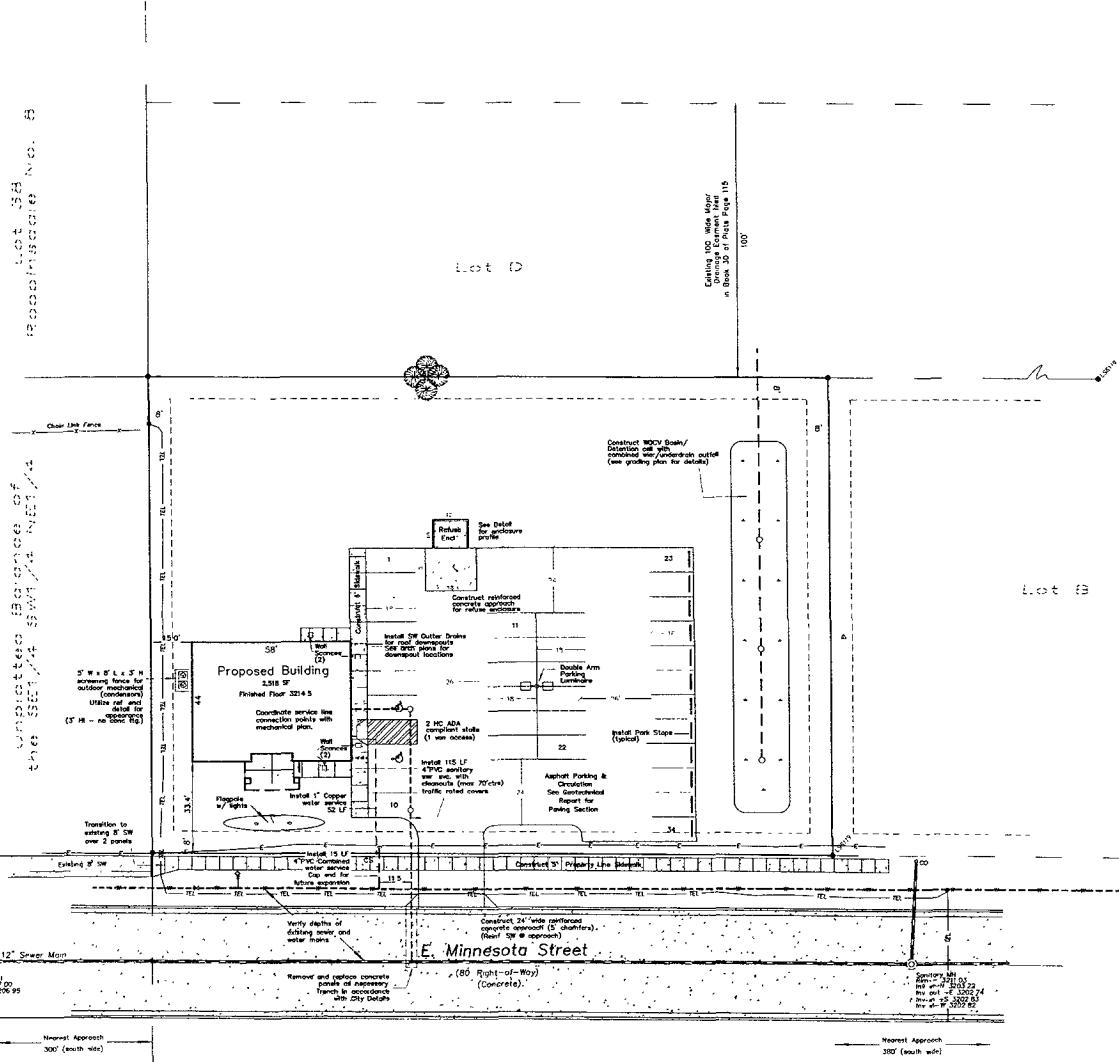


Lot 35B
P.O. Box 100
Rapid City, S.D. 57709

UNDISTURBED PORTION OF
CLEAR SECTION SW 1/4 NE 1/4



SURVEYOR'S NOTES

Utilities shown are from visual inspection, sketches provided by individual service providers and Utility Locates performed by South Dakota One Call, Ticket Number 092 790 155. The actual location of utilities and service lines may vary from the information shown hereon. We assume no liability for utilities and services that are not marked or are incorrectly defined by utility locators.

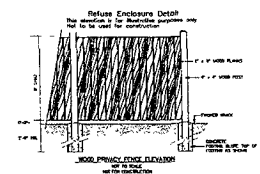
Bench Mark STA 1027 3252 31 (NGVD 29)

Bearings and Distances shown are measured this survey
See Plot Book 34 Page 95 for record information

Basis of Bearings North line of Lots A & B as plotted

LEGEND

- Sanitary Sewer Manhole (Unless noted)
- Sanitary Sewer Service Line Cleanout
- Fire Hydrant
- Water Valve
- Telecommunications Pedestal
- Chain Link Fence Line
- Underground Electric
- Underground Telephone
- Sanitary Sewer Line
- Water Main
- Found Survey Monument as noted
- Set Rebar with cap marked "TW Flak 6565"
- Control Point
- Tree (Deciduous)



Parking Calculations

945 @ 25/1,000	= 24
1,573 @ 5/1,000	= 8
Total Required	= 32
Total Provided	= 34

Fisk Land Surveying & Consulting Engineers, Inc.
 1022 John Street - P.O. Box 2154
 Rapid City, South Dakota 57709
 (605) 342-7474
 fax@fiskengineers.com



The information herein is a computer generated, text specific to the data client and purpose of project. No warranty or guarantee is expressed or implied to any party, for any other purpose, in any form, except as stated.

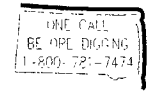
Topographic Map and Boundary Survey
 Knights of Columbus
 Lot A of Hamilton Subdivision
 Section 18, T1N, R8E, B.H.M.
 Rapid City, Pennington County, South Dakota

Surveyed by MBL
 Date 10/7/08
 Drawn by RWF
 Date 10/14/08

Checked by RWF
 Revisions
 6/24/08 - BS
 6/24/08 - Lighting, Inc.
 detail parking codes

Project No
 07-04-04

Site Plan



RECORDED NO. 8

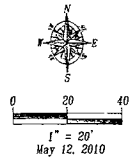
PLANNING ENGINEERS ARCHITECTS

Lot 1D

Existing 100' Area Under
in Block 38 of Plat Page 115

100'

Lot 1B



SURVEYOR'S NOTES

Utilities shown are from visual inspection, sketches provided by individual service providers and Utility Locates performed by South Dakota One Call, Ticket Number 092 760 195. The actual location of utilities and service lines may vary from the information shown hereon. We assume no liability for utilities and services that are not marked or are incorrectly defined by utility locators.

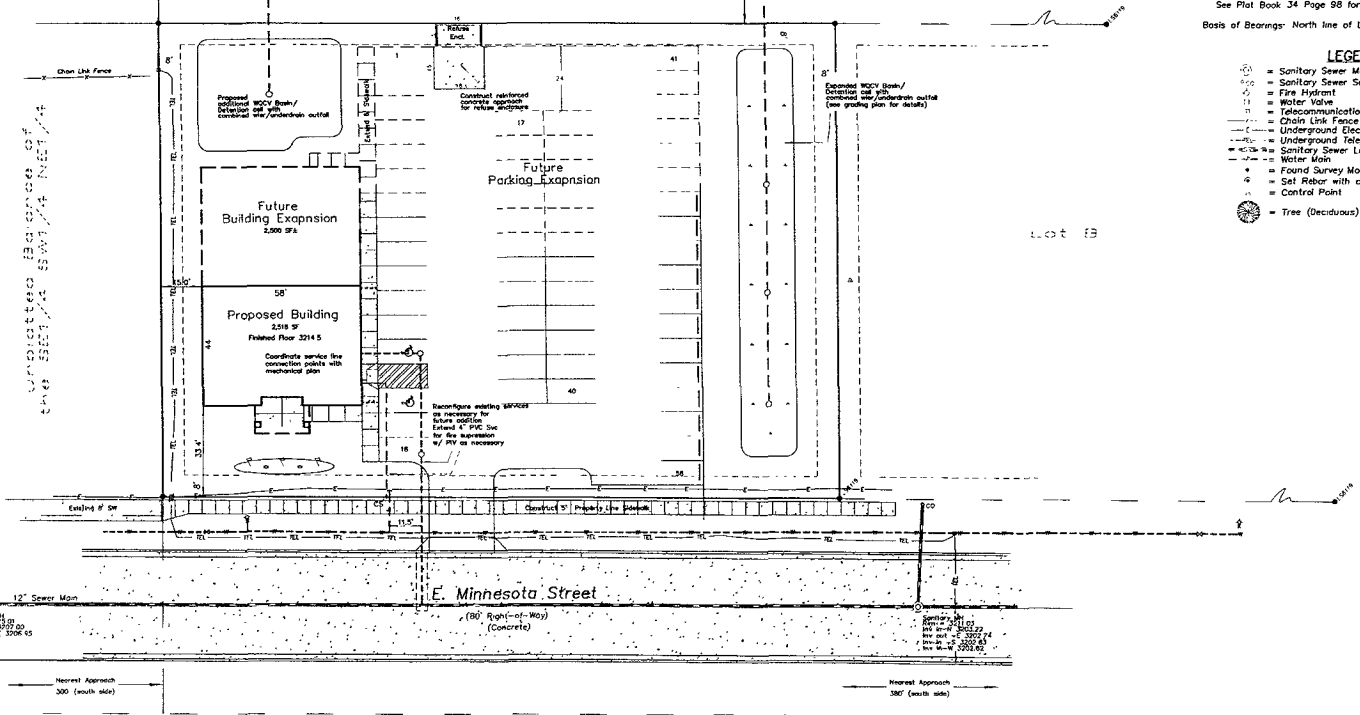
Bench Mark STA 1027 3252 31(NGVD 29)

Bearings and Distances shown are measured this survey
See Plat Book 34 Page 98 for record information

Basis of Bearings: North line of Lots A & B as platted

LEGEND

- = Sanitary Sewer Manhole (Unless noted)
- = Sanitary Sewer Service Line Cleanout
- = Fire Hydrant
- = Water Valve
- = Telecommunications Pedestal
- = Casto Link Fence Line
- = Underground Electric
- = Underground Telephone
- = Sanitary Sewer Line
- = Water Main
- = Found Survey Monument as noted
- = Set Rebar with cap marked "RW Fisk 6565"
- = Control Point
- = Tree (Deciduous)



Surveyed by MLR
Date 10/7/09
Drawn by RWF, JR
Date 10/14/08
Checked by RW

Surveyed by MLR
Date 10/7/09
Drawn by RWF, JR
Date 10/14/08
Checked by RW

Nearest Approach
300' (each side)

Nearest Approach
300' (each side)

Fisk Land Surveying & Consulting Engineers, Inc.
1022 16th Street - P.O. Box 215
Rapid City, SD 57702
(605) 345-1538 (cell) (605) 341-1172 (fax)
fisk@fiskconsult.com



The information herein is copyright material, and specific to the date, client and purpose as stated. No warranty or guarantee is expressed or implied to any party for any other purpose of any kind, except as stated.

Topographic Map and Boundary Survey
Knights of Columbus
Lot A of Hamilton Subdivision
Section 18, T1N, R8E, B.H.M.
Rapid City, Pennington County, South Dakota

Surveyed by MLR
Date 10/7/09
Drawn by RWF, JR
Date 10/14/08
Checked by RW

Revisions

Project No
07-04-04

Future
Site Plan

CALL
BEFORE DIGGING
1-800-781-7474