

Figure 3-2: Residential Growth (2000 to 2008)

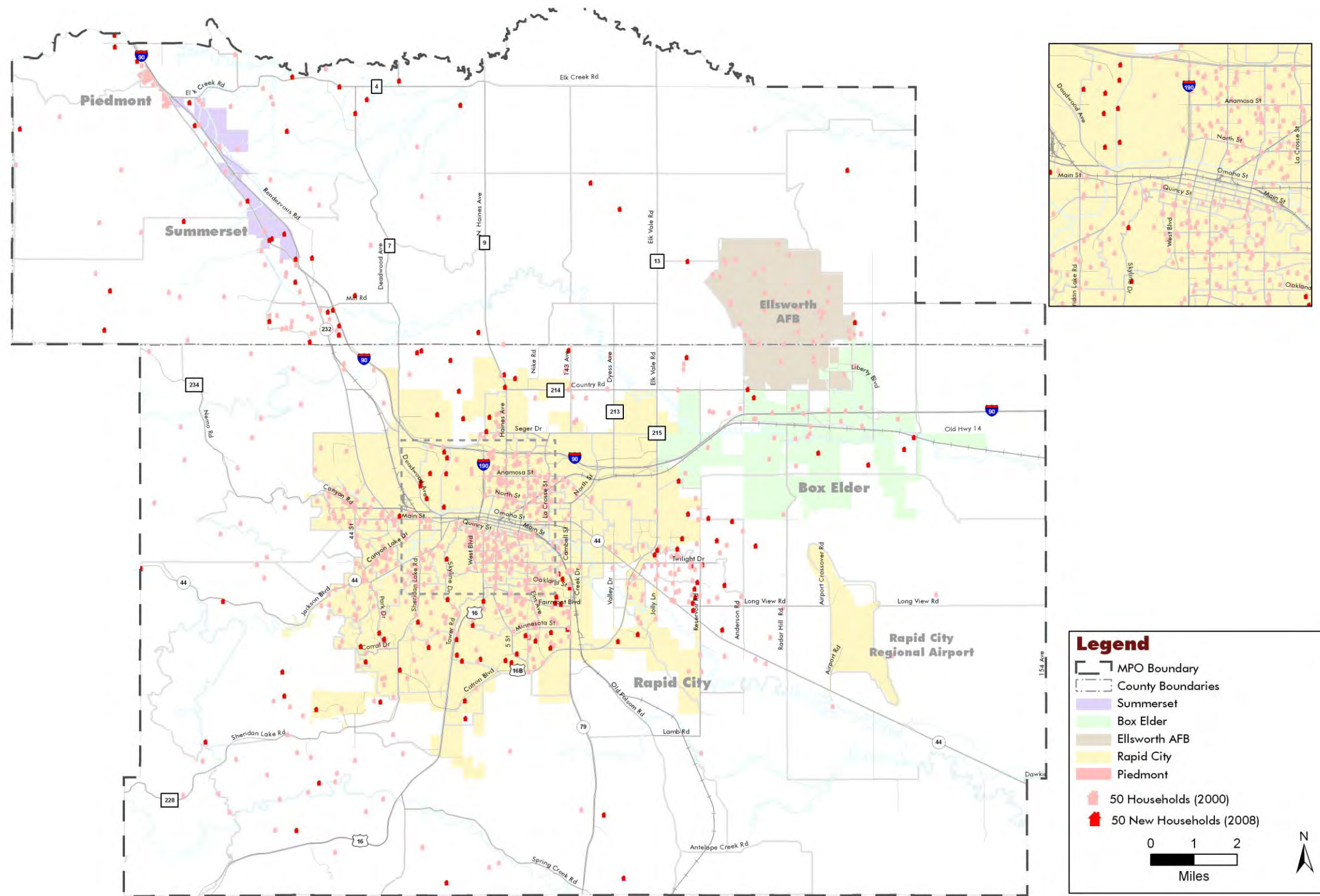


Figure 3-3: Residential Growth (2008 to 2035)

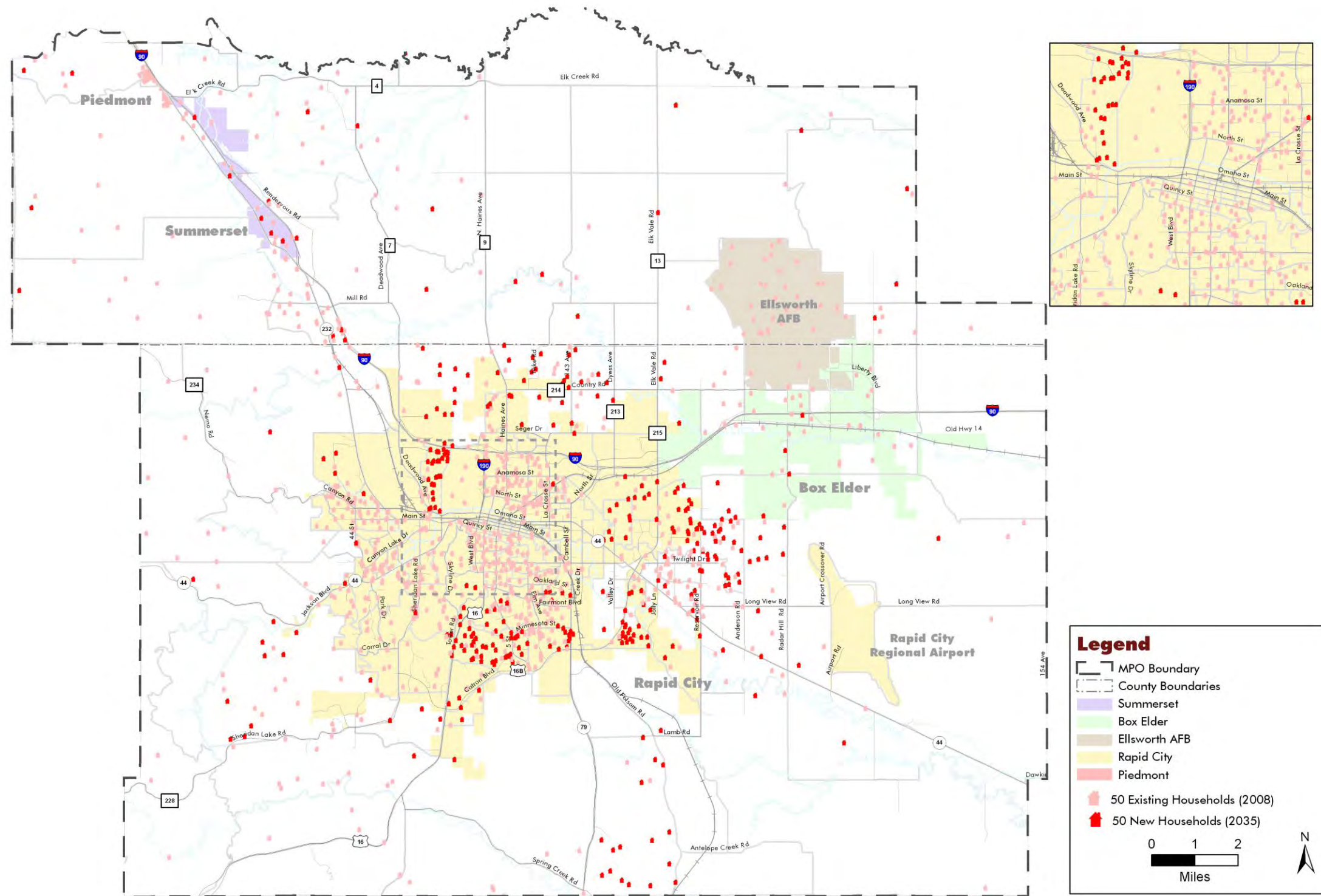


Figure 3-5: Retail Employment Growth

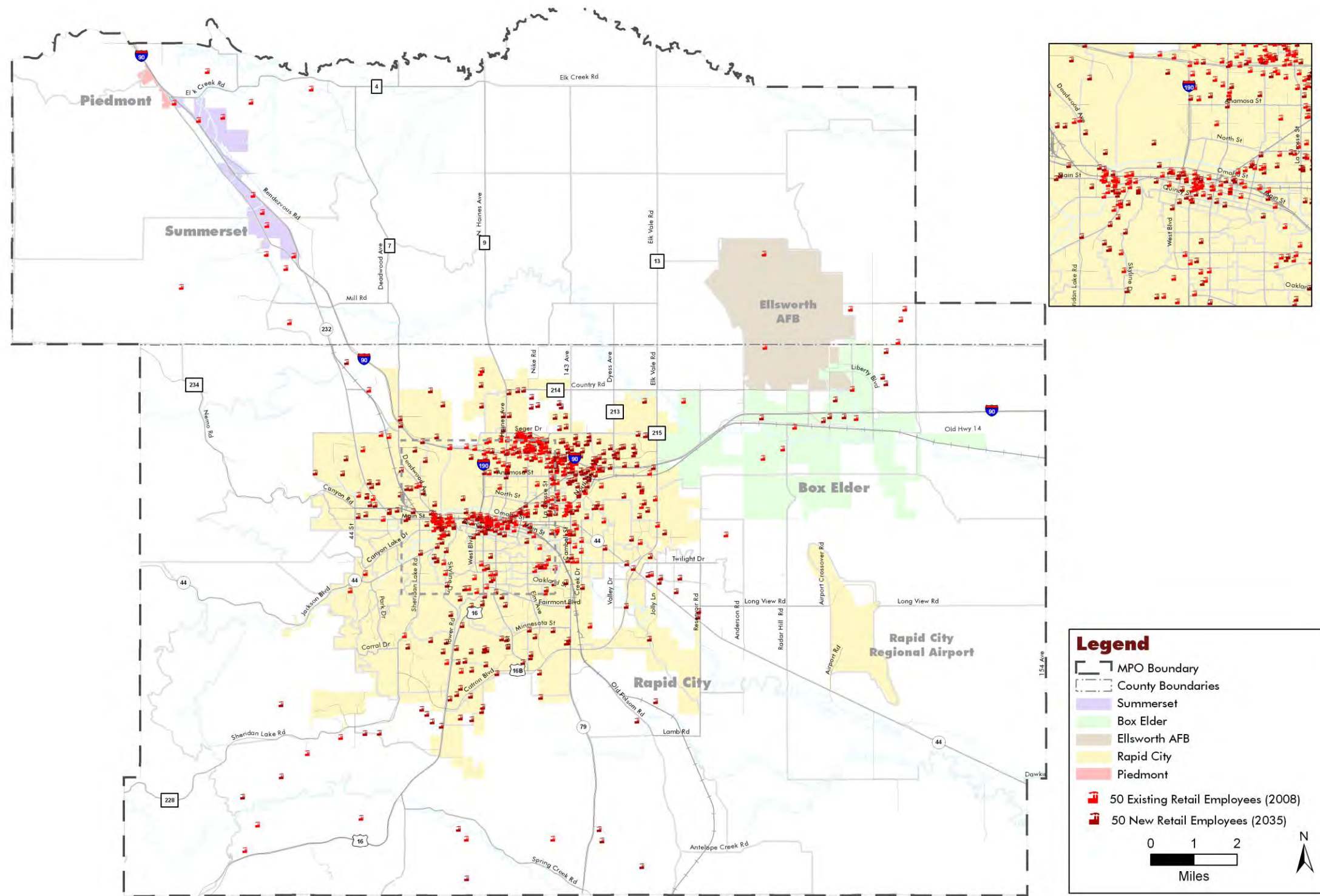


Figure 3-6: Office/Service Employment Growth

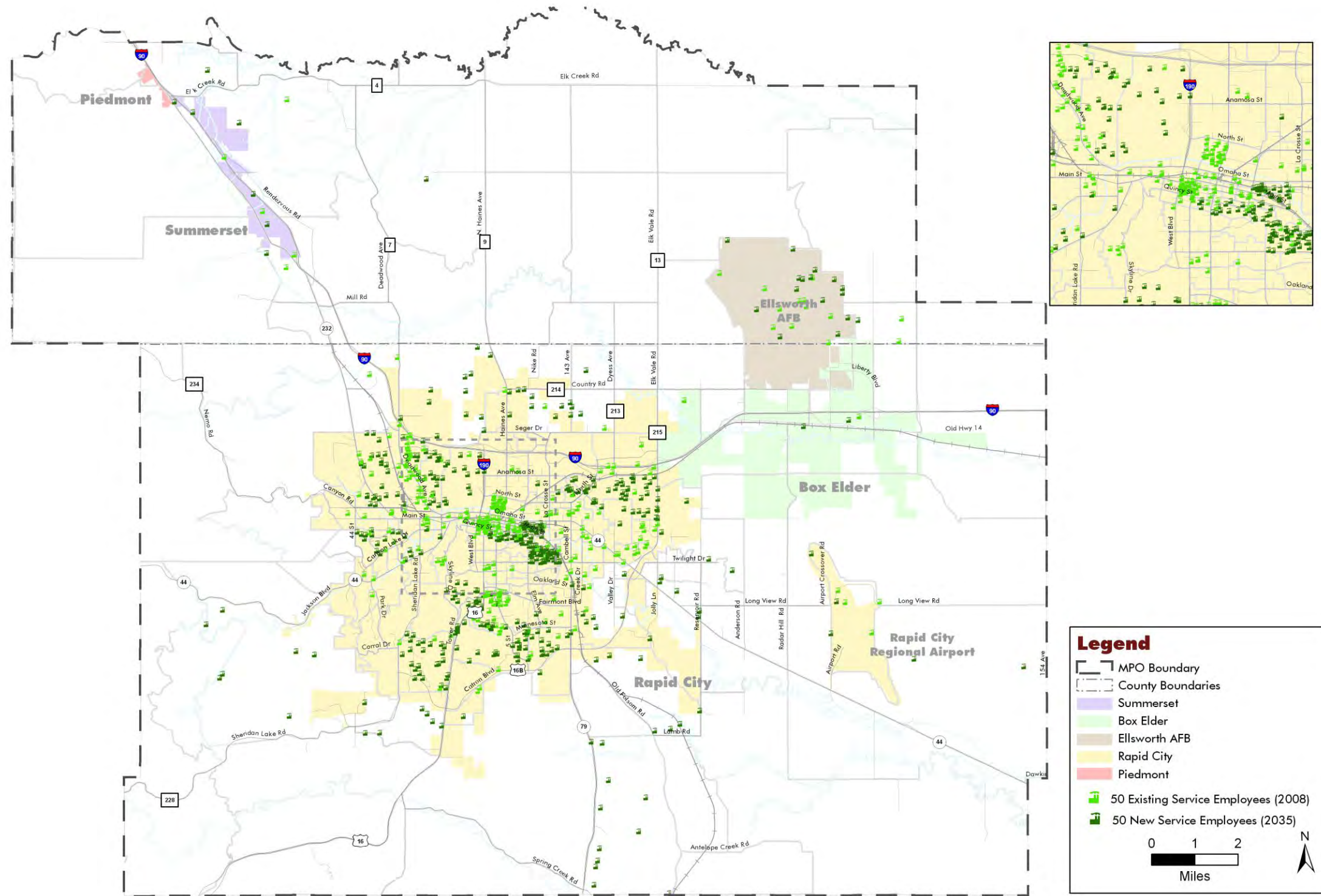


Figure 3-7: Industrial Employment Growth

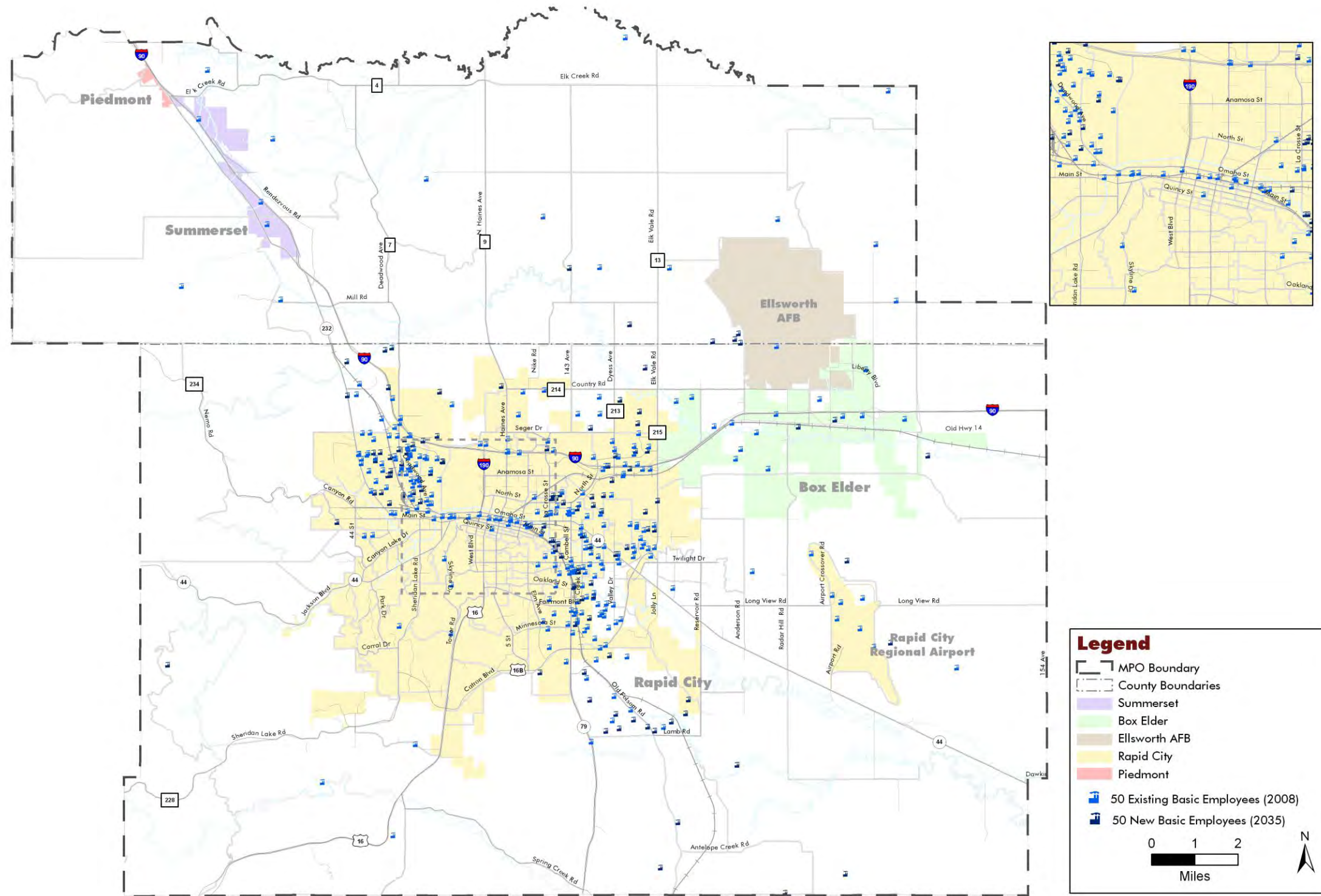


Figure 3-8: Public Sector Employment Growth

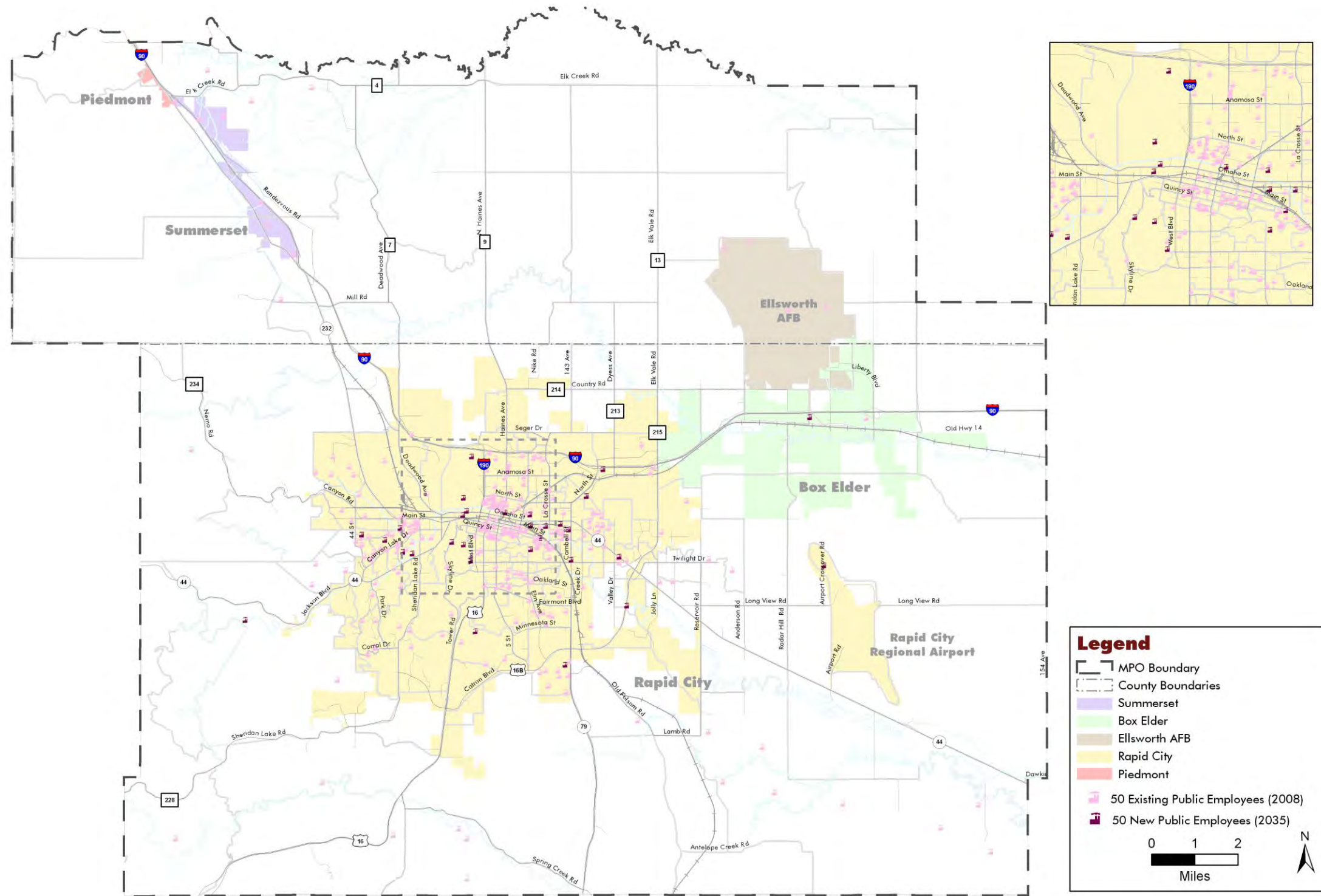


Figure 5-2: Bicycle Network Alternatives

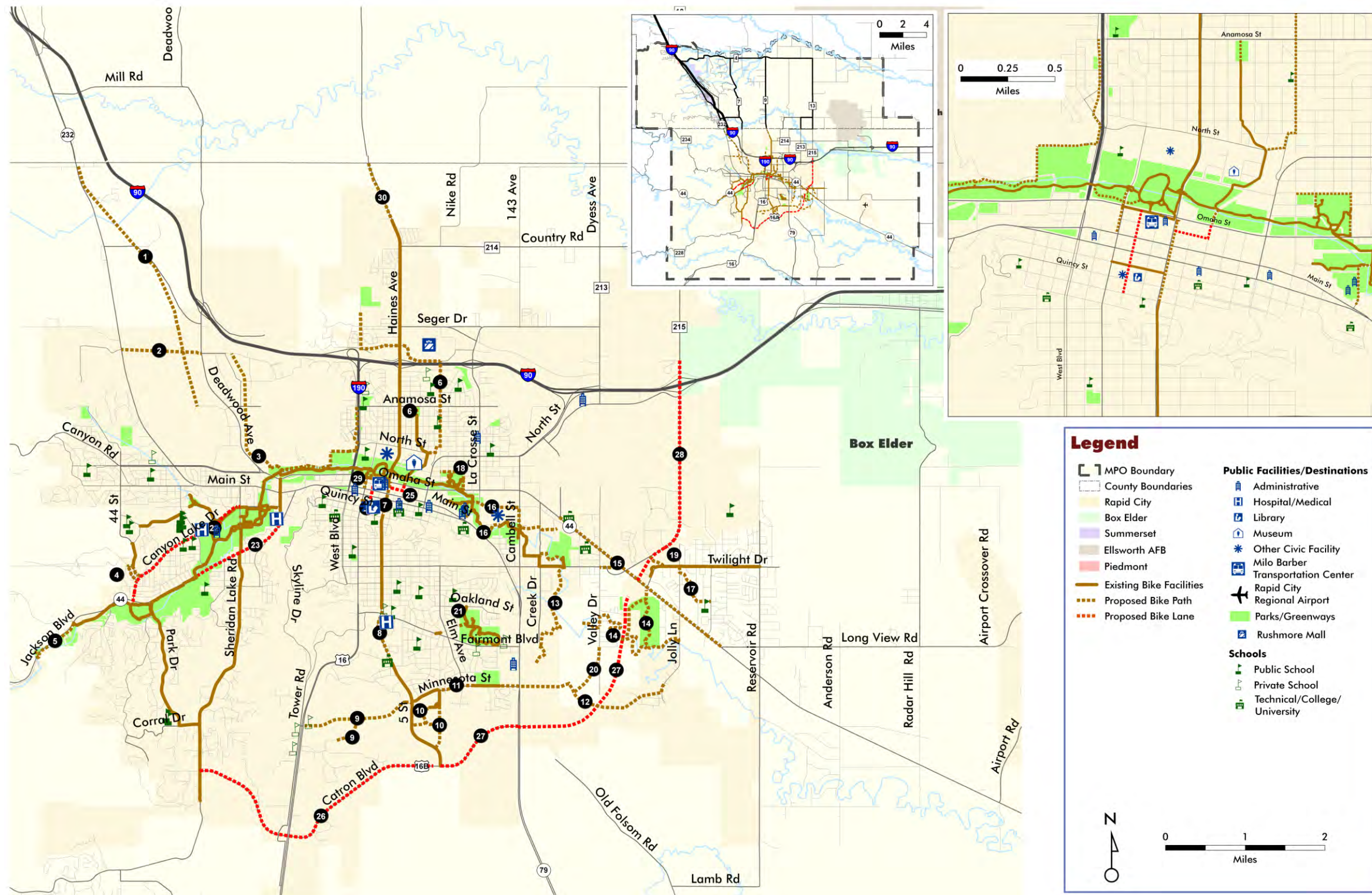


Figure 5-3: Financially-Constrained Non-Motorized Plan

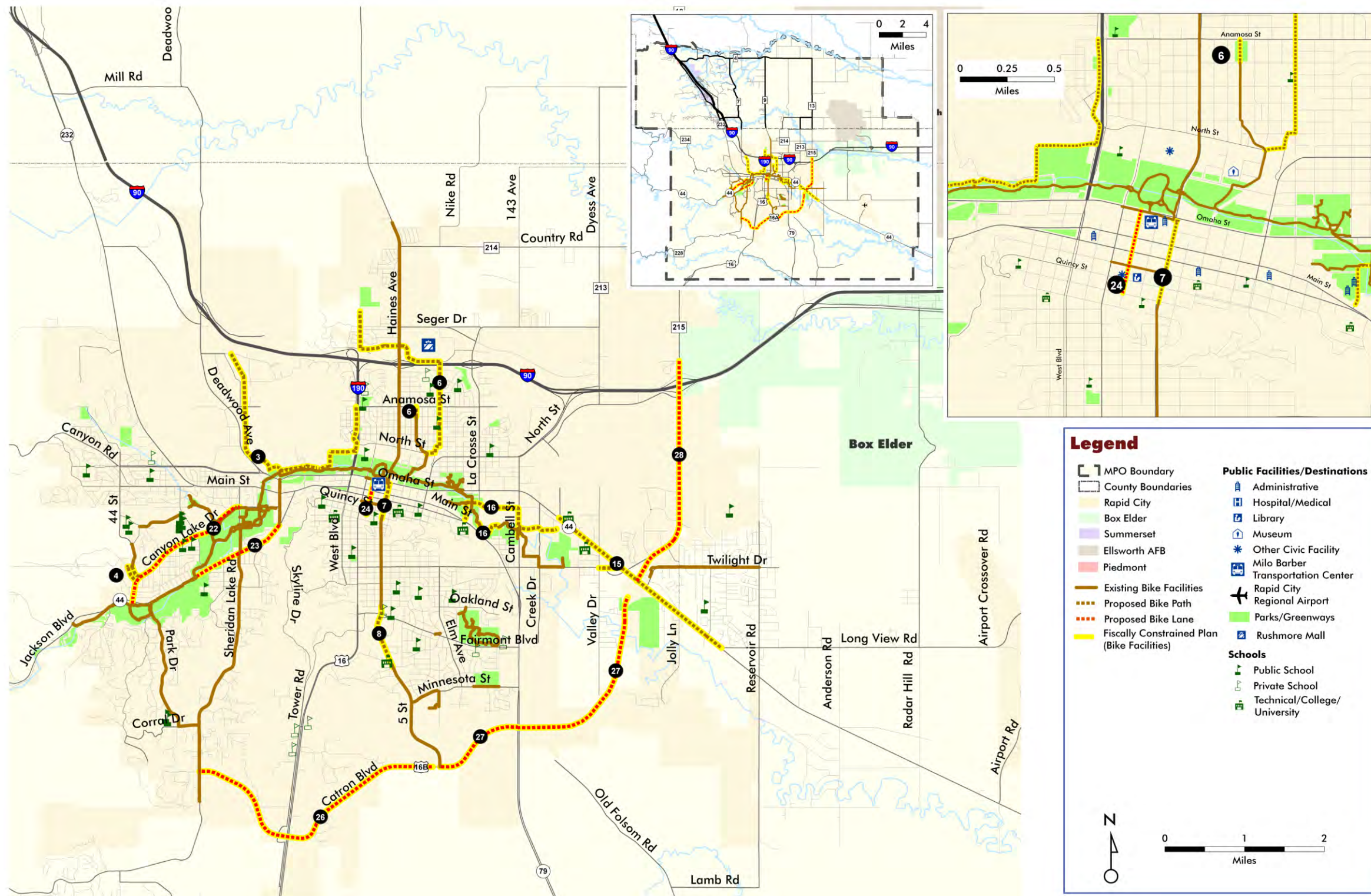


Figure 7-1: Existing Roadway System (2008) with Recently Completed Projects

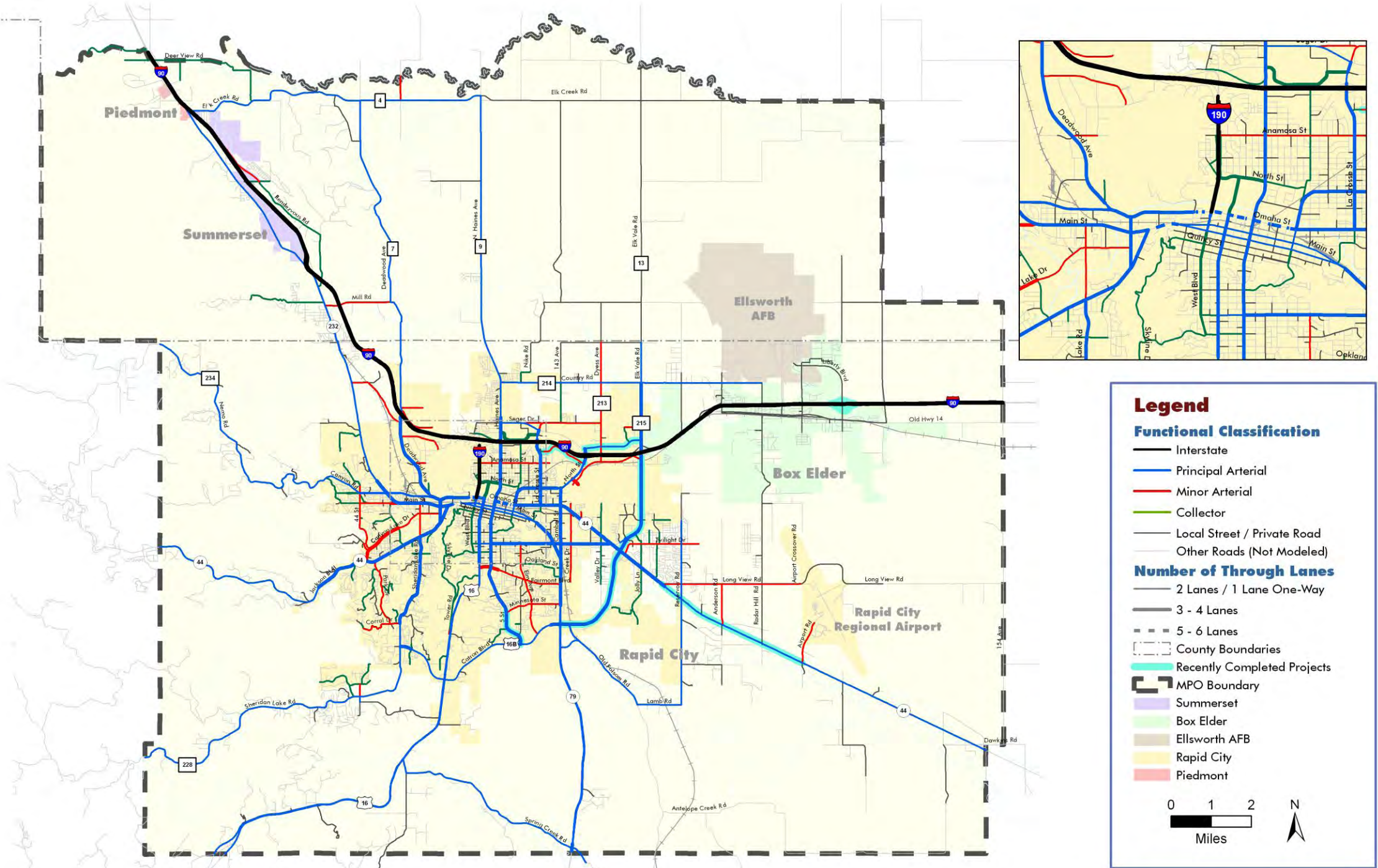


Figure 7-3: Existing and Committed Roadway Network

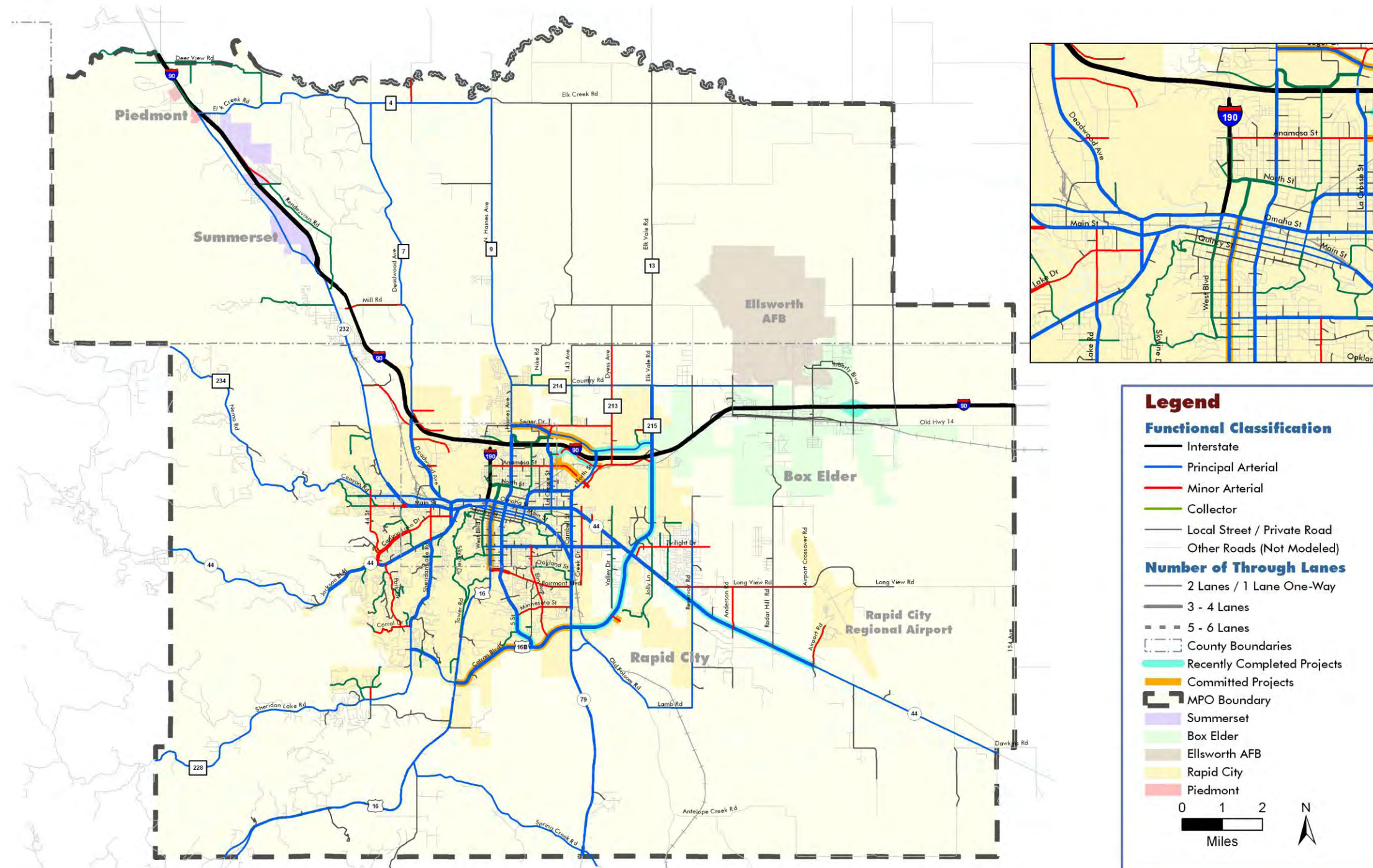
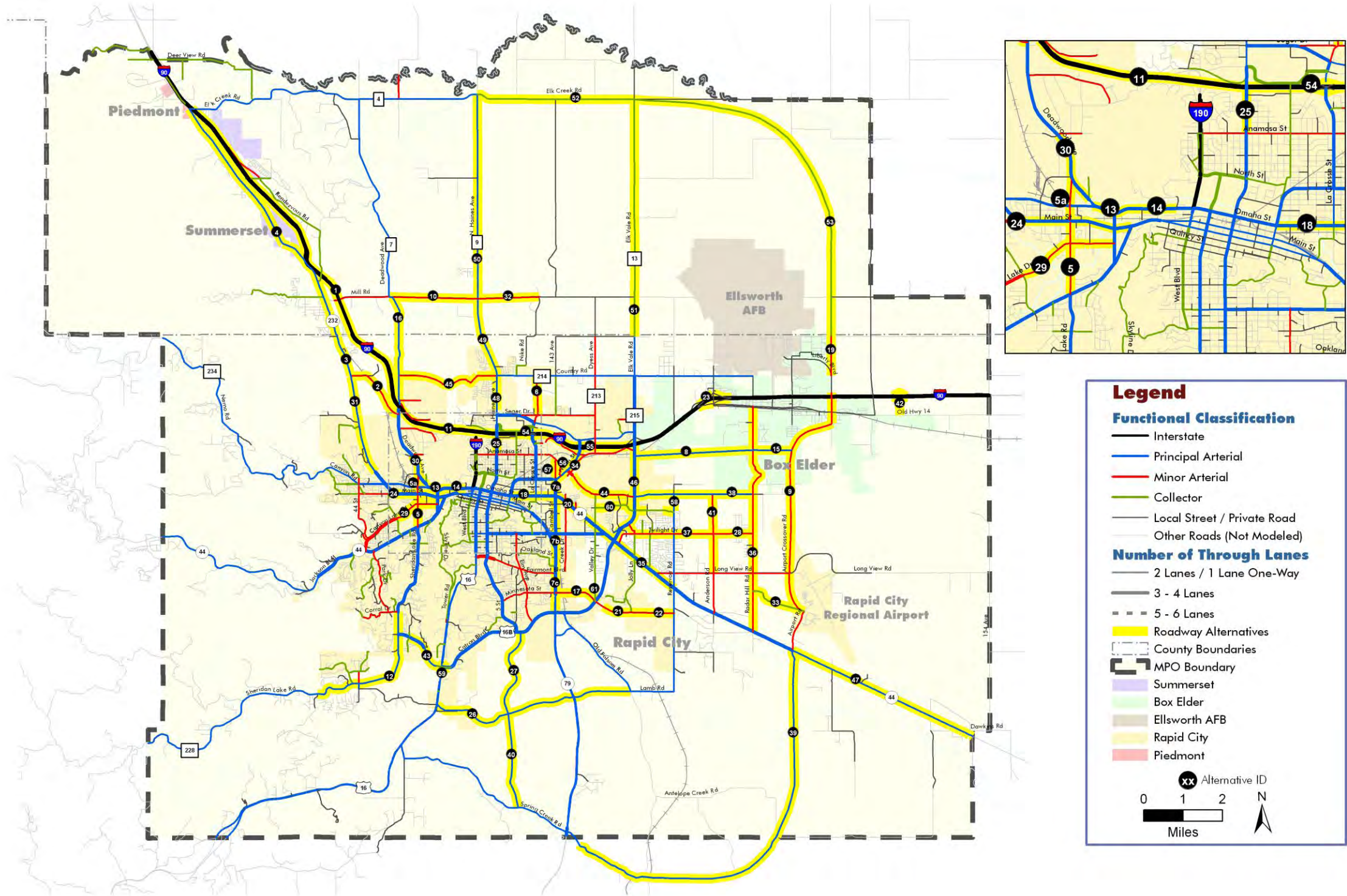


Figure 7-5: Roadway Alternatives



Legend

Functional Classification

- Interstate
- Principal Arterial
- Minor Arterial
- Collector
- Local Street / Private Road
- Other Roads (Not Modeled)

Number of Through Lanes

- 2 Lanes / 1 Lane One-Way
- 3 - 4 Lanes
- 5 - 6 Lanes

Other Symbols

- Roadway Alternatives
- County Boundaries
- MPO Boundary
- Somerset
- Box Elder
- Ellsworth AFB
- Rapid City
- Piedmont

Alternative ID: xx

0 1 2 Miles

N

Figure 7-6: Recommended Financially Constrained Roadway Plan

