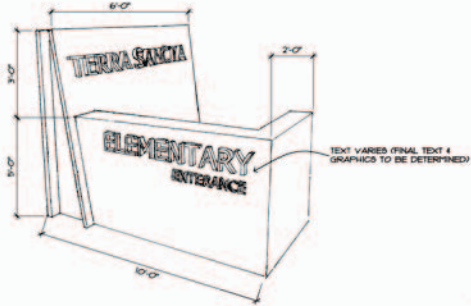
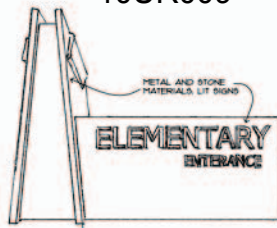
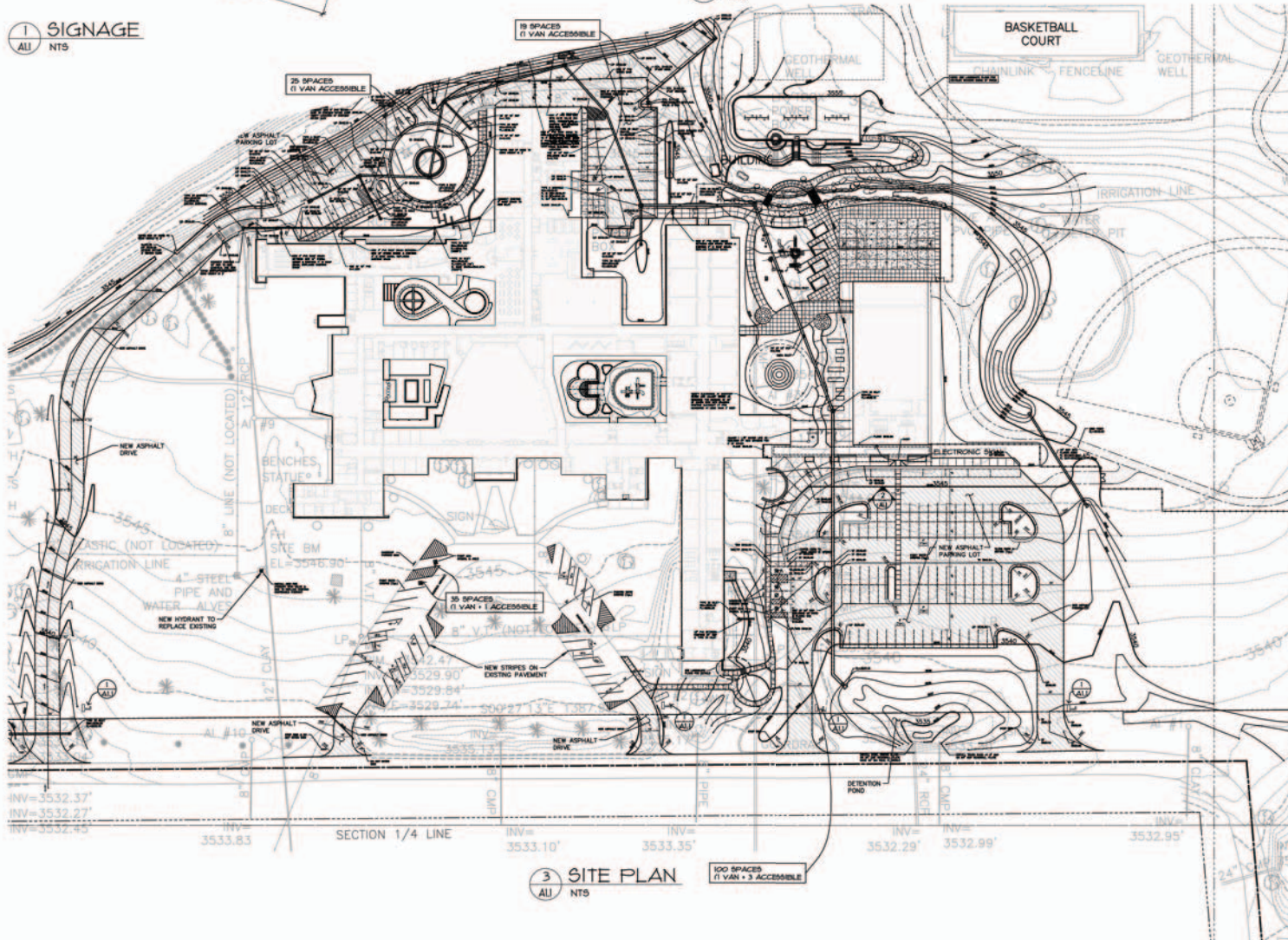


10UR009



2 ELECTRONIC SIGN
ALL NTS

1 SIGNAGE
ALL NTS



3 SITE PLAN
ALL NTS

100 SPACES
(1 VAN + 3 ACCESSIBLE)

ARCHITECT

ARCHITECTURE
INTERNATIONAL
308 PERRILLAS ROAD
RAPID CITY, SOUTH DAKOTA 57702 TEL: 605-343-2984 FAX: 605-343-3692
WWW.ARCINTL.COM

SENDING ARCHITECTURE TO YOUR WORLD

STRUCTURAL ENGINEER:
Albertson Engineering Inc.
3202 West Main
Suite C
Rapid City, South Dakota 57702
605-343-9606

MECHANICAL/ELECTRICAL ENGINEER:
WPE WEST PRAIRIE ENGINEERING INC.
1782 ROAD HEAD • RAPID CITY, SD 57702
PHONE: 605-348-1461 • FAX: 605-348-1464
WWW.WESTPRAIRIEENGINEERING.COM

CONTACT:
LANDSCAPE ARCHITECT:
Wyss Associates, Inc.
728 84th Street
Rapid City, South Dakota 57701
PHONE: 605-348-2268 FC: 605-348-8506
WWW.WYSSASSOCIATES.COM

CIVIL ENGINEER:
FMG, Inc.
Consulting Civil Engineers
3700 Sturgis Road
Rapid City, SD 57702-0317
605-348-4158 FAX: 605-348-4222
WWW.FMGENGINEERING.COM

REVISIONS:
DATE: APRIL 20, 2010
PROJECT MANAGER: KELI TREBIL
PROJECT NUMBER: 2007-026

PRELIMINARY
NOT FOR
CONSTRUCTION

SUPPLEMENT TO
CONDITIONAL USE
PERMIT SUBMITTAL
AT TERRA SANCTA
RAPID CITY, SOUTH DAKOTA

SITE PLAN

A1.1