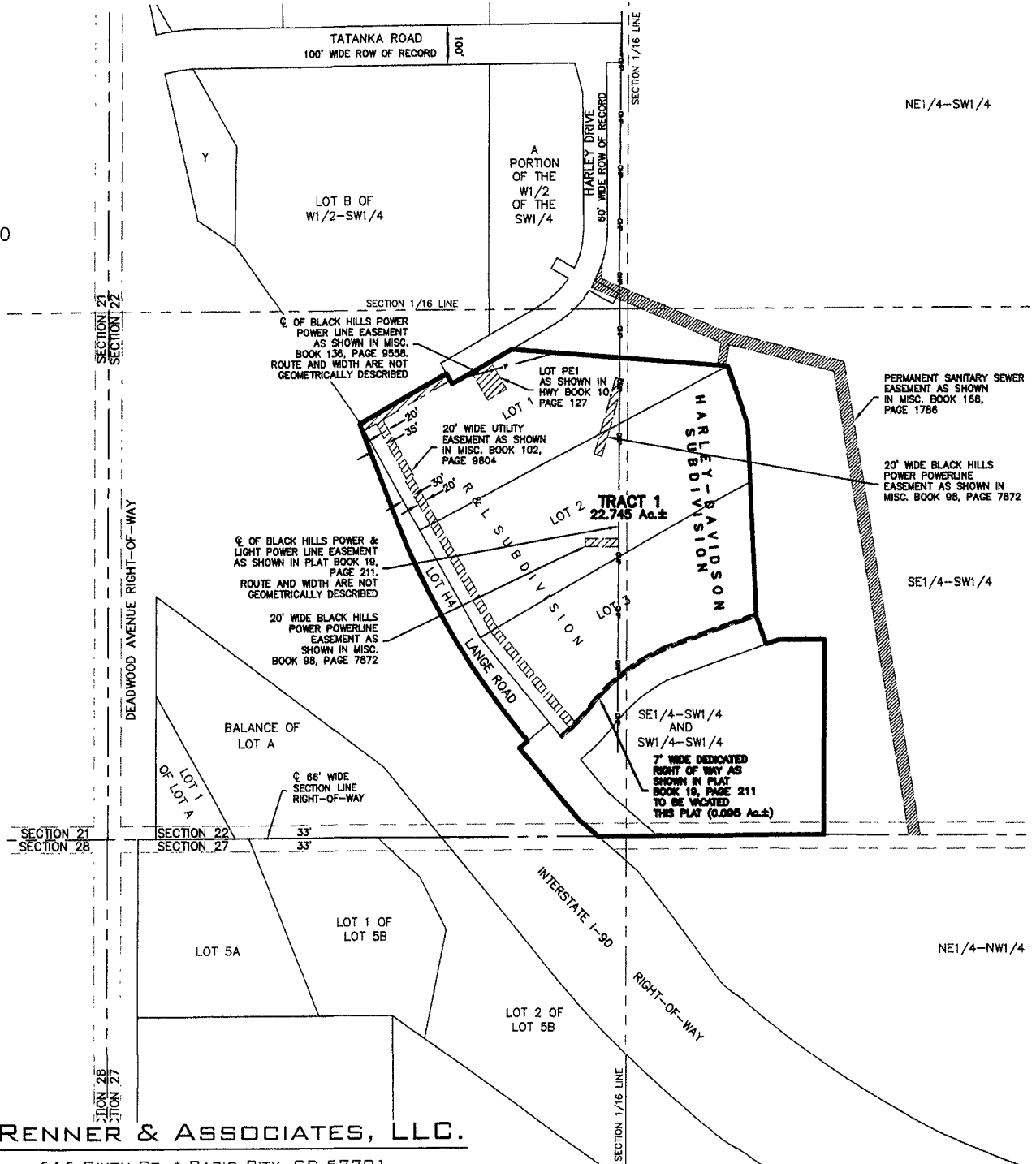


PLAT OF
TRACT 1 OF
HARLEY-DAVIDSON SUBDIVISION
 (formerly Lots 1-3 of R&L Subdivision, Lot H4 and
 a Portion of the SW1/4 of Section 22)
 LOCATED IN THE S1/2 OF THE SW1/4,
 SECTION 22, T2N, R7E, BHM
 RAPID CITY, PENNINGTON COUNTY, SOUTH DAKOTA



MAY 26, 2010
 SCALE: NTS



RENNER & ASSOCIATES, LLC.

616 SIXTH ST. * RAPID CITY, SD 57701
 PHONE: 605/721-7310 FAX: 605/721-7313
 SPEARFISH OFFICE: 605/717-0016