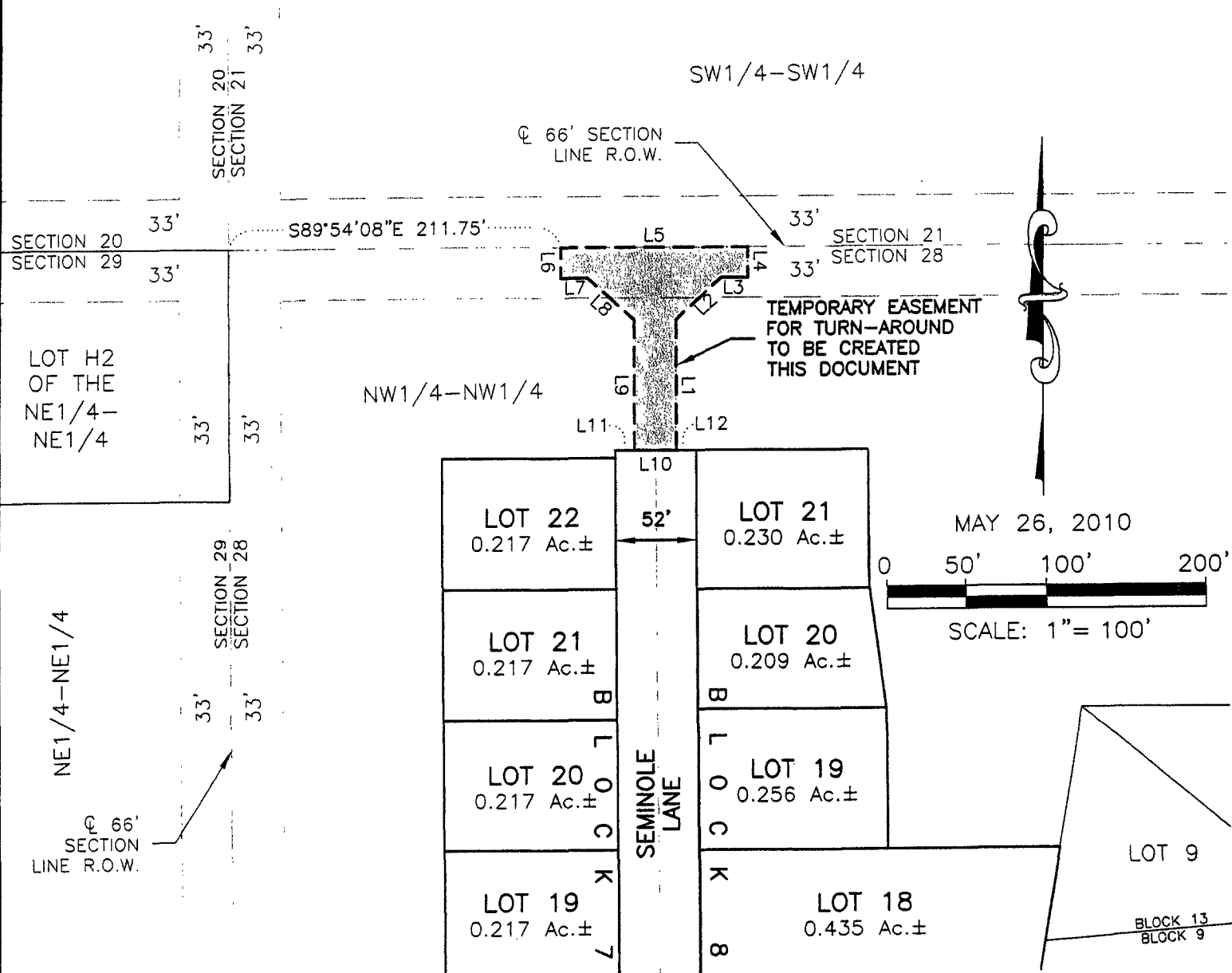


TEMPORARY EASEMENT FOR TURN-AROUND, NW1/4 OF THE NW1/4 OF SECTION 28

T1N, R7E, BHM
RAPID CITY, PENNINGTON COUNTY, SOUTH DAKOTA



| LINE | LENGTH | BEARING |
|------|---------|-------------|
| L1 | 86.00' | S00°19'45"E |
| L2 | 39.99' | S47°12'31"W |
| L3 | 17.00' | N89°54'08"W |
| L4 | 20.00' | S00°19'45"E |
| L5 | 120.00' | S89°54'08"E |
| L6 | 20.00' | N00°19'45"W |

| LINE | LENGTH | BEARING |
|------|--------|-------------|
| L7 | 17.00' | N89°54'08"W |
| L8 | 40.29' | N47°23'34"W |
| L9 | 86.00' | N00°19'45"W |
| L10 | 27.00' | N89°55'41"W |
| L11 | 12.50' | N89°55'41"W |
| L12 | 12.50' | N89°55'41"W |

RENNER & ASSOCIATES, LLC.

616 SIXTH ST. * RAPID CITY, SD 57701
PHONE: 605/721-7310 * FAX: 605/721-7313
EMAIL: GARY@RENNERASSOC.COM



CITY HALL 1903

